

ARCHOS™ DIGITAL MINI-CAM FOR AV 500



AV 500 not included

ARCHOS™

on the go

English Language User Manual

User Manual for ARCHOS™ DIGITAL MINI-CAM for AV 500 series

Version 1.2

Please visit our website to download the most recent manual and software for this product

Contents

1	ARCHOS™ DIGITAL MINI-CAM and Camera controller	3
2	Recording with your ARCHOS™ DIGITAL MINI-CAM	4
2.1	Connecting your ARCHOS™ DIGITAL MINI-CAM to your AV 500	4
2.2	Making a recording using the camera controller	4
2.3	Making a recording using the VideoCorder application of your AV 500	5
2.4	Checking the status of the ARCHOS™ DIGITAL MINI-CAM	5
2.5	Where is the recording saved?	6
2.6	Notes on the ARCHOS™ DIGITAL MINI-CAM	6
3	Precautions	7
4	Technical Support	8
5	Technical specifications	11
6	Legal	12

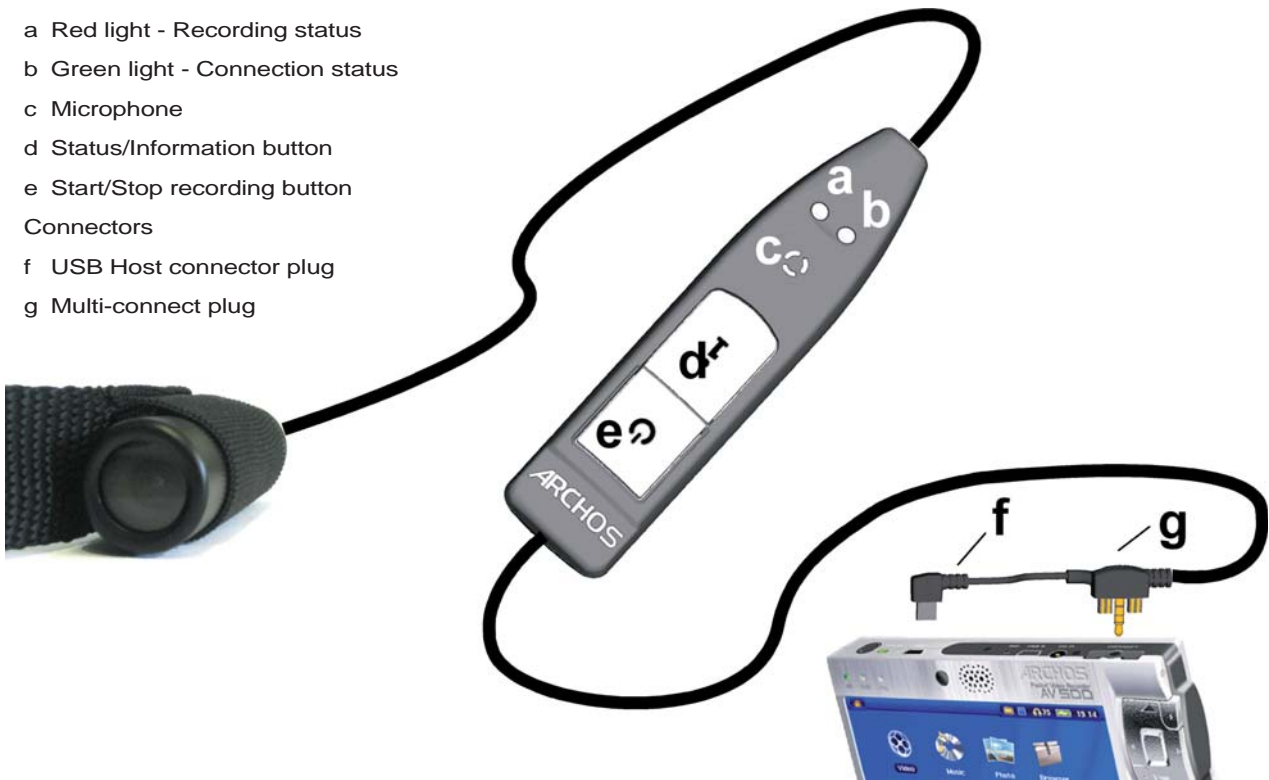
1 ARCHOS™ DIGITAL MINI-CAM and Camera controller

Camera controller

- a Red light - Recording status
- b Green light - Connection status
- c Microphone
- d Status/Information button
- e Start/Stop recording button

Connectors

- f USB Host connector plug
- g Multi-connect plug



3

4

2 Recording with your ARCHOS™ DIGITAL MINI-CAM

English

2.1 Connecting your ARCHOS™ DIGITAL MINI-CAM to your AV 500

You can connect your camera to your AV 500 before switching on the device or once it is running.

Plug the USB connector plug into the USB host port of your AV 500 and the multi-connect plug into its multi-connect jack. Your ARCHOS™ DIGITAL MINI-CAM will be powered through your AV 500, so be sure to charge it fully when intending to make longer recordings.

You can clip the controller of your ARCHOS™ DIGITAL MINI-CAM for example onto your shirt pocket. The camera itself is typically fitted into the headband and worn so that you record what you see.

The next two sections explain the two options for making a recording:

1. Making the recording using the camera controller.
2. Making a recording using the VideoCorder application of your AV 500.

Using the Camcorder application lets you set a number of parameters.

2.2 Making a recording using the camera controller

Once your camera is correctly connected, making a recording using the camera controller is straight forward. Press firmly on the Start/Stop button on your camera controller. The red light will go on briefly, and on the screen of your AV 500, you will see a message indicating that a video signal is detected. The image transmitted from the camera will then be displayed and the recording will start.

To stop recording, press the Start/Stop button on the camera controller again. This time, the green light will go on briefly. This indicates that the recording has stopped. The AV 500 will now save your video file and take you to the folder where the video is saved (see the section **Where is the recording saved?** for information on the default location).

Refer to the section **Checking the state of the ARCHOS™ DIGITAL MINI-CAM** for information on how to check whether your camera is making a recording.

Pressing the Start/Stop button on the controller will also start and stop a recording while the buttons of your AV 500 are locked. You can thus conveniently make a recording while carrying your AV 500 in a backpack for example.

2.3 Making a recording using the VideoCorder application of your AV 500

On the Main menu, select the **VideoCorder** icon and press **Play/Enter/On** \circ to open the **VideoCorder** application. Your AV 500 now powers the camera. On the screen, you see the image the camera is currently seeing. This preview screen thus permits you to adjust for example the position or direction of the camera before you start your recording.

A number of settings, for example resolution and bitrate, can be adjusted. Normally you need not change these settings. The action icon **Settings** lets you access these recording parameters and you can return to the pre-recording screen by pressing the AV 500's **Stop/Escap/Off** \times button.

Time Stamp **ON** or **OFF**. If set to **ON**, the image will contain information on the date and time of recording.

For information on the other settings, please refer to the section on making a video recording in the complete Adobe® PDF user manual of the AV 500. Please note that the parameter **Format** does not exist as the setting is pre-determined by the camera. For the same reason, the parameter **Source** can only be set to **Composite** or **Black & White**.

To start the recording, press the AV 500's **Play/Enter/On** \circ button again. You can also select the action icon **Start recording**. On the screen of your AV 500, you can see the images recorded by the camera. In order to stop and save your recording, press **Stop/Escap/Off** \times . Using the **Play** button, you can also pause your recording.

Alternatively, you can press the Start/Stop button on your camera controller to start and stop the recording.

2.4 Checking the status of the ARCHOS™ DIGITAL MINI-CAM

In order to find out whether the ARCHOS™ DIGITAL MINI-CAM is idle or recording, press the Status Button. The lights will indicate the status of the AV 500 as shown below:

5

Red and green	The ARCHOS™ AV 500 is presently making a recording.
Green	The ARCHOS™ DIGITAL MINI-CAM is connected correctly to the AV 500 and a recording can be started.
No light	The ARCHOS™ DIGITAL MINI-CAM is not connected properly to the AV 500 or the AV 500 is switched off.

2.5 Where is the recording saved?

The default location for video recordings is the folder called **Video**. If you click on the **Video** icon in the main menu, you will go to this folder. Notice that one of the action icons on the **Video Browser** screen is labeled **VideoCorder**. Each time you use this action icon to record a video instead of going through the **VideoCorder** icon on the main menu, you set the recording default location to the current folder. For example, let's say you have a folder called **/Video/Holiday**. If you go to this folder and then make a recording using the action icon **VideoCorder**, you will set the default record location to this folder. Now, each time you use the **VideoCorder** icon or Start/Stop button on the camera controller to start a recording, your recording will be saved in the folder **/Video/Holiday**.

When pressing the **ESC/STOP** button from the pre-recording screen/VideoCorder application, you will be taken to the current default recording folder so you can directly view your recording.

2.6 Notes on the ARCHOS™ DIGITAL MINI-CAM

- Do not be concerned if the controller's lights are not lit while your ARCHOS™ DIGITAL MINI-CAM is in use. This is normal.
- The loudspeaker of your AV 500 will be disabled during the recording as this could result in audio feedback (unpleasant noises). The microphone integrated into the camera controller will record the sound. Therefore make sure that it is not covered in order to obtain the best possible sound for your recording.
- If images look distorted, you might be too close to the object you are filming. This effect is also referred to as "fish eye effect". The range for obtaining undistorted images is between 1.5 and 10 meters. Beyond 10 meters, details cannot be recorded. If you are experiencing problems with the image quality, you might also want to try increasing the resolution or sampling rate.
- While the camera is connected to your AV 500, the VideoCorder icon in the main menu will be replaced by the CamCorder icon and the Scheduler icon disappears.

3 Precautions

Please note the following points in order to avoid damage to your ARCHOS™ DIGITAL MINI-CAM:

- Do not attempt to take the camera apart. There are no customer-serviceable parts inside, and you could receive an electric shock.
- Handle the camera with care. A violent shock, for example through a fall, could damage it.
- Use the camera in moderate conditions. Avoid cold or hot temperatures, humidity over 85%, and dust or sand.
- The same precautions apply to the controller.
- Please be aware that the camera and controller are not water-proof and should be kept away from water.
- To clean the camera only use products specifically designed to clean optical lenses (such as eye glasses).
- **NEVER** direct the camera at the sun!

4 Technical Support

In case you should encounter any technical difficulties using your product, we suggest you go through these steps in order to resolve any issues as efficiently as possible:

- 1) Please read carefully through the appropriate sections of this manual and the full Adobe® PDF user manual of the AV 500 on its hard drive. Some subject areas may be treated in two different chapters depending on how the device is being used.
- 2) Look at our Support section on the ARCHOS™ website (www.archos.com). Here, you will find Frequently Asked Questions (FAQ) for our different products, and there is a chance that somebody else has already asked your question.
- 3) If these steps do not help you to resolve your technical difficulty, you can always contact us either via e-mail or by calling the helpline. Telephone support will be provided in the language of the countries listed below. For other countries, please use e-mail technical support.

DO NOT USE phone or e-mail support for marketing and sales questions. These numbers are to aid those who have technical difficulties / malfunctions.

- For warranty and services purposes, keep your sales receipt for proof of purchase.
- If technical support (Telephone or E-mail) determines that your product needs to be returned, please contact the place of purchase to have your product repaired or replaced (depending on problem type). Customers who purchased directly from the ARCHOS™ website should fill out the RMA return request form on the website.

Telephone Support

Assistance téléphonique - Telefonische Kundenunterstützung - Asistencia telefónica - Assistenza telefonica - Telefonische ondersteuning

Canada	877-300-8879 (toll free)	Nederland	020-50 40 510
Danmark	35 25 65 67	Norge	22 57 77 71
Deutschland	069-6698-4714	Schweitz/Suisse	442 004 111
España	09-1745-6224	Suomi	09 2311 3434
France	01 70 20 00 30	Svenska	08 579 290 80
Ireland	01-601-5700	UK	0207-949-0115
Italia	02-4827-1143	USA	877-300-8879 (toll free)

E-mail Support

Assistance par e-mail - Adresse des ARCHOS-Kundendienstes - Asistencia por e-mail - Assistenza tramite posta elettronica - E-mailondersteuning

www.archos.com/support

WWW.ARCHOS.COM

9

10

WWW.ARCHOS.COM

English

Worldwide Offices

United States & Canada	Europe & Asia
ARCHOS™ Technology 3, Goodyear - Unit A Irvine, CA 92618 USA Phone: 1 949-609-1483 Fax: 1 949-609-1414	ARCHOS™ S.A. 12, rue Ampère 91430 Igny France Phone: +33 (0) 169 33 169 0 Fax: +33 (0) 169 33 169 9
United Kingdom	Germany
ARCHOS™ (UK) Limited PO Box 1420 Southampton SO15 1WF United Kingdom Phone: +44 (0) 1264 366022 Fax: +44 (0) 1264 366626	ARCHOS™ Deutschland GmbH Business Park Vierwinden Konrad-Zuse-Str. 22 41516 Grevenbroich Germany Tel: +49 21 82 – 570 41-0 Fax: +49 (0) 2182/57041-70

10

5 Technical specifications

DIGITAL MINI-CAM for AV 500

Resolution	420 TV Lines
CCD	1/4-inch SONY Super HAD color CCD
Lens	Fixed Pinhole 3.6mm
Field Of View	72.5 degrees
Depth of Field	1.5 to 10 meters
White balance	Automatic
Light Sensitivity	1.0 Lux / F 1.2
Power Supply	Power by AV 500
Recording resolution	
With AV 500	512 x 384 (Optimal) or 640 x 480 (VGA)
Recording Autonomy*	With AV 500 30GB model: up to 4 hours With AV 500 100GB model: up to 4 Hours With AV 500 100GB with Super Pack battery model: up to 12 Hours
Weight	82 g – 28,9 oz
Dimensions	20.5 mm (Ø) x 72 mm (L)
CCD resolution	Model NTSC: 512 x 492 Model PAL: 582 x 500
Operating temperature	approx. 5°C to 35°C/approx. 41°F to 95°F

*Depending on usage (stop/start/writing)

All brands and product names are registered trademarks and the property of their respective owners. Specifications are subject to change without notice. Errors or omissions excepted. Images and illustrations may not always match contents. Copyright© 2005. ARCHOS. All rights reserved.

11

6 Legal

English

Warranty and Limited Liability

This product is sold with a limited warranty and specific remedies are available to the original purchaser in the event the product fails to conform to the limited warranty. Manufacturer's liability may be further limited in accordance with its sales contract.

In general, the manufacturer shall not be responsible for product damages caused by natural disasters, fire, static discharge, misuse, abuse, neglect, improper handling or installation, unauthorized repair, alteration or accident. In no event shall the manufacturer be liable for loss of data stored on disk media.

MANUFACTURER SHALL NOT BE LIABLE FOR ANY SPECIAL, INCIDENTAL OR CONSEQUENTIAL DAMAGES. EVEN IF INFORMED OF THE POSSIBILITY THEREOF IN ADVANCE.

ARCHOS™ licensor(s) makes no warranties, express or implied, including, without limitation, the implied warranties of merchantability and fitness for a particular purpose, regarding the licensed materials. ARCHOS's licensor(s) does not warrant, guarantee or make any representations regarding the use or the results of the use of the licensed materials in terms of its correctness, accuracy, reliability, correctness or otherwise. The entire risk as to the results and performance of the licensed materials is assumed by you. The exclusion of implied warranties is not permitted by some jurisdictions. The above exclusion may not apply to you.

In no event will ARCHOS's licensor(s), and their directors, officers, employees or agents (collectively ARCHOS' licensor) be liable to you for any consequential, incidental or indirect damages (including damages for loss of business profits, business interruption, loss of business information, and the like) arising out of the use of inability to use the licensed materials even if ARCHOS' licensor has been advised of the possibility of such damages. Because some jurisdiction do not allow the exclusion or limitation of liability for consequential or incidental damages, the above limitations may not apply to you.

Please see your sales contract for a complete statement of warranty rights, remedies and limitation of liability.

Furthermore, warranty does not apply to:

1. Damages or problems resulting from misuse, abuse, accident, alteration or incorrect electrical current or voltage.
2. Any product tampered-with or damaged warranty seal or serial number label.
3. Any product without a warranty or serial number label.
4. Batteries and any consumable items delivered with or in the equipment.

The end user is required to use this product only in conformity with its original purpose and is strictly forbidden to make any technical modifications that could potentially impinge on the rights of third parties. Any modification to the hardware, software, or physical enclosure of the product must be approved in writing by ARCHOS. Non approved modified products are subject to the withdrawal of any or all guarantee clauses.

Warnings and Safety Instructions

CAUTION

To prevent risks of electric shock, this unit must only be opened by qualified service personnel.

WARNING

To prevent fire or shock hazard, do not expose the unit to rain or moisture.

Use of this product is for personal use only. Copying CDs or loading music, video, or picture files for sale or other business purposes is or may be a violation of copyright law. Copyrighted materials, works of art, and/or presentations may require authorization to be fully or partially recorded. Please be aware of all such applicable laws concerning the recording and use of such for your country and jurisdiction.

FCC Compliance Statement

FCC Compliance

This equipment has been tested and found to comply with limits for a Class B digital device, pursuant to Part 15 of the FCC Rules. These limits are designed to provide reasonable protection against harmful interference in a residential installation. This equipment generates, uses and can radiate radio frequency energy and, if not installed and used in accordance with instructions, may cause harmful interference to radio communications.

13

However, there is no guarantee that interference will not occur in a particular installation. If this equipment does cause harmful interference to radio or television reception, which can be determined by turning the equipment off and on, the user is encouraged to try to correct the interference by one or more of the following measures:

- Reorient or relocate the receiving antenna.
- Increase the separation between the equipment and receiver.
- Connect the equipment into an outlet on a circuit different from that to which the receiver is connected.
- Consult the dealer or an experienced radio/TV technician for help.

CAUTION : Modifications not authorized by the manufacturer may void users authority to operate this device.

FCC Part 15 - Operation is subject to the following two conditions:

1. This device may not cause harmful interference.
2. This device must accept any interference received including interference that may cause undesired operation.

Electrostatic Discharge

Normal functioning of the product may be disturbed by ESD. If so, simply reset the product to resume normal operation by following the instruction manual. During file transmission, please handle with care and operate in a static-free environment.

Copyright Notice

Copyright ARCHOS™ © 2005 All rights reserved.

This document may not, in whole or part, be copied, photocopied, reproduced, translated or reduced to any electronic medium or machine-readable form without prior consent, in writing, from ARCHOS. All brands and products names are registered trademarks and the property of their respective owners. Specifications are subject to change without notification. Errors and omissions accepted. Images and illustrations may not always match contents. Copyright © ARCHOS. All rights reserved.

Disclaimer of warranty: to the extent allowed by applicable law, representations and warranties of non-infringement of copyrights or other intellectual property rights resulting from the use of the product under conditions other than as here above specified, are hereby excluded.

Environmental Considerations

Protection of the environment is an important concern to ARCHOS™. In order to put this concern into tangible actions, ARCHOS™ has consciously included a set of methods that favor a respect for the environment into the entire cycle of its products; from fabrication to consumer usage, to final disposal.

Batteries : If your product contains a detachable battery pack, you should only dispose of it in a designated collection point for used batteries.

The Product : The crossed-out garbage can symbol on your product signifies that it falls into the category of electric/electronic equipment. Products of this type contain substances that are potentially dangerous to the environment and to human health. Therefore, you should not dispose of the ARCHOS electronic device in a regular trash. As such, the current European directives ask that this device be collected:

- At places of distribution in the case of a purchase of a similar electronic product.
- At locally created disposal areas (waste disposal centers, sorted trash system, etc.)

By doing this, you are actively participating in the reuse and recycling of disposed electronic and electric equipment that could have potential effects on the environment and human health.

