

Release Notes for MPLAB® Code Configurator's mTouch® Capacitive Sensing Library v2.50

1 What is MPLAB® Code Configurator's mTouch® Capacitive Sensing Library

The mTouch® Capacitive Sensing Library for Microchip's MPLAB® X Code Configurator allows for quick and easy C code generation of Microchip's capacitive sensing technology. The library module uses a Graphical User Interface (GUI) to accomplish three things; setting multiple mTouch parameters, enabling various mTouch features and generating the necessary C code to program onto a PIC microcontroller.

2 System Requirements

- MPLAB® X IDE 4.05 or later
- XC8 compiler v 1.42 or later
- MCC Version 3.45.1 or later

3 Documentation Support

- mTouch® Design Center: <http://www.microchip.com/design-centers/touch-input-sensing/proximity-keys-and-sliders/getting-started>
- mTouch® Capacitive Sensing Library Module for MPLAB® X Code Configurator Online User's Guide: <http://microchip.wikidot.com/touch:start>
- AN1478 – mTouch Sensing Solution Acquisition Methods Capacitive Voltage Divider
- AN1334 – Techniques for Robust Touch Sensing Design

4 Installing MPLAB® Code Configurator's mTouch® Capacitive Sensing Library

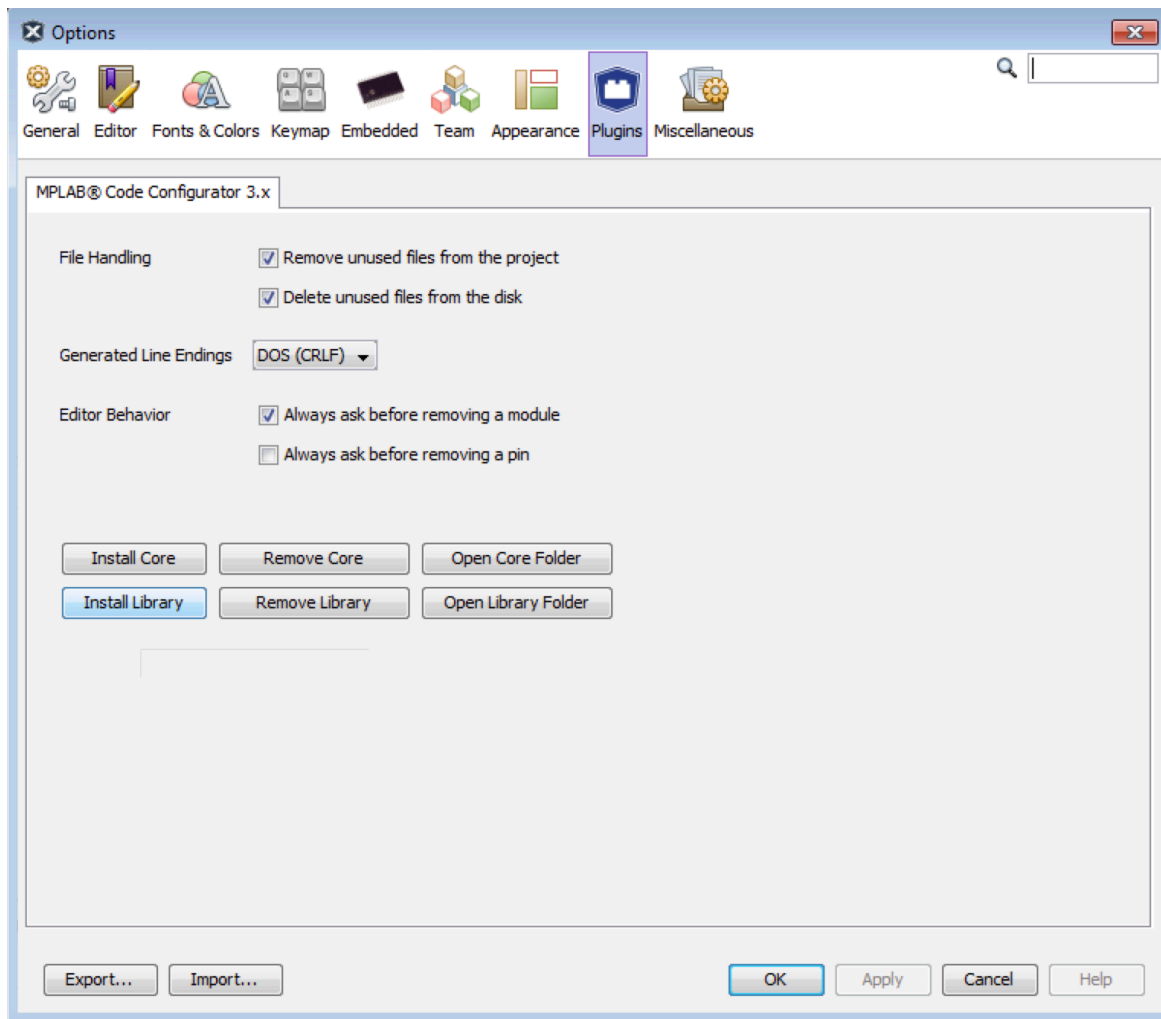
Basic steps for installing MPLAB® Code Configurator needs to be installed as below.

To install the MPLAB® Code Configurator V3.45.1 or later Plugin:

1. In the MPLAB® X IDE, select **Plugins** from the Tools menu
2. Select the **Available Plugins** tab
3. Check the box for the MPLAB® Code Configurator v3, and click on **Install**

To install the MCC mTouch® Capacitive Sensing Library v2.50:

The mTouch library v2.50 is an independent release of MPLAB® Code Configurator 3.45.1 plugin. The user will need to download the library from the MCC website under **Current Download** Section, and then install the library jar file in the MPLAB® X IDE.



1. In the MPLAB® X IDE, open up the **Options** from the **Tools** drop down list, and select the **Plugins** tab.
2. Select **Install Library**.
3. Select the downloaded mTouch jar file.
4. After adding the library, restart the MPLAB® X IDE

5 What's New

- New UI window
- Reburst feature
- Slider and wheel support
- Button/Proximity Sensor Suspend and Disable feature
- Button/proximity hysteresis feature
- Data Visualizer sensor name display

6 Repairs and Enhancements

- Improvement for ADC² CVD scan waveform for less EMC emission
- Fixed bugs in button and proximity module

7 Known Issues

- The Timer2/4/6/8 module that is used by mTouch might generate unnecessary warnings in some circumstances.
- If the user changes the settings of other peripheral (EUSART and Timer1) modules, which is used by mTouch module, the touch behavior could be changed.

8 Frequently Asked Questions

For frequently asked questions, please refer to the FAQ post on the [MCC Forum](http://www.microchip.com/forums/f293.aspx) (<http://www.microchip.com/forums/f293.aspx>)

9 Supported Families

The MCC mTouch® Capacitive Sensing Library v2.50 supports the following families with 10-bit SAR ADC and 12-bit SAR ADC².

9.1.1 8 bit Families

PIC12F1xxx
PIC16F1xxx
PIC16F1xxxx
PIC18FxxK40
PIC18FxxK42
PIC18FxxQ10

10 Customer Support

10.1 The Microchip Web Site

Microchip provides online support via our web site at <http://www.microchip.com>. This web site is used as a means to make files and information easily available to customers. Accessible by using your favorite Internet browser, the web site contains the following information:

- Product Support – Data sheets and errata, application notes and sample programs, design resources, user's guides and hardware support documents, latest software releases and archived software
- General Technical Support – Frequently Asked Questions (FAQs), technical support requests, online discussion groups/forums (<http://forum.microchip.com>), Microchip consultant program member listing
- Business of Microchip – Product selector and ordering guides, latest Microchip press releases, listing of seminars and events, listings of Microchip sales offices, distributors and factory representatives

10.2 Additional Support

Users of Microchip products can receive assistance through several channels:

- Distributor or Representative
- Local Sales Office
- Field Application Engineering (FAE)
- Technical Support

Customers should contact their distributor, representative or field application engineer (FAE) for support. Local sales offices are also available to help customers. A listing of sales offices and locations is available on our web site.

Technical support is available through the web site at: <http://support.microchip.com>