



Technical Note

Using PKTX Emulation with the 5136-SD-PCI/ SST-DHP-PCI Card under Win2000/XP

Version: 1.1

Document #: 718-0002



Version: 1.1

Date: March 28, 2006

This document applies to 5136-SD-PCI module and PKTX Emulation under Win2000/XP.

Copyright ©2006 Woodhead Software & Electronics, Division of Woodhead Canada Limited

This document and its contents are the proprietary and confidential property of Woodhead Industries Inc. and/or its subsidiaries and may not be used or disclosed to others without the express prior written consent of Woodhead Industries Inc. and/or its subsidiaries.

SST is a trademark of Woodhead Software & Electronics. All other trade names are trademarks or registered trademarks of their respective companies.

At Woodhead, we strive to ensure accuracy in our documentation. However, due to rapidly evolving products, software or hardware changes occasionally may not be reflected in our documents. If you notice any inaccuracies, please contact us (contact details at the end of this Technical Note).

Written and designed at **Woodhead Software & Electronics, 50 Northland Road, Waterloo, Ontario, Canada N2V 1N3.**

Hardcopies are not controlled.



Topic Overview

You can use the SST-DHP-PCI interface card with RSLinx to communicate with Allen-Bradley PLCs and other devices over Data Highway Plus. In RSLinx, the card emulates a 1784 PKTX card.



Note

This functionality is only available under Windows 2000 and Windows XP.

About this Technical Note

This note explains how to:

- Configure the card for PKTX Emulation
- Set up a 1784-PKTX driver in RSLinx

Troubleshooting tips and Technical Support contact information are also provided.

This note is valid for part numbers 5136-SD-PCI and SST-DHP-PCI. The two cards are functionally identical, with the 5136-SD-PCI being a 5V-only card and the SST-DHP-PCI being a 3.3V/5V card.

Assumptions

- You're familiar with SST-DHP-PCI cards and Rockwell's RSLinx software
- You're familiar with Windows 2000/XP operating systems and diagnostics tools
- The DHP interface card is installed according to the hardware documentation
- The SST AB Software and RSLinx are successfully installed



Hardware Used

| | |
|--|-------------|
| <input checked="" type="checkbox"/> Interface card | SST-DHP-PCI |
| <input checked="" type="checkbox"/> Physical I/O | N/A |

Software Used

| | |
|---|--|
| <input checked="" type="checkbox"/> Operating system | Windows 2000 Professional |
| <input checked="" type="checkbox"/> Any other software required (network configuration software) | RSLinx Revision 2.40.01 SST SD Products Install, V2.8 or higher |

Recommended Reading

- SST-DHP-PCI/5136-SD-PCI Hardware Reference Guide
- Rockwell's RSLinx documentation

Procedure



Note

RSLinx must be installed prior to setting the SST-DHP-PCI to PKTX mode.



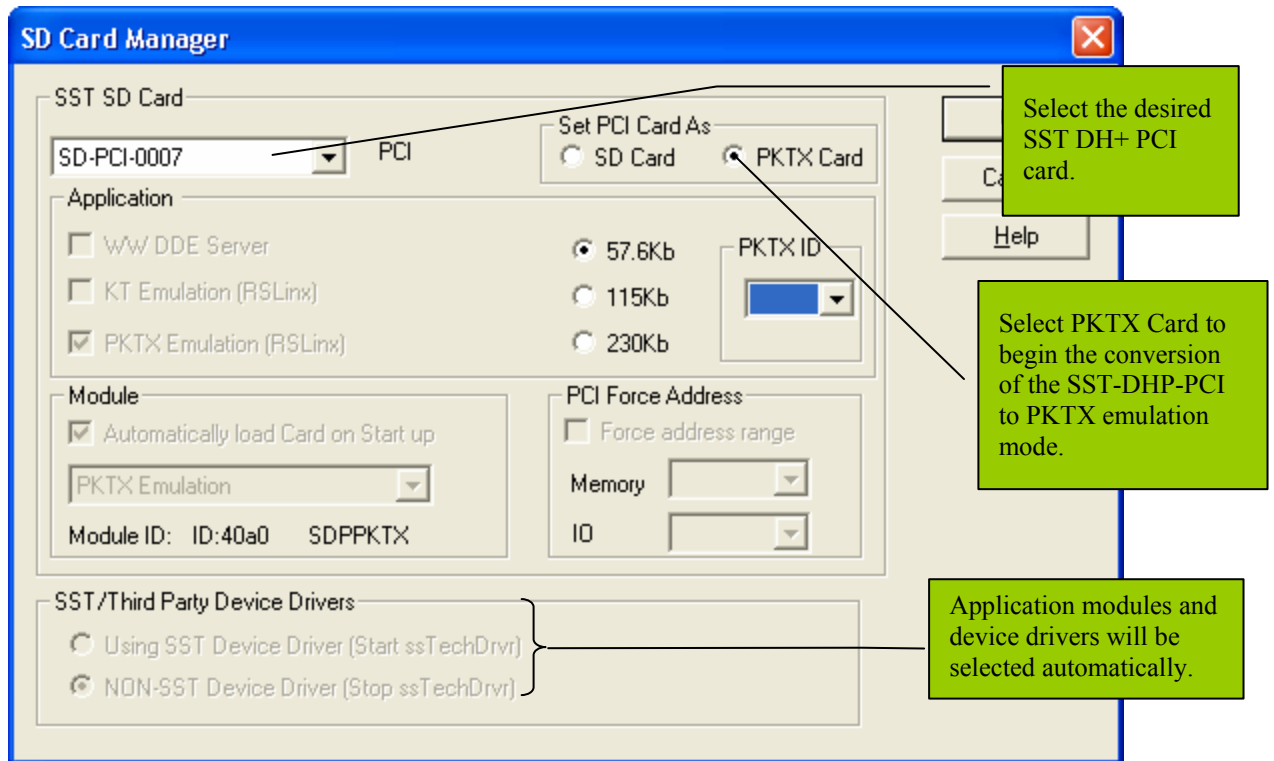
Note

Versions 2.0-2.7 of the install supported only a single SST-DHP-PCI card in the computer in PKTX mode. With version 2.8 and later, a maximum of two SST-DHP-PCI cards can be used in PKTX mode.

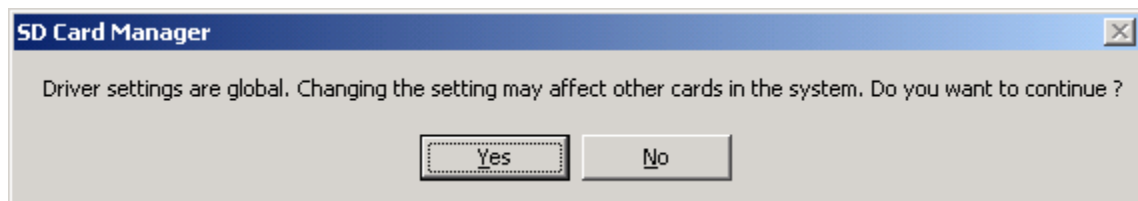


To configure the card, follow these steps:

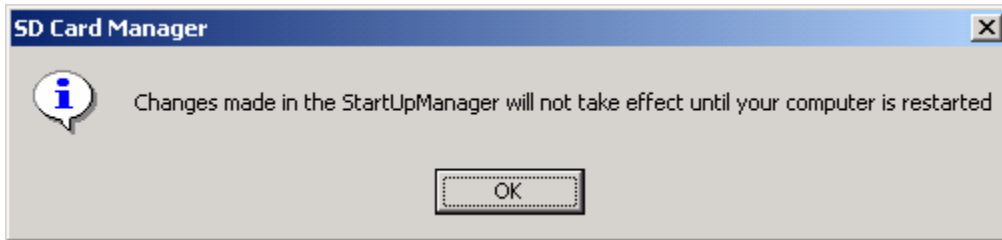
1. Go to *START>Programs>SST>AB> SD Card Manager*. The SD Card Manager is displayed.



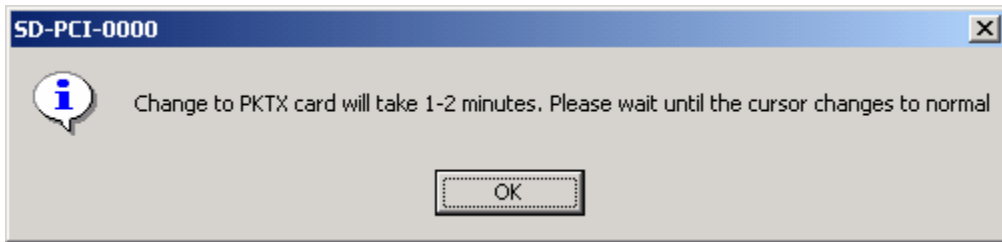
2. Adjust the settings, as displayed above.
3. Click **OK**. The Driver Settings Prompt is displayed.



4. Click **Yes**. The Restart Prompt is displayed.

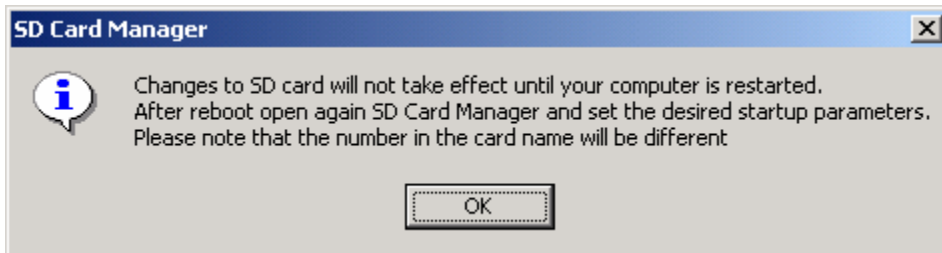


5. Click **OK**. The Change Duration Prompt is displayed.



6. Click **OK**, and wait while the card reconfigures. This could take several minutes.

7. After reconfiguring has finished, the Startup Parameters Prompt is displayed.



8. Click **OK** and restart the computer.

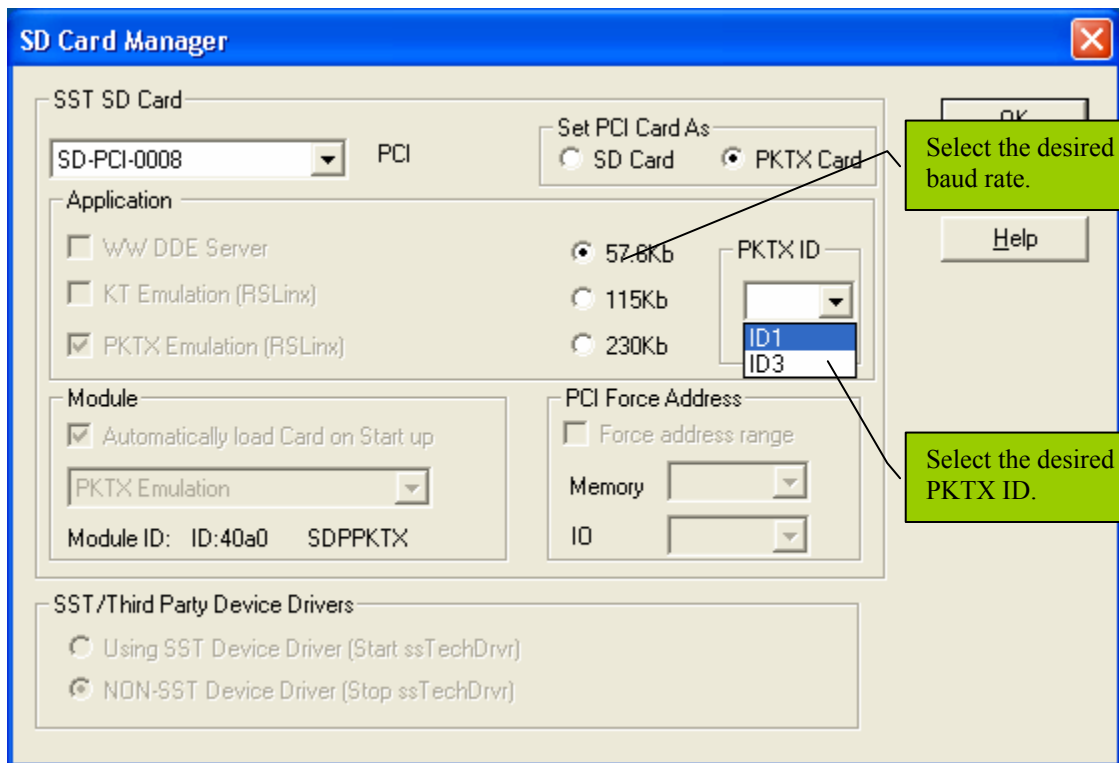
9. Open SD Card Manager and select the desired baud rate, as displayed below.

Select ID1 or ID3 for the PKTX ID.

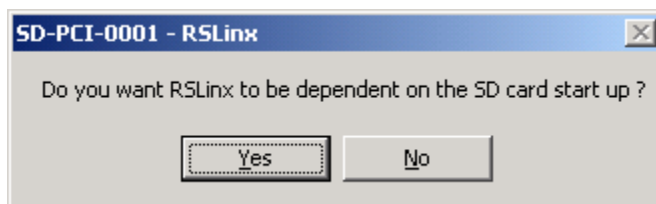


Note

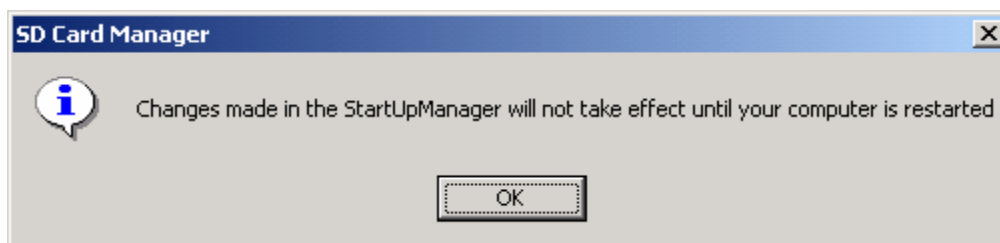
If you're configuring two SST-DHP-PCI cards in PKTX mode, they must use separate IDs.



10. Click **OK**. The RSLinx Depend Prompt is displayed.



11. Click **Yes**. The Restart Prompt is displayed.

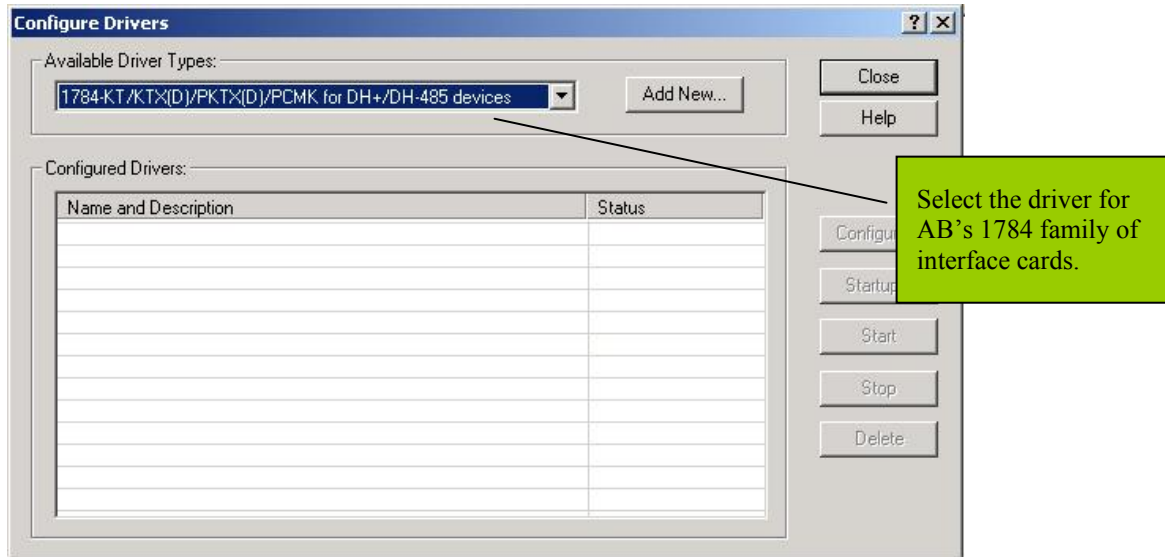


12. Click **OK** and restart the computer.

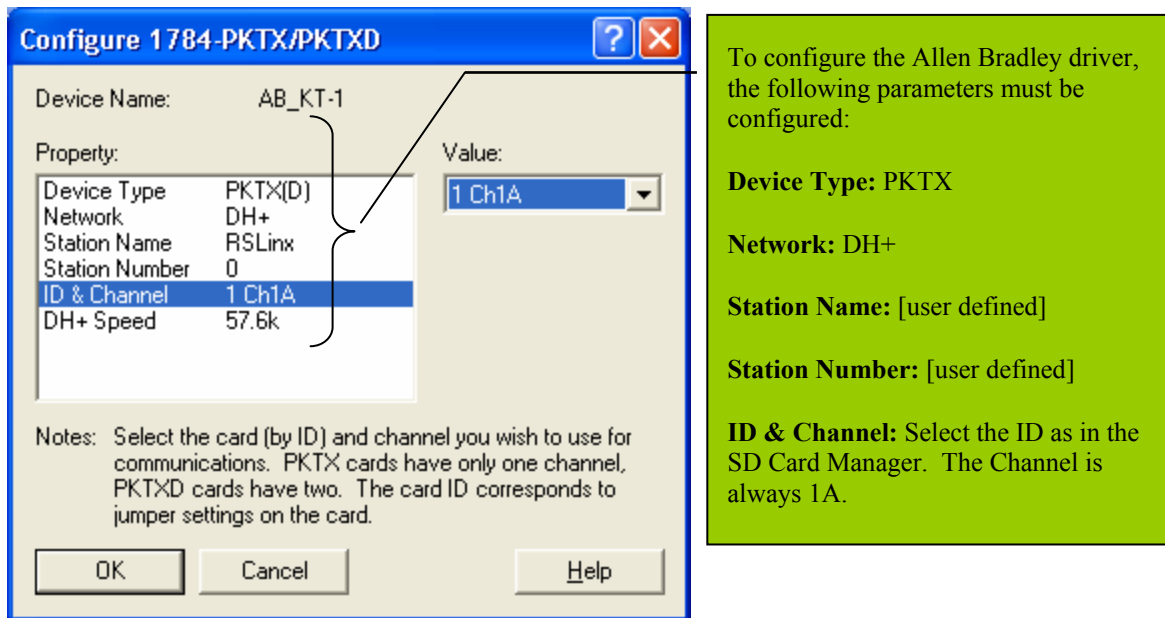
13. Repeat for a second card, if needed.



14. Run RSLinx and select *Communications > Configure Drivers*. The Configure Drivers screen is displayed.



15. Select the driver, as displayed above, and click **Add New...**. The Configure Screen is displayed.





16. Configure the parameters, as displayed above, and click **OK**.



Note

RSLinx will report if the driver is running without error. If RSLinx cannot find the card, it will report an error.

Troubleshooting

If RSLinx reports an error:

1. If the red SYS LED is on, the PCI card was not successfully configured. Follow the procedure outlined in this Technical Note.
2. Use the Computer Management console to ensure that the sstSDScardStartup service is in automatic mode and running.
3. If you are unable to resolve the error, contact [Technical Support](#).



Technical Support

Technical Support is available during regular business hours by telephone, fax or email from any Woodhead Software & Electronics office, or from <http://www.woodhead.com/>. Documentation and software updates are also available on the website.

North America

Canada:

Tel: 1-519-725-5136

Fax: 1-519-725-1515

Email: SupportNA@woodhead.com

Europe

France:

Tel: 33-(0)2-32-96-04-22

Fax: 33-(0)2-32-96-04-21

Email: SupportEU@woodhead.com

Germany:

Tel: 49-711-782-374-22

Fax: 49-711-782-374-11

Email: SupportEU@woodhead.com

Italy:

Tel: 39-010-595-4052

Fax: 39-010-595-6925

Email: SupportEU@woodhead.com

Other countries:

Tel: 33-(0)2-32-96-04-23

Fax: 33-(0)2-32-96-04-21

Email: SupportEU@woodhead.com



Asia-Pacific

Japan:

Tel: 81-3-5791-4621

Fax: 81-3-5791-4688

Email: SupportAP@woodhead.com

Singapore:

Tel: 65-6261-6533

Fax: 65-6261-3588

Email: SupportAP@woodhead.com

China:

Tel: 86-21-5835-9885

Fax: 86-21-5835-9980

Email: SupportAP@woodhead.com

For the most current contact details, please visit <http://www.woodhead.com/>.