

Sage Advice *Live*

Strategies for the future of work

3 September 2020

Introducing our panel

sage



Mark Jones

CEO & Chief Storyteller
Filtered Media



Kerry Agiasotis

Executive Vice President
Sage Asia Pacific



Christine Cocuzza

National Payroll Manager
AFL



Rhonda Brighton-Hall

Founder & CEO
Making Work Absolutely
Human (MWAH)



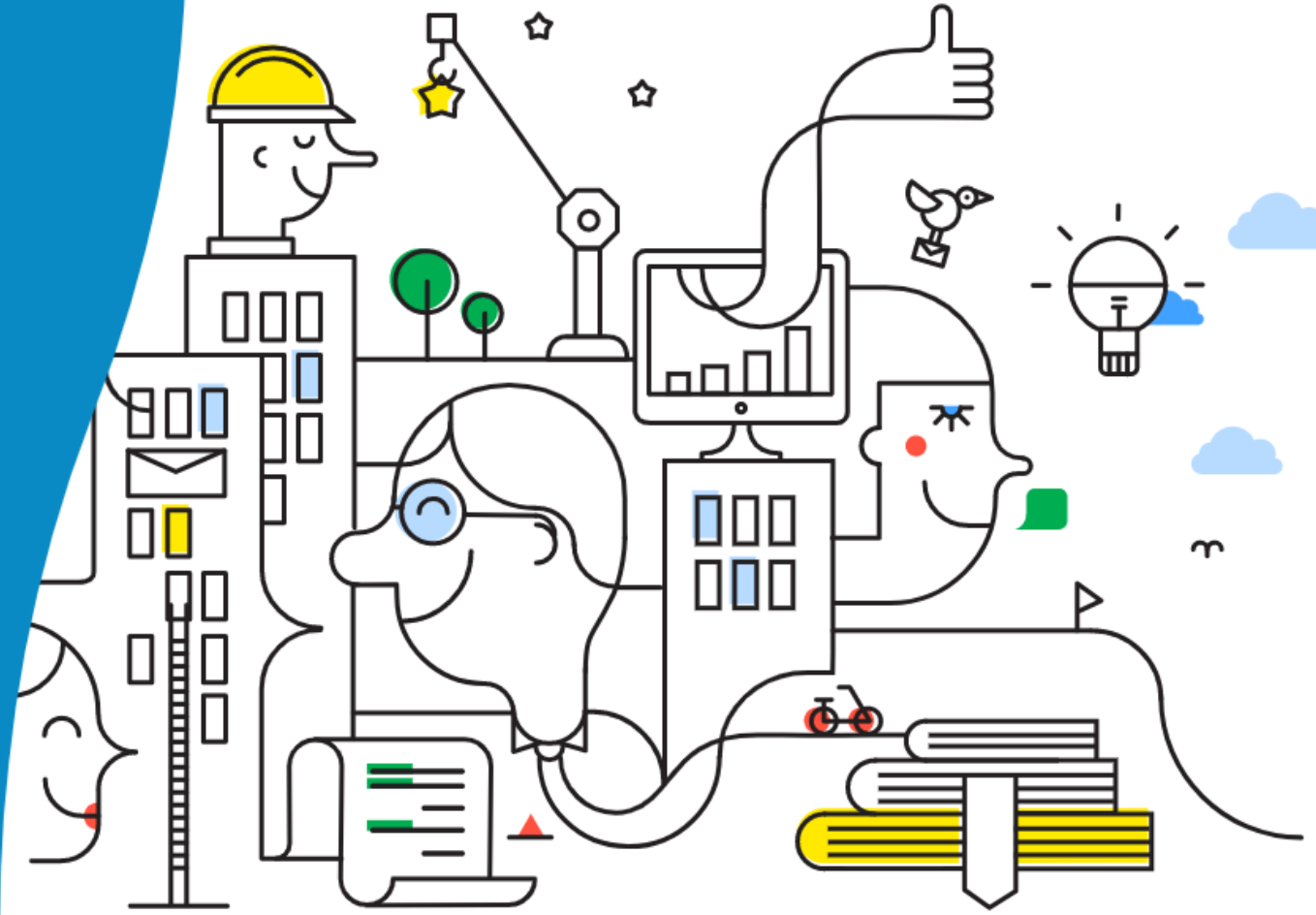


Rhonda Brighton-Hall

Founder & CEO,
Making Work Absolutely Human (MWAH)

Strategies for the Future of Work

Rhonda Brighton-Hall

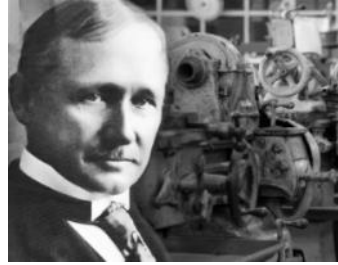


History

Out of the field and into the factories



40 hour work week – 5 days x 8 Hours



The technology or digital revolution



Bringing Humanity back because it matters

1760-1840
First Industrial Revolution

1840+
Crazy ways of working

1860
Geneva Working Man's Convention

1930s
Scientific Management

1950s
Third Industrial Revolution

1990s
Speed vs People

2020s
People & Biz



Take their toll on the working class



The rise of Taylorism as we seek to go faster



Speed and scale over everything. Work fractures.



Co-Curation



The reset of the whole psychological contract around work

Poll question

- How well has your team coped with new processes this year?
 - *Mostly well*
 - *Not too bad*
 - *With difficulty*



In conversation with....

Christine Cocuzza

National Payroll Manager, AFL

Poll question

- What's your primary focus in the next three months?
 - *Human resource programs*
 - *Payroll systems and updates*
 - *Office/remote work planning*

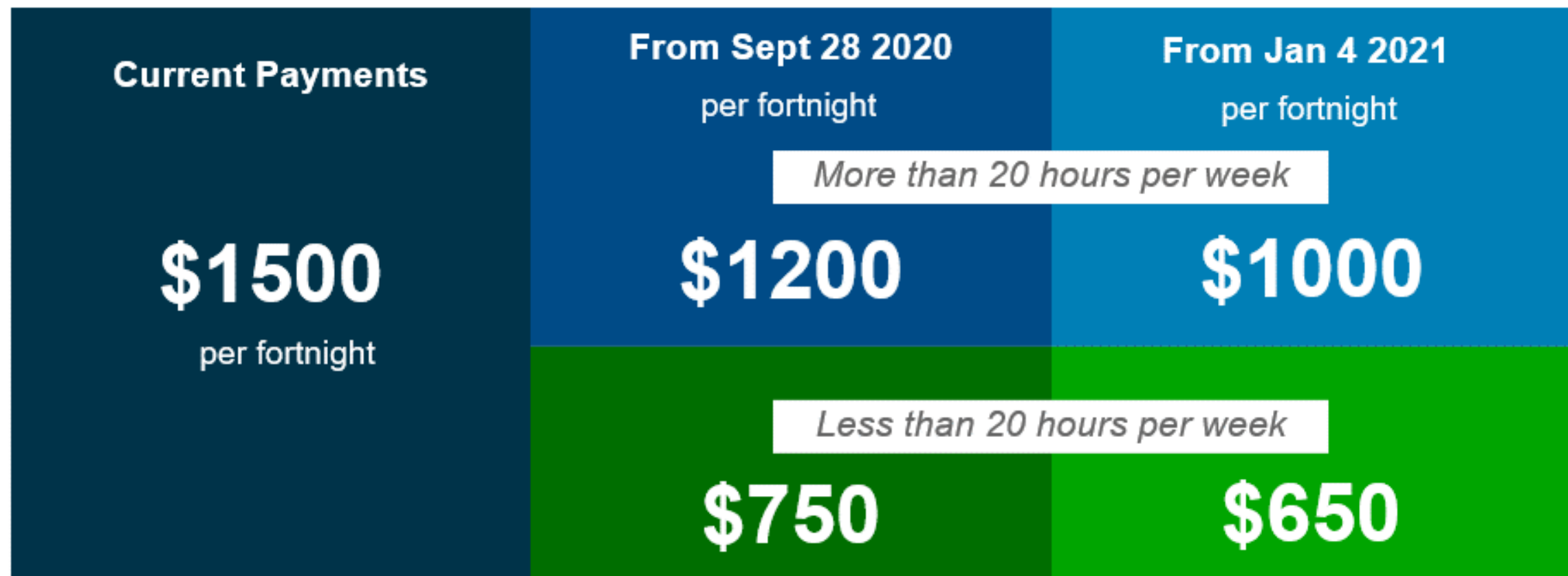


In conversation with....

Kerry Agiasotis

MD & EVP, Sage APAC

Change to JobKeeper payments



- Extension to JobKeeper passed by Government this week – now will end March 28 2021
- Further changes were announced in August to allow eligibility for employees from 1st July
- Government estimates from October onwards more people will be on JobKeeper in Victoria than the rest of Australia

Technology driven agile workforce

An adaptive workforce uses technology to be more agile, aligned, flexible and connected, able to quickly respond to uncertainty and changing priorities.



Become a **faster**, more **responsive** and **connected** organisation to support societal and business change, while enabling rapid, **data driven decision making**.



Embed a culture of **cross functional**, team-based **collaboration** and continuous improvement; optimising business outcomes and delivering better experiences.



Be better prepared to respond to uncertainty and ambiguity, with a **resilient** and **agile** organisation that's **accessible**, **flexible**, **robust and secure** supported by cloud technology.

Panel Discussion

sage



Mark Jones

CEO & Chief Storyteller
Filtered Media



Kerry Agiasotis

Executive Vice President
Sage Asia Pacific



Christine Cocuzza

National Payroll Manager
AFL



Rhonda Brighton-Hall

Founder & CEO
Making Work Absolutely
Human (MWAH)



Sage Advice *Live*

Thank you

sage.com/en-au/

sage