



# Samsung Airport Display Solutions

Providing information to passengers through state-of-the art technology

SMART Signage | LED Signage | Monitor | SSSP Solution | MagicINFO Solution

**SAMSUNG**





## Create passenger satisfaction with exceptional streamlined performance

Navigating through an airport is never easy and with the increasing amount of travelers at airports, it is more difficult than ever. As airports find ways to direct passengers throughout their journey, they are beginning to rely on digital signage more than ever. With its one-of-a-kind design, ability to produce brilliant images with an anti-glare screen and reliable performance, Samsung's displays are a perfect fit for any airport.

Providing information to passengers from the entrance to the gate, digital displays can easily guide them with little confusion. By utilizing digital displays, airports are finding a cost efficient way to manage the airport, passengers and improve operational efficiencies. Advertising is one of the major non-aeronautical revenue earners for airports. Utilizing the right selection of Samsung's digital displays throughout an airport is an incredible way for businesses to feature its brand and products to passengers as they are in the airport. With dynamic imagery and creative content, passengers will be drawn to a store, restaurant or pub. Businesses are ensured that as travelers eat and shop in its establishments; providing additional non aeronautical revenue and passenger satisfaction.





## Continuous distribution of information



Concise instructions for airport navigation

## Attractive promotions



Captivating messages leading to increasing non aeronautical revenue

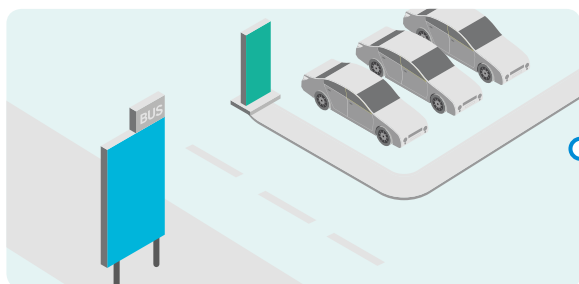
## Airport efficiency management



Increasing airport performance and operating profit

# Modernized airports with advanced information

Finding the perfect way to deliver information to travelers is becoming even more important as messages are coming from numerous sources. As airports have grown larger and passenger numbers have increased, it is imperative information delivered to travelers is concise, easy to understand which increases travelers' satisfaction. Samsung's wide range of digital displays allows airports to deliver the most up-to-date and accurate information to travelers from the moment they step in the door. Not only do the digital displays guide travelers through the airport, they are revolutionizing the way they are managed with innovative operational productivity.



## Parking lot / Bus shelter

Outdoor signage and outdoor LED displays provide directions to travelers while looking for a place to park or the location to be dropped off.



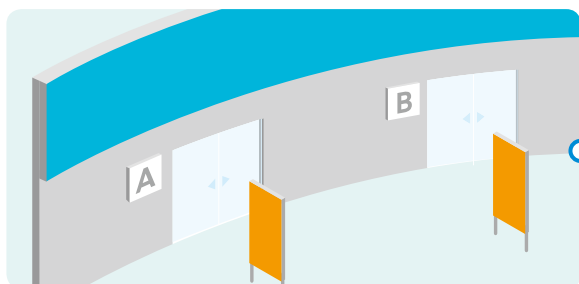
## Airline lounge

Standalone signage seamlessly delivers flight information and airline messages to its passengers while waiting in an airport lounge. With curved monitors, travelers enjoy immersive entertainment and increase productivity while working, waiting to depart.



## Check-in counter / Self check-in

Standalone signage gives travelers directions to the airline counter. With interactive display, travelers are allowed to check into their flight themselves. Curved monitors also increase the CUTE (Common Use Terminal Equipment) operators' productivity.



## Airport entrance

Outdoor signage and outdoor LED displays provide travelers with information from parking lot details, terminal direction and businesses located in the airport to visit. Outdoor LEDs present vivid content that allows for advertising space for non-aeronautical businesses generating additional revenue.



## Security check

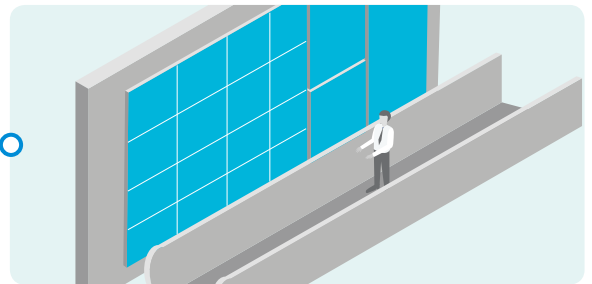
Entering the security line is always dreaded. However, standalone signage provides detailed information to travelers of security procedures and open aisles to ease the process.





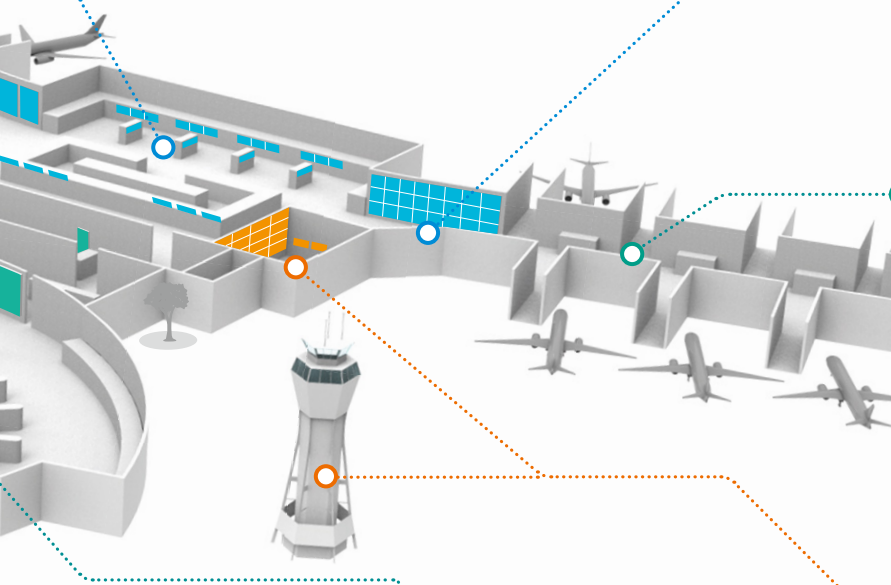
### Duty-free shops & restaurants

Standalone signage and indoor LEDs provide promotional content from shops, events or city information. Restaurants or pubs incorporate video walls into their stores utilizing them as digital menu boards.



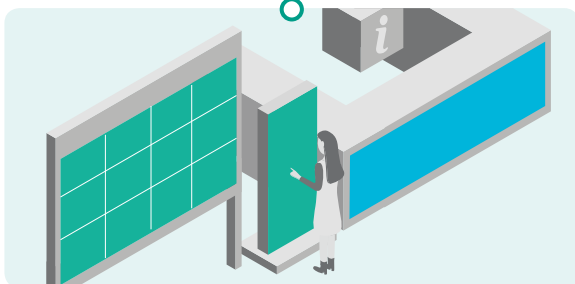
### Passenger walkways

Indoor LEDs and video walls highlight the culture and heritage of a country to passengers and captivate them with attractive advertising.



### Gate

Standalone signage delivers up-to-date flight data to passengers waiting at the boarding gate. During the wait, outdoor signage can feature last minute retail and food purchases to maximizing airport and businesses profits.



### Flight information / Wayfinding

Standalone signage, indoor LED signage and video walls provide the most up-to-date gate details and flight times to passengers. Interactive displays provide detailed information to travelers, enhance their understanding of the airport and reduce pinch points.



### Control center / Air traffic control

Indoor LEDs and video walls allow the airport workers to monitor and manage the entire airport in airport operation control center (AOCC), ensuring passengers' safety. High-resolution curved monitors and interactive displays can be used to control air traffic.

# Innovative solutions for passenger efficiency during travels

As some airports can be difficult to navigate, finding pertinent information and airport details as soon as you arrive is important. From parking lots, bus stations to the transition between ticketing, security and the gating area large and bright displays can provide this information. Also, being knowledgeable about the location of duty-free stores and shops is important. Digital displays present all the information needed to maneuver through the airport with each.

## Airport arrival

Upon arriving to the airport, large outdoor LEDs and outdoor signage provide terminal directions and parking lot locations beginning the journey without confusion.



Outdoor LED Signage



Outdoor Signage

## Parking

With the use of outdoor LEDs and outdoor signage, parking spaces can easily be located without spending time driving around.



Outdoor LED Signage



Outdoor Signage

## Check-in

Passengers easily find their check-in counter through brilliant airline images on digital signage. Interactive displays allow passengers to change seats and receive their boarding pass seamlessly.



Standalone



Video Wall



Interactive Display



Monitor

## Shopping

Get various promotional messages about duty-free shops on indoor LEDs and video walls while traveling through an airport. Then, enjoy shopping while waiting for the plane to depart.



Standalone



Indoor LED



Video Wall

## Leaving airport

When departing from the airport, outdoor LEDs and outdoor signage clearly show where the rental car location, taxi stations and bus routes are located.



Outdoor LED Signage



Outdoor Signage

## Baggage claim

Find luggage quickly and easily with freestanding standalone displays. While travelers wait, the airport or businesses can deliver its final advertising messages on the video walls to maximize customer impact.



Standalone



Video Wall

## Traveling

After boarding on time, enjoy a smooth flight to the destination whether it is for work or pleasure.

## Security check

Standalone and video wall displays provide useful information about the security line, rules and items that are prohibited, enabling a smooth transition through the line.



Standalone



## Waiting

Standalone displays, indoor LEDs and video walls deliver up-to-date flight information and entertainment options ensuring minimal down time for passengers. The digital displays also deliver F&B and wayfinding information to easily decide where to go.



Standalone



Indoor LED



Video Wall



## F&B areas

Standalone and video wall displays deliver F & B information to easily decide where to go by comparing menus on screens.



Standalone



Video Wall



## Relaxing

While relaxing in a lounge, passengers get real-time flight information from standalone signage so they do not miss their flight. In addition, they can enjoy entertainment and work productively with high resolution curved monitors.



Monitor



Standalone



## Boarding

Real-time and up-to-date information on standalone signage ensures an on-time departure.



Standalone



Outdoor Signage

## Moving

View dynamic commercials and entertainment options while on the move throughout the airport on indoor LEDs and video walls.



Indoor LED



Video Wall



## UHD standalone signage: QMN, QMH series

### Intelligent picture quality

Clear information delivery is vital for airport. Samsung's UHD standalone displays leverage Intelligent Picture Quality technology to elevate content delivery in any setting. This refined presentation transforms content from any source to UHD-level quality, and optimizes on-screen text and imagery with fine details. With non-glare panels, the QMN and QMH series deliver information with optimized images and crisp edges and fine detail.



Intelligent UHD



Intelligent HDR+



Intelligent Picture Mode



Anti Glare

### Streamlined operational efficiency

The embedded MagicINFO Player, backed by the powerful TIZEN operating system, boosts the displays overall performance, allows for painless content management and seamless content transition. Built to be reliable and long lasting, Samsung's QMN and QMH displays perform with continuous information enabling airports to be assured that travelers messages will be delivered 24/7 and in real-time.



Tizen



Powerful Performance



Seamless Playback



24/7

## FHD standalone signage: PHF, PMH series

### Clear content delivery with slim design

Samsung's TIZEN-powered FHD standalone displays achieve peak performance all while maintaining a stylish and captivating design. The PHF and PMH series leverage elevated brightness and refined image sharpness to ensure a consistently clear presentation even in settings with variable lighting. Uninterrupted, 24/7 content delivery is always assured regardless of surrounding conditions.



FHD



Slim Depth



Tizen



24/7

### Powerful performance and simple usability

Samsung's PHF and PMH series are IP5x certified, signifying their dust-resistant design and ability to withstand a range of environmental conditions. Equipped with a non-glare frontal panel, the PHF and PMH series discover heightened image visibility and information readability under light. Additionally, the standalone displays' integrated centralized infrared receiver (IR) ensures easier and more flexible user control.



IP5X



Anti Glare



Centralized Management



Central IR





## Outdoor signage: OHF series

### All-in-one outdoor solution

Samsung's OHF series outdoor signage delivers an all-inclusive engagement solution that is completely equipped for virtually any outdoor environment. Along with the added convenience of an embedded power box, the OHF series displays ensure durability, flexibility and 24/7 performance even in extreme temperatures. Additionally, the OHF displays leverage a filter-less self-cooling system for easy maintenance and reduced TCO.



All in One Design



Power box embedded



Cooling System



24/7 Operation

### Captivating visibility & superior durability

The OHF displays feature innovative IK10-certified<sup>\*</sup> Magic Protection Glass, TUV-certified image quality and an Auto Brightness sensor to improve picture quality and optimize message delivery for any viewer. When combined, these features produce high 2,500nit brightness and a 5,000:1 contrast ratio that amplify any type of content.

<sup>\*</sup>The IK European strength test rating uses a 0-10 scale (where 10 indicates the highest possible protection) to measure the degree of resistance against external impact)



High Brightness



Auto Brightness Sensor



Superior Durability



Magic Protection Glass

## Semi-outdoor signage: OMD series

### Brilliant presentation in any environment

Samsung's OMD series allows airports to provide attractive and brilliant information to travelers with superior visibility and high brightness in 2,500nit and 5,000:1 contrast ratio. Equipped with a high-TNI panel, the OMD displays prevent blackening of the screen from sunlight exposure, and include circular polarizing technology that eliminates display blindness caused by polarized sunglasses.



High Brightness



High Contrast Ratio



Polarized Sunglasses



Anti Blackening

### Advanced usability with operational efficiency

Samsung's OMD outdoor displays cut operating costs with energy-efficient technology even with high brightness, using an Auto Brightness sensor and customizable brightness range. Also, the OMD series provides multiple connectivity options including Wi-Fi connectivity to support easier management.



Energy Efficient Technology



Auto Brightness Sensor



Superior Durability



Built-in Wifi

## Outdoor LED signage: XPE series

### Superior image quality regardless of conditions

Samsung's XPE series LED signage delivers excellent image quality that captures audience eyes even in challenging environments. Through two-step in-depth calibration, enhanced image processing and an industry-best contrast ratio, the displays deliver accurate and consistent color quality content with a high refresh rate. The XPE series also is equipped to deter light interference, and produce bright images regardless of conditions.



High Refresh Rate



High Brightness



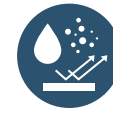
Superior Contrast



Two-step Calibration

### High reliability with proactive expert support

Each XPE series signage undergoes rigorous environmental testing to ensure uninterrupted performance. C3 Contamination and Ionograph testing deters circuit contamination and extends shelf-life. Complementary Climate and Humidity and Salt Fog Chamber exposure additionally ensures performance in variable weather conditions and wet and corrosive elements. In addition to enhanced durability, from inception to installation, Samsung makes the easy outdoor signage experience, providing round-the-clock service.



IP65



Corrosion Proof



Deformation Proof



End-to-end Project Management

## Indoor LED signage: IF series

### Showcase brilliant true-to-life imagery

Through in-depth color management, Samsung's IF series has the ability to preserve constant gradation of images, ensuring pictures are true-to-life. The display uses technology that is nearly twice as high as the standard LED, showcasing airport information and advertisement brilliantly. The IF series contains dynamic peaking technology that elevates images while removing interference from natural lighting.



HDR



Dynamic Peaking



Color Management



Fine-tune Uniformity

### A clean, hassle-free installation

A hook-based design allows IF Series to be mount screens in a single, smooth motion. This seamless installation eliminates gaps while keeping all front and rear components visible and accessible for quick-turn maintenance. The IF Series' compact, durable design also can withstand damage from natural events as strong as a Level 4 earthquake, while also meeting Americans with Disabilities Act (ADA) protrusion regulations.



Direct Mount Kit



Catwalk Space free



Advanced Design



Earthquake Durability

## Video wall display: UHF-E, UHF5 series

### Deeper visual impact with thin bezel

Samsung created the extreme narrow bezel video wall to be a robust display that is impactful to travelers moving through an airport. The wall has a 1.7mm bezel-to-bezel width that yields a seamless picture across multiple screens, and is configured to the airport's needs. Samsung's video wall is a non-glare display that distributes light through the screen, while preserving the vivid pictures and original information.



Narrow Bezel



Non Glare



Enhanced Uniformity



High Contrast Ratio

### Securely stabilized in any configuration

Building a visually appealing video wall that is customizable to any airports, store or duty-free shops within an airport and gives the freedom to design a distinctive display that is exclusive to them. The video wall attaches to a surface with wall mounts sized to dimensions of the video and hidden with no distractions. An easy to understand installation guide elevates steps during installation.



Fine adjustment



Slim depth



Easy Installation



24/7





## Interactive display: PMF-BC series

### Comfortable, multi-point capacitive touch communication

Through capacitive touch technology and a user-friendly design, Samsung's PMF-BC displays foster a comfortable, easy-to-navigate digital writing experience. The interactive displays can accommodate 10 unique touch points\* while maintaining the smooth, familiar feel of analog board or pen-and-paper writing.

\*The number of available touch points varies depending on configuration. Connected external PCs provide the PMF-BC display with 10 touch points, while the integrated operating system supports two additional touch points.



Seamless Touch



Multi Touch



Fast Response time



Intuitive UI

### High reliability & convenient management

Samsung's PMF-BC displays are resilient and require little maintenance, yet are dependable and deliver content effortlessly, allowing airport to inform travelers of terminal maps. This display withstood extensive testing to validate its durability against dust, dirt, vandalism and other factors. Airport staffs are able to control the display, no matter their location, using infrared receivers, for continuous content.



Dust Resistant



Sunlight Resistant



High Reliability



Central IR

## Flip

### Multifaceted collaboration in any setting

Samsung Flip offers a more versatile alternative to analog board and paper notation, centralizing all meeting needs into a single, fully-integrated idea generation forum for simultaneous interaction. Through an intuitive interface and touch-ready design, Samsung Flip fosters a smooth, natural writing experience. The Flip display also allows users to import the information from their personal devices, and share the notes via email effortlessly. Through collaborative decision-making, airport staffs can determine how to manage the integral components of operating an airport.



Smooth touch



Capture



Preview & Navigation



Document Reader



Versatile Connectivity



Touch Out



Sharing via Email



LDAP Synchronization



### How to decide which display is right for you

Choosing the display that is right for a business depends on many different features.

**LED signage:** If the user wants to mount a display on a curved location or adhere it to the ceiling, LED signage must be chosen. The LED displays are available in many different sizes for customization, and play seamless content for indoor and outdoor use.

**Video wall:** Available in two sizes, 46-inch or 55-inch the video walls have higher resolution than LEDs and allow users to project brilliant imagery even when viewing at a close distance.





## Curved monitor

### Powerful comfort with a user-friendly design

Samsung's curved monitor unifies viewing angles and prevents excessive movement when viewing content with its curved design. Workers can optimize their viewing dimensions with a height-adjustable stand and pivot, swivel and tilt options. In any configuration, specialized Eye Saver and Flicker Free Modes reduce the impact of blue light emissions and overall distortion for more comfortable long-term performance.



Curved Screen



HAS-Swivel-Tilt



Eye Saver Mode



Flicker Free

### Convenient multi-tasking

By condensing multi-monitor setups into a single, powerful high-resolution screen, Samsung's curved monitors drive smarter and simpler multitasking. The displays' broad panel presents entire data-rich tables within one screen, offering clearer visibility and interpretation without time-consuming scrolling or zooming. Users also can reformat and reposition content from multiple sources within a single viewing plane through Picture-by-Picture, Picture-in-Picture and Easy Setting Box technologies.



32:9 Super  
Ultra-wide screen



Easy Setting Box



Picture in Picture



Picture by Picture

## High resolution monitor

### Amplified visual details

Samsung professional business monitors bring even the most minor visual details to the forefront, better enabling workers to do their jobs accurately and in less time. Samsung UHD monitors in particular features a quantum dot composition and a resolution nearly four times higher than that of standard FHD displays, enabling clear and colorful visibility of multiple webpages, images and text without extensive scrolling or zooming.



UHD



WQHD



QD

### Distraction-free all-inclusive workstation

Samsung's high-resolution professional business monitors provide a compact, all-inclusive workstation ideal for distraction-free professional success. Extensive connectivity powers seamless content exchange between personal devices and monitors without a dedicated hub or application. And with USB Type-C connectivity and seamless multi-screen daisy chaining, Samsung's business monitors inspire a tidy, yet powerful workspace.



USB Type-C



Daisy Chain



Docking Free



KVM Switch



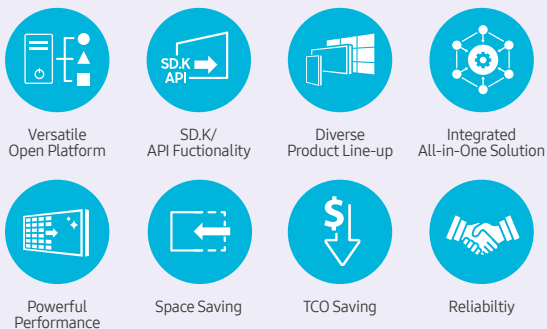
# Samsung's solutions and services

Samsung's digital signage solutions allow airports to have a greater ability to manage all of the devices, delivering the most up-to-date information to travelers.

## Samsung's airport solution

### SSSP solution

The Samsung Smart Signage Platform (SSSP) is an, open-source all-in-one solution that is embedded in Samsung's SMART signage and doesn't require any additional devices to communicate with the server and play digital media. Managing digital signage has never been easier with SSSP platform that essentially replaces an external media player with a SoC-based app launcher. SSSP is a robust platform that is designed to give partners the freedom to create software on their Samsung displays, resulting in an integrated media player.



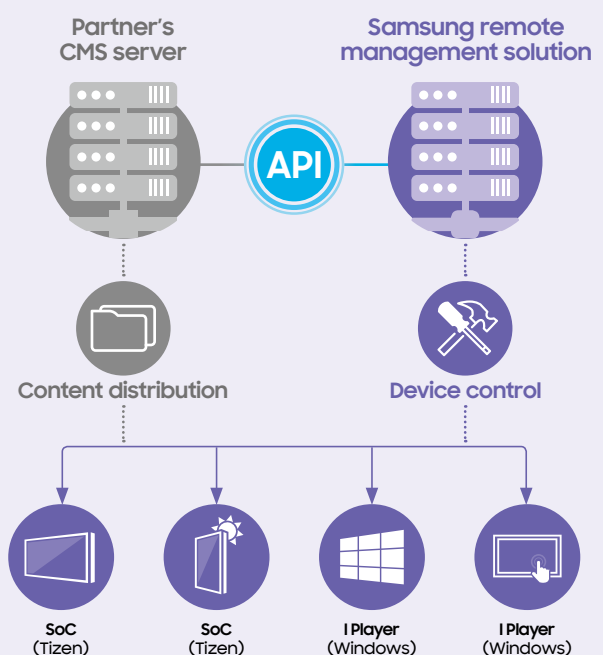
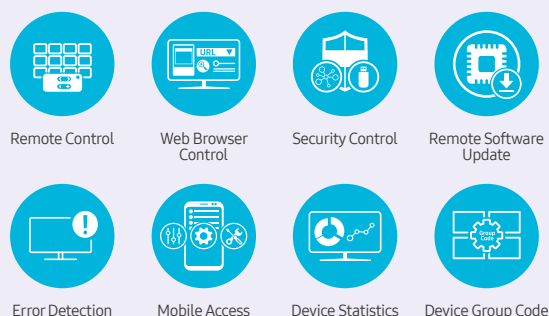
### MagicINFO solution

Samsung's comprehensive MagicINFO platform can remotely manage both hardware and software through one single-point management system. With this solution, airports can conveniently create, schedule and deploy content across its entire digital signage network. MagicINFO enables content teams to update airport and flight information from any location at any time that creates greater user control from one central location. The platform also is compatible with a host of display types, ensuring the delivery of compelling content regardless of the operational framework.



### Remote management solution

For a SSSP Partner that has its own CMS solution, Samsung MagicINFO Remote Management Solution is a perfect fit for advanced needs. Samsung Remote Management Solution allows in-depth remote monitoring of the digital devices and eliminates the need for site visits or service calls. The Remote Management Solution platform synchronizes with airports' CRM and provides a complete review of hardware and display content. Though its install package is the same with MagicINFO Server, there is a separate license key for Samsung's Remote Management Solution.



# Specification

## LED signage

	Project	Pixel Pitch	Diode Type	Brightness (× Dynamic Peaking applied)	Contrast Ratio	Certification	Cabinet Size	Weight	Service	IP Rating
Indoor	IFJ	P1.2	Surface Mount Device	1200 nit	4,000:1	EMC Class B, Safety 60950-1	806.4x453.6x76.7mm (LxHxD, per cabinet)	11.8kg/cabinet	Front Service and Part Rear Service	IP20
	IFH	P1.5, 2.0, 2.5	Surface Mount Device	1600 nit (P1.5) 2400 nit (P2.0, 2.5)	5,000:1	EMC Class A, Safety 60950-1	480x540x65mm (LxHxD, per cabinet)	5.8kg/cabinet	Front Service and/or Rear Service	IP20
	IFH-D	P2.5, 4.0, 6.0	Surface Mount Device	2400 nit (P2.5) 1700 nit (P4.0) 1800 nit (P6.0)	5,000:1	EMC Class A, Safety 60950-1	480x720x65mm (LxHxD, per cabinet)	7.4kg/cabinet	Front Service and/or Rear Service	IP20
Outdoor	XPE	P6, P8, P10	Surface Mount Device (P6, P8, P10)	7500 nit	8500:1 (P6) 10000:1 (P8, P10)	EMC Class A, Safety 60950-1	203x203mm (LxH, per module) (P6) 264x297mm (LxH, per module) (P8) 330x165mm (LxH, per module) (P10)	0.54kg/module (P6) 1kg/module (P8) 0.69kg/module (P10)	Front Service and/or Rear Service	Silicone sealed (Module IP67, Cabinet IP65) (P6, P8) Silicone sealed (IP65) (P10)
	XAF	P6, P8, P10, P16	Surface Mount Device (P6, P8, P10) DIP type (P16)	6300 nit (P6, P8) 6750 nit (P10) 7700 nit (P16)	3000:1	EMC Class A, Safety 60950-1	960x960x142mm (LxHxD, per cabinet) (P6, P8, P10) 960x960x154mm (LxHxD, per cabinet) (P16)	56kg/cabinet (P6, P8) 56kg/cabinet (P10) 55kg/cabinet (P16)	Rear Service	IP65/45

## Outdoor signage

	Project	Screen Size	Resolution	Brightness	Contrast Ratio	Operation Hour	Certification	Connectivity	S/W
Outdoor	OHF	46"	1920 x 1080	3000nit	5,000:1	24/7	IP56 Certified	2 HDMI, HDBaseT(LAN Common), HDCP 2.2, USB 2.0, Stereo Mini Jack(out), RS232C (In/Out), RJ45 (In/Out), HDBaseT	Built-in MagicInfo Player S4, SSSP 4.0
		55"	1920 x 1080	2500nit	4,000:1	24/7	IP56 Certified	2 HDMI, HDBaseT(LAN Common), HDCP 2.2, USB 2.0, Stereo Mini Jack(out), RS232C (In/Out), RJ45 (In/Out), HDBaseT	Built-in MagicInfo Player S4, SSSP 4.0
		75"	1920 x 1080	2500nit	5,000:1	24/7	IP56 Certified	2 HDMI, HDBaseT(LAN Common), HDCP 2.2, USB 2.0, Stereo Mini Jack(out), RS232C (In), RJ45 (In), HDBaseT	Built-in MagicInfo Player S4, SSSP 4.0
		85"	3840x2160	2500nit	3,000:1	24/7	IP56 Certified	2 DP1.2 @UHD 60Hz, 2 HDMI 1.4 @UHD 30Hz, HDBaseT, HDCP1.4, USB 2.0, Stereo Mini Jack(out), RS232C (In), RJ45 (In), HDBaseT	-
Semi Outdoor	OMH	32"	1920 x 1080	1000nit	3,000:1	16/7	-	1 DP, 2 HDMI, HDCP1.4, USB 2.0, Stereo Mini Jack(out), RS232C (In/Out), RJ45 (In/Out), HDBaseT	Built-in MagicInfo Player S4, SSSP 4.0
	OMD-W	46", 55", 75"	1920 x 1080	2500nit	5,000:1	24/7	-	Analog D-SUB, DVI-D, Display Port 1.2, 2 HDMI, Component(CVBS Common), HDCP1.4, USB 2.0, Stereo Mini Jack, RS232C (In/Out), RJ45	Built-in MagicInfo Player S2, SSSP 2.0

## Video wall display

Project	Screen Size	B-to-B(mm)	Bezel Width	Resolution	Brightness	Haze	Operation Hour	Connectivity
UHF-E UMF-E	55"	1.7mm	1.15 mm(U/L) 0.55 mm(R/B)	1920 x 1080	700 nit(UHF-E) 500 nit(UMF-E)	25%	24/7	Analog D-SUB, DVI-D, Display Port 1.2, 2 HDMI, Stereo mini Jack(in/out), DP1.2(Loop-out), RS232C(in/out), RJ45, Detachable type external sensor (IR, Ambient)
UDE-A UDE-B	46", 55"	3.5mm	2.3mm(U/L) 1.2mm(R/B)	1920 x 1080	700 nit(UDE-A) 500 nit(UDE-B)	25%	24/7	Analog D-SUB, DVI-D, Display Port 1.2, 2 HDMI, Stereo mini Jack(in/out), DP1.2(Loop-out), RS232C(in/out), RJ45, Detachable type external sensor (IR, Ambient)
UHF5	46"	5.5mm	3.4 mm(U/L) 2.0 mm(R/B)	1920 x 1080	700nit	11%	24/7	DVI-D, Display Port 1.2, 2 HDMI, Stereo mini Jack(in/out), DP1.2(Loop-out), RS232C(in/out), RJ45, Detachable type external sensor (IR)

## Interactive display

Project	Screen Size	Resolution	Brightness	Touch Type	Touch	Connectivity	Operating System	S/W	Remark
Flip	55"	3840 x 2160(Landscape) 2160 x 3840(Portrait)	300 nit	Inglass touch	4 drawing, Passive Pen	HDMI1, Touch Out 1, USB 2	Tizen 3.0	Flip S/W	Moving Stand with advanced Pivot
PMF-BC	32" 43" 55"	1920 x 1080	300 nit (32") 350 nit (43") 400 nit (55")	Capacitive touch	10 touch	In : DVI-I(1), DP1.2(1), HDMI 2.0(2), USB 2.0(2), RS232C, RJ45 Out : DP1.2(1), RS232C	Tizen 3.0	Built-in MagicInfo S4, SSSP 4.0	Center IR, Glare-Free Visual Quality, IP5x certification



## Standalone signage

	Project	Screen Size	Resolution	Brightness	Haze	Operation Hour	Connectivity	Operating System	S/W	IP5x Certification
UHD	QMN	43", 49", 55", 65", 75"	3840 x 2160	500 nit	Non-Glare	24/7	In : DVI-D(1), DP1.2(1), HDMI 2.0(2), USB 2.0(2), RS232C, RJ45 Out : HDMI 2.0(1), RS232C	Tizen 4.0	Built-in MagicInfo S6, SSSP 6.0	O
	QMH	49", 55", 65"	3840 x 2160	500 nit	Non-Glare	24/7	In : DVI-D(1), DP1.2(1), HDMI 2.0(2), USB 2.0(2), RS232C, RJ45 Out : HDMI 2.0(1), RS232C	Tizen 3.0	Built-in MagicInfo S5, SSSP 5.0	O
	QMF	75", 85", 98"	3840 x 2160	500 nit	Non-Glare	24/7	In : DVI-I(1), DP1.2(2), HDMI 1.4(4), USB 2.0(2), RS232C, RJ45 Out : RS232C	Non-SoC	-	X
FHD	PHF	43", 49", 55"	1920 x 1080	700 nit	Non-Glare	24/7	In : DVI-I(1), DP1.2(1), HDMI 2.0(2), USB 2.0(2), RS232C, RJ45 Out : DP1.2(1), RS232C	Tizen 2.4	Built-in MagicInfo S4, SSSP 4.0	O
	PMH	43", 49", 55"	1920 x 1080	500 nit	Non-Glare	24/7	In : DVI-I(1), DP1.2(1), HDMI 2.0(2), USB 2.0(2), RS232C, RJ45 Out : DP1.2(1), RS232C	Tizen 2.4	Built-in MagicInfo S4, SSSP 4.0	O

## Monitor

	Screen Size	Flat/Curved	Resolution	Brightness	Viewing angle	Connectivity	USB-C	Eye Saver Mode
CJ89	49", 43"	Curved	3840x1080(49") 3840x1200(43")	300cd/m2	178°(H)/178°(V)	HDMI, DP, USB Hub	Yes(2EA)	Yes
CHG90	49"	Curved	3840x1080	350cd/m2	178°(H)/178°(V)	HDMI 2, DP, mDP, USB Hub	N/A	Yes
CH89	34"	Curved	3440x1440	300cd/m2	178°(H)/178°(V)	HDMI, DP, USB Hub	Yes	Yes
UH85	32"	Flat	3840x2160	250cd/m2	178°(H)/178°(V)	HDMI 2, DP, mDP, USB Hub	N/A	Yes
SH85	27", 23.8"	Flat	2560x1440	350cd/m2(27") 300cd/m2(23.8")	178°(H)/178°(V)	HDMI, DP, USB Hub	Yes	Yes

## MagicINFO solution

	Number of displays connecting to MagicINFO Server			
	<200	<2000	<5000	>5000
OS	Windows Server® 2008 / 2012 / 2016			
CPU	Intel Xeon E3-1200 or better	Intel Xeon E5-2400 or better	Intel Xeon E5-2600 or better	Intel Xeon E5-4600 or better
RAM	4 GB or more	8 GB or more	16 GB or more	32 GB or more
HDD	At least 100 GB for basic setup (operating system and server application) *Heavily dependent on the amount of content data to be stored on the server			
Network Bandwidth	64 kbps or better			
Number of Servers	1	2	3	3 or more; dependent on scenario

## About Samsung

Samsung inspires the world and shapes the future with transformative ideas and technologies. The company is redefining the worlds of TVs, smartphones, wearable devices, tablets, digital appliances, network systems, and memory, system LSI, foundry and LED solutions. For the latest news, please visit the Samsung Newsroom at <http://news.samsung.com>.

## For more information

For more information about Samsung Interactive Display, SMART LED Signage, SMART Signage, and Business Monitor, visit [www.samsung.com/business](http://www.samsung.com/business) or [www.samsung.com/displaysolutions](http://www.samsung.com/displaysolutions)

Copyright © 2018 Samsung Electronics Co. Ltd. All rights reserved. Samsung is a registered trademark of Samsung Electronics Co. Ltd. Specifications and designs are subject to change without notice. Non-metric weights and measurements are approximate. All data were deemed correct at time of creation. Samsung is not liable for errors or omissions. All brand, product, service names and logos are trademarks and/or registered trademarks of their respective owners and are hereby recognized and acknowledged.

Samsung Electronics Co., Ltd.  
416, Maetan 3-dong, Yeongtong-gu, Suwon-si, Gyeonggi-do 443-772, Korea  
2018-08  
[www.samsung.com](http://www.samsung.com)

**SAMSUNG**