

# Customer Tips

dc06cc0382  
May 19, 2006

*... for the user*

## *Mac OS X Version 10.2.x PPD/Plugin Installation and Print Center Setup*

### Purpose

This document describes printing in an environment with Apple OS X 10.2.x and a Xerox Document Centre or WorkCentre device. The audience for this document is users experienced with a Macintosh operating system.

This document describes how to install the PPD and printer setup in a Mac OS X Version 10.2.x environment. It also covers printing using the AppleTalk and IP protocols. Examples in this document use a WorkCentre Pro 40 Color device.

**Note:** The WorkCentre Pro 232/238/245/255/265/275 does not support OS X Version 10.2.x. The WorkCentre M35/M45/M55 and the WorkCentre M165/M175 can support the procedures described in this document if they are equipped with the PostScript interpreter option.

This document applies to these **Xerox** products:

	WC Pro 232/238/245/255/265/275
	WC 232/238/245/255/265/275
x	WC Pro C2128/C2636/C3545
x	WC Pro 165/175
	WC M165/M175
x	WC Pro 32/40 Color
x	WC Pro 65/75/90
x	WC Pro 35/45/55
	WC M35/M45/M55
x	DC 555/545/535
x	DC 490/480/470/460
x	DC 440/432/425/420

### Prerequisites

- Mac OS X version 10.2 client installed.
- AppleTalk or TCP/IP configured on the Xerox device. See the documentation included with your device for procedures to enable these protocols.
- Completely shut down the Print Center before you install the PPD/plugin to ensure a complete installation.

### Installing the PPD

**Note:** Examples in this document use a WorkCentre Pro 40 Color device.

1. Download the most current PPD (for example: **SPWCP40\_OSX\_v1.4.12**) for your device from the Xerox Web site. At the top of the page at [www.xerox.com](http://www.xerox.com), select **Support & Drivers**. When the PPD is on the desktop, it automatically uninstalls to a folder (for example **SPWC40\_OSX\_v1.4.12**).

- Open the disk image (xx.dmg) file to view items similar to the following. Double click the PPD package (for example, **WCP40 Color.pkg**) to begin the installation.



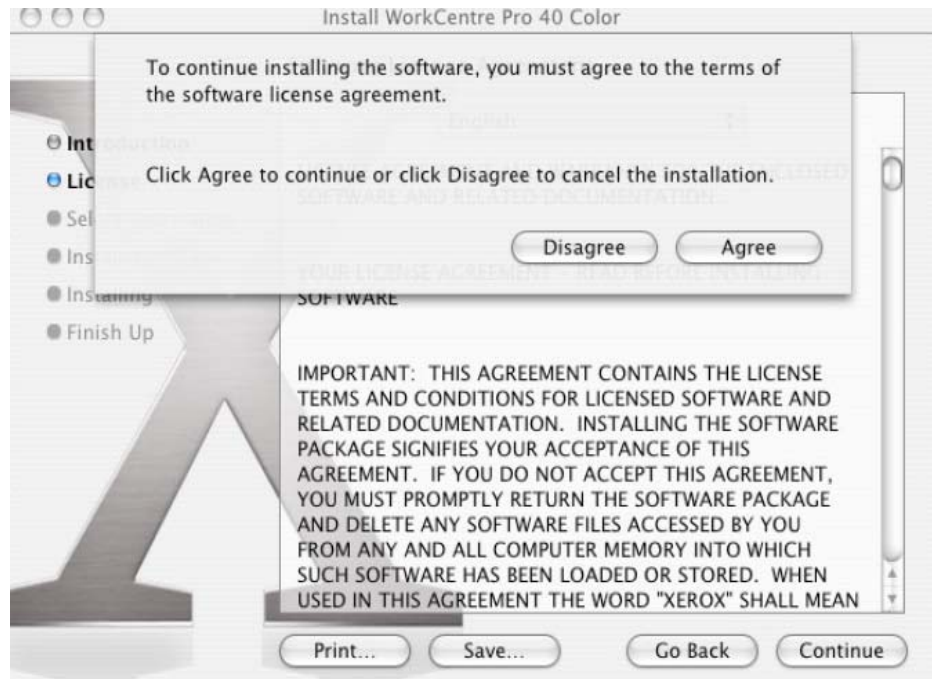
- Click **Continue**.



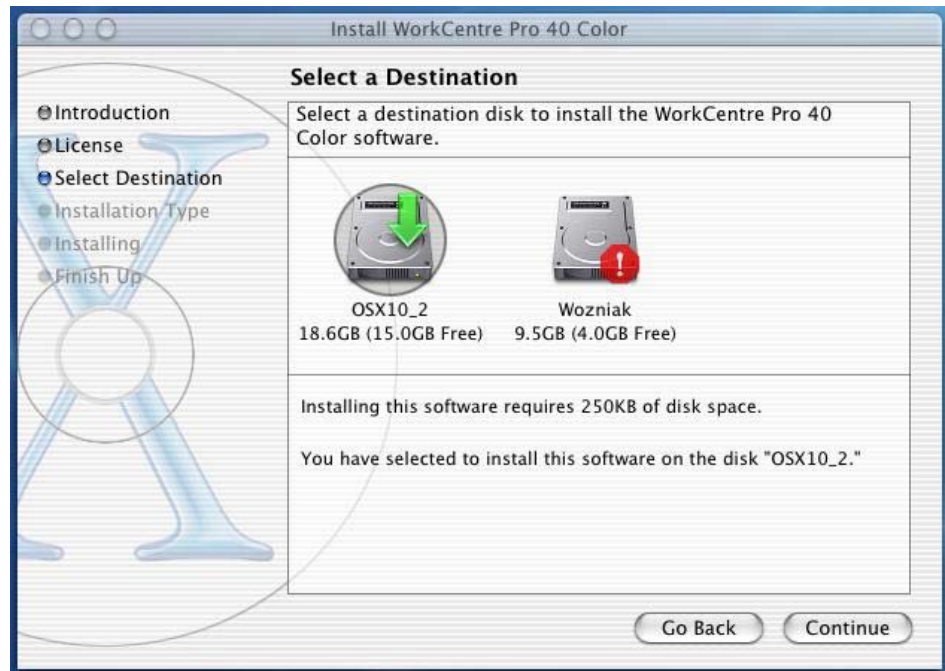
- Read the Software License Agreement. Click **Continue**.



5. If you agree to the terms of the Software License Agreement, click **Agree**.

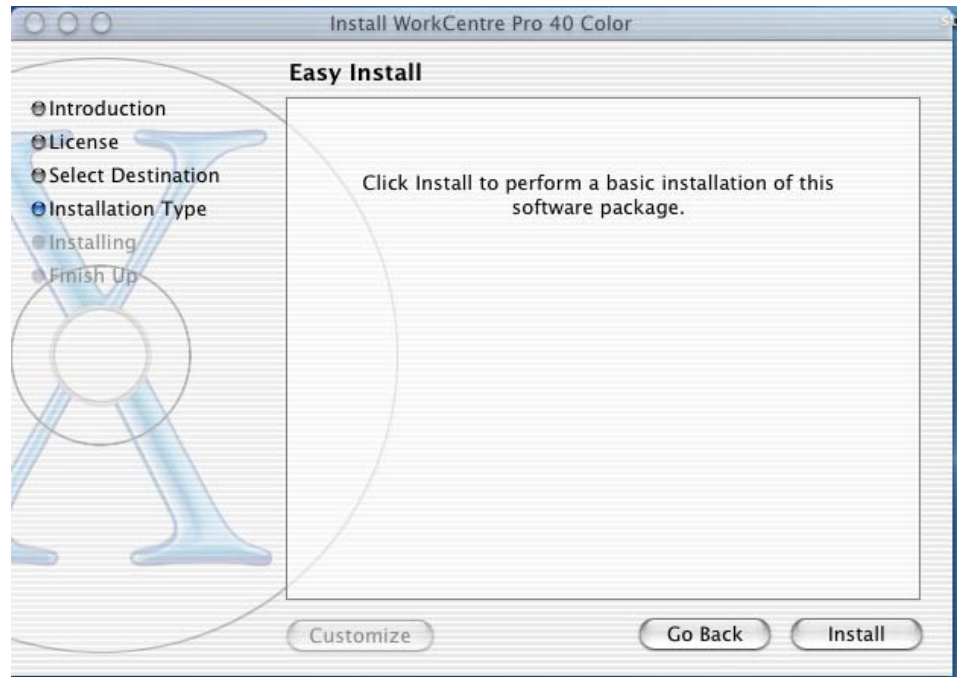


6. Select a destination disk. Click **Continue**.



7. Click **Install**.

**Note:** If you have previously installed a PPD package, the screen and button are named **Upgrade**. For each device, the Print Center does not allow you to install a PPD older than one it already contains.



8. When the install/upgrade is complete, click **Close**.



# Installing the Plugins Package

1. Double click **WCP\_Plugins.pkg**.



2. Enter a **Name and Password** that has administrative rights to the Macintosh. Click **OK**.



3. Click **Continue**.



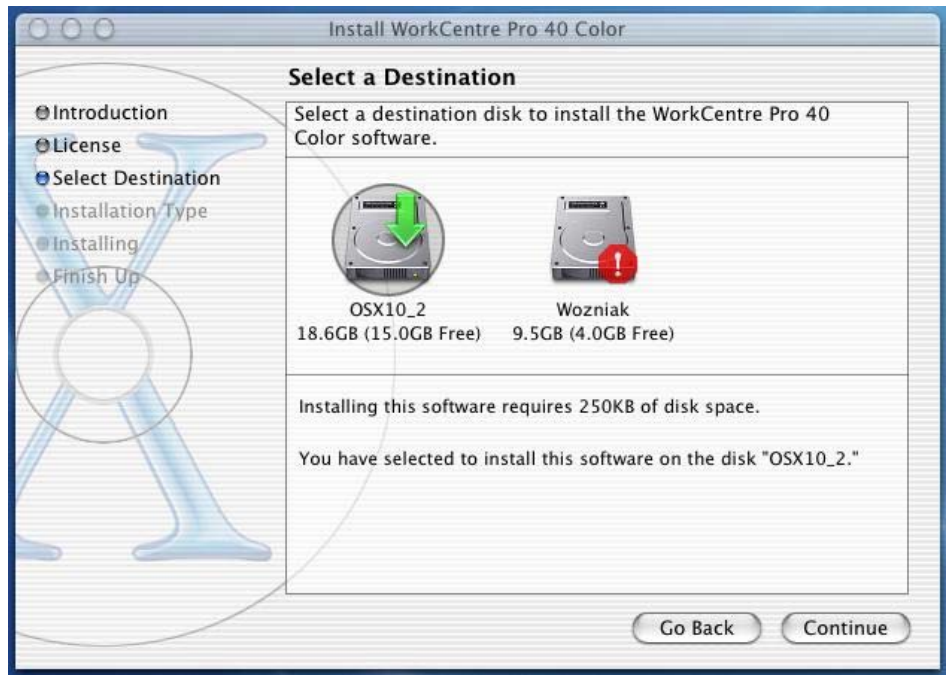
4. Read the Software License Agreement. Click **Continue**.



5. If you agree to the terms of the Software License Agreement, click **Agree**.

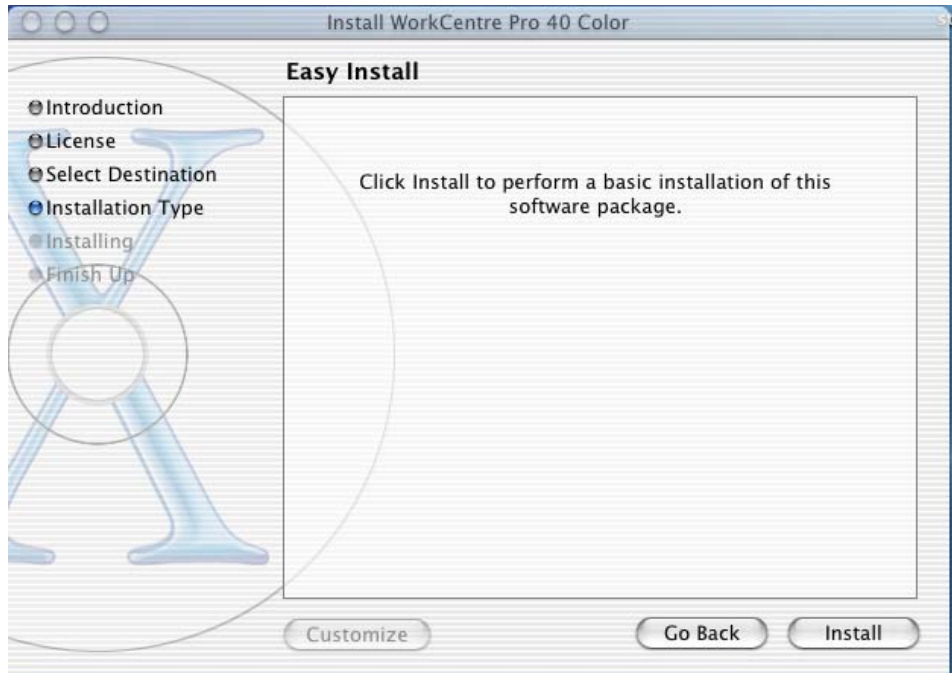


6. Select a **Destination** disk. Click **Continue**.



7. Select **Install**.

**Note:** If you have previously installed a Plugin package, the screen and button are named **Upgrade**. For each device, the Print Center does not allow you to install a Plugin package older than one it already contains.



8. Select **Close**.



**Note:** After the Color.pkg and WCP\_Plugins.pkg expand, the files automatically load into the correct folders. PPD's are located on the hard drive in the following location: **Library> Printers> PPD> Content> Resources>en.lproj**. The Plugins (that provide, for example, accounting, booklet, watermark and job type) are located on the hard drive in the following location: **Library> Printers> PPD\_Plugins**.

## Configuring Macintosh Printers

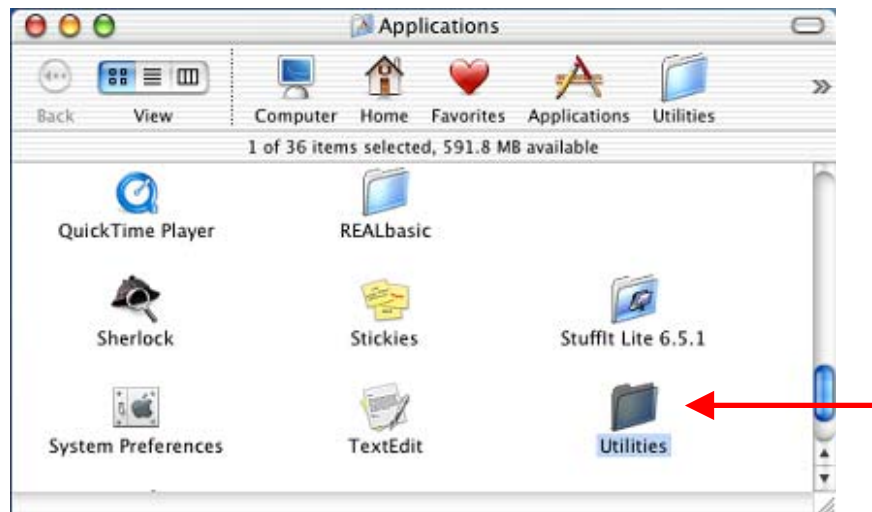
### Open the Print Center

1. Select **Go** on the toolbar menu and select **Applications**.





2. In the Applications folder, open the **Utilities** folder.



3. In the Utilities folder, open the **Print Center** utility.



4. The first time the Print Center is opened, a message appears: **You have no printers available. Would you like to add a printer to your list of printers now?** Click **Add** in the message screen. If you already have printers installed, select **Add** on the tool bar.



**Note:** Mac OS 10.2.x has a number of transports available for printing. This document only discusses AppleTalk and IP printing.

5. To set up IP printing, continue with the process in the next section "IP Printing." To set up AppleTalk printing, skip to the section "Setting Up AppleTalk Printing," later in this document.

## IP Printing

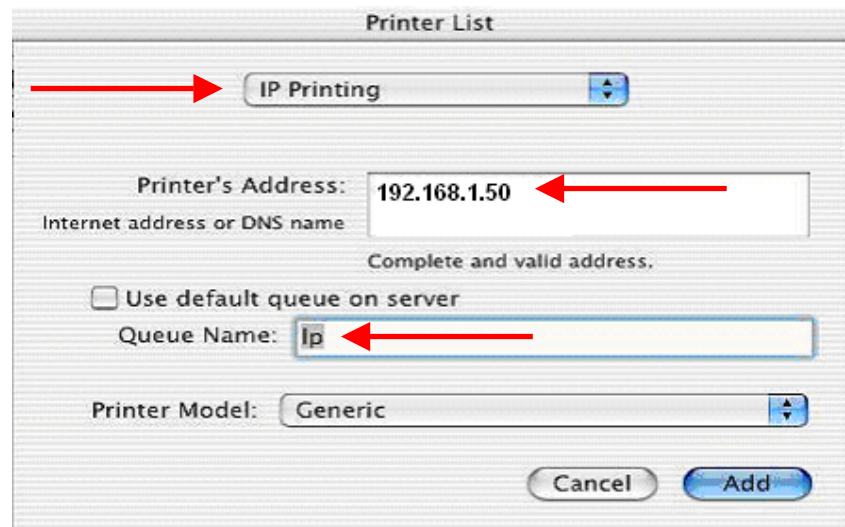
When you setup any multifunction device with this configuration, printing may have a limited feature set. That is, you can only select basic features such as number of copies, duplex, stapling, paper tray selections, and type of paper. PPD features that you are able to configure in the OS 9.x Chooser are not available in the OS X 10.2.x Print Center software. Such features as fax, secure print, and sample print are not available using the OS X PPD.

IP printing allows you to select the appropriate generic PPD for your multifunction device. If necessary, copy the PPD to this directory  
/Library/Printers/PPDs/Contents/Resources/<language code>.lproj on the workstation running OS X 10.2.x.

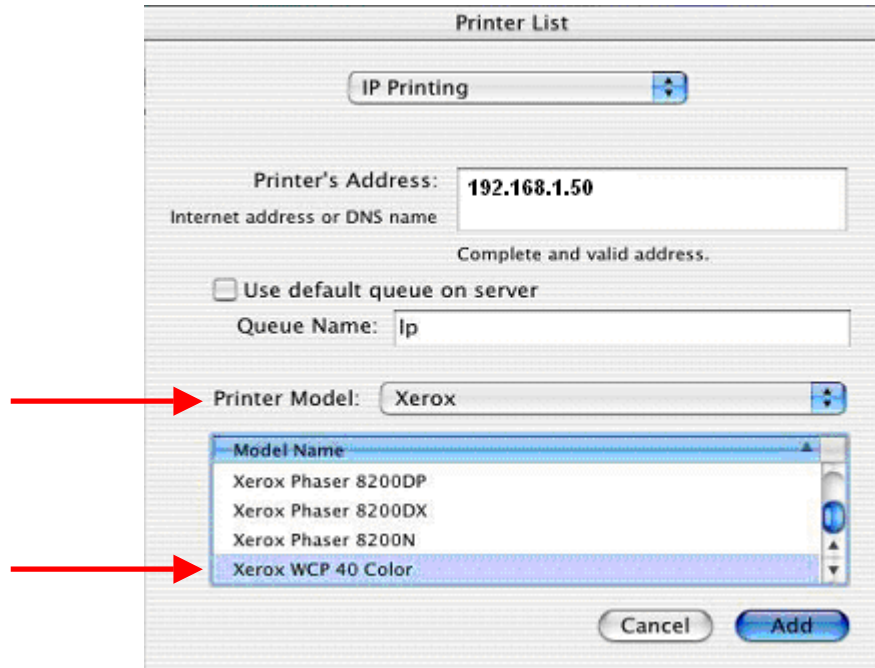
Use the following procedure to set up IP printing.

1. When you click Add in the Print Center, the new printer screen appears. Select **IP Printing** and enter the **IP address** of the Xerox device in **Printer's Address**. Uncheck the **Use default queue on server** box. Enter lower case **lp** for **Queue Name**.

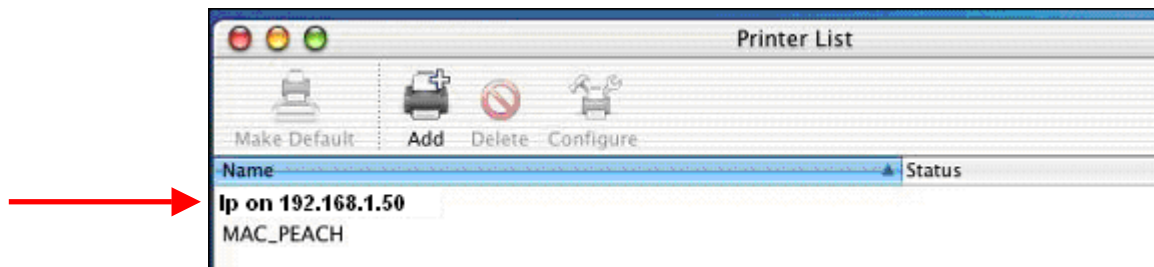
**Note:** The queue name, lp, is case sensitive.



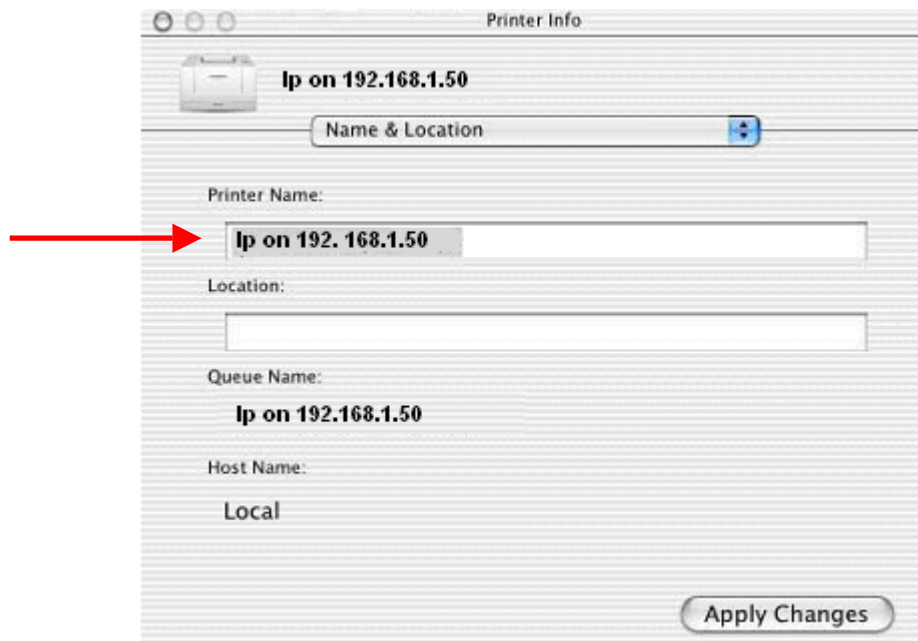
2. On the **Printer Model** dropdown menu select **Xerox**. Scroll down in **Model Name** and choose the **PPD** for your Xerox device. Highlight the PPD and select **Add**.



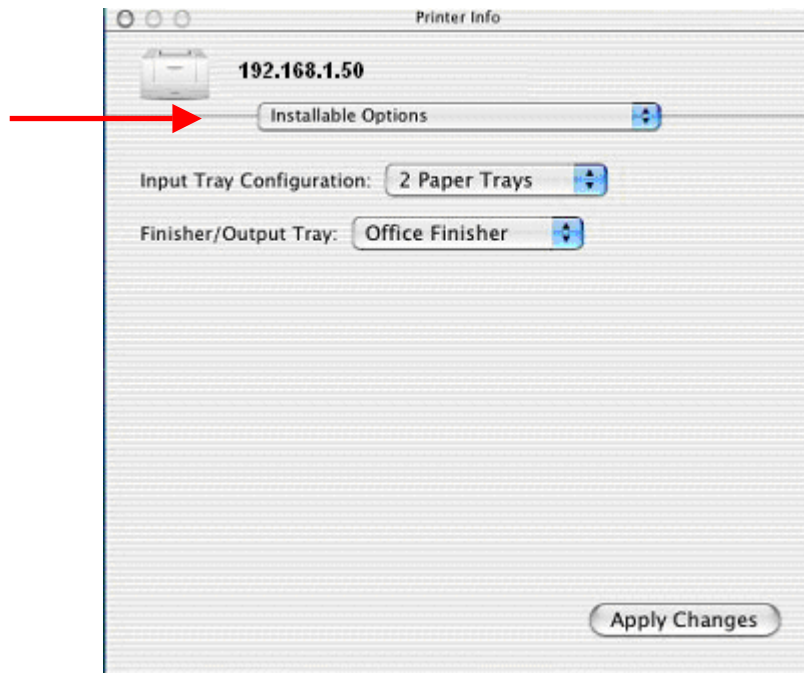
3. The device you set up as an IP printer appears in the Printer List with the queue name followed by the IP address. Highlight the device in the Printer List.



4. On the Macintosh menu select **Printers** then **Show Info** to display the Printer Info screen. With **Name & Location** displayed, you can change the **Printer Name** and add an entry in the **Location** field (optional).

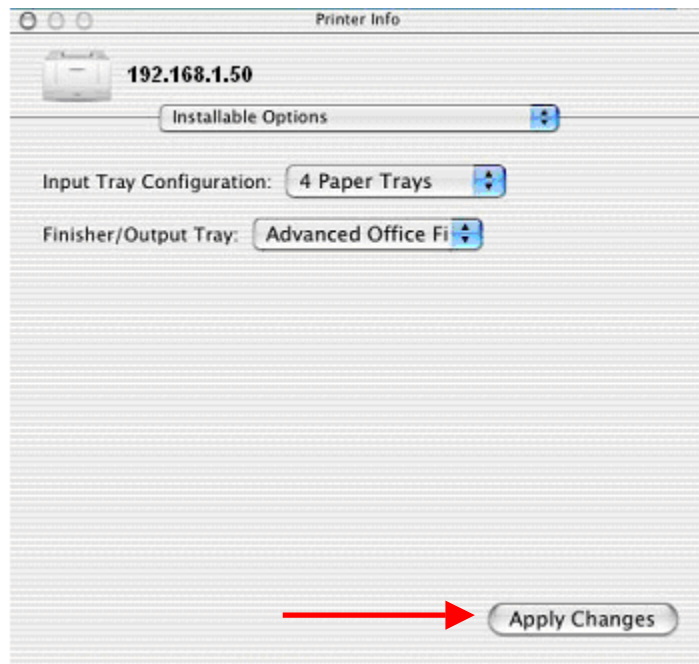


5. In the dropdown menu under **Name & Location** select **Installable Options**. The PPD defaults populate the fields.



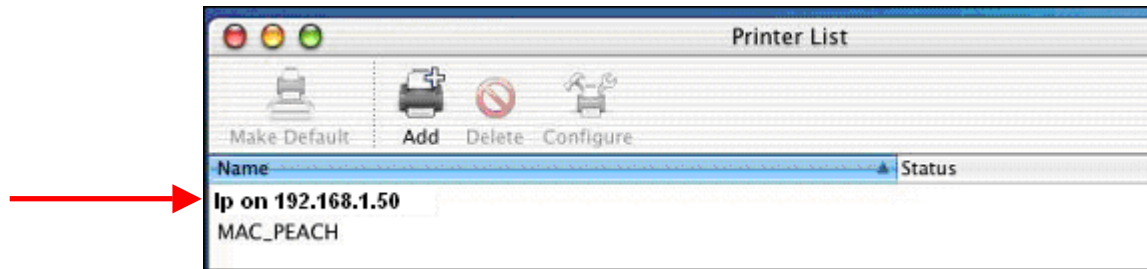
6. If required, make changes to the **Installable Options** and click **Apply Changes**. Close the window.

**Note:** Only enable the envelope tray at the time you intend to use it. You may find that other tray choices are unavailable when you print from an application if the envelope tray is selected here.



- After closing the Printer Information window, the Printer List screen appears, and printing using the new device is available.

**Note:** The default printer is listed in bold print. The last printer added is automatically the default. You can change the default if required.



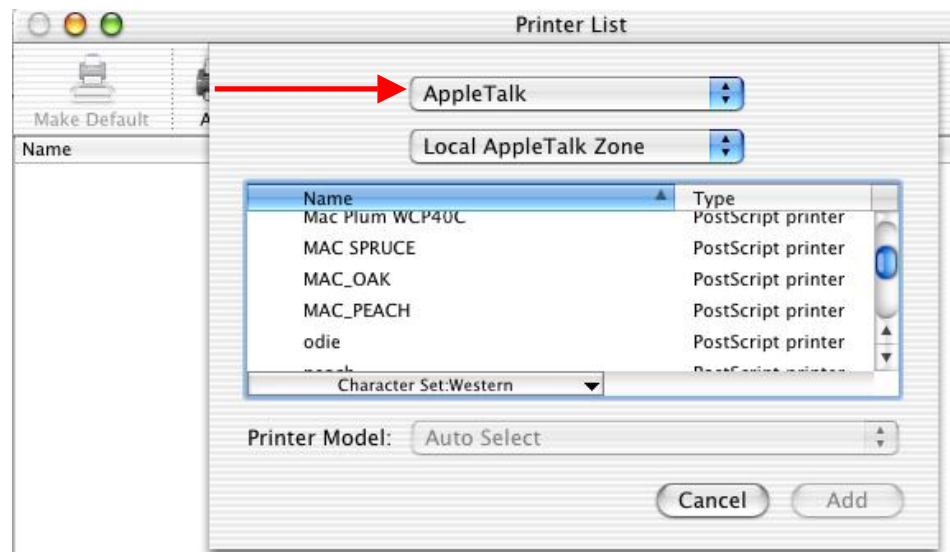
## AppleTalk Printing

Auto Setup is available for some devices. It initiates in the following process after you select the AppleTalk printer. The following information applies to printing using AppleTalk in OS X 10.2.x and Auto Setup:

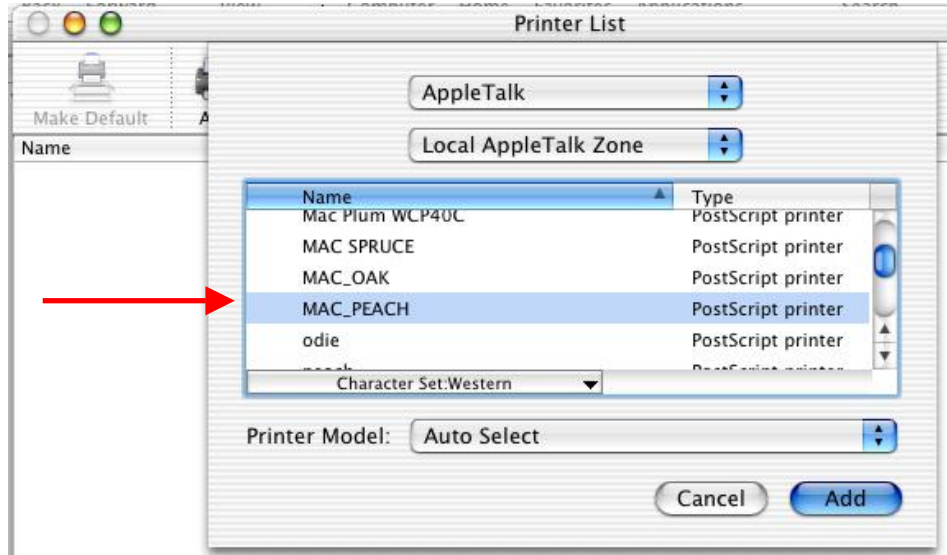
- DC 440/432/425/420 with ESS versions later than 3.2.6s and DC 490/480/470/460 with ESS versions later than 19.05.026 support Auto Setup.  
OS X 10.2.x tries to query the printer to find out what PPD to use. The ESS versions prior to the ones mentioned above for the 4xx family do not support this query. The query fails and generates a -9621 error. As a workaround, you can select the PPD for AppleTalk manually.
- All versions of the DC 555/545/535 support printing using AppleTalk in OS X 10.2.x, but do not support Auto Setup of the PPD. The Print Center generates a message that it cannot find the correct PPD and you must manually select the correct PPD.

Use the following procedure to set up AppleTalk printing.

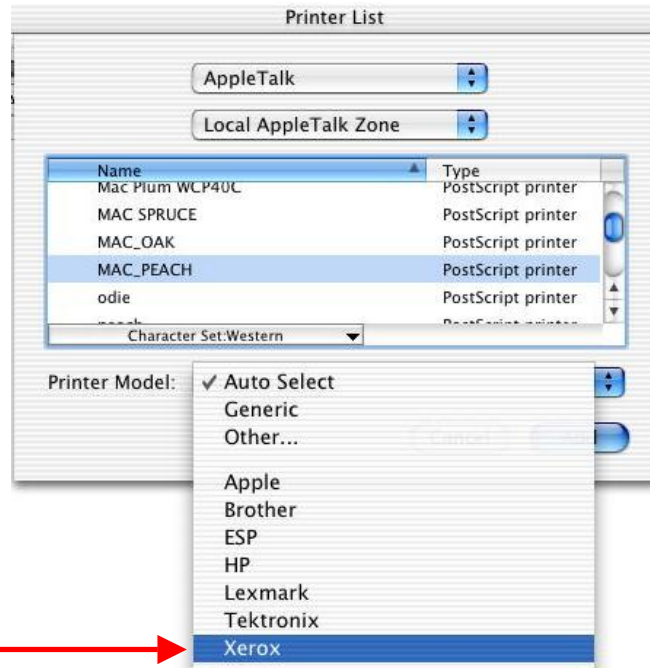
- When you click **Add** in the Print Center, the new printer screen appears. In the top drop down menu, select **AppleTalk** as the transport. Select the AppleTalk zone where the printer resides if necessary.



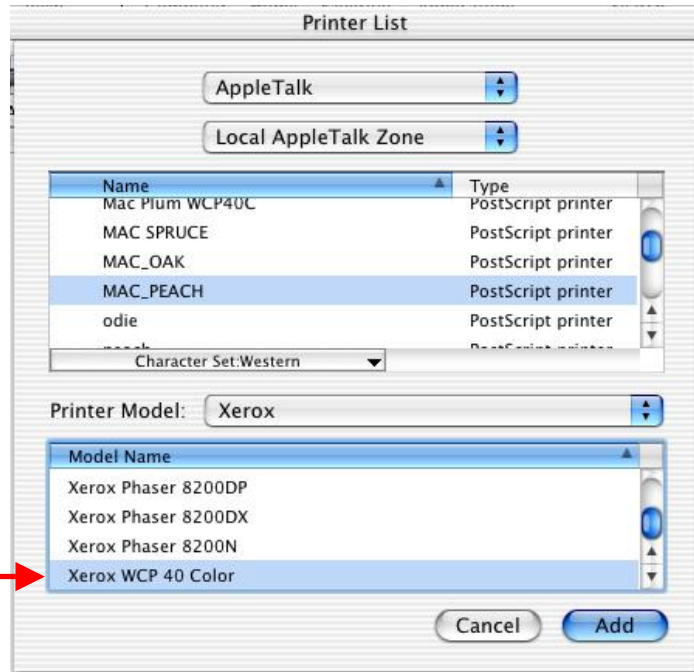
2. Highlight the device's AppleTalk name you entered when you set up AppleTalk on the device. In this example the AppleTalk name of the printer is Mac\_Peach.



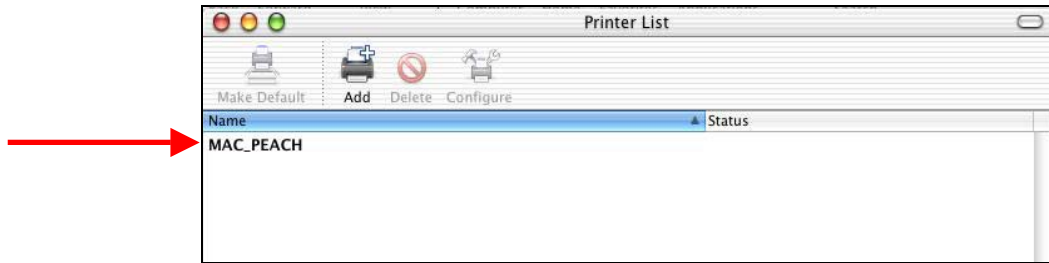
3. Select the **Printer Model** drop down menu, and select **Xerox**.



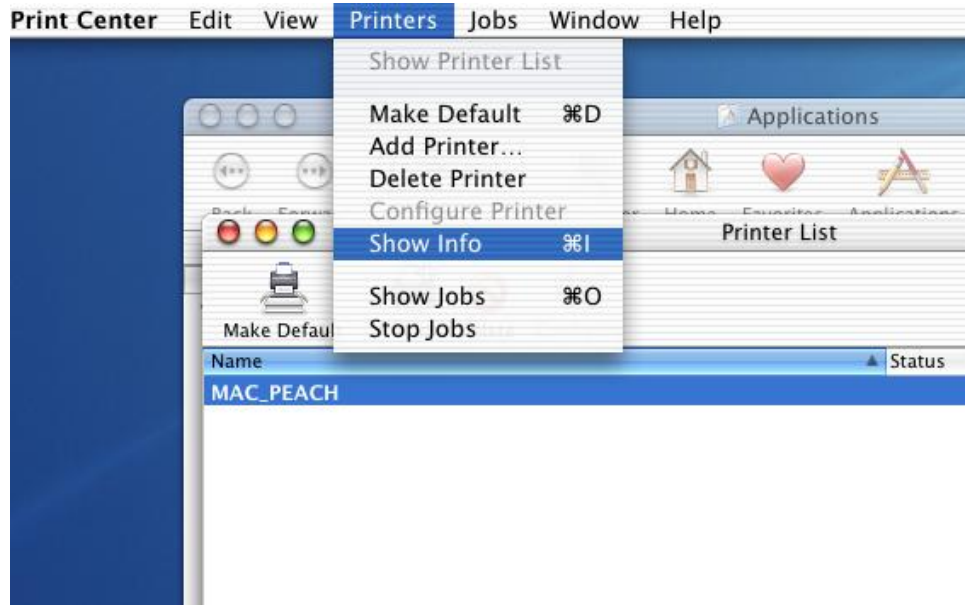
4. Select the **Printer Model name** drop down and highlight the PPD for your device. Press **Add**.



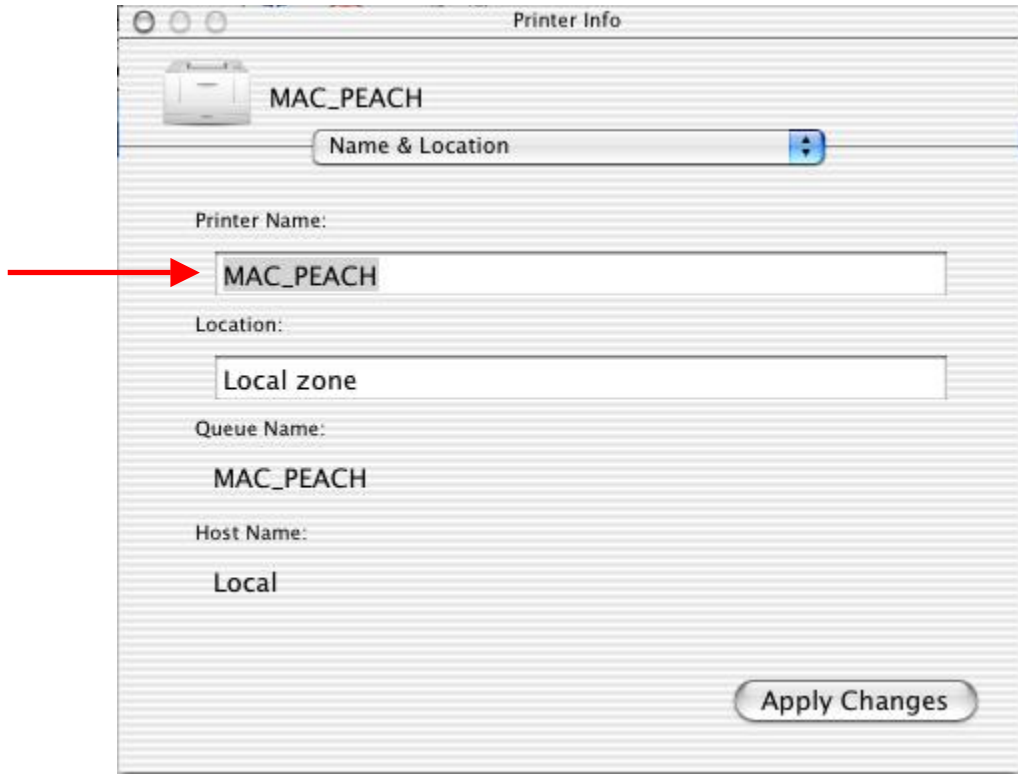
5. The device using AppleTalk appears in the Printer List.



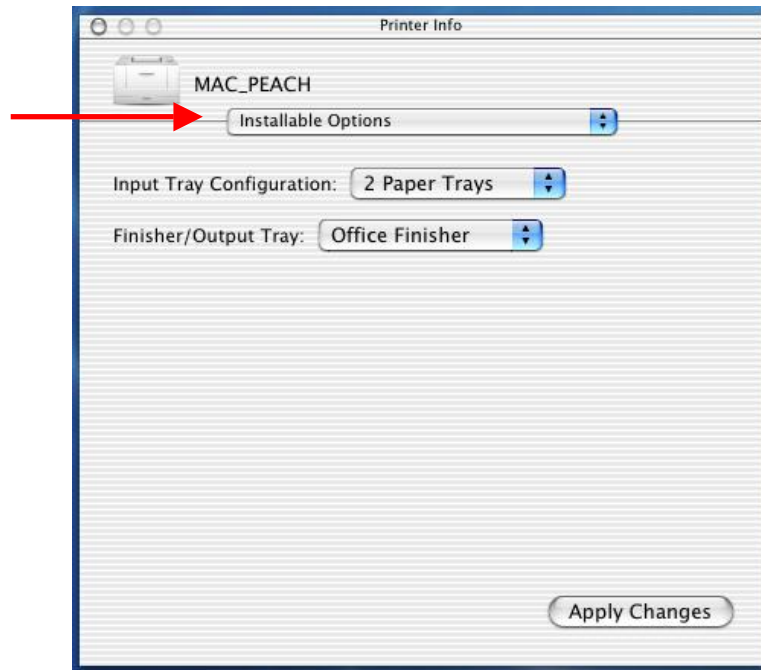
6. Highlight the device in the Printer List. Select **Printers** from the toolbar. From the drop down, choose **Show Info**.



7. On the Printer Info screen, with **Name & Location** displayed, you can change the **Printer Name** and add an entry in the **Location** field (optional).



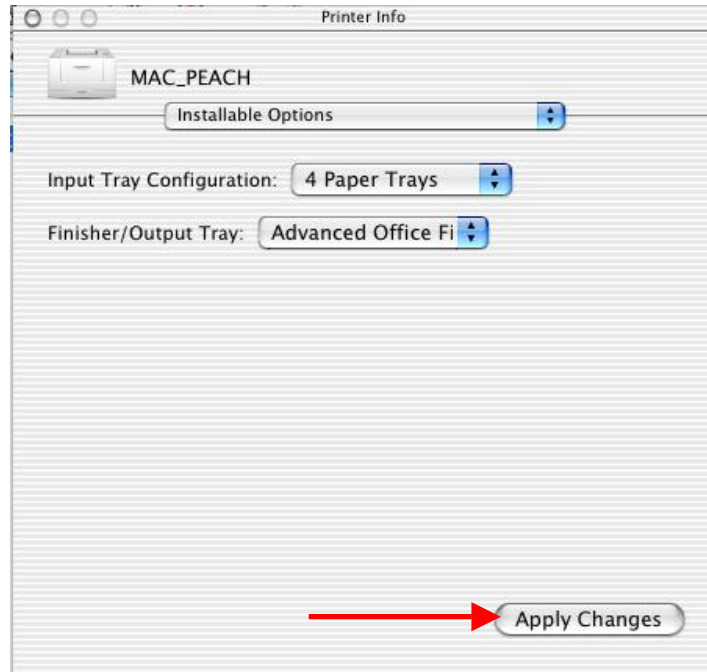
8. Select **Installable Options** from the Printer Model dropdown menu. The PPD defaults populate the fields.



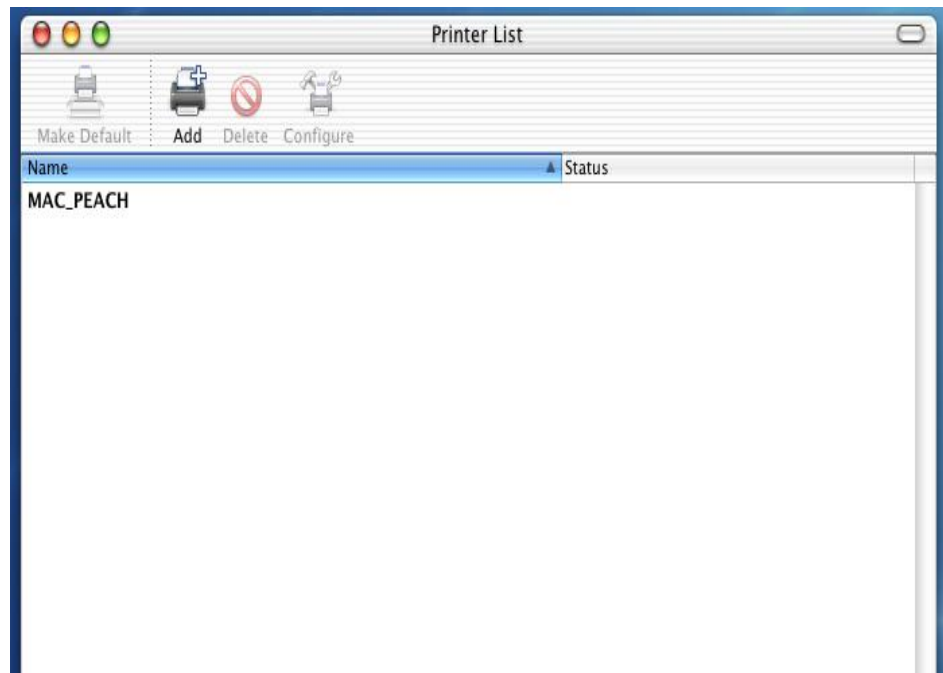


9. If required, make changes to the **Installable Options** and click **Apply Changes**. Close the window.

**Note:** Only enable the envelope tray at the time you intend to use it. You may find that other tray choices are unavailable when you print from an application if the envelope tray is selected here.



10. The Printer Information screen appears showing the Printer List. You are now able to print. Close **Applications** and all other open windows.



## Additional Information

This Customer Tip provided by Xerox Digital Network Solutions Center.

Xerox Customer Support welcomes feedback on all documentation - send feedback via e-mail to: [USA.DSSC.Doc.Feedback@mc.usa.xerox.com](mailto:USA.DSSC.Doc.Feedback@mc.usa.xerox.com).

You can reach Xerox Customer Support at 1-800-821-2797 (USA), TTY 1-800-855-2880 or at <http://www.xerox.com>.

Other Tips about Xerox multifunction devices are available at the following URL: <http://www.office.xerox.com/support/dctips/dctips.html>.

XEROX®, The Document Company®, the digital X®, and all Xerox product names are trademarks of XEROX CORPORATION. Other trademarks belong to their respective owners.

Copyright © XEROX CORPORATION 2006. All Rights Reserved.

The XEROX logo is displayed in a bold, red, sans-serif font. The word "XEROX" is followed by a registered trademark symbol (®).