

# Customer Tips

dc06cc0384  
September 6, 2006

*... for the user*

## *Mac OS X Version 10.4.x PPD/Plugin Installation and Printer Setup*

### Purpose

This document describes printing in an environment with Apple OS X 10.4.x and a Xerox Document Centre or WorkCentre device. The audience for this document is users experienced with a Macintosh operating system.

This document contains the processes to install the PPD, add the plugin and add a printer. It also covers how to add printers in a Mac OS X Version 10.4.x environment using either the AppleTalk or IP protocols. Examples in this document use a Workcentre Pro 40 Color device.

This document applies to the **Xerox** products indicated in the table below. For some products, it is assumed that your device is equipped with the appropriate option to support this document.

X	WC 7655/7665
x	WC Pro 232/238/245/255/265/275
x	WC 232/238/245/255/265/275
x	WC Pro C2128/C2636/ C3545
x	WC Pro 165/175
x*	WC M165/M175
x	WC Pro 32/40 Color
x	WC Pro 65/75/90
x	WC Pro 35/45/55
x*	WC M35/M45/M55
x	DC 555/545/535
x	DC 490/480/470/460
x	DC 440/432/425/420

\*See "Prerequisites"

### Prerequisites

- Mac OS X version 10.4.x installed.
- AppleTalk or TCP/IP configured on the Xerox device and the Macintosh. See the documentation included with your device for procedures to enable these protocols.
- Entirely shut down the Print Setup Utility before you install the PPD and plugins to ensure a complete installation.
- Some Xerox devices do not have a PostScript interpreter in a standard model for example, the WorkCentre M35/M45/M55 and WorkCentre M165/M175. To support the procedures described in this document, these devices must have the PostScript interpreter option installed.

### Installing the PPD

**Note:** Examples in this document use a WorkCentre Pro 40 Color device.

1. Download the most current PPD (for example: **SPWCP40\_OSX\_v1.4.12**) for your device from the Xerox Web site. At the top of the page at [www.xerox.com](http://www.xerox.com), select **Support & Drivers**. Make selections based on your device type to access the PPD. When the PPD is on the desktop, it automatically uninstalls to a folder (for example, **SPWC40\_OSX\_v1**).

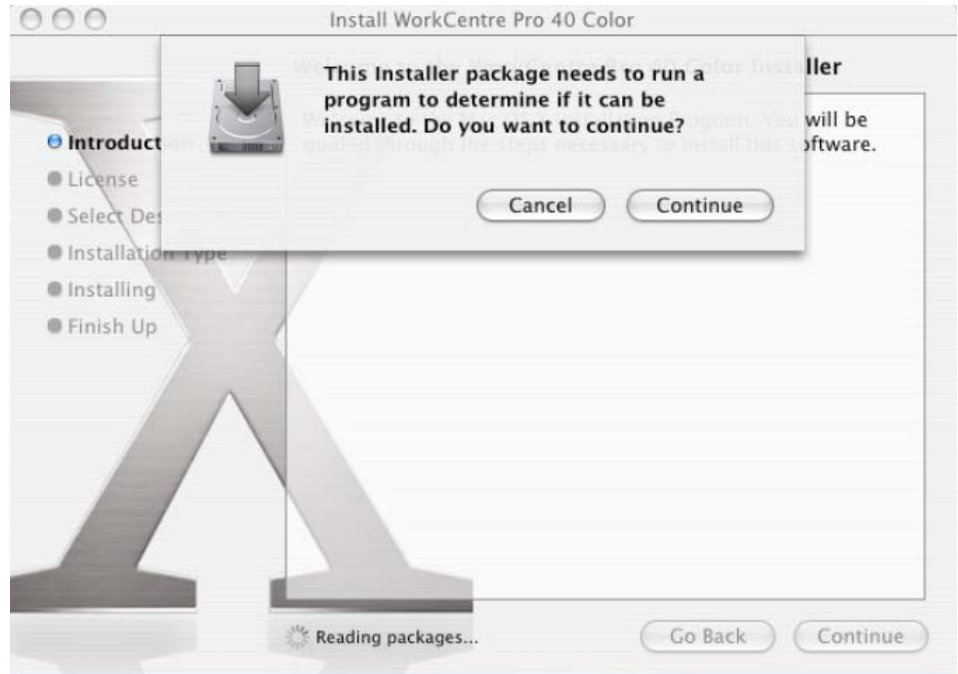
**Note:** If the file does not automatically unstuff, double click the file.

2. Open the disk image (**xx.dmg**) file to view items similar to the following. Double click the PPD package (for example, **WCP40 Color.pkg**) to begin the installation.



**Note:** Some devices install the PPD and the plugins at the same time. When this occurs, you do not need to follow the install process in “Installing the Plugins Package,” later in this document.

3. Click **Continue**.



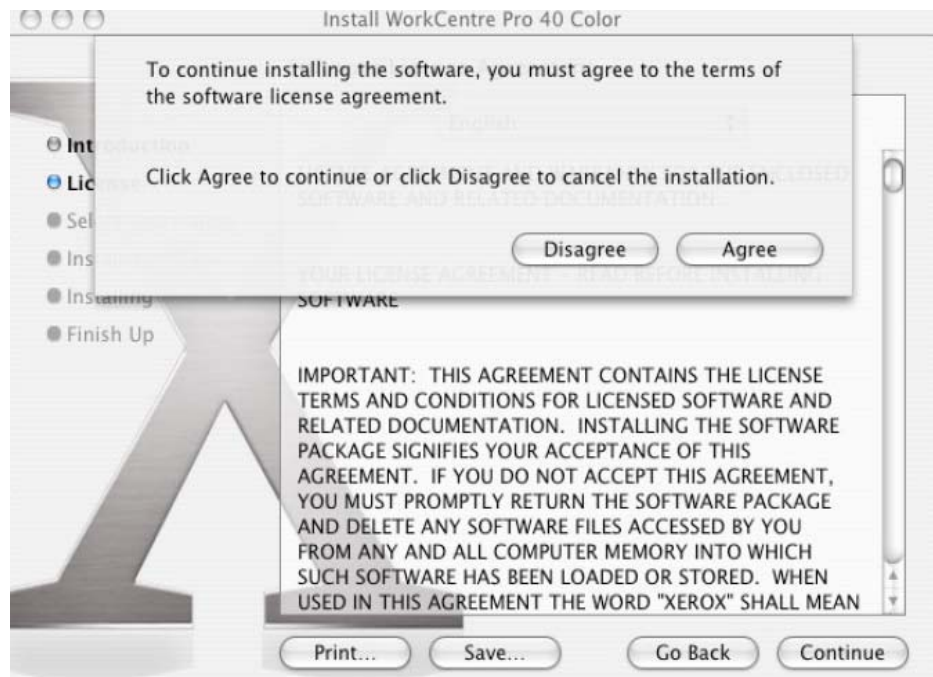
4. Click **Continue**.



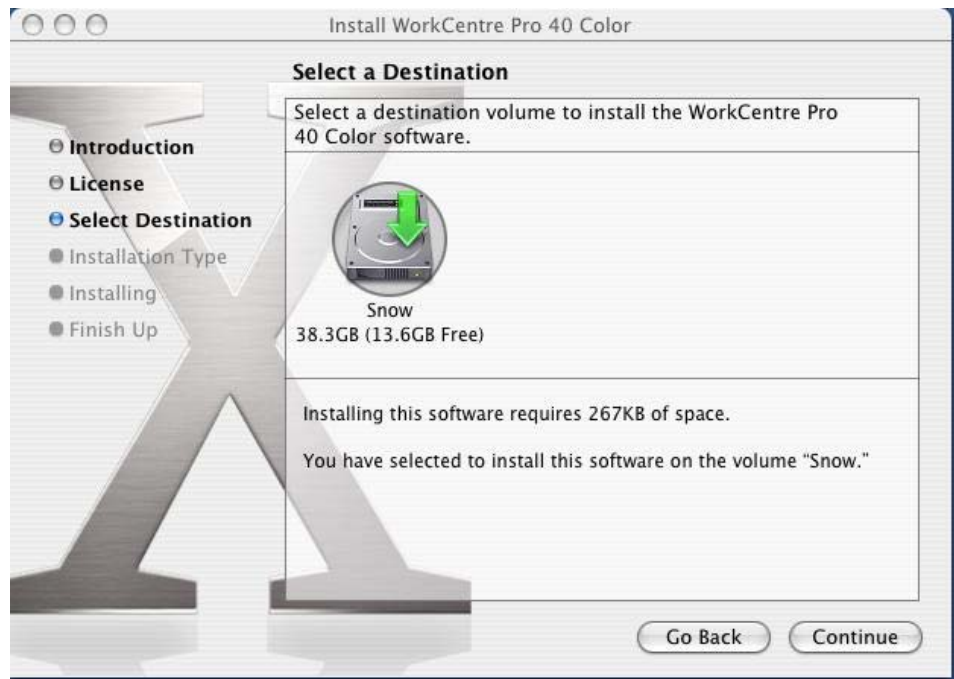
5. Read the Software License Agreement. Click **Continue**.



6. If you agree to the terms of the Software License Agreement, click **Agree**.

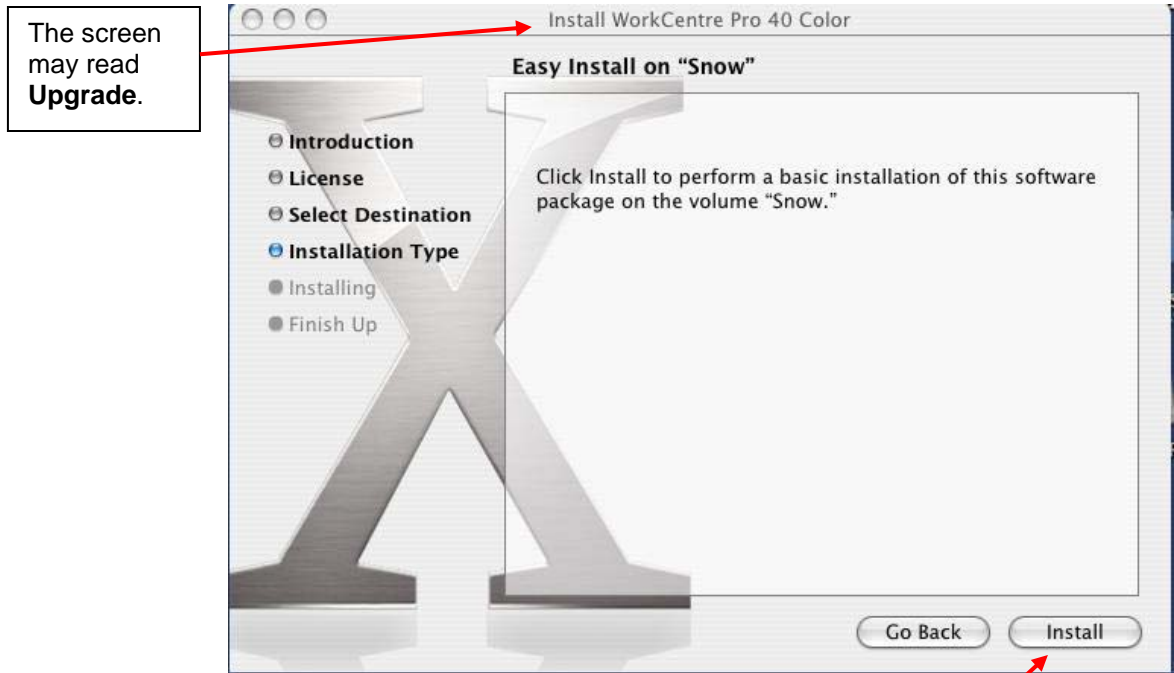


7. Select a **Destination** volume. Click **Continue**.



8. Click **Install**.

**Note:** If you have previously installed a PPD package, the screen and button are named **Upgrade**. For each device, the Printer Setup Utility does not allow you to install a PPD older than one already on the workstation.



- 9.

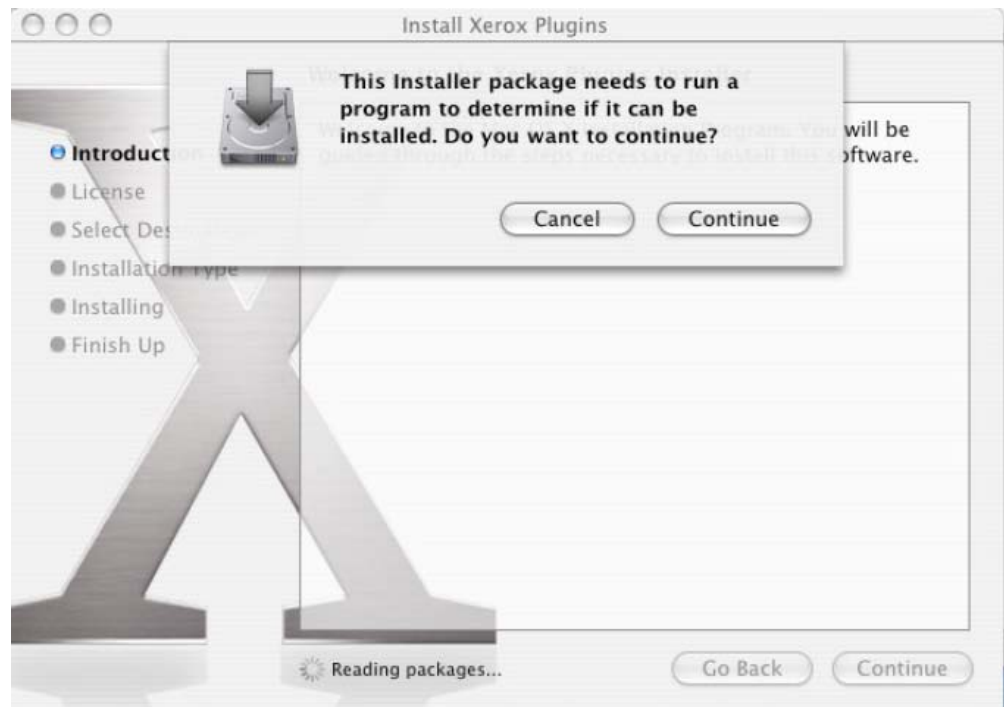
This button may read **Upgrade**.

Click **Close**.

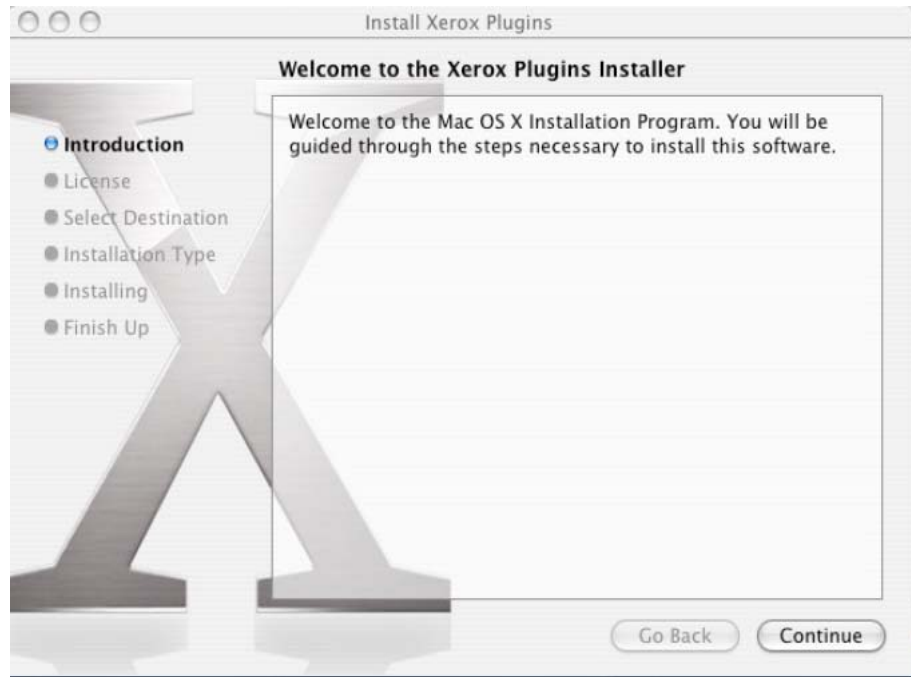


## Installing the Plugins Package

1. Double click the WCP\_Plugins.pkg.
2. Click **Continue**.



3. Select **Continue**.



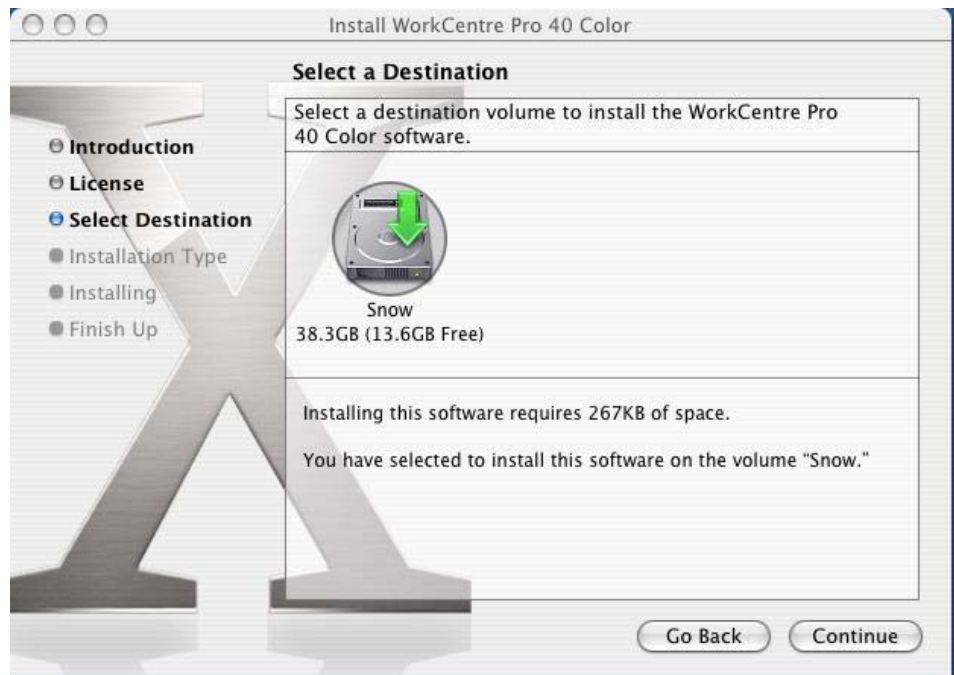
4. Read the Software License Agreement. Click **Continue**.



5. If you agree to the terms of the Software License Agreement, click **Agree**.

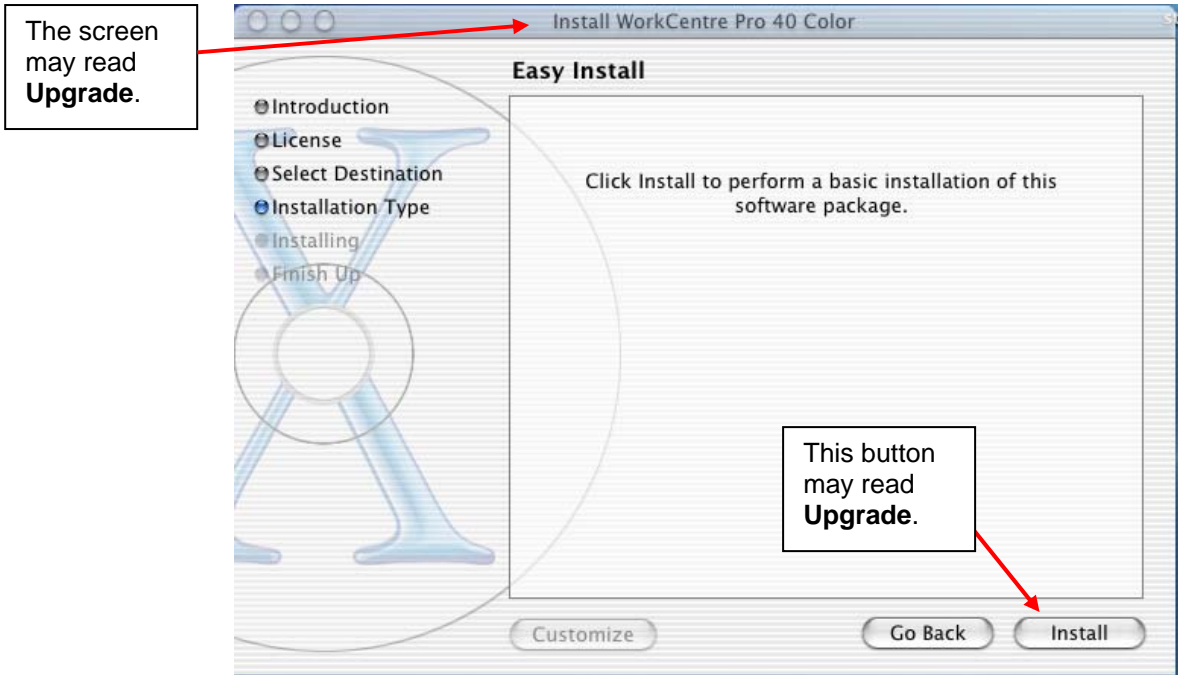


6. Select a **Destination** volume. Click **Continue**.



7. Click **Install**.

**Note:** If you have previously installed a plug-in, the screen and button are named **Upgrade**. For each device, the Printer Setup Utility does not allow you to install a plug-in older than one already on the workstation.



8. Enter a **Name and Password** that has Macintosh administrative rights. Click **OK**.





9. Click **Close**.



10. Completely close all applications and restart the Macintosh.

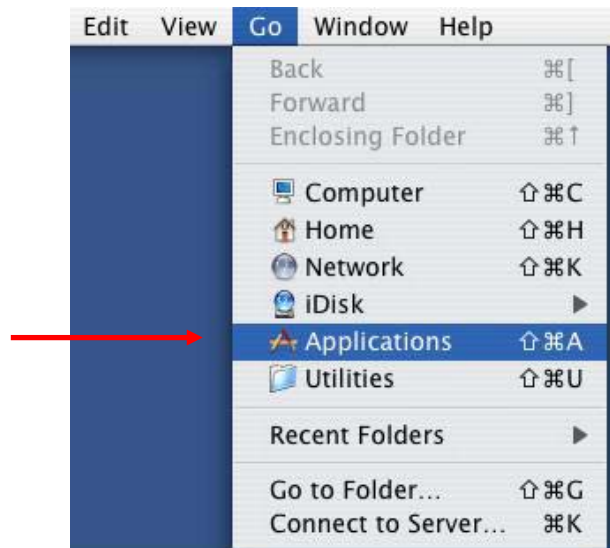
**Note:** For some devices, after the PPD and plugins installers run, the files automatically load into the correct folders. PPD's are located on the hard drive in the following location: **Library> Printers> PPD> Content> Resources> en.lproj**. The plugins (that provide, for example, accounting, booklet, watermark and job type) are located on the hard drive in the following location: **Library> Printers> PPD\_Plugins**.

Other devices (for example the WorkCentre Pro 232/238/245/255/265/275), place the Mac OS X PPDs and plugins in the **Library>Printers>Xerox>PDEs** folder and a new filter file (XeroxPSfilter) is installed in the **Library>Printers>Xerox>filter** folder. PPDs are located in the same directory structure as described in the previous paragraph.

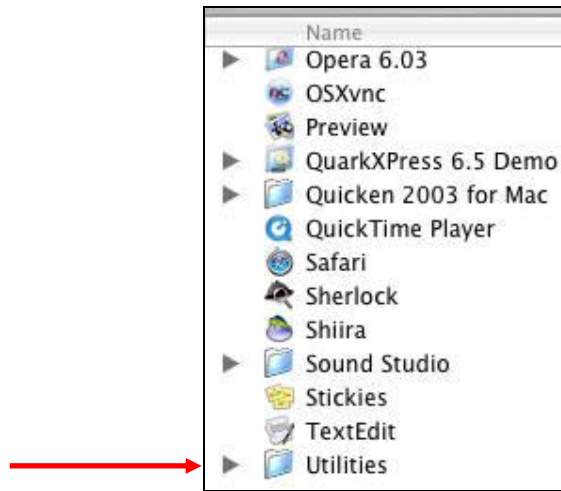
## Configuring Macintosh Printers

### Open the Printer Setup Utility

1. Select **Go** on the toolbar menu then select **Applications**.



2. In the Applications folder, open the **Utilities** folder.



3. In the Utilities folder, open the **Printer Setup Utility**.



4. The first time the Printer Setup Utility is opened, a message appears: **You have no printers available. Would you like to add to your list of printers now?** Click **Add** in the message screen. If you already have printers installed, select **Add** on the tool bar.

The Printer Browser window appears.

**Note:** If you cannot see the toolbar, select **View** from the menu then **Show Toolbar**.



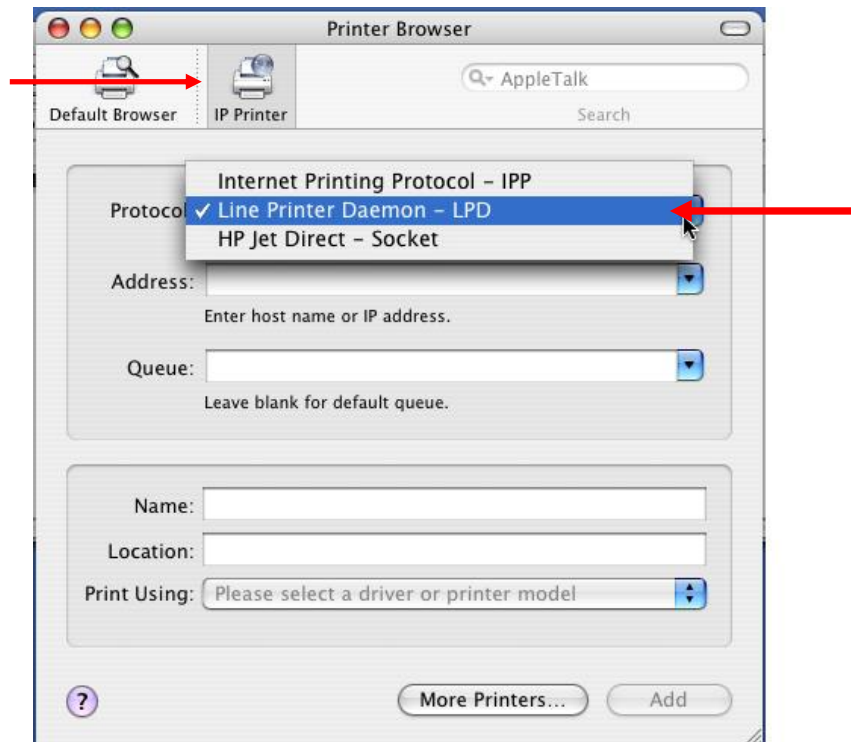
Mac OS 10.4.x has a number of transport protocols available for printing. This document only discusses IP printing and AppleTalk. To install other transport protocols, refer to the Macintosh user guide. If you are configuring the printer using IP continue with the following section. If not, skip to the “AppleTalk Printing” section, later in this document.

## IP Printing

Some earlier Document Centre devices may have a limited feature set if they use the IP printing configuration. That is, you can only select basic features such as number of copies, duplex, stapling, paper tray selections, and type of paper. PPD features that you are able to configure in the OS 9.x Chooser are not available in the OS X 10.4.x Printer Setup Utility software. Such features as fax, secure print, and sample print are not available using the OS X PPD.

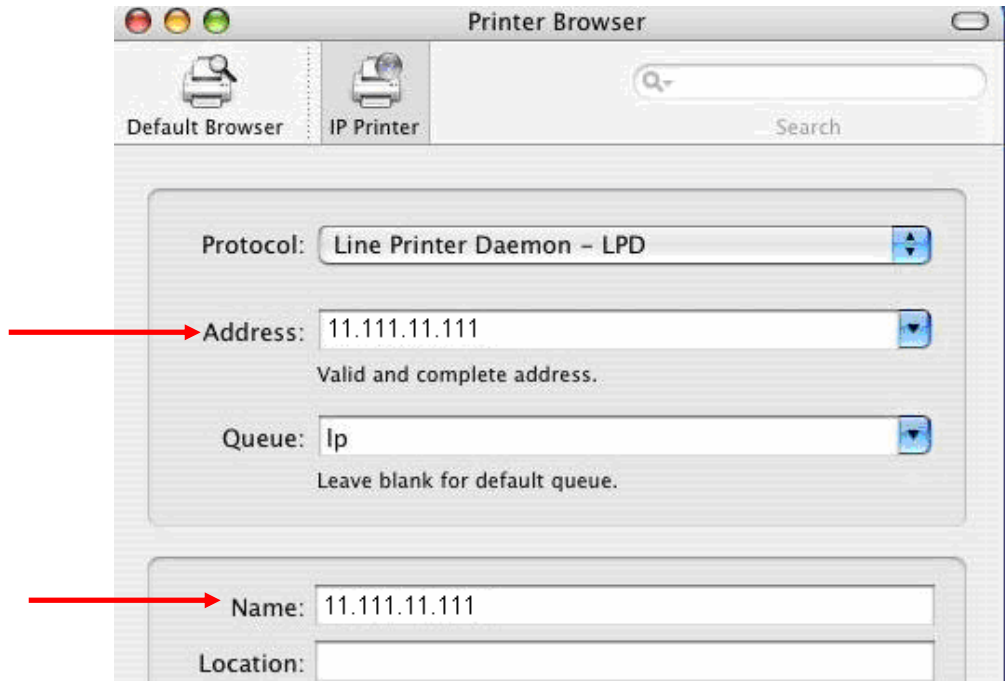
Use the following procedure to set up IP printing.

1. Select **IP Printer** icon at the top of the Print Browser. Then in the Protocol drop down menu, select **Line Printer Daemon – LPD**.

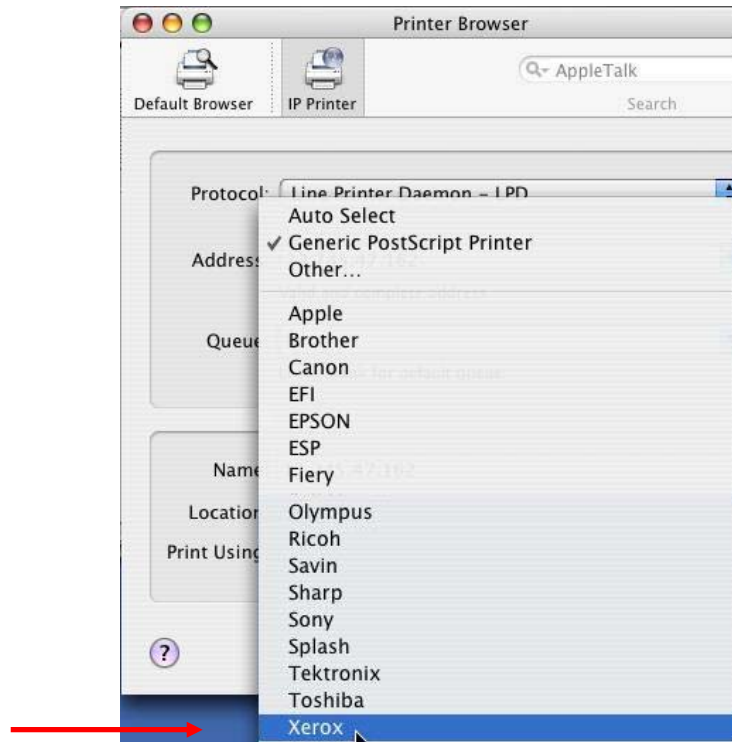


2. In the **Address** field enter the IP address of the printer. This IP address automatically populates the **Name** field in the lower portion of this box. Enter lowercase **lp** for the **Queue** name.

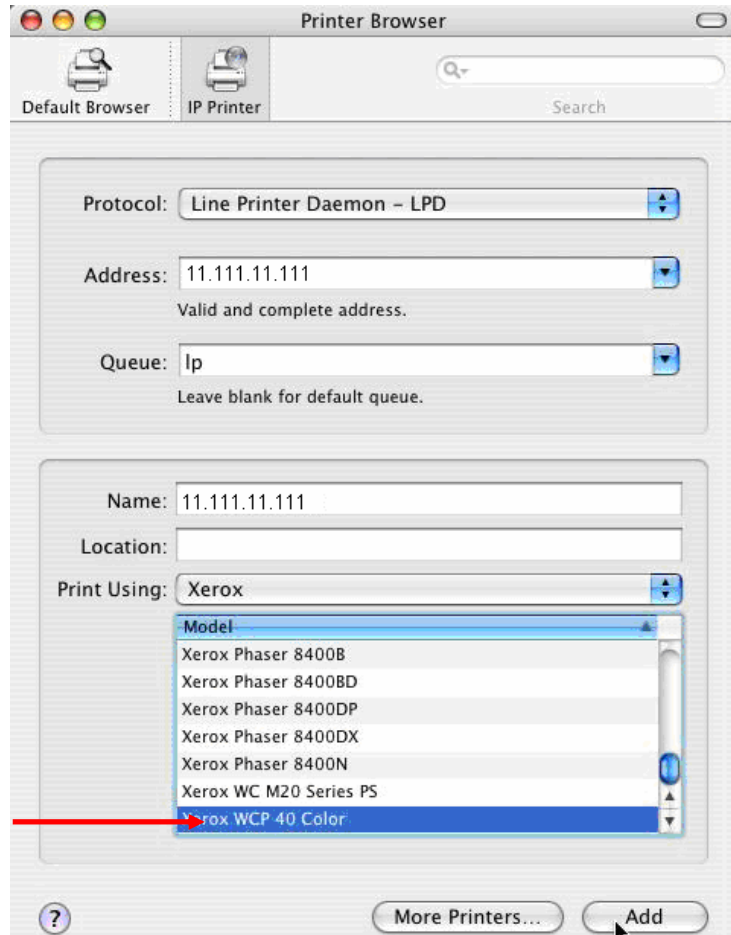
**Note:** The queue name, **lp** is case sensitive.



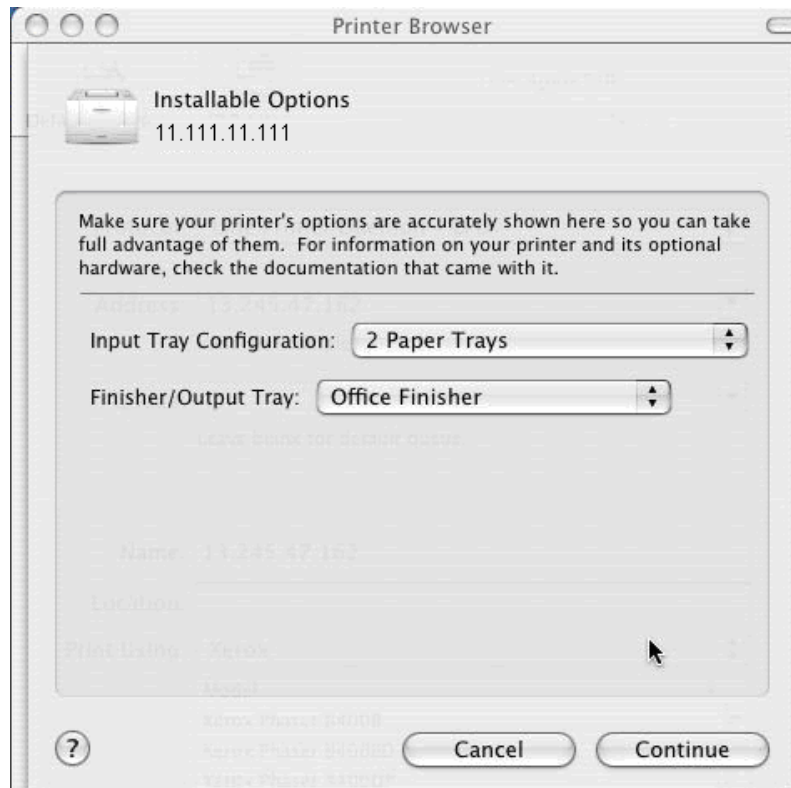
3. In the **Print Using** dropdown menu select **Xerox**.



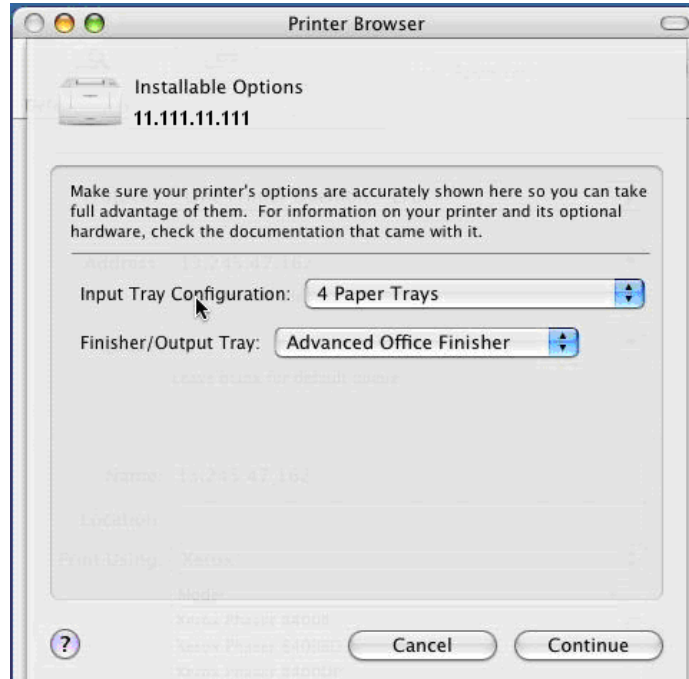
4. Scroll down in the **Model** selection and choose the appropriate **PPD** to match the printer and click **Add**.



5. **Installable Options** is displayed. The items shown are defaults for the PPD.



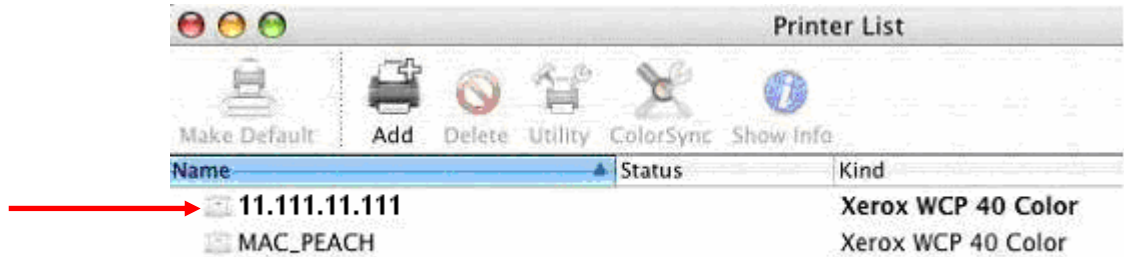
- If required, make changes to the **Installable Options** and click **Continue**. The window automatically closes.



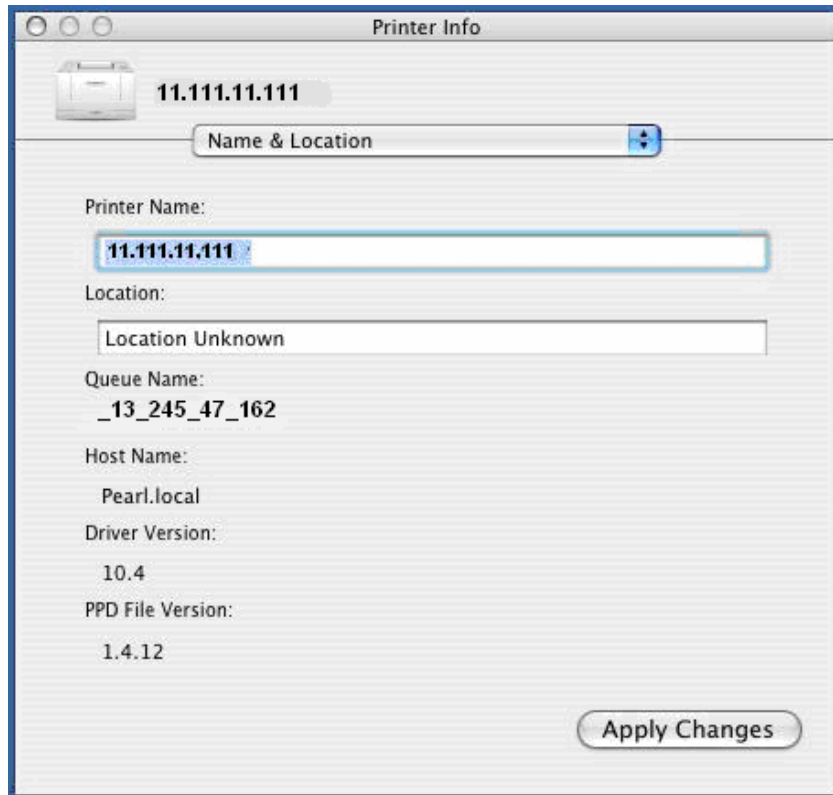
- After closing the Printer Browser window, the Printer List screen shows the LPR printer IP address followed by device **Kind**.

**Note:** The default printer is listed in bold print. The last printer added is automatically made the default.

- Highlight the printer in the Printer list. On the toolbar at the top of the Macintosh desktop, select **Printers** then **Show Info**.



9. On the **Name & Location** screen, you can change the Printer Name. The **Location** field is also customizable for each user. Additional information appears such as **Host Name**, **Driver Version** and **PPD File Version**. If changes are made click **Apply Changes**.



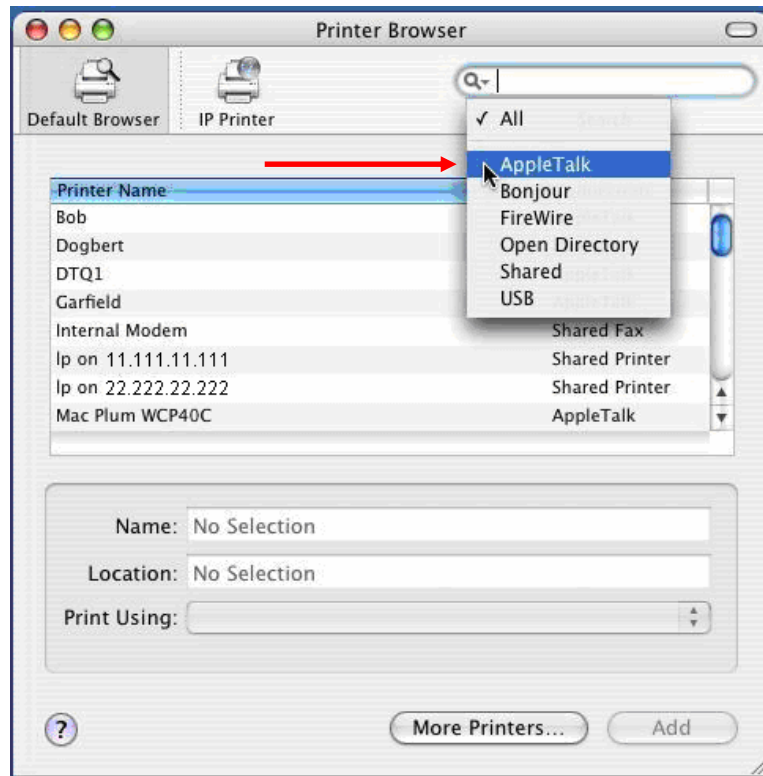
## AppleTalk Printing

Auto Setup is available for all devices with some conditions. It initiates in the following process after you select the AppleTalk printer. The following exceptions apply to device set up using AppleTalk in OS X 10.4.x and Auto Setup:

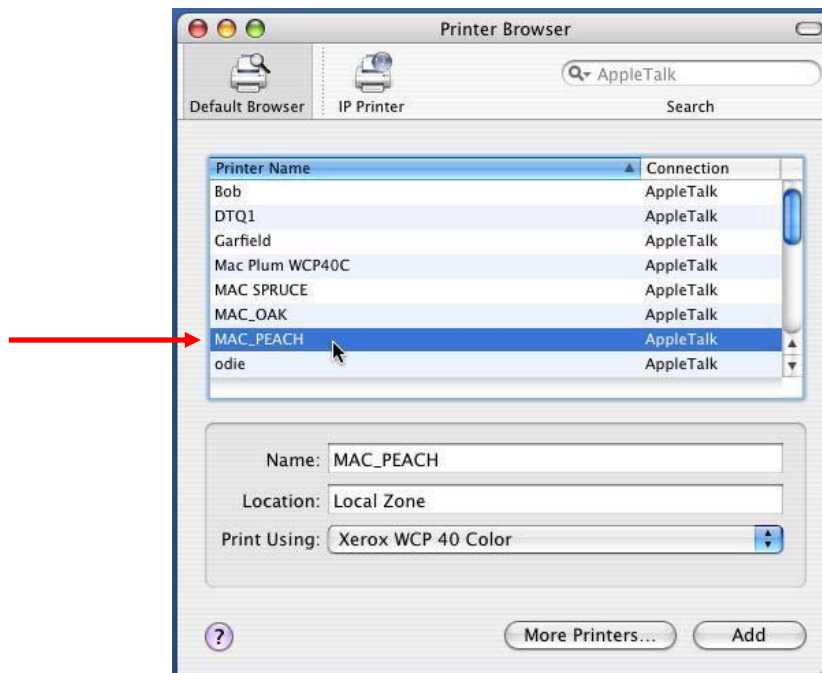
- DC 440/432/425/420 with ESS versions later than 3.2.6s and DC 490/480/470/460 with ESS versions later than 19.05.026 support Auto Setup.
- OS X 10.4.x tries to query the printer to find out what PPD to use. The ESS versions prior to the ones mentioned above for the 4xx family do not support this query. The query fails and generates a -9621 error. As a workaround, you can select the PPD for AppleTalk manually.
- All versions of the DC 555/545/535 support printing using AppleTalk in OS X 10.4.x, but do not support Auto Setup of the PPD. The Printer Setup Utility generates a message that it cannot find the correct PPD and you must manually select the correct PPD.

Use the following procedure to set up AppleTalk printing.

1. Select **Default Browser** then, in the top drop down menu, select **AppleTalk**.



2. Highlight the printer's AppleTalk name. In this example, the AppleTalk name of the printer is **Mac\_Peach**.

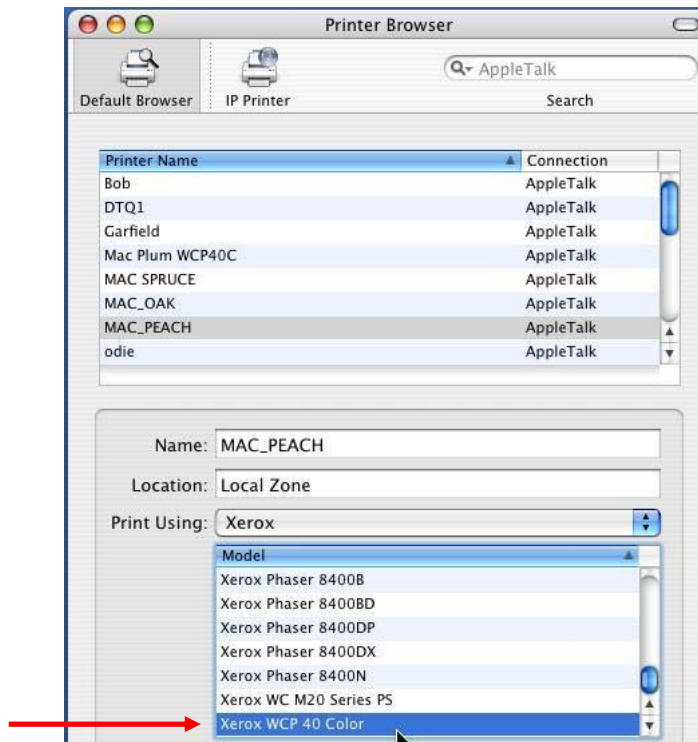




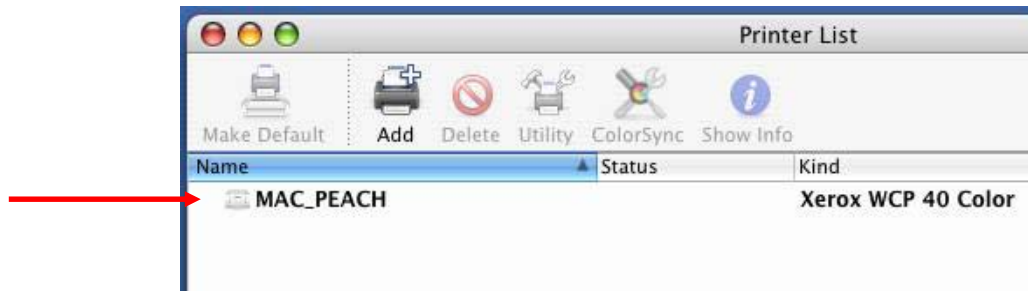
3. Select **Xerox** in the **Printer Model** drop down menu in **Print Using**.



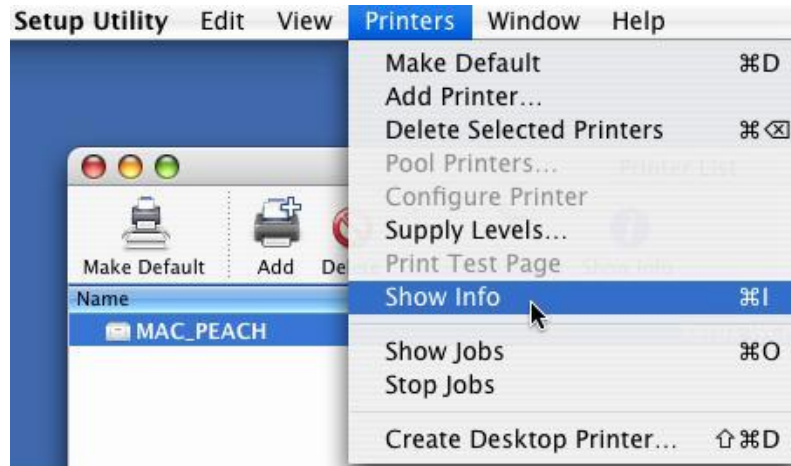
4. Select the **Printer Model** name drop down and choose the PPD for the printer. Highlight the **PPD**. Click **Add**.



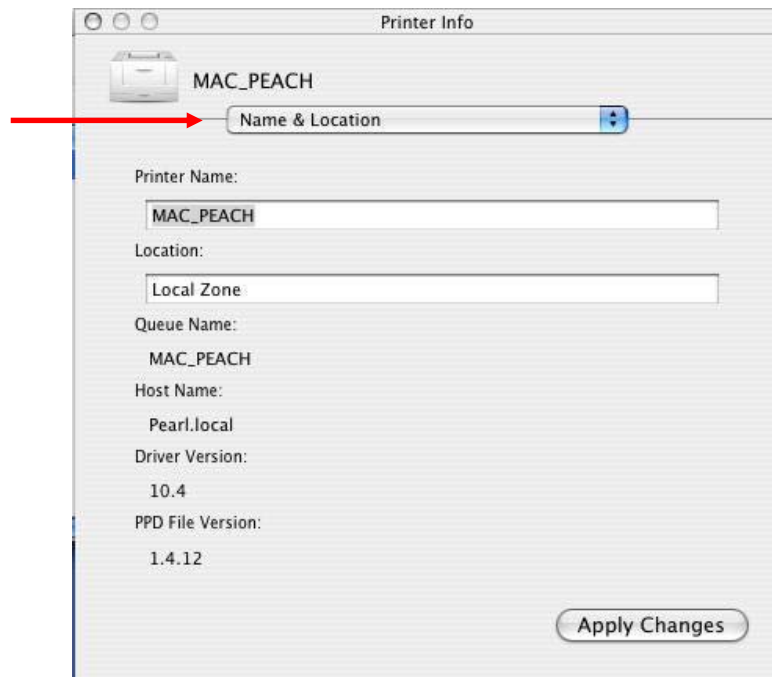
5. The AppleTalk printer appears in the Printer List.



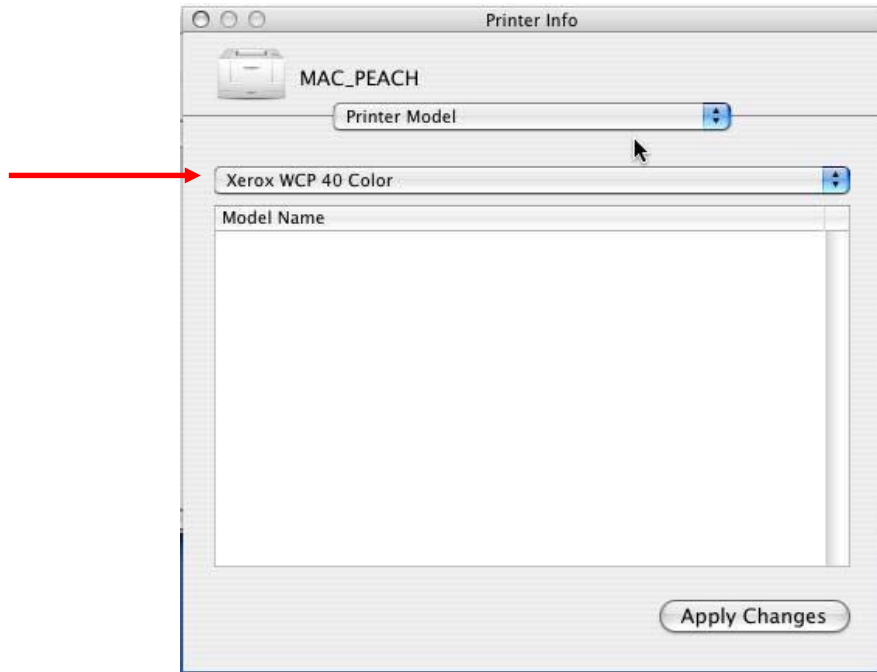
6. Highlight the printer in the Printer List. On the toolbar at the top of the Macintosh desktop, select **Printers** then **Show Info**.



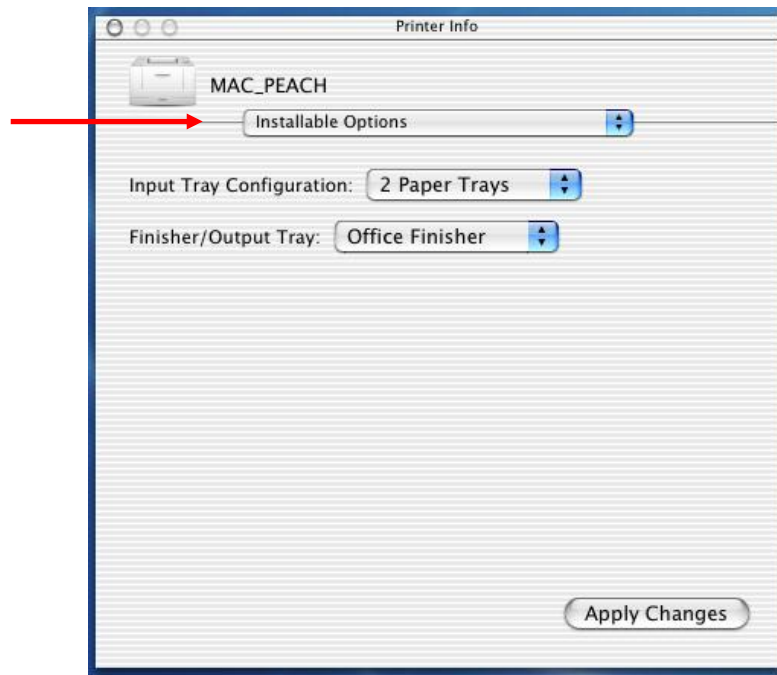
7. On the Printer Info screen with **Name & Location** displayed you can change the Printer Name and add an entry in the Location field (optional). If you make changes click **Apply Changes**.



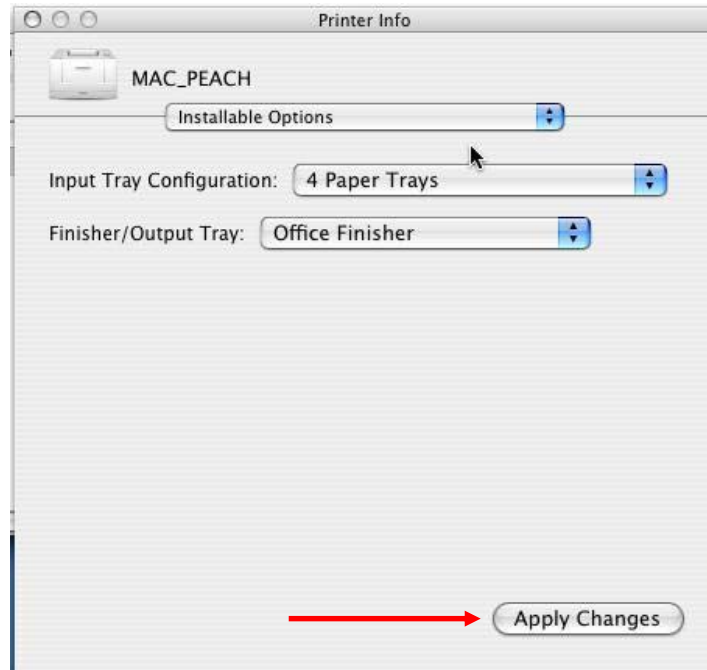
8. In the **Name & Location** drop down, select **Printer Model** to verify which PPD is currently selected.



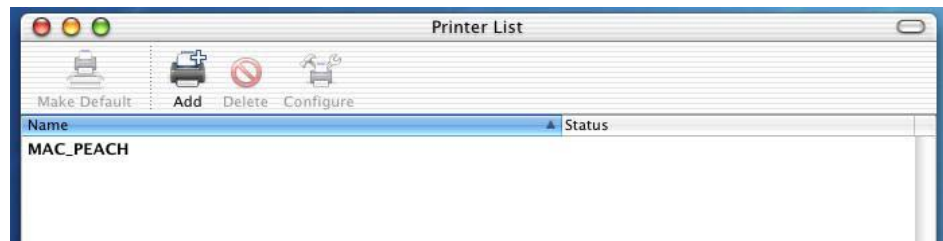
9. Select **Installable Options** from the information dropdown menu. The Items displayed are the default PPD settings.



10. Make any needed changes to the Installable Options. Select the **Apply Changes** button, and close the window.



11. The AppleTalk printer is shown in The Printer List and is ready to use. Close Applications and all other open windows.



## Additional Information

This Customer Tip provided by Xerox Digital Network Solutions Center.

Xerox Customer Support welcomes feedback on all documentation - send feedback via e-mail to: [USA.DSSC.Doc.Feedback@mc.usa.xerox.com](mailto:USA.DSSC.Doc.Feedback@mc.usa.xerox.com).

You can reach Xerox Customer Support at 1-800-821-2797 (USA), TTY 1-800-855-2880 or at <http://www.xerox.com>.

Other Tips about Xerox multifunction devices are available at the following URL: <http://www.office.xerox.com/support/dctips/dctips.html>.

XEROX®, The Document Company®, the digital X®, and all Xerox product names are trademarks of XEROX CORPORATION. Other trademarks belong to their respective owners.

Copyright © XEROX CORPORATION 2006. All Rights Reserved.

# XEROX®