

Customer Tips

...for the user

dc08cc0435
February 13, 2008

Configuring Color Access on the WorkCentre 7328/7335/7345 using Windows Active Directory

Overview

This document describes how to limit access to color copying and printing on the WorkCentre 7328/7335/7345 using Active Directory (AD).

This process allows the device to be set up so users have unlimited access to black and white copy and print functions. However, if a user wants to copy in color they must authenticate at the device.

This document applies to the stated Xerox products. It is assumed that your device is equipped with the appropriate option(s) to support the information within this document.

Assumptions

- LDAP must be configured and working correctly.
- Network Authentication must be configured and working correctly.

Creating Color Access Group within Active Directory

This procedure describes how to create an Active Directory color access group to be used to restrict color copying and printing on the WorkCentre 7328/7335/7345.

1. Click **Start**, point to **Programs**, point to **Administrative Tools**, and then click **Active Directory Users and Computers**.
2. In Active Directory Users and Computers window, expand the domain folder.
3. In the console tree, right-click the Users folder in which you want to add a new group.
4. Click **New**, and then click **Group**.
5. Type the name of the new group. Use a name that you can easily associate with the role or service for which you are creating. In Figure 1 we used TESTCOLOR.

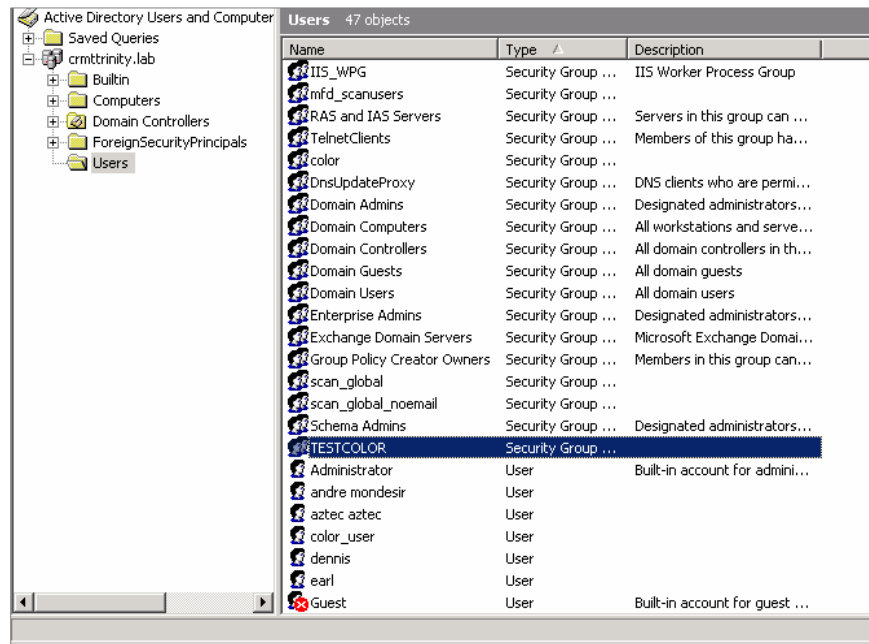


Figure 1

6. To add users and/or groups to the newly created color access group right click on the group and select properties.
7. Select the **Members** tab and click the **Add** button to add members to the group.
8. Click **Finish**.

To Enable Copy Color Access Control

This process will restrict a user from copying in color unless they are authorized to do so via the AD group.

1. At the device press the **Login/Out** button and logon with the Administrator password (factory default passcode is 11111).
2. Press the **Machine Status** button.

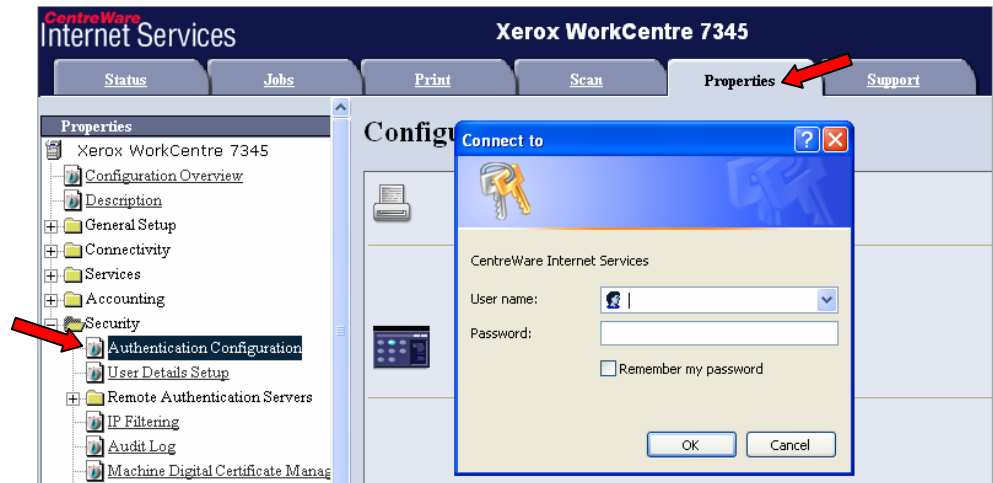


3. Touch the **Tools** tab, select **Authentication/Security Settings** on the left hand side of the screen.
4. Under the Group heading select **Authentication**.
5. Under the Features heading select **Access Control**.
6. Press the **Features Access** button and select **Color Copying**.
7. Press the **Change Settings** button the bottom right of the screen.

8. Select the **Locked** button and press **Save**.
9. Press the **Login/Out** button and press **Reboot Now** for the new settings to take affect.

i *The steps beyond this point including the device's web interface will require a number of device reboots.*

10. Open your favorite web browser and enter the device's IP address.
11. On the device's web page click on the **Properties** tab → the **Security** folder → and **Authentication Configuration**. (You will be prompted for the administrator username and password.)

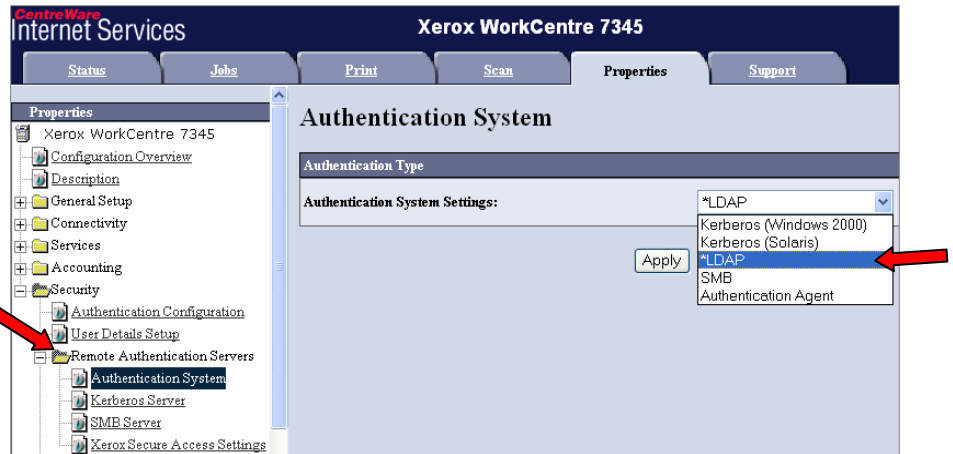


12. At the **Login Type** pull-down menu select **Login to Remote Accounts** and click **Apply**.



13. Click on the **Reboot Machine** button.
14. After the reboot select the **Remote Authentication Servers** folder and **Authentication System**.

15. Select **LDAP** from the **Authentication System Settings** pull-down menu.



16. Click on the **Apply** button and then the **Reboot Machine** button.

17. Select the **Connectivity** folder → **Protocols** folder → **LDAP** folder and select **LDAP Server**.



18. In the **IP Address / Host Name & Port** field enter the LDAP servers **IP Address** or **Host Name**.

19. At the **LDAP Server** pull-down menu select **Microsoft Active Directory**.

20. At the **Search Directory Root** window enter domain syntax. Using Figure 1 as the example the syntax would be **DC=crmttrinity,DC=lab**.

21. Click on the **Apply** button and then the **Reboot Machine** button.

22. After the reboot select **LDAP Group Access** and in the **Color Access Group** window enter the correct syntax for the Color Access Group which must be a fully qualified string. Using Figure 1 as an example the syntax would be **CN=TESTCOLOR,DC=crmttrinity,DC=lab**

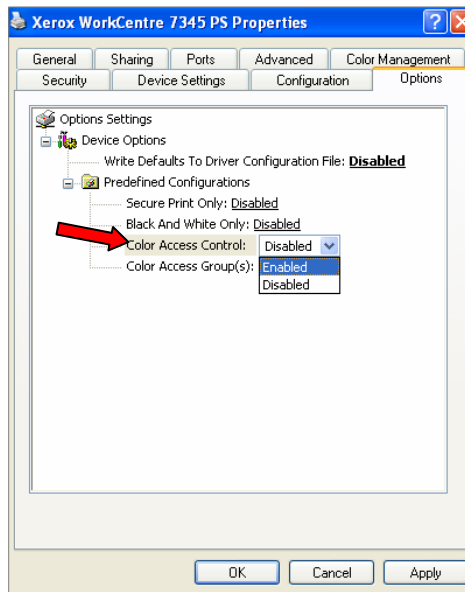
23. Click **Apply**.

When these steps have been completed accurately a user walking up to the device will be able to copy in black & white by default. If the user chooses to make a color copy they will be asked for their **UserID** and **Passcode**. If after authenticating the user is not able to copy in color they will need to press the **Cancel** button bring them back to the **Services** screen.

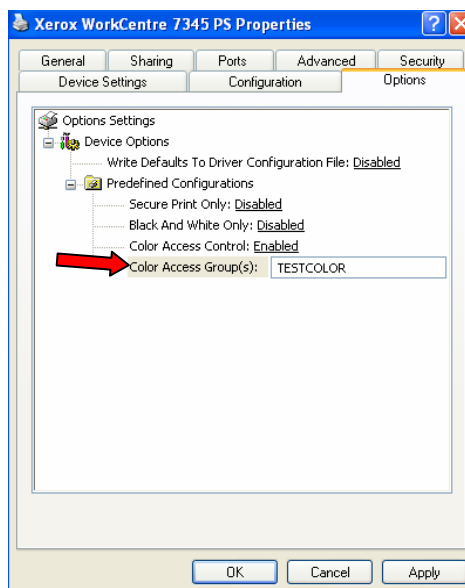
To Enable Print Color Access Control

This process will restrict a user from printing in color unless they are authorized to do so via the AD group.

1. Within the print server open **Printer Properties** and select the **Options** tab.
2. Click the **Predefined Configurations** folder.
3. Click on the **Color Access Control** field and select **Enable**.



4. Click the **Color Access Group** field and enter the group name you created on page one.



5. Click **Apply** and **OK**.
6. On the client side, if the user that installs the print driver is apart of the group given permission to print in color the **Output Color** option within the driver will be selectable between Color and Black and White. If the user does not have permission to print in color the **Output Color** option within the driver will list Black and White and is not selectable.

Additional Information

Xerox Customer Support welcomes feedback on all documentation - send feedback via e-mail to: USA.DSSC.Doc.Feedback@xerox.com.

You can reach Xerox Customer Support at 1-800-821-2797 (USA), TTY 1-800-855-2880 or at <http://www.xerox.com>.

Other Tips about Xerox multifunction devices are available at the following URL: <http://www.office.xerox.com/support/dctips/dctips.html>.

XEROX®, The Document Company®, the digital X®, and all Xerox product names are trademarks of XEROX CORPORATION. Other trademarks belong to their respective owners.

Copyright © XEROX CORPORATION 2008. All Rights Reserved.

