

Upgrading and Uninstalling the Xerox Global Print Driver

Customer Tip



dc09cc0446

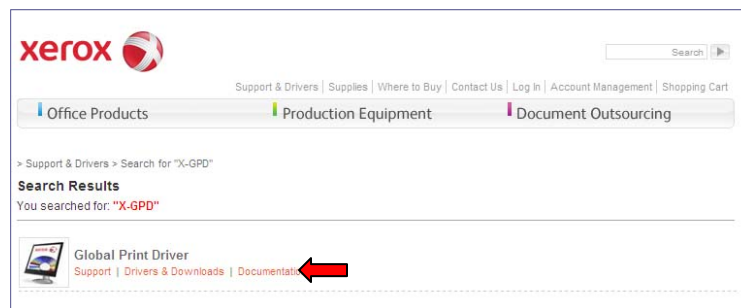
November 13, 2009

This document applies to the Xerox Global Print Driver.

Purpose

This document contains the procedure to upgrade a Xerox Global Print Driver (X-GPD) to a new version. It also contains the procedure to remove an existing Xerox Global Print Driver if uninstalling the driver is necessary.

For installation instructions please see the Xerox Global Print Driver Installation Guide by clicking on [this link](#), or by searching on 'X-GPD' on the Xerox.com Support & Drivers page and selecting the 'Documentation' link from the resulting page.



Upgrade Procedure

This procedure should be used if you are upgrading an existing X-GPD driver to a new version.

1. Ensure that the workstation has an X-GPD driver already installed.
2. Retrieve the latest version of the X-GPD by visiting the X-GPD driver page located at www.xerox.com/global. Select the 'get driver' link from the 'Free Download' section.



3. Click on the PostScript or PCL version of the X-GPD driver that is appropriate for your situation, and after accepting the End-User License Agreement, select **[Run]** which will start the installation wizard.

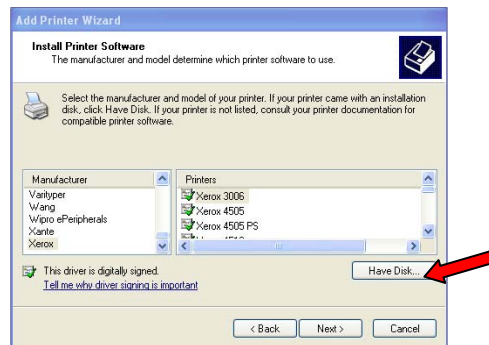
Note 1: Do not use the 'Install from Web' download option. Instead, choose the "Download and Install" package(s).

Note 2: Download the same PDL (PS, PCL, PCL6) driver as the one that currently exists on your system.
4. At the 'Xerox Global Print Driver' window make note of the 'Destination folder' as it will be used in future steps and select **[Install]**.

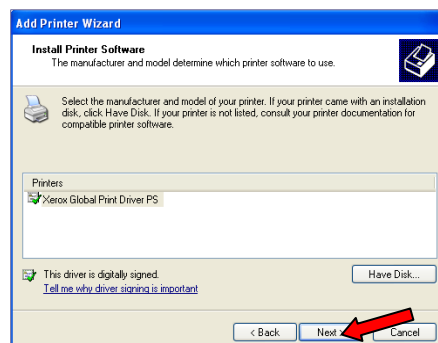
Note: The default 'Destination Folder' is C:\Xerox\X-GPD_Driver



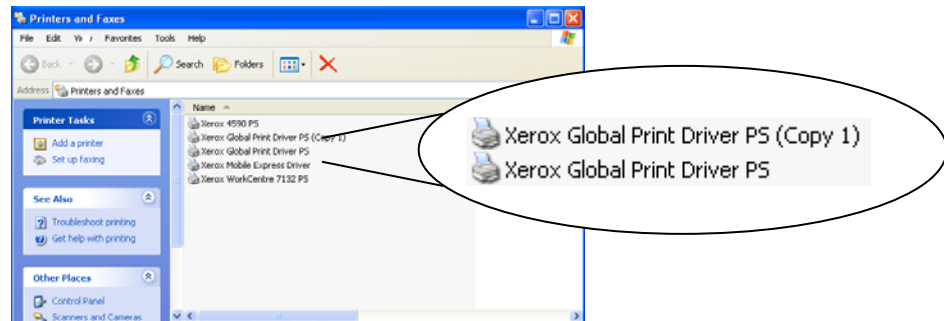
5. At the 'Welcome to the Add Printer Wizard' window select **[Next]**.
6. At the 'Local or Network Printer' window select the correct options for your situation and select **[Next]**.
7. At the 'Select a Printer Port' window select the correct port for your situation and select **[Next]**.
8. At the 'Install Printer Software' window select **[Have Disk]**.



9. At the 'Install from Disk' window select **[Browse...]** and go to the location where the driver files were placed in step 4.
10. Select the .inf file and select **[Open]** and then **[OK]**.
11. At the 'Install Printer Software' window select **[Next]**.



12. At the 'Use Existing Driver' window select 'Replace existing driver' and then select **[Next]**.
13. At the 'Name Your Printer' window you may choose to change the default printer name and decide if this will be the default printer. Select **[Next]**.
14. At the 'Printing Sharing' window you may choose to share the printer or not. If you choose to share the printer a Share name must be entered. Select **[Next]**.
15. At the 'Print Test Page' window select if you would like to print a test page. Select **[Next]** and **[Finish]** which will initiate the installation of the printer driver. If you have chosen to not print a test page the 'Add Printer Wizard' window will disappear. If you have chosen to print a test page you must acknowledge that the test page printed successfully.
16. From the operating system's Control Panel click on 'Printers and Faxes'. You may notice that there is a duplicate entry for the driver you just installed. Although there are two print driver objects there is only one underlying print driver which is the one you just installed. Delete one of the duplicate entries.



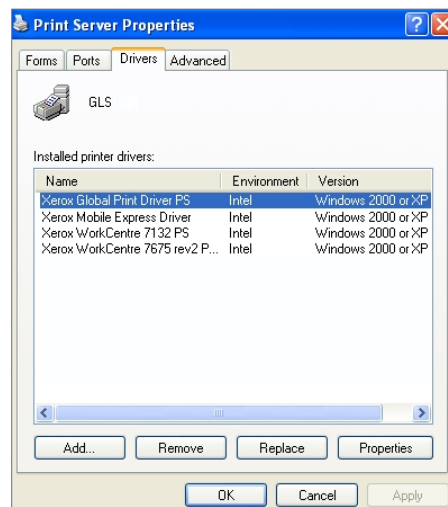
17. You have now completed the upgrade of the Xerox Global Print driver.

Performing a “Clean” Uninstall of the X-GPD

This procedure should only be used if a “clean” uninstall of the Xerox Global Print Driver is necessary.

To perform the following procedure you must have administrative rights to the system where the X-GPD resides.

1. Refresh the print spooler by performing a re-boot on the server or workstation. You may also refresh the print spooler by selecting **[Start → Run]** and type **net stop spooler** to stop the spooler service, and then type **net start spooler** to start the spooler service.
2. Select **[Start → Settings → Printers]** and delete all the printer objects associated with the printer driver you want to uninstall.
3. In the printers folder select **[File → Server → Properties]**.
4. Select the **[Drivers]** tab to display all the drivers currently installed on the system.



5. Highlight the Xerox Global Print Driver and select **[Remove]** to uninstall the driver files as displayed below:
 6. Browse to the location: **C:\Windows\System32\Spool\Drivers\W32x66** and then delete the following depending upon the print driver installed:
 - **PS Driver**
xeroxdt_180_hlc_publ0ba8
 - **PCL Driver**
xeroxdt_180_hlc_publ70c3
 - **PCL6 Driver**
xeroxp4110_pcl68a91
 7. Browse to the location: **C:\Windows\System32\Spool\Drivers\W32x66\3** and then delete the following depending upon the print driver installed:
 - **PS Driver**
xunivp*
 - **PCL Driver**
xunivl*
 - **PCL6 Driver**
xunivx*
 8. Empty your systems' Recycle Bin to ensure all driver files are deleted.
 9. Refresh the print spooler by performing a re-boot on the server/workstation, or by selecting **[Start → Run]** and type **net stop spooler** to stop the spooler service, and then type **net start spooler** to start the spooler service.
- Note:** For additional information on how to uninstall a traditional print driver please refer to the Customer Tip entitled 'Uninstalling Windows 2000/XP Printer Drivers' located on the Xerox support site at <http://www.office.xerox.com/support/dctips/dc07cc0428.pdf>.

Additional Information

You can reach Xerox Customer Support at <http://www.xerox.com> or by calling Xerox Support in your country.

Xerox Customer Support welcomes feedback on all documentation - send feedback via e-mail to: USA.DSSC.Doc.Feedback@mc.usa.xerox.com.

Other Tips about Xerox multifunction devices are available at the following URL: <http://www.office.xerox.com/support/dctips/dctips.html>.

© 2009 Xerox Corporation. All rights reserved. XEROX®, the sphere of connectivity design, and Global Print Driver™ are trademarks of Xerox Corporation in the United States and/or other countries.