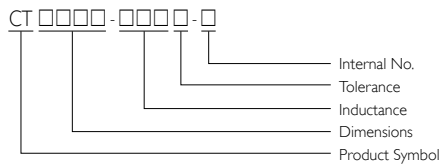


SMD Wire Wound Chip Inductors

CT Series



PRODUCT IDENTIFICATION



APPLICATIONS

RF products for Cellular Phone, GPS Receiver, Base Station, Repeater, Wireless LAN/Mouse/Keyboard/ Earphone, Remote Control, Security System and other RF modules.

OUTLINE

Based on our technical expertise and skill in accurately winding, these chip inductors are designed as filtering, impedance matching, resonance and choke circuits for RF designers.

The standard series as well as custom design to meet your needs of telecom & wireless products.

FEATURES

Meet Sony SS-00259's criteria for lead-free product.

Ceramic body and wire wound construction provide highest SRFs.

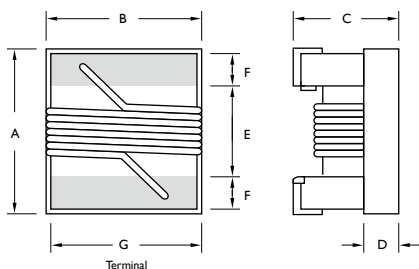
These ultra-compact inductors provide exceptional Q values, even at high frequencies.

Their ceramic construction delivers the highest possible SRFs as well as excellent Q values.

The non-magnetic coil form also assures the utmost in thermal stability, predictability and batch consistency.

At just 1.02 mm high, CT0805 is the lowest profile SMD inductor.

SHAPES AND DIMENSIONS



TYPE	UNIT	A	B	C	D	E	F	G
		Max.	Max.	Max.				
CT0805	inch	0.093	0.068	0.039	0.020	0.050	0.020	0.040
	mm	2.35	1.73	1.10	0.51	1.27	0.51	1.02

ELECTRICAL CHARACTERISTICS

PART NO.	INDUCTANCE (nH)	TOLERANCE (±%)	TEST FREQUENCY (MHz)	Q Min.	TEST FREQUENCY (MHz)	SRF (MHz) Min.	DC RESISTANCE (Ω) Max.	I _{rms} (mA) Max.	COLOR CODING
CT0805-1N8□-N	1.8	10	250	55	1,500	9,400	0.03	800	Black
CT0805-3N9□-N	3.9	10	250	50	1,000	6,100	0.06	800	Brown
CT0805-4N7□-N	4.7	5 / 10	250	50	1,000	5,500	0.06	800	Red
CT0805-6N8□-N	6.8	5 / 10	250	50	1,000	5,500	0.08	800	Orange
CT0805-8N2□-N	8.2	5 / 10	250	50	1,000	4,800	0.08	800	Yellow
CT0805-10N□-N	10	2 / 5 / 10	250	55	750	3,300	0.08	800	Green
CT0805-12N□-N	12	2 / 5 / 10	250	55	750	3,800	0.10	800	Blue
CT0805-15N□-N	15	2 / 5 / 10	250	50	500	2,950	0.10	800	Violet
CT0805-18N□-N	18	2 / 5 / 10	250	50	500	3,100	0.13	800	Gray
CT0805-22N□-N	22	2 / 5 / 10	250	50	500	2,900	0.15	800	White
CT0805-27N□-N	27	2 / 5 / 10	250	50	500	2,450	0.23	600	Black
CT0805-33N□-N	33	2 / 5 / 10	250	55	500	2,350	0.28	600	Brown
CT0805-39N□-N	39	2 / 5 / 10	250	55	500	2,200	0.33	600	Red
CT0805-47N□-N	47	2 / 5 / 10	200	50	500	2,000	0.39	600	Orange
CT0805-56N□-N	56	2 / 5 / 10	200	50	500	1,850	0.39	500	Yellow
CT0805-68N□-N	68	2 / 5 / 10	200	50	500	1,500	0.40	500	Green
CT0805-82N□-N	82	2 / 5 / 10	150	50	500	1,500	0.44	500	Blue
CT0805-R10□-N	100	2 / 5 / 10	150	50	500	1,200	0.64	400	Violet
CT0805-R12□-N	120	2 / 5 / 10	150	40	250	1,150	0.68	300	Gray
CT0805-R15□-N	150	2 / 5 / 10	150	40	250	1,050	0.80	300	White
CT0805-R18□-N	180	2 / 5 / 10	150	40	250	950	0.90	300	Black
CT0805-R22□-N	220	2 / 5 / 10	150	40	250	900	0.98	300	Brown
CT0805-R27□-N	270	2 / 5 / 10	150	40	250	850	1.30	300	Red
CT0805-R33□-N	330	2 / 5 / 10	100	40	250	800	1.45	300	Orange
CT0805-R39□-N	390	2 / 5 / 10	100	35	250	700	1.60	300	Yellow
CT0805-R47□-N	470	2 / 5 / 10	50	25	100	600	1.80	300	Green
CT0805-R56□-N	560	2 / 5 / 10	25	18	50	550	1.90	300	Blue
CT0805-R62□-N	620	2 / 5 / 10	25	18	50	450	2.00	300	Violet
CT0805-R68□-N	680	2 / 5 / 10	25	18	50	420	2.10	300	Gray
CT0805-R75□-N	750	2 / 5 / 10	25	18	50	400	2.20	300	White
CT0805-R82□-N	820	2 / 5 / 10	25	18	50	400	2.50	300	Black
CT0805-1R0□-N	1,000	5 / 10	25	17	50	330	3.10	300	Brown

Note:

When ordering, please specify tolerance and packaging codes.

Tolerance: G = ± 2%, J = ± 5%, K = ± 10%

Packaging: Clear tape and reel (standard)

Test Instruments: L/Q- Agilent/HP4291A+Agilent/HP16197A

SRF- Agilent/HP8753D+Agilent/HP4291A

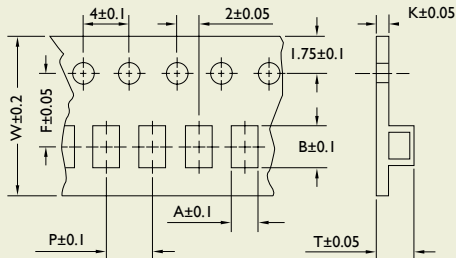
RDC- CH502BC/HP4338B

I_{rms}- For a 15 °C rise above 25 °C ambient.

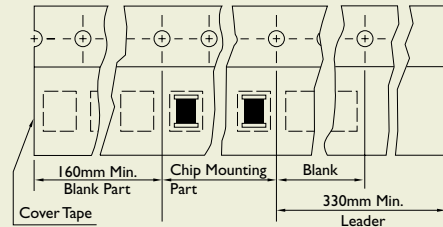
Operating Temperature Range: -40 °C to +125 °C



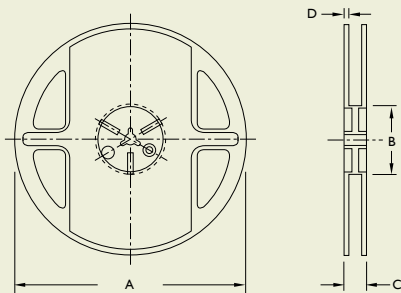
TAPE DIMENSIONS



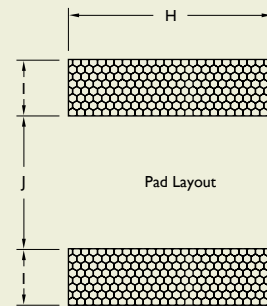
TAPE MATERIAL



REEL DIMENSIONS



RECOMMENDED PATTERN



Dimensions: mm

TYPE	TAPE DIMENSIONS							RECOMMENDED PATTERN			REEL DIMENSIONS				QUANTITY/ REEL	
	A	B	T	W	P	F	K	UNIT	H	I	J	A	B	C		D
CT0805	1.85	2.45	1.00	8	4	3.50	0.23	inch	0.070	0.040	0.030	178	60	12	1.5	2,000
								mm	1.78	1.02	0.76					