

Quick Reference
ARe Lens

Included items

Head Mount Display (HMD)

Batteries (2)

Nose pad attachment

Support belt

Shoulder Strap C-BOX case

Control Box (C-BOX)

USB Cable for Charging

Headband

Names of Parts and Their Functions

Safety parts

Contacts

Display unit

Micro phone

Gesture sensor

Lens

F1(yellow) button
Press to turn on/off the microphone
Long press(three seconds) to turn on/off the gesture sensor.

F2(green)button
Press to turn on/off the display
Press F2 button and the A and B button at the same time to adjust display brightness.

Camera lamp

Camera

Shoulder Strap

HMD holder

C-BOX case

Power button
F3(red)button
Long press (three seconds) to return to the Home Screen.

F4(blue)button
A/B/C/D/E buttons
Use these buttons to perform ARe Lensup, down, left, and right movement operations, and to execute the selected item.

C-BOX Indicator lamp	ARe LensStatus
■ Lit blue	Operating
⚡ Flashing blue	Running Power button has just been pressed.
■ Lit red	Charging When the ARe Lens is turned off and power is being supplied by the connector for charging.
⚡ Flashing red	USB power supplying When the ARe Lens is operating and power is being supplied by the connector for charging.
⚡ Lit green (for one sec)	HMD not connected
⚡ Lit yellow (for one sec)	Low battery level
⚡ Lit white (for one sec)	Abnormal battery temperature
■ Unlit	Power off

Battery Indicator lamp	Battery	Battery Status	Replacing a Battery
⚡ High-speed flashing	■	Unused	Replaceable
⚡ Low-speed flashing	■	In use	Not replaceable
■ Lid yellow	■	In use	Not replaceable
■ Unlit	■	Unused	Replaceable

1 Charging Batteries

An AC adapter for charging is not included. Purchase one that meets the specifications below.
KONICA MINOLTA Specifications
Rated Voltage: 5 V; Rated Current: 1.5 A minimum;
USB Type A output

Charging

2 Preparation1

Wireless adapter

3 Preparation2

Support belt

4 Turning On Power

Turning On Power

Running

Long press for three seconds

Turning Off Power

When this indicator goes out...

Release

5 Adjust the width of the HMD

Width adjustment 125mm

150mm

People who don't wear glasses

Push here when it remove

6 Mounting the Product

Wearing the Display on the Left Eye (View from Behind)

Wearing the Display on the Right Eye (View from Behind)

Strap on right shoulder

Strap on left shoulder

Cable in front

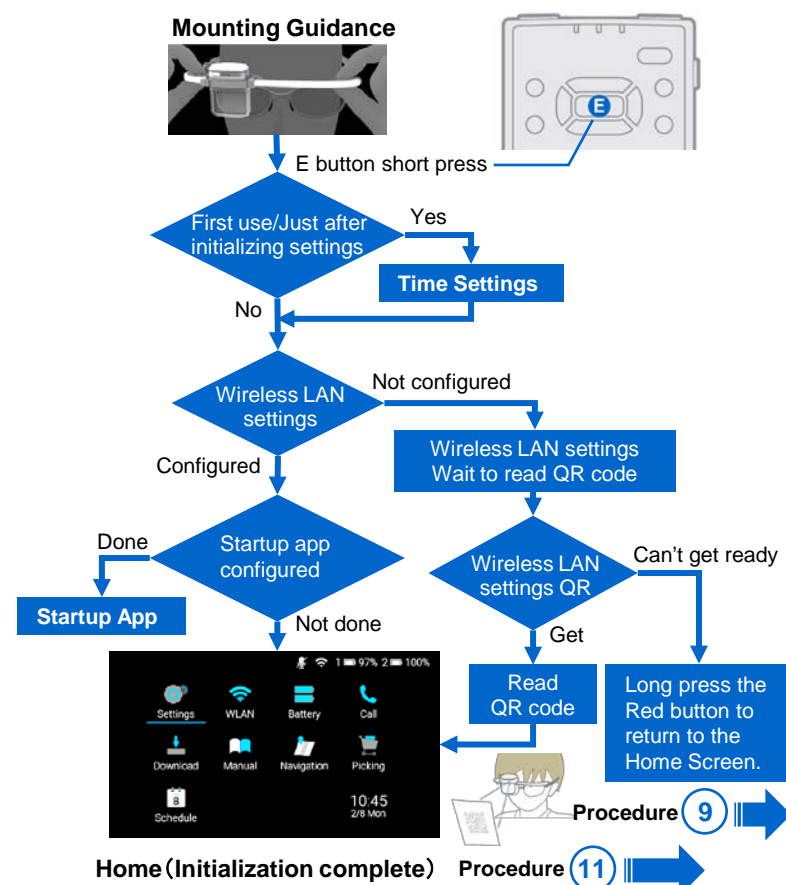
Clip on clothes

Wear the C-BOX in back.

7 Adjustment

Adjustment

8 Transition Following Startup



9 Using a QR Code to Configure Settings1

[Getting Ready]

1. To obtain the QR code, use any of the standard Wireless LAN QR code generators available online (e.g. <https://qifi.org>) or ask your IT department to provide you valid QR code. (Here, we will use <<https://qifi.org>> by way of example.)

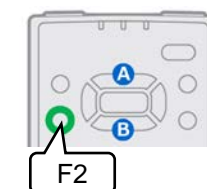
[Procedure]

1. Access <<https://qifi.org>> in a web browser to display the input screen displaying the following items: <SSID>, <Encryption>, <Key>.

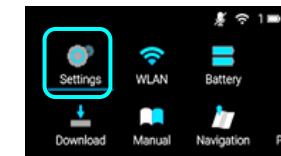


11 Adjust the brightness of the display

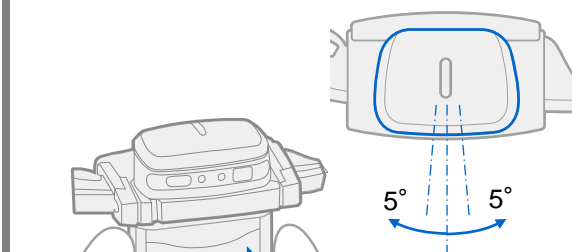
◆ If the display is too bright for the eyes
Darken the display.
Press the F2 (green) button + B (down) button make the display darker.
Press the F2 (green) button + A (up) button make the display brighter.



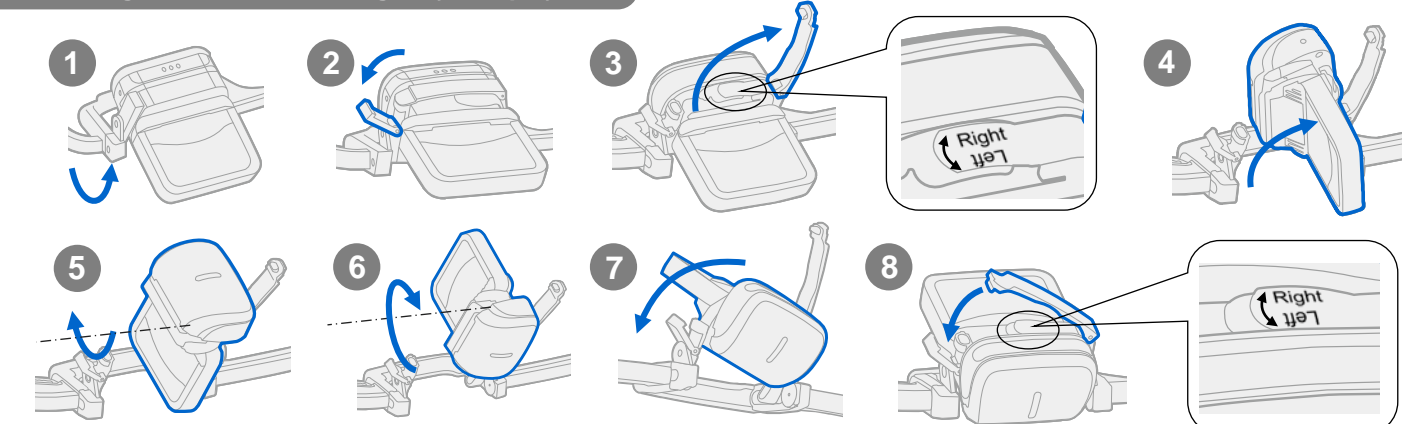
◆ If changes in brightness are annoying
Switch to Manual brightness adjustment (Home Screen Setup).
1. Change Auto→Manual
Setup→Brightness→Auto Control→OFF
2. Configure the brightness (fixed) setting
Setup→Brightness→Level(Manual)
※When shipped from the factory, brightness adjustment is set to Auto.



Adjusting the Display Position



Switching Between Left and Right Eye Display1

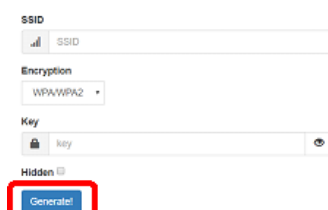


10 Using a QR Code to Configure Settings2

2. For each item displayed, input the information for the wireless LAN access point to which this product is connected.

3. Click the Generate! button on the screen.*1

*1: It will render the QR code in your browser, on your machine. It is never transmitted to the server.

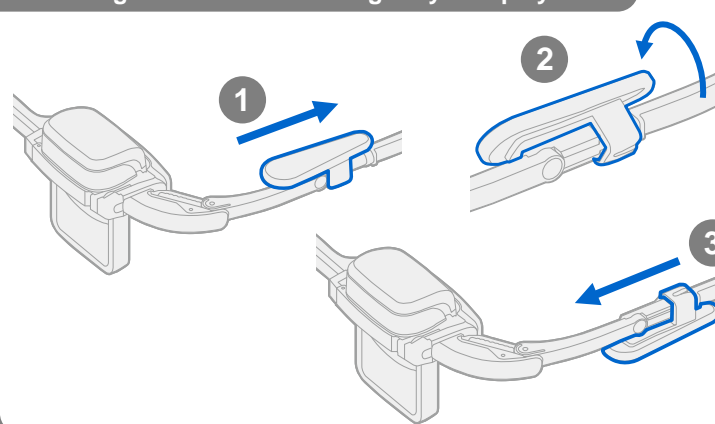


4. Displays a QR code for wireless LAN connection on the screen. Use a QR code displayed on the screen or a printout of the screen.*2

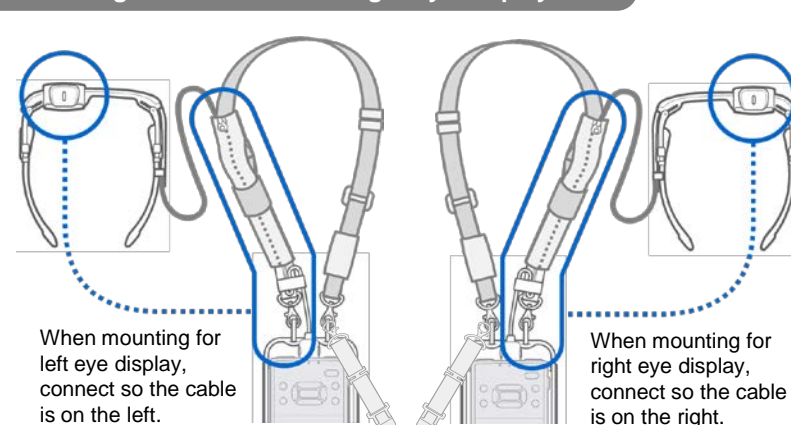
*2: When printing a QR code, printing on A4 paper is recommended for easy reading by this product.



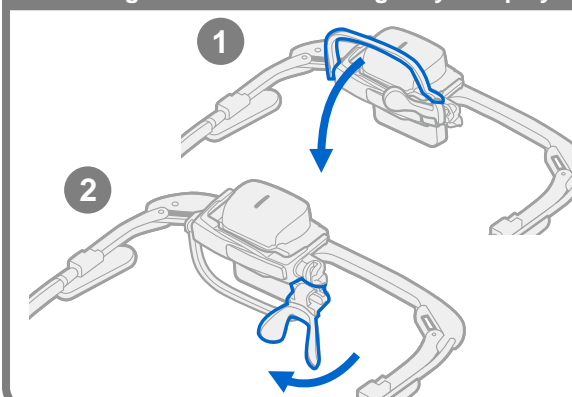
Switching Between Left and Right Eye Display2



Switching Between Left and Right Eye Display3



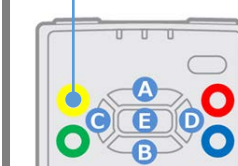
Nose pad attachment Switching Between Left and Right Eye Display



Gesture sensor

F1yellow button

Long press(three seconds) to turn on/off the gesture sensor. (When shipped from the factory, the gesture sensor is turned off.)



Holding a hand over the HMD (for two seconds) will perform an E button short press operation.