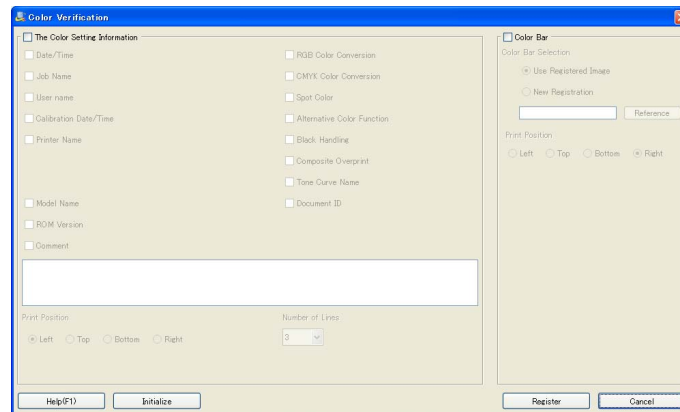


12.4 Set Color Verification

This section describes how to set the color bar and the color setting information.

- 1 From [File] menu, select [Color Verification].
[Color Verification] appears.



- 2 Click [The Color Setting Information] when you set the content of the color setting information for printing.
 - When you check [Date/Time], [Job Name], [User name], [Calibration Date/Time], [Printer Name], [RGB Color Conversion], [CMYK Color Conversion], [Tone Curve Name], [Spot Color], [Alternative Color Function], [Black Handling], [Composite Overprint], [Document ID], [Model Name], [ROM Version] or [Comment], you can set as the printing items on the job outputting.
 - From [Number of Lines], select the number of lines (1 to 5 lines).
 - From [Print Position], select the radio button to set the printing position.
- 3 When you set the color bar, check [Color Bar] and set the printing items.
 - Select [Use Registered Image] when you use the color patch which was registered at factory shipping.
 - Select [New Registration] when you use the eps file you specify,
 - When [Hold] is selected as the print mode in the printer driver, select either of the check boxes: [User name], [Calibration Date/Time], [Printer Name], [RGB color Conversion], [CMYK Color Conversion], [Tone Curve Name], [Spot Color], [Alternative Color Function], [Black Handling], [Composite Overprint], [Document ID], [Model Name], [ROM Version] or [Comment], then you can set as the printing items on the job outputting.
 - From [Print Position], select the radio button to set the printing position.
- 4 When you want to discard the current settings and use the registered settings at factory shipping, click [Initialize].
- 5 When you register the settings of the color information and the color bar, click [Register].
[Color Verification] is closed to return to [Color Default Settings] screen.

→ File names and previews of registered color bars are not displayed.