

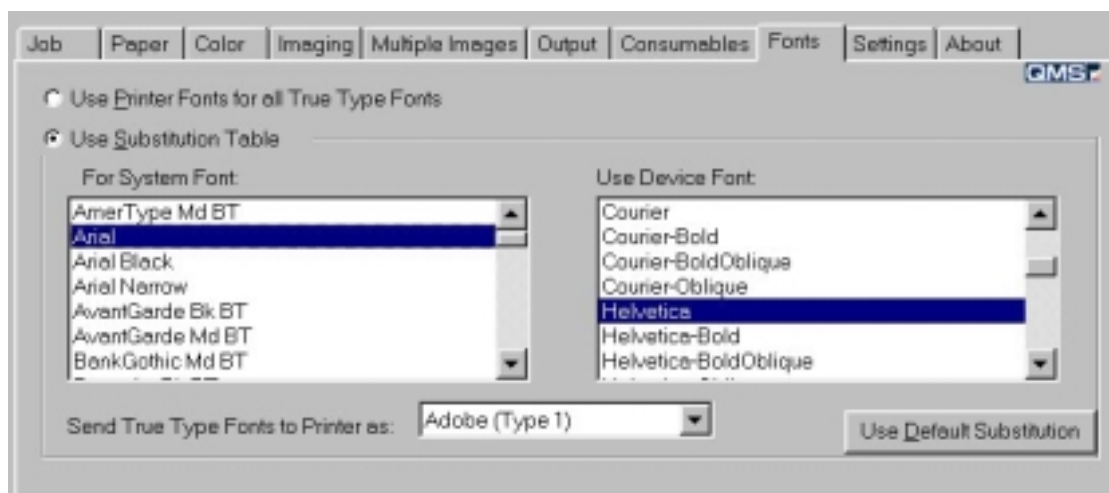
Windows shows the Euro Character but the character is not printed (Crown).

On the Microsoft web site, www.microsoft.com/downloads, you are able to download updates for the Euro Symbol support. If this patch has been downloaded, you are able to add the Euro Symbol for every font.

When the Euro Symbol is required, press <ALT>0128 and the Euro Symbol € will be displayed.

Please note: When using a printer font on your screen please check the font substitution table in the printer driver.

For example: When this text is printed with the Arial font, the Euro Symbol € will not be printed because the font substitution table changes the Arial font to the Helvetica Printer font. This Helvetica printer font does not contain the Euro Character so the printer does not know the Euro Symbol. Therefore the printer will print a instead of €.



In the font substitution table change the Helvetica setting to "Download as Sofffont". This means that when Arial is requested, the font will be downloaded to the printer and therefore the correct updated characters are printed.

Euro character in PCL emulation on a Crown Printer.

The Magicolor 2200 printer is the first printer that has the Euro character adds in some symbol sets.

- MC Text (12J) char: 219
- PS Math (5M) char: 240
- Windows 3.0 Latin 1 (9U) char: 128
- Windows 3.1 Latin 1 (9U) char: 128
- Windows 3.1 Latin 2 (9E) char: 128
- Windows 3.1 Latin 5 (5T) char: 128
- Windows Baltic (19L) char: 128

Print Euro Character on a Color Page Pro EX.

Upgrade to the Adobe v4.41 PS driver, which can be downloaded from the Adobe Website.