



**KONICA MINOLTA**

**Universal Print Driver  
System Administrator's Guide  
– Addendum –**

Engineering Group  
Service and Support Division  
KONICA MINOLTA Europe GmbH

<b>Version</b>	<b>Date</b>	<b>Author</b>
2.5.5	October 6, 2014	M. Morisse

## Revision History

Version	Date	Section	Modified Contents	Editor
2.5	June 24, 2014		Initial version	MM
2.5.1	July 3, 2014		Added reference to <a href="http://www.konicaminolta.eu/dlark">www.konicaminolta.eu/dlark</a>	MM
2.5.2	August 13, 2014		Corrected Revision History	MM
2.5.5	October 6, 2014	All	Updated for MR5+	MM
		2	Added versions for MR5+	MM
		3	Added "Full Scripting support"	MM
		4	Added sections according to version	MM
		5	Added "From MR5 onwards ..."	MM
		6	Added "From MR5 onwards ..."	MM
		6.3	Added section	MM
		8	Added section	MM

## **Copyright**

All Rights Reserved, Copyright(c) 2014 KONICA MINOLTA, INC.

## **Trademark Credits**

PostScript is a trademark of Adobe Systems Incorporated.

PCL is a trademark of Hewlett-Packard Company.

Microsoft, Windows, Windows XP, Windows Server 2003, Windows Vista, Windows Server 2008, Windows 7, Windows 8, Windows Server 2012 and Windows 8.1 are U.S. registered trademarks of Microsoft Corporation.

Citrix®, Citrix Presentation Server™, and XenApp™ are trademarks of Citrix Systems, Inc.

# Index

<b>1. Purpose of this document .....</b>	<b>5</b>
<b>2. Target Driver Version.....</b>	<b>5</b>
<b>3. New Functions .....</b>	<b>5</b>
<b>4. New and Updated Supported Models .....</b>	<b>5</b>
4.1 Newly Supported Models.....	5
4.1.1 From MR5:.....	5
4.1.2 From MR5+:.....	5
4.2 Updated Models .....	6
4.2.1 From MR5:.....	6
4.2.2 From MR5+:.....	6
<b>5. Multi-Language Support .....</b>	<b>6</b>
5.1 Languages .....	6
5.2 Switching between languages during Installation.....	7
5.3 Switching between languages after Installation .....	10
5.4 Preferred and Fallback languages .....	13
5.5 Windows Display Language .....	14
5.6 Notes and Limitations .....	14
<b>6. Switchable Device Selector .....</b>	<b>15</b>
6.1 Switching Device Selector during Installation.....	15
6.2 Switching Device Selector after Installation (MR5) .....	16
6.3 Switching Device Selector after Installation (MR5+ and above) .....	17
<b>7. MSI distribution.....</b>	<b>18</b>
<b>8. Full Scripting Support .....</b>	<b>18</b>
8.1 General Scripting Procedure .....	19
8.2 InstCFG.ini format.....	19
8.3 InstCFG.ini examples.....	19
8.4 Possible values for ModelName .....	20
8.5 Full Scripting example .....	21
8.6 Possible Error conditions and messages .....	22
<b>9. Updates.....</b>	<b>22</b>

## 1. Purpose of this document

Purpose of this document is to supplement the main "Universal Print Driver System Administrator's Guide" with additional and updated information since the main document was last released.

## 2. Target Driver Version

The information in this document applies to the following versions of the KONICA MINOLTA Universal Print Drivers.

- KONICA MINOLTA Universal PCL Version 2.50.0.0 (Later referred to as "MR5")
- KONICA MINOLTA Universal PS Version 2.50.0.0 (Later referred to as "MR5")
- KONICA MINOLTA Universal PCL Version 2.51.5.0 (Later referred to as "MR5+")
- KONICA MINOLTA Universal PS Version 2.51.6.0 (Later referred to as "MR5+")

## 3. New Functions

Since previous release of "Universal Print Driver System Administrator's Guide" (release 2.40 dated May 1, 2014) the following new functions were implemented:

- New and updated Model support
- Multi-language Support
- Switchable Device Selector
- MSI Distribution
- Full scripting Support

## 4. New and Updated Supported Models

Compared to previous release, the following new or updated models are now supported:

### 4.1 Newly Supported Models

#### 4.1.1 From MR5:

- KONICA MINOLTA C3100P
- KONICA MINOLTA C3110

#### 4.1.2 From MR5+:

No new model added

## 4.2 Updated Models

### 4.2.1 From MR5:

- KONICA MINOLTA C754e/C654e Function Version 5
- KONICA MINOLTA C554e/C454e/C364e/C284e/C224e Function Version 5
- KONICA MINOLTA 754e/654e Function Version 5
- KONICA MINOLTA 554e/454e/364e/284e/224e Function Version 5
- KONICA MINOLTA 4750/4050 Ver.A6F730G0236-999
- KONICA MINOLTA C3850/C3350 Ver.A3GN30G0206-999

### 4.2.2 From MR5+:

- KONICA MINOLTA C754e/C654e Function Version 6
- KONICA MINOLTA C554e/C454e/C364e/C284e/C224e Function Version 6
- KONICA MINOLTA 754e/654e Function Version 6
- KONICA MINOLTA 554e/454e/364e/284e/224e Function Version 6

## 5. Multi-Language Support

From MR5 onwards, Multi-Language is now supported as follows:

### 5.1 Languages

Following 27 languages are supported:

- **Main Languages:**

- English (EN), French (FR), Italian (IT), German (DE), Spanish (ES)
- Japanese (JA), Traditional Chinese (ZH-TW), Simplified Chinese (ZH-CN), Korean(KO)

- **Additional European Languages:**

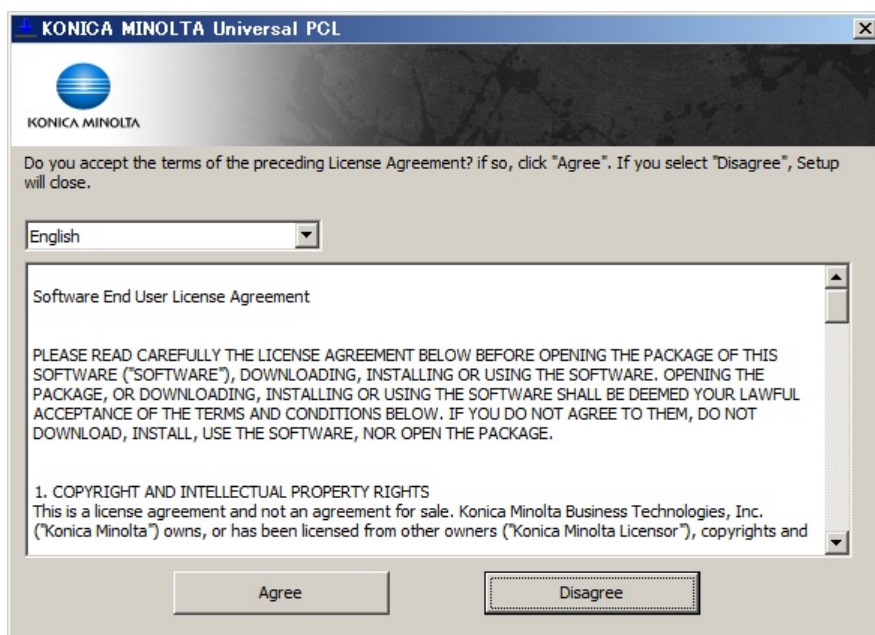
- Portuguese (PT), Dutch (NL), Danish (DA), Swedish (SV), Norwegian (NO), Finnish (FI),
- Czech (CS), Hungarian (HU), Polish (PL), Romanian (RO), Slovak (SK), Slovenian (SL)
- Greek (EL), Turkish (TR), Russian (RU), Catalan (CA), Basque (EU)

UPD is usually first released for Main languages only, then later updated to support additional European languages.

## 5.2 Switching between languages during Installation

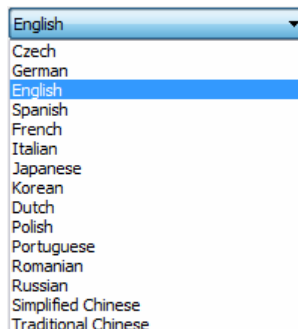
Depending on installation method, original language will be chosen as follows:

- **Method 1: Installing Using the Included Installer**
  - Execute "UPDSetup.exe".
  - By default, UPDSetup.exe will start in the same language as Windows User Interface (Windows Display Language) of the User.
  - Check the Software End User License Agreement



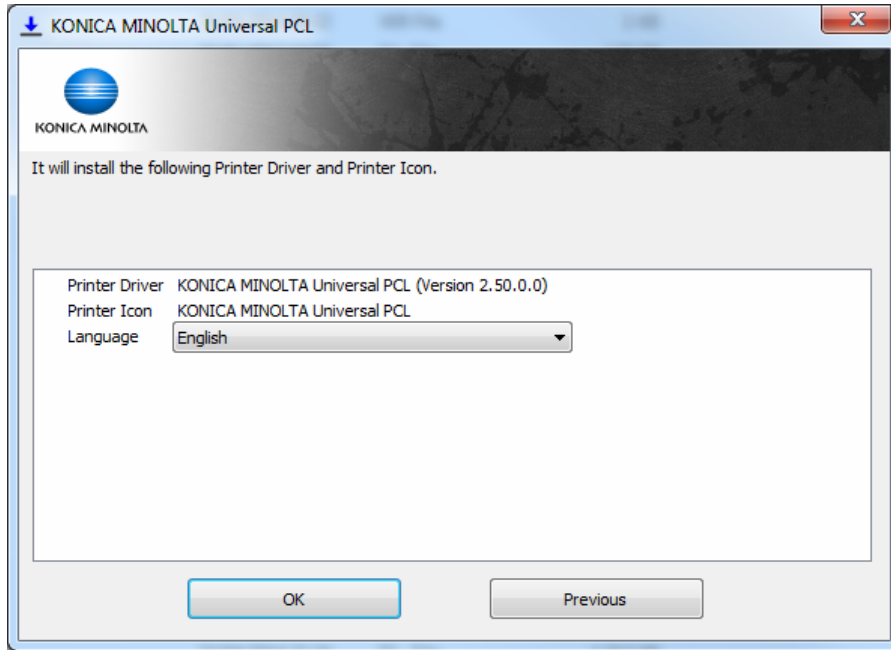
**Figure 5-2-1 Software End User License Agreement Dialog Box**

- On this screen, language can be chosen. This will affect not only the language of the License Agreement being displayed, but also language of the driver to be installed in the remaining screens of the installer.



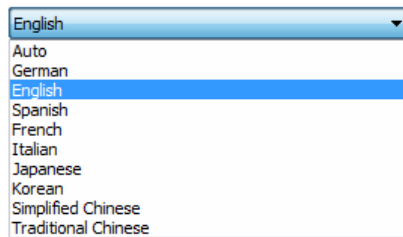
**Figure 5-2-2 License Agreement Language Selection**

- Once correct language is selected and License Agreement checked, click **Agree**
- Check the installation details



**Figure 5-2-3 Installation Details Confirmation Dialog Box**

- On this screen, language can be chosen. This will now affect the language of the driver that will be installed. “Auto” can also be selected, in which case driver will automatically select its language at runtime, according to the language of Windows (Windows Display Language) of the User.

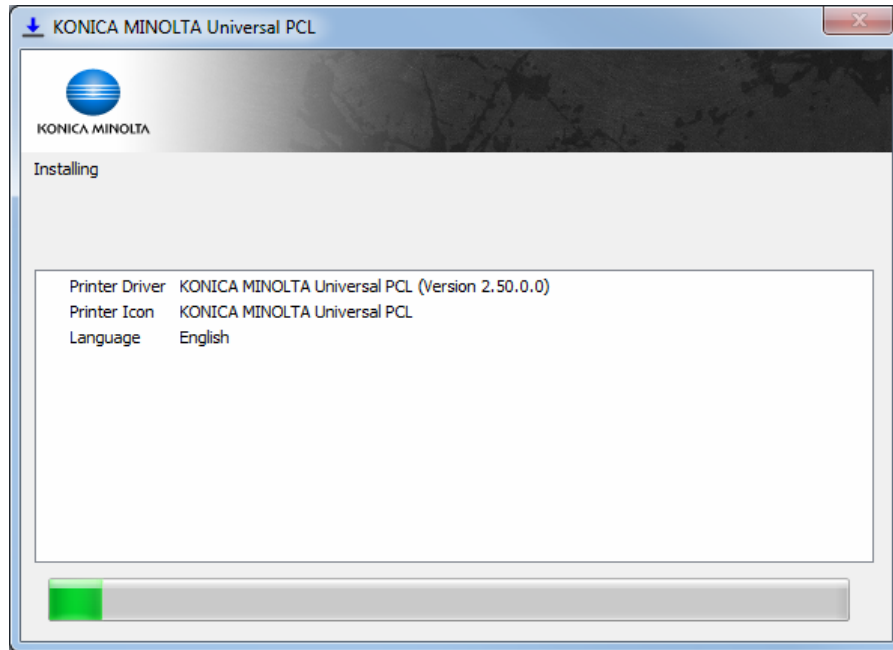


**Figure 5-2-4 Installation Details Language Selection**

- Once all details are confirmed, click **OK**

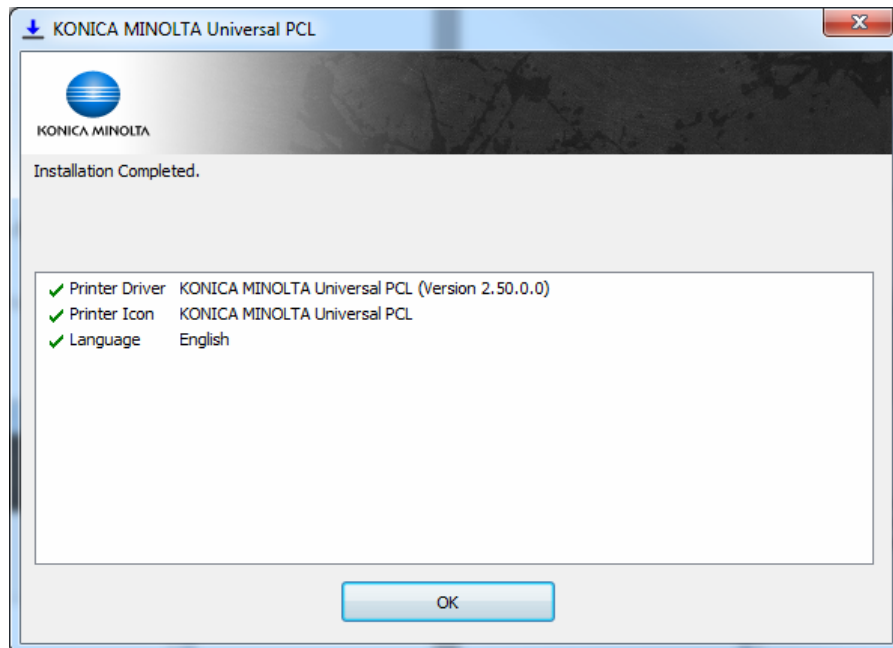


- The installer runs.



**Figure 5-2-5 Installing Dialog Box**

- When the dialog box below appears, installation is complete. Click **OK** to close the dialog box.



**Figure 5-2-6 Installation Completed Dialog Box**

- **Method 2: Installing Using standard Microsoft installation methods**

When using standard Microsoft Installation method (I.e. “Add Printer”, Point and Print, vbs scripts, Printui.dll), driver will automatically select its language at runtime, according to the language of Windows (Windows Display Language) of the User.

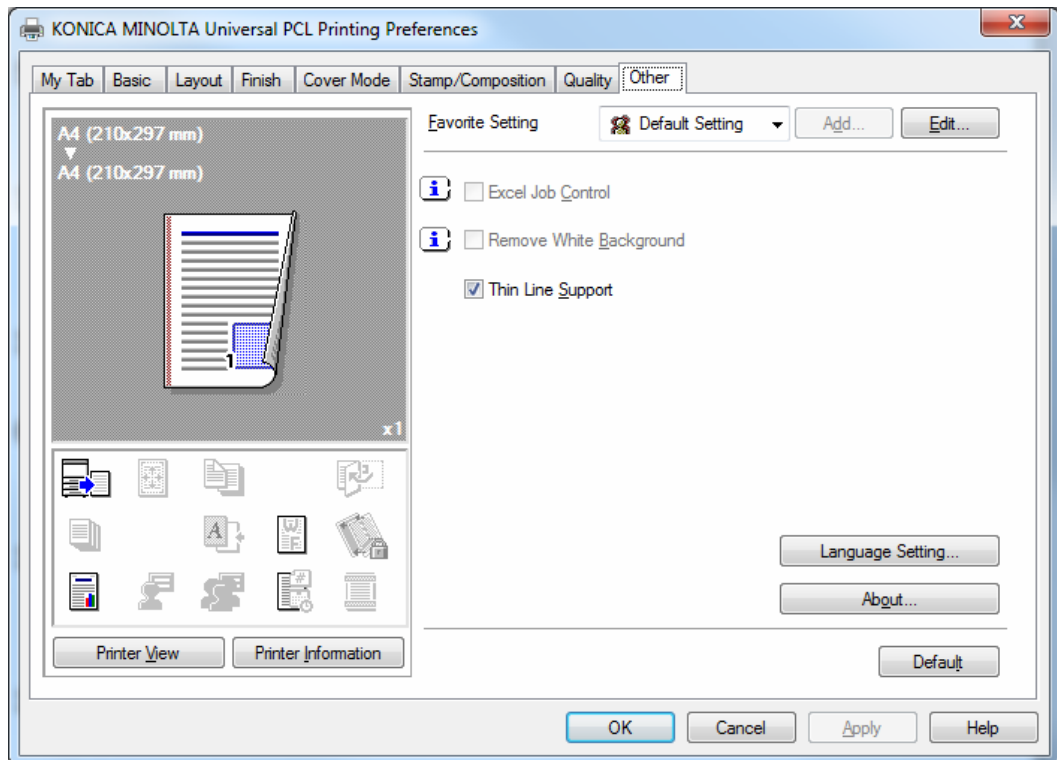
### 5.3 Switching between languages after Installation

After installation, language can always be changed using one of the following two methods:

- **Method 1: Using Printing Preferences**

- Open **Printing Preferences**

- Select **Other** Tab



**Figure 5-3-1 Printing Preferences – Other Tab**

- Click **Language Setting...**

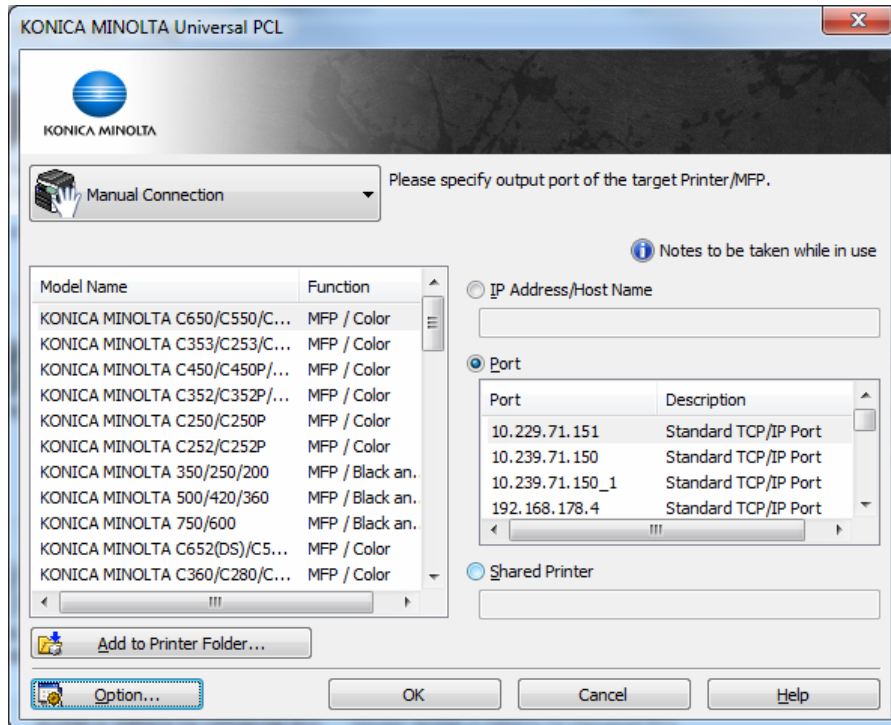


**Figure 5-3-2** Printing Preferences – Other – Language Setting Dialog Box

- On this screen, language can be chosen. “Auto” can also be selected, in which case driver will automatically select its language according to the language of Windows (Windows Display Language) of the User.
- Click **OK** to confirm **Language Setting** Dialog box
- Click **OK** to close **Printing Preferences**
- New language will be displayed next time Printing Preferences or Printing Properties will be opened.

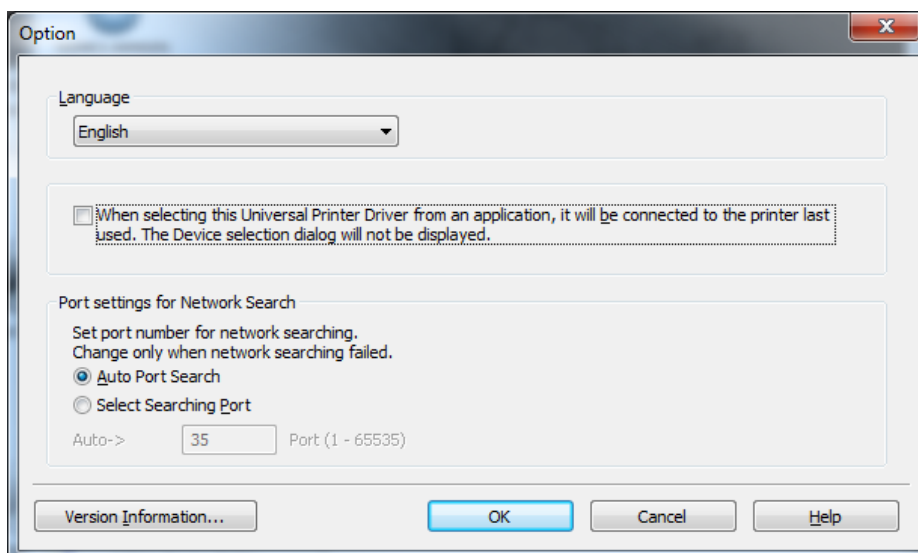
- **Method 2: Using Device Selector (When in Dynamic mode)**

- When Device Selector is shown



**Figure 5-3-3 Device Selector Dialog Box**

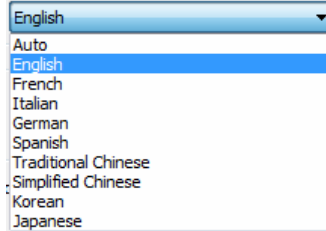
- Click **Option...**



**Figure 5-3-4 Device Selector – Option Dialog Box**

- In **Language** Pull Down Menu, language can be chosen. “Auto” can also be selected,

in which case driver will automatically select its language according to the language of Windows (Windows Display Language) of the User.



**Figure 5-3-2 Device Selector – Option Dialog Box – Language Pull Down Menu**

- Click **OK** to confirm **Language**

### 5.4 Preferred and Fallback languages

If Display language of Windows is not available in Universal Print Driver, best appropriate language will be chosen according to following table:

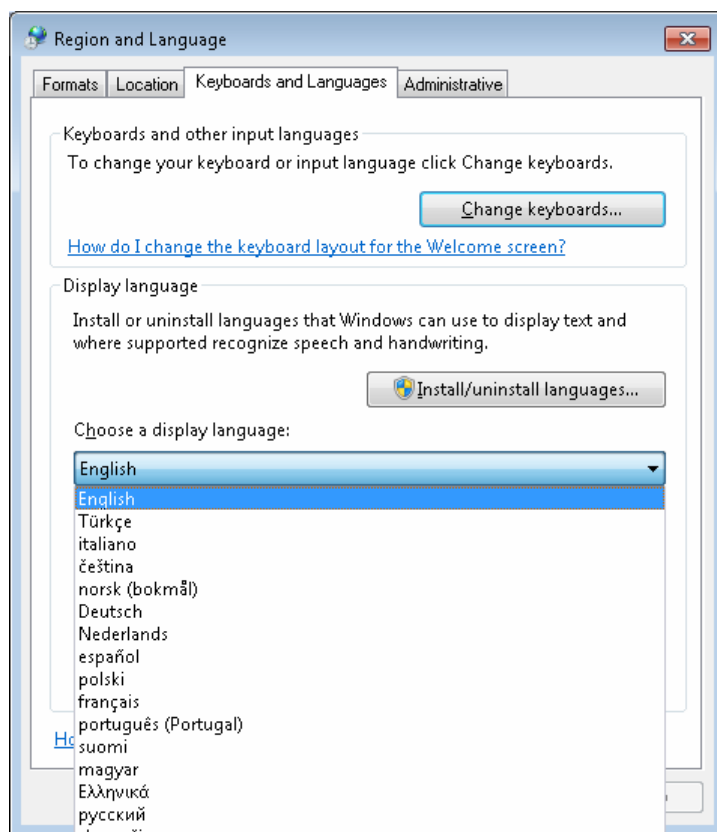
Windows Display Language	Preferred Language	1st Fallback Language <small>(When preferred language is not available)</small>	2nd Fallback Language <small>(When preferred or fallback are not available)</small>
English	English	n/a	n/a
French	French	English	English
German	German	English	English
Italian	Italian	English	English
Spanish	Spanish	English	English
Dutch	Dutch	English	English
Portuguese	Portuguese	English	English
Danish	Danish	English	English
Finnish	Finnish	English	English
Norwegian	Norwegian	English	English
Swedish	Swedish	English	English
Greek	Greek	English	English
Turkish	Turkish	English	English
Czech	Czech	English	English
Hungarian	Hungarian	English	English
Polish	Polish	English	English
Romanian	Romanian	English	English
Slovakian	Slovakian	Czech	English
Slovenian	Slovenian	English	English
Russian	Russian	English	English
Catalan	Catalan	Spanish	English
Euskera	Euskera	Spanish	English
Ukrainian	n/a	Russian	English
Serbo Croatian	n/a	English	English
Belarusian	n/a	Russian	English
Bulgarian	n/a	English	English
Albanian	n/a	Italian	English
Georgian	n/a	English	English
Lithuanian	n/a	Russian	English
Galician	n/a	Spanish	English
Irish	n/a	English	English
Latvian	n/a	Russian	English
Macedonian	n/a	English	English
Estonian	n/a	English	English
Frisian	n/a	Dutch	English
Welsh	n/a	English	English
Ossetian	n/a	Russian	English
Maltese	n/a	English	English
Luxembourgish	n/a	French	English
Icelandic	n/a	English	English
Komi	n/a	Russian	English
Scottish Gaelic	n/a	English	English

**Figure 5-4-1 Display Language, Preferred and Fallback languages**

## 5.5 Windows Display Language

Windows Display Language is:

- By Default: corresponding to the language of each localized version of Windows (e.g. French Windows is using French as Display Language, German Windows is using German as display language)
- By Language Pack: since Windows Vista, any Display Language can be setup on any localized Windows using Control Panel -> Clock, Language and Region -> Change Display language, as follows:



**Figure 5-5-1 Windows Display language Dialog Box**

## 5.6 Notes and Limitations

Following functions are not supported by language switching:

- Media names in the 'Paper available' section in tab 'General' of the property window.
- Media type names as displayed in the printer window of some applications that are started by PS driver.
- Switching the displayed language is not possible from within some applications, (e.g. Adobe)

## 6. Switchable Device Selector

From MR5 onwards, **Device Selector** can now be switched **On** or **Off** depending on Installation method used by default, and after installation.

### 6.1 Switching Device Selector during Installation

- **Method 1: Using the Included Installer**

When using UPDSetup.exe, **Device Selector** will be setup to **On** by default, and UPD will use **Dynamic Mode**.

*Please refer to main “Universal Print Driver System Administrator’s Guide” for detailed explanation on **Dynamic Mode** and instructions on how to use **Device Selector**.*

- **Method 2: Using standard Microsoft installation methods**

When using standard Microsoft Installation method (I.e. “Add Printer”, Point and Print, vbs scripts, Printui.dll), **Device Selector** will be setup to **Off** by default and UPD will use **Traditional Mode**. Since UPD needs to determine the correct child to use for each queue, SNMP communication will be used on the port where the UPD driver is installed.

If UPD driver is installed in Point and Print configuration, client will use same child as used on the Server. In the case communication cannot be established (Device Off, Printing to follow me, Network restrictions, ...) **Model Selector** dialog will be prompted to allow User to retry or select manually which child should be used.

This dialog will be shown only once, during installation.

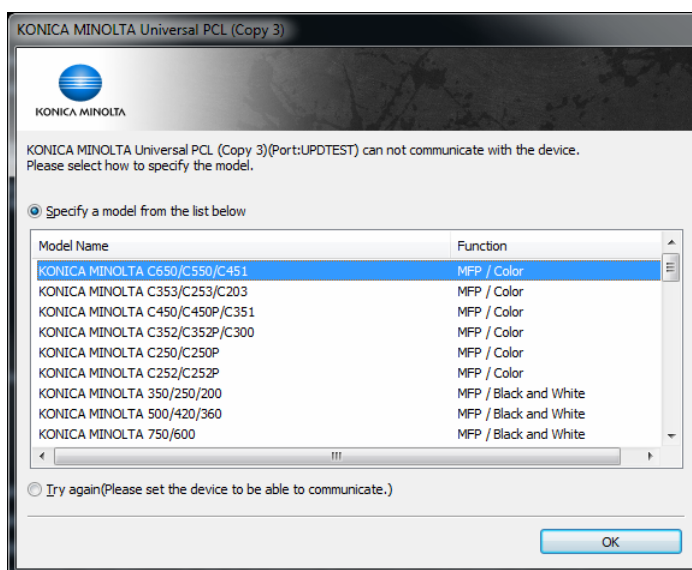
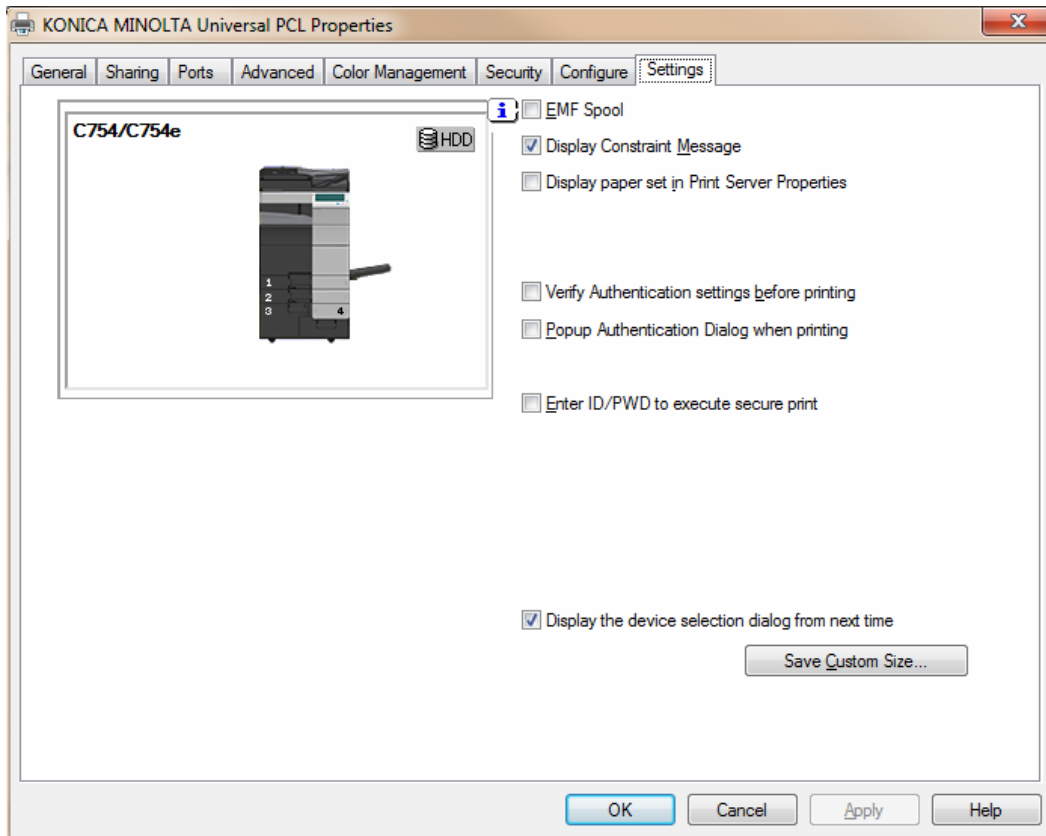


Figure 6-1-1 Model Selector

## 6.2 Switching Device Selector after Installation (MR5)

Independently from Installation method used, Device Selector can be switched **On** or **Off** after installation.

- Open **Printer Properties**
- Select **Settings** Tab



**Figure 6-2-1** Printing Properties – Settings Tab

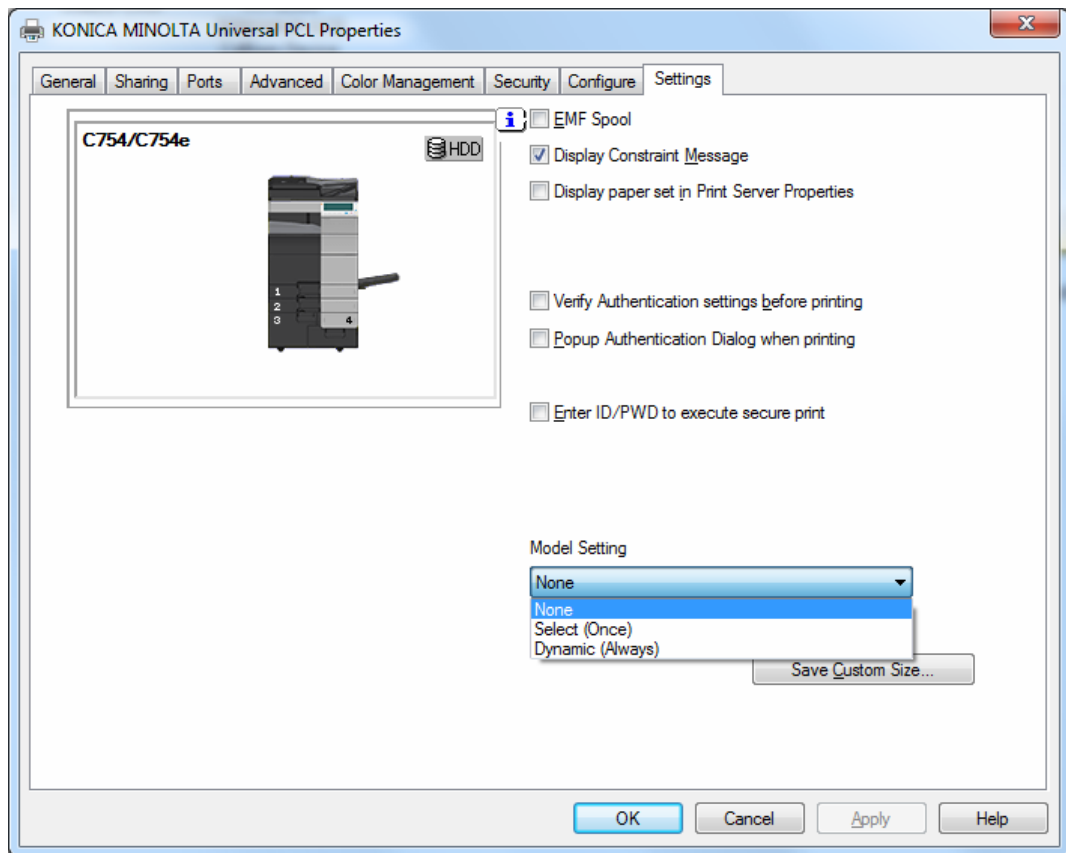
- Tick the **Display the device selection dialog from next time** box:
    - On Will switch **Device Selector** on and use **Dynamic Mode**
    - Off Will switch **Device Selector** off and use **Traditional Mode**
- This can also be used to change the device, by switching temporarily to **Dynamic mode** (On), select another model, then switch back to **Traditional mode** (Off)



## 6.3 Switching Device Selector after Installation (MR5+ and above)

Independently from Installation method used, Model Selection can be configured as Traditional (Device Selector Off), Dynamic (Device Selector always On) or changed once by Model Selector.

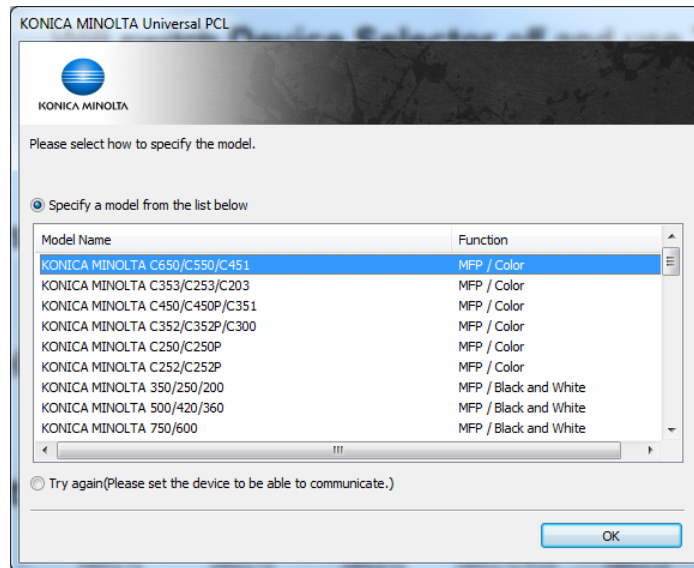
- Open **Printer Properties**
- Select **Settings** Tab



**Figure 6-3-1** Printing Properties – Settings Tab

- In the **Model Setting** pull-down menu, select:
  - None Will switch **Device Selector** off and use **Traditional Mode**
  - Select (once) Will open **Model Selector** to allow changing Model, then switch back to None (**Traditional mode**) automatically
  - Dynamic (Always) Will switch **Device Selector** on and use **Dynamic Mode**

- If “Select (Once)” was selected, **Model Selector** dialog will appear next time **Printer Preferences** or **Printer Properties** is opened:



**Figure 5-1-1 Model Selector**

- Select the new Model to be used for this queue then click **OK** for confirming.

## 7. MSI distribution

From MR5 onwards, Universal Print Driver is also available as MSI package, for facilitating deployment in Corporate environments.

MSI packages can be obtained from <https://www.konicaminolta.eu/dlark>

## 8. Full Scripting Support

From MR5+ onwards, installation of UPD can now fully be scripted, including Model selection and Model setting for each queue.

As explained in chapter 6, during standard Microsoft Installation (I.e. “Add Printer”, Point and Print, vbs scripts, Printui.dll), UPD would normally uses SNMP communication on the port where the UPD driver is installed in order to determine the correct child to use for each queue.

This might not always be desired, since it requires device to be available on the network at the time of UPD installation, or otherwise UPD would prompt **Model Selector** dialog to allow User to select manually which child should be used. This would break any attempt to automate multiple queue installation by Scripting.

## 8.1 General Scripting Procedure

In order to fully script installation of UPD queues, the following procedure should be used.

- a. Create **Port** as needed
- b. Create C: \KMUPDcache\InstCFG.ini with the configuration for the queue to be created
- c. Add Queue (Queue will be added and configured according to InstCFG.ini)
- d. Check possible error in C: \KMUPDcache\AddPrinterError.log
- e. Repeat from a. from next queue

## 8.2 InstCFG.ini format

InstCFG.ini is a text file located in the C: \KMUPDcache\ folder, with the following contents:

"PrintQueueName", "Model Name", "SelectMode"

**PrintQueueName** is the name of the Queue that needs to be configured

**Model Name** is the Model of UPD that should be installed (Refer to section 8.4 for values)

**SelectMode** is the Model Setting that should be configured for this queue, with:

- None Will switch **Device Selector** off and use **Traditional Mode**
- Select Will open **Model Selector** after installation (First time **Printer Preferences** or **Printer Properties** is opened by User) to allow selecting Model, then switch back to None (**Traditional mode**) automatically
- Dynamic Will switch **Device Selector** on and use **Dynamic Mode**

This correspond to **Model Setting** for this queue, as described in section 6.3

## 8.3 InstCFG.ini examples

"MyQueue1", "KONICA MINOLTA C754(e)/C654(e)", "None"

Will request UPD to configure the queue **MyQueue1** for the model **KONICA MINOLTA C754(e)/C654(e)** and **Traditional mode**

"MyQueue2", "Baseline", "Dynamic"

Will configure UPD to configure the queue **MyQueue2** for the model **Baseline** (Base driver) and **Dynamic mode**

## 8.4 Possible values for ModelName

"Baseline"	"KONICA MINOLTA A3 common"
"KONICA MINOLTA A4 common"	"KONICA MINOLTA 20"
"KONICA MINOLTA 20P"	"KONICA MINOLTA 25e"
"KONICA MINOLTA 40P"	"KONICA MINOLTA 42/36"
"KONICA MINOLTA 163/211"	"KONICA MINOLTA 195/215/235"
"KONICA MINOLTA 195/215/235"	"KONICA MINOLTA 350/250/200"
"KONICA MINOLTA 362/282/222"	"KONICA MINOLTA 423/363/283/223"
"KONICA MINOLTA 500/420/360"	"KONICA MINOLTA 501/421/361"
"KONICA MINOLTA 554e/454e/364e/284e/224e"	"KONICA MINOLTA 652/602/552/502"
"KONICA MINOLTA 750/600"	"KONICA MINOLTA 751/601(2.0.0.UPD_03)"
"KONICA MINOLTA 751/601(1.0.3.UPD_03)"	"KONICA MINOLTA 754(e)/654(e)"
"KONICA MINOLTA 4020/3320"	"KONICA MINOLTA 4700P/4000P/3300P"
"KONICA MINOLTA 4750/4050"	"KONICA MINOLTA C20"
"KONICA MINOLTA C20P"	"KONICA MINOLTA C25"
"KONICA MINOLTA C30P/C31P"	"KONICA MINOLTA C35"
"KONICA MINOLTA C35P/mc4750"	"KONICA MINOLTA C250/C250P"
"KONICA MINOLTA C252/C252P"	"KONICA MINOLTA C352/C352P/C300"
"KONICA MINOLTA C353/C253/C203"	"KONICA MINOLTA C360/C280/C220"
"KONICA MINOLTA C450/C450P/C351"	"KONICA MINOLTA C554(e)/C454(e)/C364(e)/C284(e)/C224(e)"
"KONICA MINOLTA C650/C550/C451"	"KONICA MINOLTA C652(DS)/C552(DS)/C452"
"KONICA MINOLTA C754(e)/C654(e)"	"KONICA MINOLTA C3100P"
"KONICA MINOLTA C3110"	"KONICA MINOLTA C3850/C3350"
"KONICA MINOLTA mc4650"	"KONICA MINOLTA mc4695MF"
"KONICA MINOLTA mc5450"	"KONICA MINOLTA mc5550/mc5570"
"KONICA MINOLTA mc5650/mc5670"	"KONICA MINOLTA mc8650"
"KONICA MINOLTA pp4650/pp5650"	"KONICA MINOLTA pp4650/pp5650"

## 8.5 Full Scripting example

```

REM -----
REM Edit this section as needed
SET MYIP=10.239.71.150
SET MYPOR=TestPort
SET MYQUEUE="Test Printer"
SET MYMODEL="KONICA MINOLTA C754(e)/C654(e)"
SET UPDDRI VERPATH=C:\DRIVERS\UPD\PS
REM -----
REM Following command will add (-a) a Port named %MYPOR% (-r) on IP %MYIP% (-h),
REM of type raw (-o), using port 9100 (-n), with SNMP enabled (-me),
REM Community name Public (-y) and SNMP index 1 (-i)
REM For detailed information about prnport.vbs please run prnport.vbs without parameters
cscript C:\Windows\System32\Printing_Admin_Scripts\en-US\prnport.vbs -a -r %MYPOR%
-h %MYIP% -o raw -n 9100 -me -y public -i 1
REM -----
REM Following command will create InstCFG.ini for %MYQUEUE%, %MYMODEL% and traditional mode
ECHO %MYQUEUE%, %MYMODEL%, "None" > C:\KMUPDcache\InstCFG.ini
REM -----
REM Following command will install printer using INF file (/i f), creating a queue %MYQUEUE%,
REM using %UPDDRI VERPATH%\KOB_A__.inf INF file (/f), on port %MYPOR% (/r),
REM using model name KONICA MINOLTA Universal PS (/m)
REM For detailed information about printui.dll please, rundll32 printui.dll,PrintUIEntry
rundll32 printui.dll,PrintUIEntry /i f /b %MYQUEUE% /f %UPDDRI VERPATH%\KOB_A__.inf
/r %MYPOR% /m "KONICA MINOLTA Universal PS"
REM -----

```

## 8.6 Possible Error conditions and messages

<Date> <Time>:E001 <PrintQueueName>:"SelectMode" in InstCFG.ini is invalid! "None" SelectMode is selected for <PrintQueueName>.
<Date> <Time>:E002 <PrintQueueName>:"ModelName" in InstCFG.ini is invalid! "Baseline" ModelName is selected for <PrintQueueName>.
<Date> <Time>:E003 <PrintQueueName>:Device not found! "Baseline" ModelName is selected for "ModelName".
<Date> <Time>:E004 <PrintQueueName>:"SelectMode" in InstCFG.ini is missing! "None" SelectMode is selected for <PrintQueueName>.
<Date> <Time>:E005 <PrintQueueName>:"ModelName" in InstCFG.ini is missing! "Baseline" ModelName is selected for <PrintQueueName>.
<Date> <Time>:E006 <PrintQueueName>:"PrintQueueName" in InstCFG.ini is missing! "Baseline" ModelName is selected for <PrintQueueName>.

## 9. Updates

Latest / updated version of this document can always be found at:

<https://www.konicaminolta.eu/dlark>