
magicolor® 2490MF

Reference Guide

4556-9599-01A

1800800-001B

Copyright Notice

The digitally encoded software and publication included with your machine are Copyrighted © 2006 by KONICA MINOLTA BUSINESS TECHNOLOGIES, INC., Marunouchi Center Building, 1-6-1 Marunouchi, Chiyoda-ku, Tokyo, 100-0005, Japan. All Rights Reserved.

This software may not be reproduced, modified, displayed, transferred, or copied in any form or in any manner or on any media, in whole or in part, without the express written permission of KONICA MINOLTA BUSINESS TECHNOLOGIES, INC.

No part of this publication may be reproduced, stored in a retrieval system, or transmitted in any form or by any means, electronic, mechanical, photocopying, recording, or otherwise, without the prior written permission of KONICA MINOLTA. The information contained in this guide is intended for use with the KONICA MINOLTA magicolor 2490MF machines only.

Trademarks

KONICA MINOLTA and the KONICA MINOLTA logo are trademarks or registered trademarks of KONICA MINOLTA HOLDINGS, INC.

magicolor and PageScope are trademarks or registered trademarks of KONICA MINOLTA BUSINESS TECHNOLOGIES, INC.

All other trademarks and registered trademarks are the property of their respective owners.

Notice

KONICA MINOLTA BUSINESS TECHNOLOGIES, INC. reserves the right to make changes to this guide and to the equipment described herein without notice. Considerable effort has been made to ensure that this manual is free of inaccuracies and omissions. However, KONICA MINOLTA BUSINESS TECHNOLOGIES, INC. makes no warranty of any kind including, but not limited to, any implied warranties of merchantability and fitness for a particular purpose with regard to this manual.

KONICA MINOLTA BUSINESS TECHNOLOGIES, INC. assumes no responsibility for, or liability for, errors contained in this manual or for incidental, special, or consequential damages arising out of the furnishing of this manual, or the use of this manual in operating the equipment, or in connection with the performance of the equipment when so operated.

SOFTWARE LICENSE AGREEMENT

This package contains the following materials provided by Konica Minolta Business Technologies, Inc. (KMBT): software included as part of the printing system, the digitally-encoded machine-readable outline data encoded in the special format and in the encrypted form ("Font Programs"), other software which runs on a computer system for use in conjunction with the Printing Software ("Host Software"), and related explanatory written materials ("Documentation"). The term "Software" shall be used to describe Printing Software, Font Programs and/or Host Software and also include any upgrades, modified versions, additions, and copies of the Software.

The Software is being licensed to you under the terms of this Agreement.

KMBT grants to you a non-exclusive sublicense to use the Software and Documentation, provided that you agree to the following:

1. You may use the Printing Software and accompanying Font Programs for imaging to the licensed output device(s), solely for your own internal business purposes.
 2. In addition to the license for Font Programs set forth in Section 1 ("Printing Software") above, you may use Roman Font Programs to reproduce weights, styles, and versions of letters, numerals, characters and symbols ("Typefaces") on the display or monitor for your own internal business purposes.
 3. You may make one backup copy of the Host Software, provided your backup copy is not installed or used on any computer. Notwithstanding the above restrictions, you may install the Host Software on any number of computers solely for use with one or more printing systems running the Printing Software.
 4. You may assign its rights under this Agreement to an assignee of all of Licensee's right and interest to such Software and Documentation ("Assignee") provided you transfer to Assignee all copies of such Software and Documentation Assignee agrees to be bound by all of the terms and conditions of this Agreement.
 5. You agree not to modify, adapt or translate the Software and Documentation.
 6. You agree that you will not attempt to alter, disassemble, decrypt, reverse engineer or decompile the Software.
 7. Title to and ownership of the Software and Documentation and any reproductions thereof shall remain with KMBT and its Licensor.
 8. Trademarks shall be used in accordance with accepted trademark practice, including identification of the trademark owner's name. Trademarks can only be used to identify printed output produced by the Software. Such use of any trademark does not give you any rights of ownership in that trademark.
 9. You may not rent, lease, sublicense, lend or transfer versions or copies of the Software that the Licensee does not use, or Software contained on any unused media, except as part of the permanent transfer of all Software and Documentation as described above.
 10. In no event will KMBT or its licensor be liable to you for any consequential, incidental INDIRECT, PUNITIVE or special damages, including any lost profits or lost saving, even if KMBT has been advised of the possibility of such damages, or for any claim by any third party. KMBT or its licensor disclaims all warranties with regard to the software, express or implied, including, without limitation implied warranties of merchantability, fitness for a particular purpose, title and non-infringement of third party rights. Some states or jurisdictions do not allow the exclusion or limitation of incidental, consequential or special damages, so the above limitations may not apply to you.
-

11. Notice to Government End Users: The Software is a “commercial item,” as that term is defined at 48 C.F.R.2.101, consisting of “commercial computer software” and “commercial computer software documentation,” as such terms are used in 48 C.F.R. 12.212. Consistent with 48 C.F.R. 12.212 and 48 C.F.R. 227.7202-1 through 227.7202-4, all U.S. Government End Users acquire the Software with only those rights set forth herein.
 12. You agree that you will not export the Software in any form in violation of any applicable laws and regulations regarding export control of any countries.
-

Contents

1 Using Local Setup Utility (LSU)	1
About Local Setup Utility (LSU)	2
LSU Operating Environment	2
Outline of Setup	3
Installing LSU	3
Starting Up LSU	4
Main LSU Window	5
Connecting to the Machine	6
Downloading Information from the Machine	6
Programming a One-touch Dial Number	6
Editing a One-touch Dial Number	7
Programming a Speed Dial Number	7
Editing a Speed Dial Number	9
Programming a Group Dial Number	9
Editing a Group Dial Number	10
Printing the List of One-touch Dial, Speed Dial and Group Dial Numbers	10
Saving Settings to a Computer	10
Saving Settings to a Fax Machine	11
Specifying Utility Mode Settings	11
Setting the Machine Information	14

Checking the Total Counter	14
Checking the Configuration Page	15
Uninstalling LSU	15
2 Understanding the Network Configuration Menus	17
NETWORK SETTING Menu	18
Location within the Configuration Menu	18
Accessing the Network Setting Menu	19
Using the Network Setting Menu Options	19
IP Address	19
Subnet Mask	20
Gateway	21
DNS Configure	22
3 Network Printing	23
Network Connection	24
Theory	24
Making the Connection	25
Ethernet Interface	25
Using DHCP	25
Setting the Address Manually	26
Network Printing	29
BOOTP	29
DHCP	29
DNS	29
HTTP	30
Port 9100	30
SMTP	30
TCP/IP	30
4 Using PageScope Web Connection	31
About PageScope Web Connection	32
Display Language	32
Requirements	32
Setting Up the Printer Web Page	33
Determining the Printer Name	33
Setting Up Your Browser Software	33
Internet Explorer (version 6.0 for Windows)	34
Netscape Navigator (version 7.1)	35
Understanding the PageScope Web Connection Window	36
Navigation	36
Current Status	37
User Mode	37
Administrator Mode	37

Configuring the Printer 38

System Page 38

Summary (shown above) 38

Device Information 39

Details 40

Preference 44

Save Setting 46

Maintenance 47

Online Assistance 50

Fax/E-mail 52

One-Touch Dial Setting (shown above) 52

Speed Dial Setting 57

Group Dial Setting 61

Fax Configuration 63

Downloading/Uploading Destination List 71

Network 72

Summary (shown above) 72

TCP/IP 73

E-mail 75

Using Local Setup Utility (LSU)

1

About Local Setup Utility (LSU)

By installing Local Setup Device (LSU) onto a computer connected to the machine, you can change machine settings and check the counters and machine status from the computer.


The following operations can be performed using LSU.

- Save machine one-touch dialing, speed dialing and group dialing information onto a computer
- Change machine one-touch dialing, speed dialing, and group dialing information
- Change Utility mode settings
- Check the counters
- Check the configuration page

LSU Operating Environment

The following environment is required in order to install LSU onto a computer.

Item	Operating environment
Operating system	Windows 98 Second Edition, Windows Me, Windows 2000 Professional, Windows XP
Processor	Pentium II or faster
Memory	Memory capacity recommended for the operating system. There should be enough memory for the operating system and the applications used.
Available hard disk space	100 MB or more
Web browser	Internet Explorer version 5.0 or later

 Use a USB cable with an A-type connector (4-pin male) and a B-type connector (4-pin male). We recommend that the USB cable be no more than 3 meters (10 feet) long.

Outline of Setup

Before using LSU, the machine must be connected to the computer, and LSU must be installed on the computer.

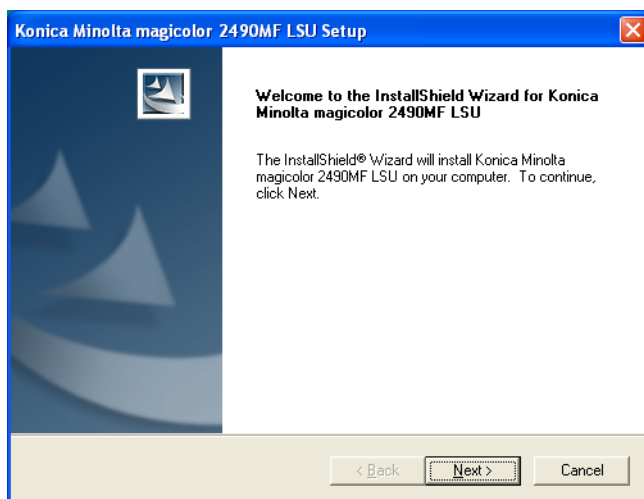
- 1 Connect the machine to the computer.
- 2 Install the TWAIN driver and printer driver included with the machine.
- 3 Install LSU onto the computer.



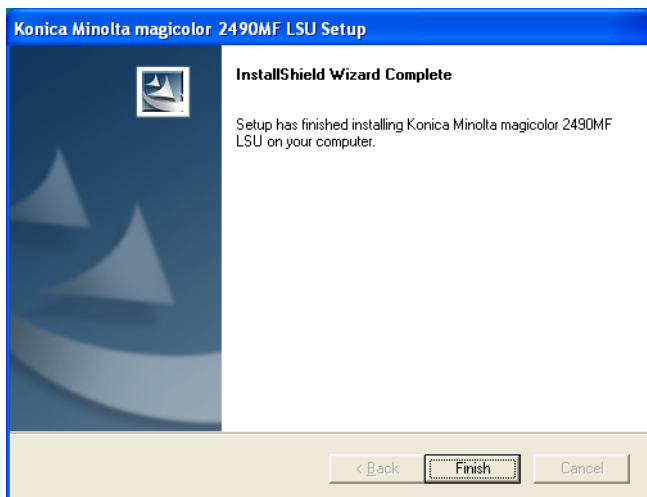
For details on the installation procedure, refer to “Installing LSU” on page 3.

Installing LSU

- 1 Insert Applications CD-ROM in your CD/DVD-ROM drive.
- 2 Select the language.
- 3 From the Application Setup dialog, select “LSU”.
The installer starts up.
- 4 Select the desired installation language.
- 5 Click the [Next] button, and then follow the on-screen instructions.



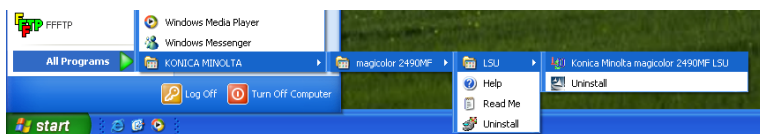
- 6 When a message appears, indicating that the installation of LSU is finished, click the [Finish] button.



The installation of LSU is completed.

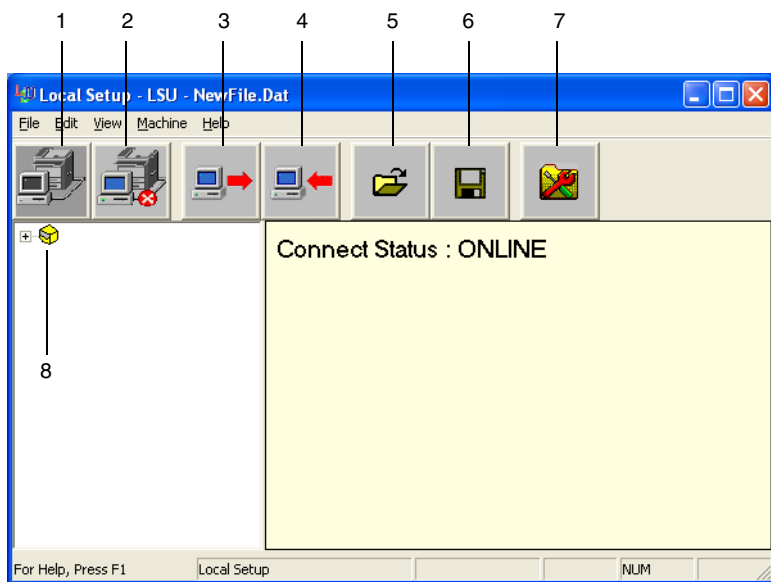
Starting Up LSU


- 1 Click the Start button, point to "Programs (Windows XP: **All Programs**)", "KONICA MINOLTA", "magicolor 2490MF", "LSU", and then click "Konica Minolta magicolor 2490MF LSU".



The main window of LSU appears.

Main LSU Window



No.	Name	Description
1	Connect To Machine button	Click this button to connect the machine with the computer.
2	Disconnect button	Click this button to cut the connection between the machine and the computer.
3	Upload button	Click this button to send the settings file to the machine.
4	Download button	Click this button to send the machine's settings to the computer.
5	Open button	Click this button to open the settings file.
6	Save button	Click this button to save the settings file.
7	Menu button	Click this button to display the Menu dialog box.
8	Machine icon	Click  beside the machine icon to display the machine one-touch dialing, speed dialing and group dialing settings.

Connecting to the Machine

- 1 Click .

A connection can also be created by clicking “Connect” on the “Machine” menu.

When LSU is connected to the machine, “Connect Status: ONLINE” appears.




While operations are being performed in LSU, the machine cannot be operated from its control panel.

Downloading Information from the Machine

- 1 Click .

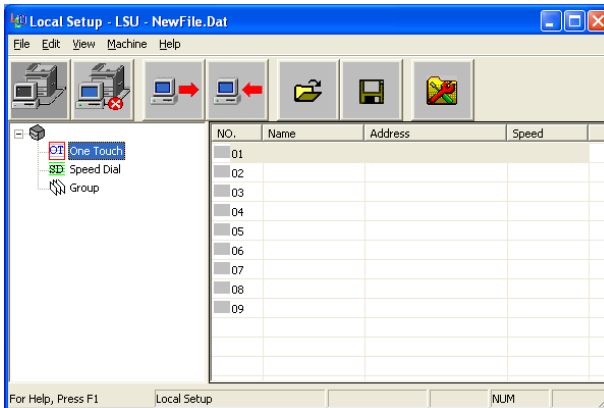
The information can also be downloaded by clicking “Download” on the “Machine” menu.

Programming a One-touch Dial Number

- 1 Click  beside the machine icon, and then click “One Touch”.
- 2 From the list that is displayed, double-click the one-touch dial number to be programmed.



A maximum of 9 one-touch dial numbers can be programmed.




- 3 In the Register One Touch dialog box for the selected number, specify the desired settings.



Only numbers and letters can be typed in.

- 4 Click the [OK] button.
Programming of the one-touch dial number is completed.

Editing a One-touch Dial Number

- 1 Click  beside the machine icon, and then click “One Touch”.
- 2 From the list that is displayed, double-click the one-touch dial number to be edited.




If a programmed one-touch dial number is selected, the information can be changed.



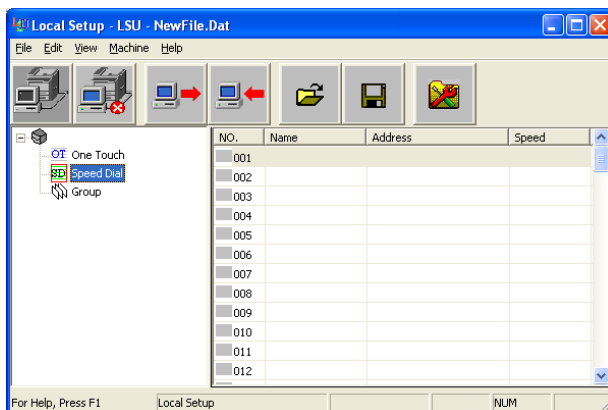
When editing the information, the “Cut”, “Copy”, “Paste” and “Delete” commands on the “Edit” menu can be selected.

Programming a Speed Dial Number

- 1 Click  beside the machine icon, and then click “Speed Dial”.
- 2 From the list that is displayed, double-click the speed dial number to be programmed.



A maximum of 100 speed dial numbers can be programmed.




- 3 In the Register Speed Dial dialog box for the selected number, specify the desired settings.



Only numbers and letters can be typed in.

- 4 Click the [OK] button.
Programming of the speed dial number is completed.

Editing a Speed Dial Number

- 1 Click  beside the machine icon, and then click “Speed Dial”.
- 2 From the list that is displayed, double-click the speed dial number to be edited.




If a programmed speed dial number is selected, the information can be changed.



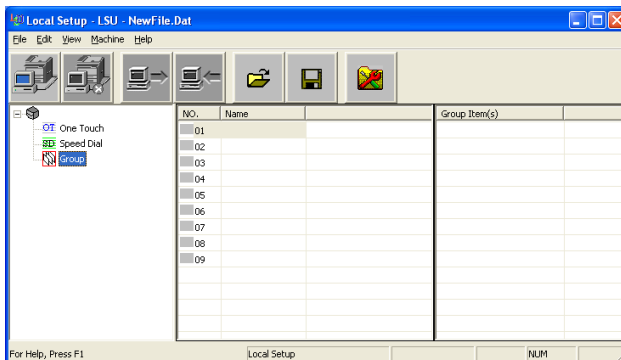
When editing the information, the “Cut”, “Copy”, “Paste” and “Delete” commands on the “Edit” menu can be selected.



Programming a Group Dial Number

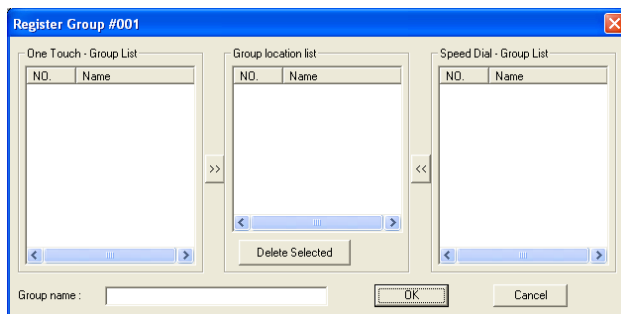
- 1 Click  beside the machine icon, and then click “Group”.
- 2 From the list that is displayed, double-click the group dial number to be programmed.



A maximum of 9 group dial numbers can be programmed.



- 3 In the Register Group dialog box for the selected number, select a number to programmed in the group, and then click  or .



- 4 Type in the name of the group.
- 5 Click the [OK] button.
Programming of the group is completed.



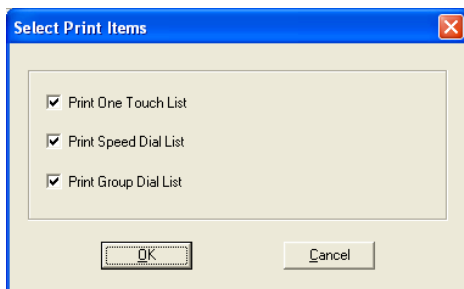
Program group dialing after programming one-touch dial and speed dial numbers.

Editing a Group Dial Number

- 1 From the list that is displayed, double-click the group dial number to be edited.
If a programmed group dial number is selected, the information can be changed.


Printing the List of One-touch Dial, Speed Dial and Group Dial Numbers

- 1 On the “File” menu, click “Print”.
The following dialog box appears.



- 2 Select the check box for the items to be printed, and then click the [OK] button.

Saving Settings to a Computer

- 1 Click  to send the settings to the machine.



The settings can also be saved by clicking “Save As” on the “File” menu.

- 2 Specify the folder where the file is to be saved, and then type in the name of the file.
- 3 Click the [Save] button.

Saving Settings to a Fax Machine

1 Click .

The settings can also be saved to the machine by clicking “Upload” on the “Machine” menu.

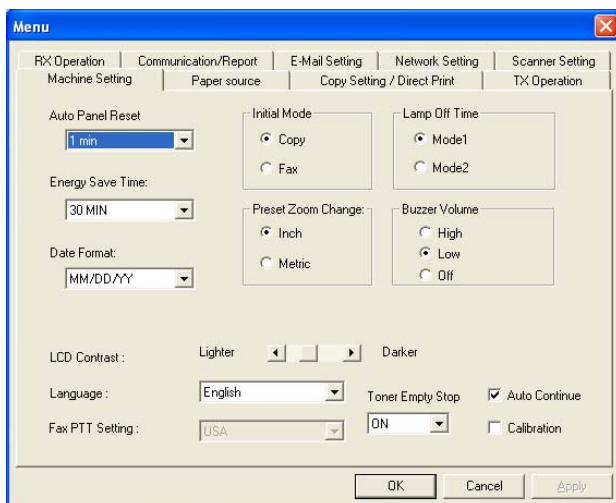
Specifying Utility Mode Settings

Utility mode settings specified from the machine's Control panel can be specified from the Utility Setting dialog box of LSU.

1 Click .

This dialog box can also be displayed by clicking “Menu” on the “Machine” menu.

The Menu dialog box appears.



The following parameters can be specified from LSU.

Menu	Function
Machine Setting	Auto Panel Reset
	Energy Save Time
	Date Format
	LCD Contrast
	Language
	Fax PTT Setting
	Initial Mode
	Lamp Off Time
	Preset Zoom Change
	Buzzer Volume
	Toner Empty Stop
	Auto Continue
	Calibration
Paper source	Tray1 Paper
	Tray2 Paper
Copy Setting/Direct Print	Paper Priority
	Mode
	Density Level (A)
	Density Level (M)
	Collate
	Quality
	Direct Print
TX Operation	Scan Contrast
	Resolution
	Header
RX Operation	Memory RX Mode
	Reduction RX
	RX Print Mode
	RX Mode
	No. of rings
	Footer
	Select Tray

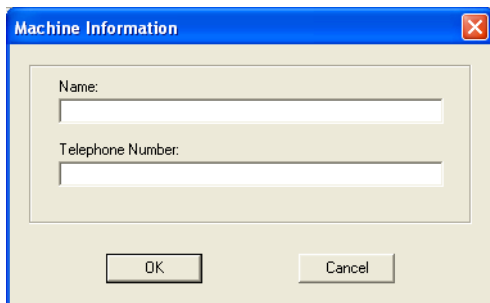
Menu	Function
Communication/Report	Tone/Pulse
	Line Monitor
	PSTN/PBX
	Activity Report
	Tx Result Report
	Rx Result Report
E-mail Setting	Sender Name
	E-Mail Address
	SMTP Server Address
	SMTP Port No.
	SMTP Timeout
	Default Subject
	TEXT Insert
Network Setting	IP Address
	Subnet Mask
	Gate Way
	DNS Configuration
Scanner Setiing	Resolution
	Image Format
	Coding Method



While operations are being performed in LSU, the machine cannot be operated from its Control panel.

Setting the Machine Information

- 1 On the “Machine” menu, click “Property”.
The Machine Information dialog box appears.



The Machine Information dialog box has a blue title bar with the text "Machine Information" and a close button. The main area is light beige and contains two text input fields. The first field is labeled "Name:" and the second is labeled "Telephone Number:". Below the fields are two buttons: "OK" and "Cancel".

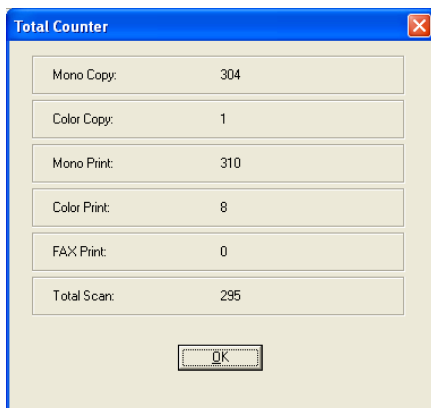
- 2 Set the Name and Telephone Number.



The set Name and Telephone Number are printed in the header of sent faxes.

Checking the Total Counter

- 1 On the “Machine” menu, click “Total Counter”.
The Total Counter dialog box appears.



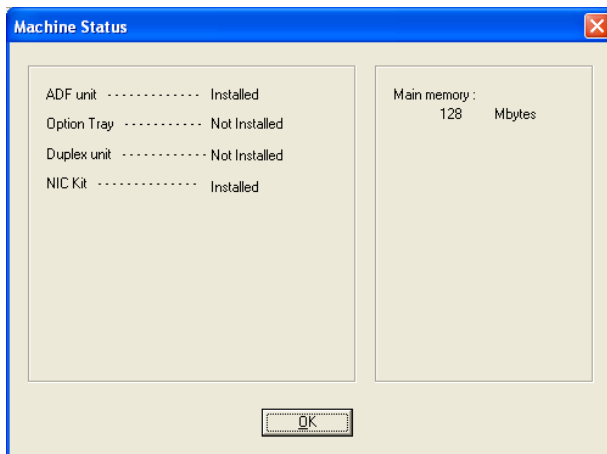
The Total Counter dialog box has a blue title bar with the text "Total Counter" and a close button. The main area is light beige and contains a table with six rows of counters. At the bottom is an "OK" button.

Mono Copy:	304
Color Copy:	1
Mono Print:	310
Color Print:	8
FAX Print:	0
Total Scan:	295

Checking the Configuration Page

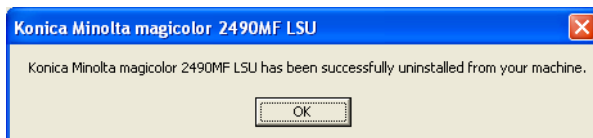
- 1 On the “Machine” menu, click “Configuration”.

The Machine Status dialog box appears.



Uninstalling LSU

- 1 Click the Start button, point to “Programs (Windows XP: **All Programs**)”, “KONICA MINOLTA”, “magicolor 2490MF”, “LSU”, and then click “Uninstall”.
- 2 Follow the on-screen instructions.
- 3 When the following dialog box appears, the uninstallation is completed.

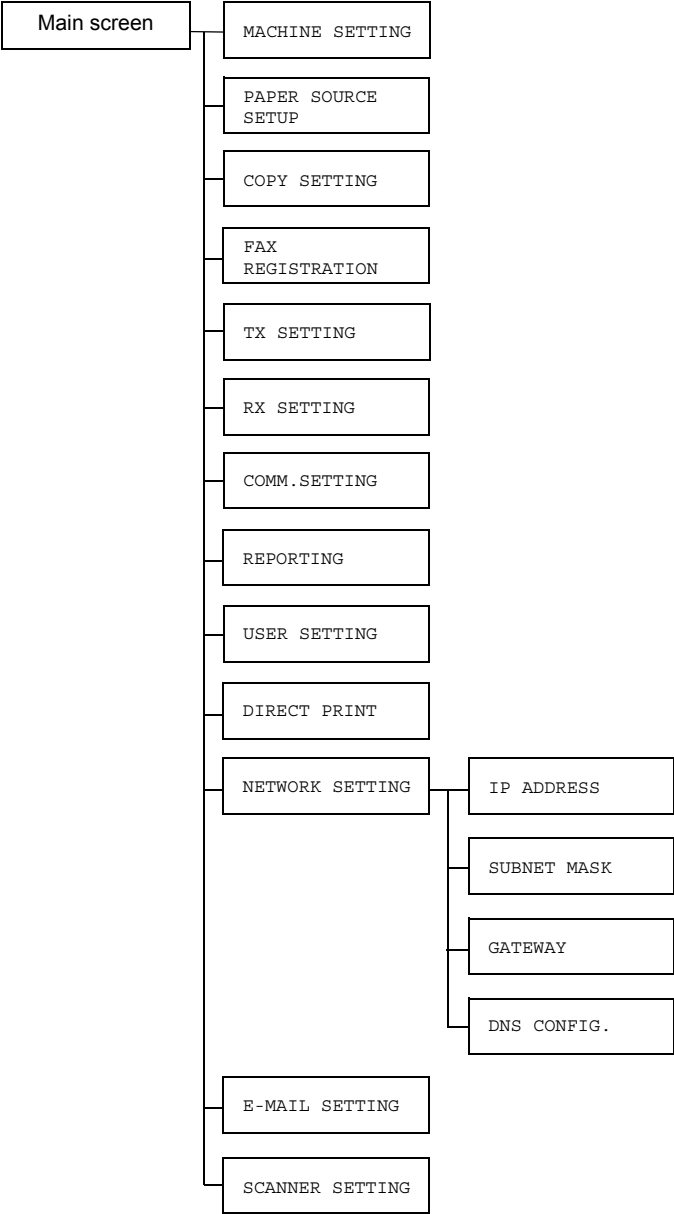


***Understanding
the Network
Configuration
Menus***

2

NETWORK SETTING Menu

Location within the Configuration Menu



Accessing the Network Setting Menu

Use the following series of keystrokes at the printer to access the Network Setting menu options on your printer. This menu provides access to all of the configurable network items.

Press this key . . .	(until) the message window reads . . .
	Main screen
Menu Select ↵	MACHINE SETTING
▼	NETWORK SETTING
Menu Select ↵	

Using the Network Setting Menu Options

If the printer is connected to a network, the following settings should be specified. For details about each setting, contact your network administrator.



To manually specify settings for the IP address, subnet mask and gateway, set “IP ADDRESS” to “SPECIFY”.



When entering the IP address, do not enter a class D (between 224.0.0.0 and 239.255.255.255) or class E (between 240.0.0.0 and 255.255.255.255) IP address.

In addition, “255” cannot be entered as the last three digits of the IP address.

IP Address

Purpose	Sets the IP address of this printer on the network.
Options	AUTO/SPECIFY
Default	AUTO (If “IP ADDRESS” is set to “SPECIFY”) 192.168.1.2
Range	(If “IP ADDRESS” is set to “SPECIFY”) 0-255 for each xxx triplet Use the keypad to input each number; use the Left and Right keys to move between triplets.

Notes	<p>A single digit number, such as “1”, cannot be input as “001”. Align the number on the left and input “1” as “1 __”. Use the ◀ and ▶ keys to move between triplets.</p> <p>The Cancel/C key can also be used for deleting. To cancel IP Address menu, hold down the Cancel/C key for more than one second, and then press the Cancel/C key again after all settings have been cleared.</p> <p>After changing the settings, the printer must be turned off, then on again.</p>
--------------	---

Subnet Mask

Purpose	Sets the subnet mask value of the network. The subnet mask allows you to limit access to your printer (for example, according to departmental divisions).
Range	<p>(If “IP ADDRESS” is set to “SPECIFY”) 0–255 for each xxx triplet</p> <p>Use the keypad to input each number; use the Left and Right keys to move between triplets.</p>
Default	<p>(If “IP ADDRESS” is set to “SPECIFY”) 255.255.255.0</p>
Notes	<p>A single digit number, such as “1”, cannot be input as “001”. Align the number on the left and input “1” as “1 __”. Use the ◀ and ▶ keys to move between triplets.</p> <p>The Cancel/C key can also be used for deleting. To cancel Subnet Mask menu, hold down the Cancel/C key for more than one second, and then press the Cancel/C key again after all settings have been cleared.</p> <p>After changing the settings, the printer must be turned off, then on again.</p>



When “IP ADDRESS” is set to “AUTO”, this menu option is not available.

Gateway

Purpose	Sets the address of the router/gateway if a router/gateway is used on your network and you allow users outside your network environment to print on your printer.
Range	(If "IP ADDRESS" is set to "SPECIFY") 0–255 for each xxx triplet Use the keypad to input each number; use the Left and Right keys to move between triplets.
Default	(If "IP ADDRESS" is set to "SPECIFY") 192.168.1.1
Notes	<p>A single digit number, such as "1", cannot be input as "001". Align the number on the left and input "1" as "1 _ _". Use the ◀ and ▶ keys to move between triplets.</p> <p>The Cancel/C key can also be used for deleting. To cancel Gateway menu, hold down the Cancel/C key for more than one second, and then press the Cancel/C key again after all settings have been cleared.</p> <p>After changing the settings, the printer must be turned off, then on again.</p>



When "IP ADDRESS" is set to "AUTO", this menu option is not available.

DNS Configure

Purpose	Sets whether or not the DNS server setting is to be specified. If specifying the DNS server setting, the SMTP server can be specified as a host name when using network scanning. If "ENABLE" is selected, type in the IP address of the DNS server. If "DISABLE" is selected, the DNS server cannot be referenced.
Options	DISABLE/ENABLE
Default	DISABLE
Range	(If "DNS CONFIG." is set to "ENABLE") 0-255 for each xxx triplet Use the keypad to input each number; use the Left and Right keys to move between triplets.
Notes	A single digit number, such as "1", cannot be input as "001". Align the number on the left and input "1" as "1 _ _". Use the ◀ and ▶ keys to move between triplets. The Cancel/C key can also be used for deleting. To cancel DNS Configure menu, hold down the Cancel/C key for more than one second, and then press the Cancel/C key again after all settings have been cleared. After changing the settings, the printer must be turned off, then on again.



When using network scanning and when specifying the SMTP server as a host name instead of as an IP address, be sure to select "ENABLE", and then specify the IP address of the DNS server.

Network Printing

3

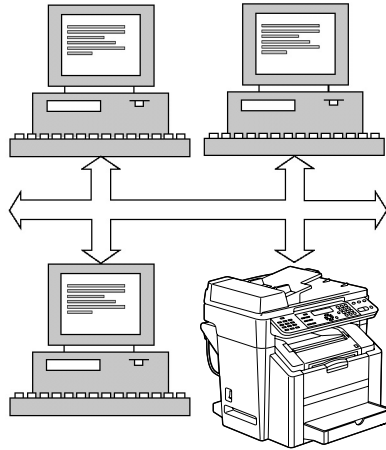
Network Connection

Theory

To connect your printer in a TCP/IP network environment, you must make sure that the internal network addresses in the printer have been set.



In many cases, you have to enter only a unique IP address. However, you may also have to enter a subnet mask and/or a gateway (router) address, depending on your network configuration requirements.



Making the Connection

Ethernet Interface

An RJ45 connector can be used as the Ethernet interface for this printer.

When connecting your printer to an Ethernet network, the tasks you perform depend on how you plan to set the printer's IP (Internet Protocol) address.

- **IP Address**—A unique identifier for each device on a TCP/IP network.
- **Subnet Mask**—A filter used to determine what subnet an IP address belongs to.
- **Gateway**—A node on a network that serves as an entrance to another network.

Since the IP address for each PC and printer on your network must be unique, you usually need to modify this preset address so it doesn't conflict with any other IP address or your network or any attached network. You can do this in one of two ways. Each is explained in detail in the following sections.

- Using DHCP
- Setting the address manually

Using DHCP

If your network supports DHCP (Dynamic Host Configuration Protocol), the printer's IP address will be automatically assigned by the DHCP server when you turn on the printer. (Refer to "Network Printing" on page 29 for a description of DHCP.)




If the IP address of the printer is not set automatically, check if the printer has been set to allow DHCP to be used (PRINT REPORT — CONFIGURATION PAGE). If the printer has been set so that DHCP cannot be used, select "AUTO" in the NETWORK SETTING — IP ADDRESS menu.

- 1 Connect your printer to the network.
When using an Ethernet cable, plug the RJ45 connector into the Ethernet interface port of the printer.
- 2 Turn on your PC and printer.
- 3 After the printer's message window is initialized, install the printer driver.

Setting the Address Manually

You may also manually change the printer's IP address, subnet mask, and gateway by using the following instructions. (See chapter 2, "Understanding the Network Configuration Menus," for more information.)

 When the IP address is changed, add a new port or reinstall the printer driver.



CAUTION

You should always notify your network's administrator before changing the printer's IP address.

- 1 Turn on your PC and printer.
- 2 After the machine's message window is initialized, set the IP address.

Press this key . . .	(until) the message window displays . . .
	Main screen
Menu Select ⏮	MACHINE SETTING? OK=SEL / or 1-9
▼	NETWORK SETTING? OK=SEL or 1-4
Menu Select ⏮	1 IP ADDRESS? OK=SEL
Menu Select ⏮	*AUTO SPECIFY <, > & SEL
▶	AUTO *SPECIFY <, > & SEL
Menu Select ⏮	ADDR= . . . OK=SEL
Use the keypad to input each number. A single digit number, such as "1", cannot be input as "001". Align the number on the left and input "1" as "1 _ _". Use the ◀ and ▶ keys to move between triplets. The Cancel/C key can also be used for deleting. To cancel IP Address menu, hold down the Cancel/C key for more than one second, and then press the Cancel/C key again after all settings have been cleared.	

Press this key . . .	(until) the message window displays . . .
Menu Select ↩	Main screen

3 Display the NETWORK SETTING menu.

4 If you don't want to set the subnet mask or gateway, go to step 8.

If you don't want to set the subnet mask, but you do want to set the gateway, go to step 6.

If you want to set the subnet mask, follow these steps.

Press this key . . .	(until) the message window displays . . .
▼	2 SUBNET MASK? OK=SEL
Menu Select ↩	SUB= . . . OK=SEL
<p>Use the keypad to input each number. A single digit number, such as "1", cannot be input as "001". Align the number on the left and input "1" as "1 _ _". Use the ◀ and ▶ keys to move between triplets. The Cancel/C key can also be used for deleting. To cancel Subnet Mask menu, hold down the Cancel/C key for more than one second, and then press the Cancel/C key again after all settings have been cleared.</p>	
Menu Select ↩	Main screen

5 Display the NETWORK SETTING menu.

6 If you don't want to set the gateway, go to step 8.

If you want to set the gateway, follow these steps.

Press this key . . .	(until) the message window displays . . .
▼	3 GATEWAY? OK=SEL

Press this key . . .	(until) the message window displays . . .
Menu Select ↵	ADDR= . . . OK=SEL
<p>Use the keypad to input each number. A single digit number, such as “1”, cannot be input as “001”. Align the number on the left and input “1” as “1 _ _”. Use the ◀ and ▶ keys to move between triplets. The Cancel/C key can also be used for deleting. To cancel Gateway menu, hold down the Cancel/C key for more than one second, and then press the Cancel/C key again after all settings have been cleared.</p>	
Menu Select ↵	Main screen

- 7 Restart the printer.
- 8 Print a configuration page to verify that the correct IP address, subnet mask, and gateway have been set.
- 9 After the printer’s message window is initialized, install the printer driver.

Network Printing

Network printing terms are described below:

- BOOTP
- DHCP
- DNS
- HTTP
- Port 9100
- SMTP
- TCP/IP

This section contains descriptions of these network printing terms.

BOOTP

BOOTP (Bootstrap Protocol) is an Internet protocol that enables a diskless workstation to discover (1) its own IP address, (2) the IP address of a BOOTP server on the network, and (3) a file that can be loaded into memory to boot the workstation. This enables the workstation to boot without requiring a hard or floppy disk drive.

DHCP

DHCP (Dynamic Host Configuration Protocol) is a protocol for assigning dynamic IP addresses to devices on a network. With dynamic addressing, a device can have a different IP address every time it connects to the network. In some systems, the device's IP address can even change while it is still connected. DHCP also supports a mix of static and dynamic IP addresses. Dynamic addressing simplifies network administration because the software keeps track of IP addresses rather than requiring an administrator to manage the task. This means that a new computer can be added to a network without the hassle of manually assigning it a unique IP address.

DNS

Abbreviation for Domain Name System. A system that acquires the supported IP addresses from host names in a network environment. DNS allows the user to access other computers over a network by specifying host names, instead of difficult to memorize and understand IP addresses.

HTTP

HTTP (HyperText Transfer Protocol) is the underlying protocol used by the World Wide Web. It defines how messages are formatted and transmitted, and what actions web servers and browsers should take in response to various commands. For example, when you enter a URL in your browser, this actually sends an HTTP command to the Web server directing it to fetch and transmit the requested web page.

Port 9100

When printing through a network, TCP/IP port number 9100 can be used to send raw data.

SMTP

SMTP (Simple Mail Transfer Protocol) is a protocol for sending e-mail.

This protocol was originally used to send e-mail between servers; however, currently client e-mail software use it to also send e-mail to servers using POP.

TCP/IP

Most networks combine TCP (Transmission Control Protocol) with the lower-level protocol IP (Internet Protocol). TCP establishes a virtual connection between two host systems and guarantees the delivery of data between them while IP specifies the format and addressing of this data sent between these two host systems.

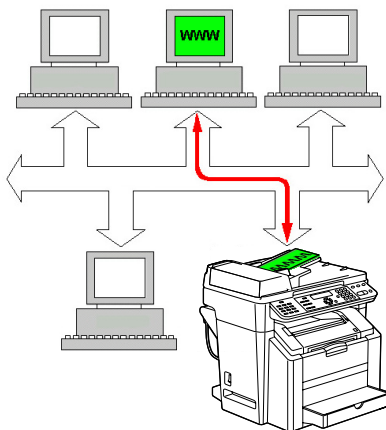
Using PageScope Web Connection

4

About PageScope Web Connection

This chapter provides information on PageScope Web Connection, an HTTP (HyperText Transfer Protocol)-based web page that resides in your printer and that you can access using your Web browser.

This page gives you instant access to printer status and the most frequently used printer configuration options. Anyone on your network can access the printer using their web browser software. In addition, with the proper password, you can change the configuration of the printer without leaving your PC.



Users who are not given passwords by the administrator can still view the configuration settings and options but are not able to save or apply changes.

Display Language

The language used in the PageScope Web Connection screens is specified from the printer's control panel. For details on specifying the display language, refer to the User's Guide (CD-ROM) provided with the printer.

Requirements

To use PageScope Web Connection, the following is required:

- Windows Server 2003/XP/2000/Me/98SE/NT4.0
- Microsoft Internet Explorer version 5.5 or later
Netscape Navigator version 7.1 or later
- TCP/IP communication software (used by PageScope Web Connection) installed on your PC
- A network, to which both your PC and the printer are connected



You cannot access PageScope Web Connection using a local (USB) connection.

Setting Up the Printer Web Page

Setting up the printer web page to run on your network involves two basic steps:

- Determining the name or address of your printer
- Setting up the “no proxy” preferences in your browser software

Determining the Printer Name

The printer web page can be accessed in two ways:



The printer names can also be determined via WINS if the network supports it.

- Through the assigned name of the printer—This name comes from the IP host table (the filename is **hosts**) on the computer system and is usually assigned by the system administrator (for example, magicolor 2490MF). It may be more convenient for you to use the printer name than the IP address.

Location of the Host Table on the PC

- Windows Server 2003/XP \windows\system32\drivers\etc\hosts
 - Windows Me/98SE \windows\hosts
 - Windows 2000/NT4.0 \winnt\system32\drivers\etc\hosts
- Through the printer's IP address—The IP address of your printer is a unique number and, therefore, may be the preferred identification to enter, especially if you have more printers active in your network. The printer's IP address is listed on the configuration page.

Setting Up Your Browser Software

Since your printer resides on your intranet and is not accessible beyond the firewall of your network, you must set up the proper “preferences” in your browser software. Your printer name or IP address must be added to the “no proxy” list in the preferences dialog box of the browser.



You need to do this procedure only once.

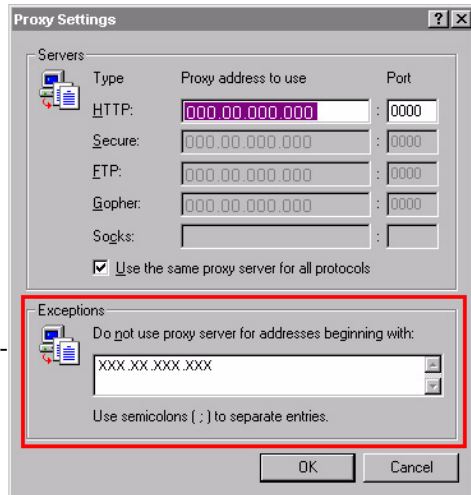
The sample screens below may be different from yours depending on software versions and operating systems in use.



Our examples represent the IP address of the printer with xxx.xxx.xxx.xxx. Always enter your printer's IP address without leading zeros. For example, 192.168.001.002 should be entered as 192.168.1.2.

Internet Explorer (version 6.0 for Windows)

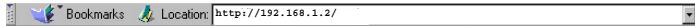
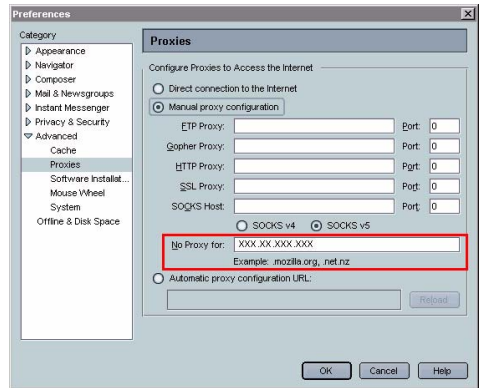
- 1 Start Internet Explorer.
- 2 From the **Tools** menu choose **Internet Options**.
- 3 Select the **Connections** tab on the dialog box.
- 4 Choose the **LAN Settings** button to display the Local Area Network (LAN) Settings dialog box.
- 5 Select **Advanced** in Proxy server to open the Proxy Settings dialog box.
- 6 In the **Exceptions** text box, type a comma after the last entry and then type the printer name or the IP address of your printer.
- 7 Choose **OK** three times to return to the main browser window.
- 8 Enter the printer's IP address in the URL Address box to access the printer home page.



Address  http://192.168.1.2/

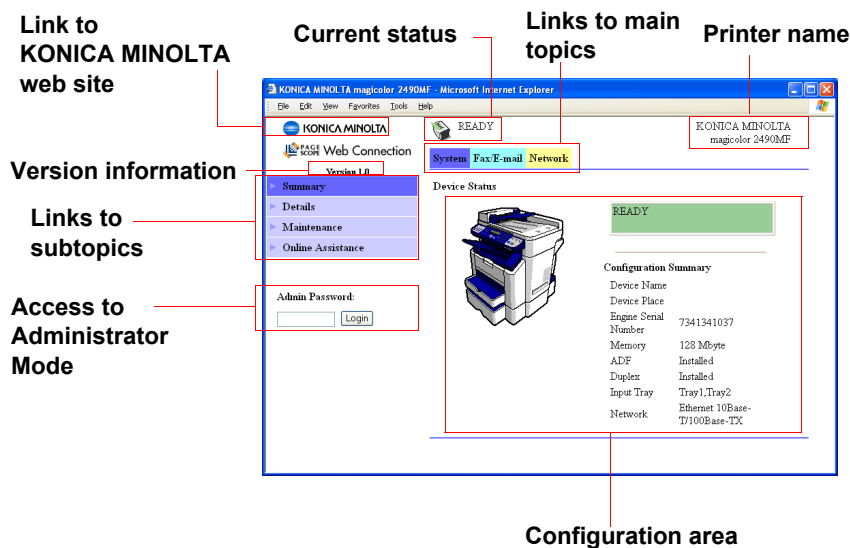
Netscape Navigator (version 7.1)

- 1 Start Netscape Navigator.
- 2 From the **Edit** menu choose **Preferences**.
- 3 Select the **Advanced/Proxies** directory from the left pane of the dialog box.
- 4 Select the **Manual Proxy Configuration** radio button.
- 5 In the **No Proxy for:** text box, type a comma after the last entry, and then type the printer name or the IP address of your printer.
- 6 Choose **OK** to return to the main browser window.
- 7 Enter the printer name or IP address in the URL Location box to access the printer home page.



Understanding the PageScope Web Connection Window

The illustration below identifies the navigation and configuration areas of the windows that you see in PageScope Web Connection windows.



Navigation

Selecting the main topic and subtopic displays the configuration area for the printer options (parameters) associated with your selections.





To change a current setting, click on the current setting and then select from the available choices or enter the new value.



In order to apply or save any changes made to the configuration settings, PageScope Web Connection must be logged in from Administrator Mode. (For details, refer to "Administrator Mode" on page 37.)

Current Status

The current status of the printer is displayed at the top of all PageScope Web Connection windows. The icon displays the type of status being displayed.

Icon	Status	Description	Examples
	Ready	The printer is online and either ready to print or printing.	READY PRINTING
	Attention	The printer needs attention, but printing continues.	WARMING UP
	Fixable Error	The printer needs attention before printing can resume.	PAPER EMPTY FRONT COVER OPEN
	Fatal Error	The printer must be rebooted. If that doesn't fix the error, service is required.	MACHINE TROUBLE

User Mode

You automatically enter User Mode whenever you enter PageScope Web Connection. In User Mode you can view configuration settings but not change them.

Administrator Mode

In order to change any configuration settings through PageScope Web Connection, you must first enter Administrator Mode:

- 1 Type the password in the **Admin Password** text box.



*The default password is "MagiMFP". However, once you are in Administrator Mode, you can change this in the **System - Preference** window.*

- 2 Choose the **Login** button.

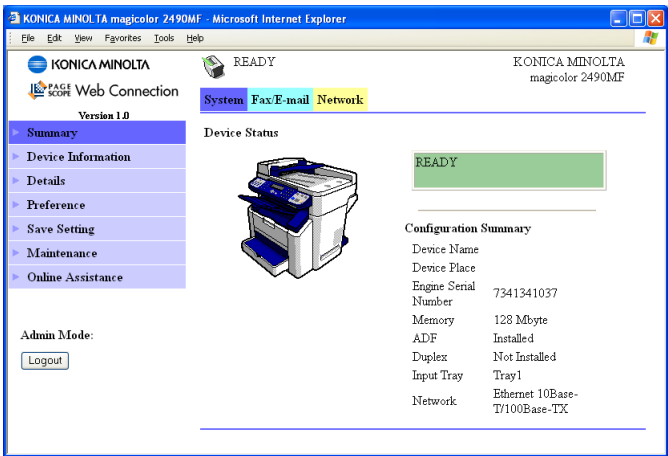
*If you type an incorrect password, the following message displays:
"Please retype the correct password." Retype the password.*

Configuring the Printer

The Configuration page allows you to view and change the configuration settings of the printer.

System Page


This page allows you to configure several user- and printer-specific items.



Summary (shown above)

The **System - Summary** window provides the following information.

Item	Description
Device Name	Displays the name of the printer.
Device Place	Displays the setup location for the printer.
Engine Serial Number	Displays the serial number of the printer engine.
Memory	Displays the amount of memory installed in the printer.
ADF	Identifies whether the ADF is "Installed" or "Not Installed."
Duplex	Identifies whether the optional duplex unit is "Installed" or "Not Installed."
Input Tray	Identifies whether an optional lower feeder unit is "Tray1" or "Tray1, Tray2."

Item	Description
Network	Lists the printer interface (Ethernet 10Base-T/100Base-TX).
Logout button	Logs out of Administrator Mode and returns to User Mode.  This button is available from all web pages.



All of the information displayed on the **System Page - Summary** is read-only; however, some of the items (such as the device name) are configurable on other pages.

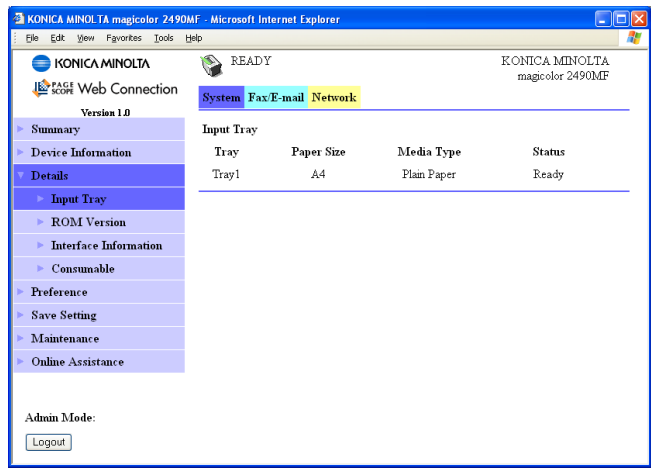
Device Information

The **System - Device Information** window allows you to configure the following items:

Item	Description
Administrator Name	Specifies the name of the administrator for the printer. Range: Up to 255 characters Default: [Blank]
Device Name	Specifies the name of the printer. Range: Up to 255 characters Default: [Blank]
Device Place	Specifies the setup location of the printer. Range: Up to 255 characters Default: [Blank]

Details

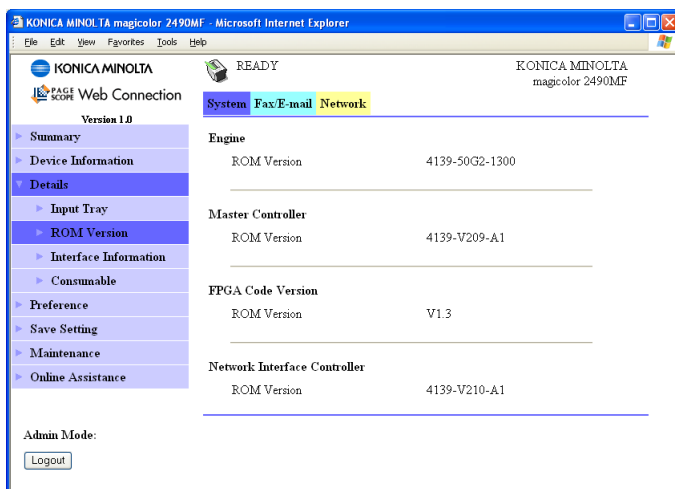
Input Tray



The **System - Details - Input Tray** window provides the following information.

Item	Description
Tray	Identifies the media feed units (Tray 1/2) installed on the printer.
Paper Size	Indicates the size of media loaded in a specific tray.
Media Type	Indicates the type of media loaded in a specific tray.
Status	Indicates the media status (“Ready” or “Empty”) for each tray.

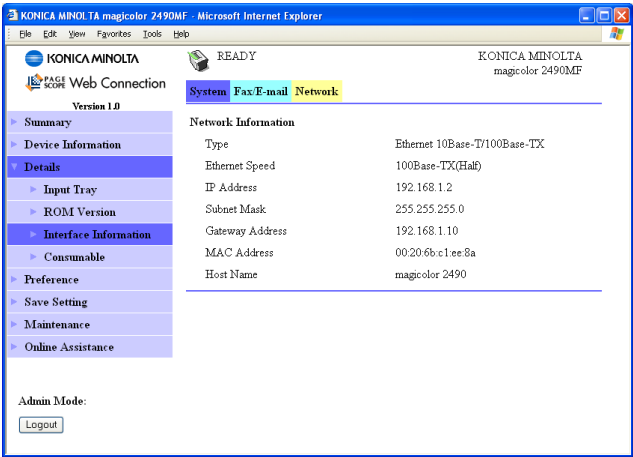
ROM Version



The **System - Details - ROM Version** window provides the following information.

Item	Description
Engine	Displays the ROM version of the printer engine.
Master Controller	Displays the ROM version of the master controller.
FPGA Code Version	Displays the ROM version of the FPGA code.
Network Interface Controller	Displays the ROM version of the network interface controller.

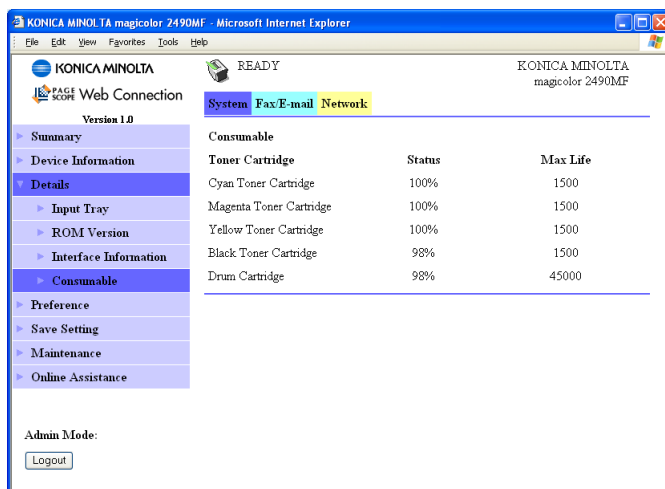
Interface Information



The **System - Details - Interface Information** window provides the following information.

Item	Description
Type	Identifies the type of network interface on the printer (Ethernet 10Base T/100Base TX).
Ethernet Speed	Identifies the transmission speed for the network and the transmission method for bi-directional transmission. The following settings are available. Auto, 10Base-T, 100Base-TX
IP Address	Identifies the IP (Internet Protocol) address of the Ethernet interface. The address can also be viewed on the control panel.
Subnet Mask	Identifies the subnet mask address of the Ethernet interface. The address can also be viewed on the control panel.
Gateway Address	Identifies the gateway address of the Ethernet interface. The address can also be viewed on the control panel.
MAC Address	Identifies the Media Access Control (MAC) address of the Ethernet interface.
Host Name	Identifies the name of the printer.

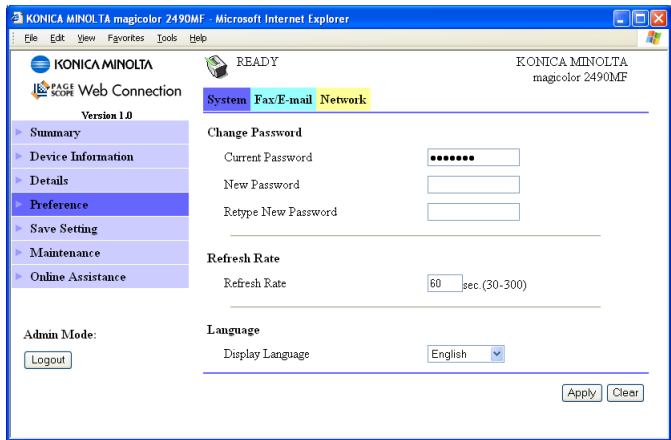
Consumable





The **System - Details - Consumable** window provides the following information:

Item	Description
Consumable	Identifies the type of consumable that is being monitored.
Status	Indicates the remaining life of the consumables as a percentage.
Max Life	Identifies the maximum life expectancy of the consumables in pages.

Preference

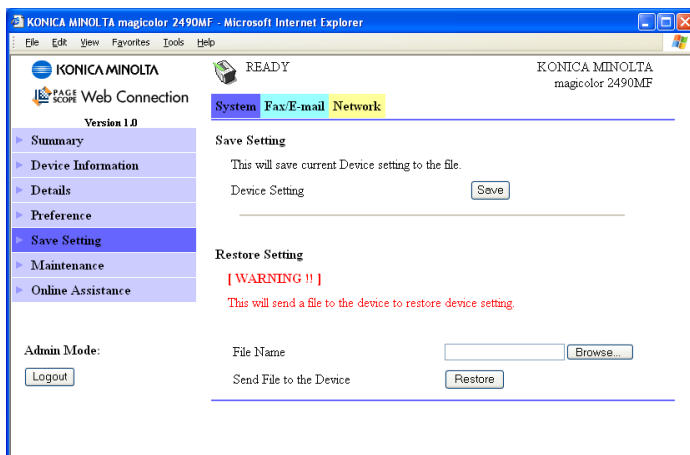


The **System - Preference** window allows you to configure the following items:

Item	Description
Current Password	Type in the current password. Range: Up to 8 characters Default: MagiMFP
New Password	Sets a new password to enter Administrator Mode.  Passwords can be set to any string of numbers and letters (uppercase and lowercase) between 4 and 8 characters in length.
Retype New Password	Verifies the new password typed in the New Password text box.  If the password typed in both text boxes doesn't match, the following message displays when you choose the Apply button: "Please retype the correct password." Click the OK button, and then retype the passwords in both text boxes.

Item	Description
Refresh Rate	<p>Sets the time interval (in seconds) that passes before the screen automatically updates. During a screen refresh, the printer is polled for any new information or status, and all of the fields in the PageScope Web Connection windows are updated.</p> <p>Range: 30–300 seconds (0.5–5 minutes) Default: 60 seconds</p> <ul style="list-style-type: none"> ■ If less than 30 seconds is specified, the setting changes to 30 seconds. ■ If more than 300 seconds is specified, the setting changes to 300 seconds.
Display Language	<p>Identifies the language displayed in the PageScope Web Connection windows.</p> <p>Choice: English, French, German, Italian, Spanish, Portuguese, Czech, Slovak, Hungarian, Polish, Russian, Japanese Default: English</p>
Apply button	Applies the configuration settings for this window.
Clear button	Resets all configuration settings for this window to their user defaults.

Save Setting



From the **System - Save Setting** page, the machine settings can be saved as a file on the computer being used. In addition, the saved settings file can be read by the machine.



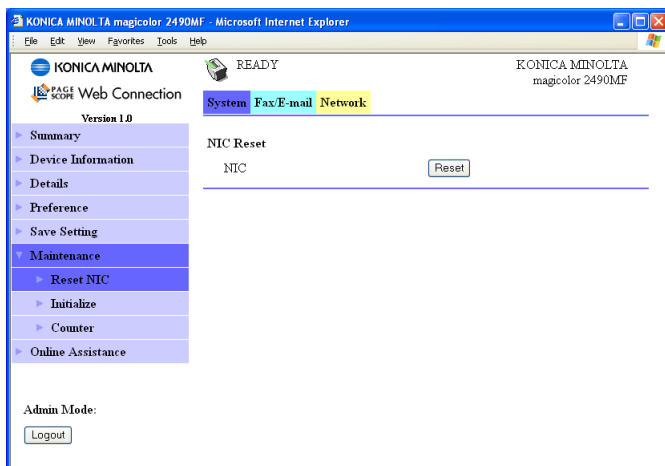
The following settings are not saved in the file:

- IP address of the machine
- Subnet mask
- Default gateway
- Base Port Number
- Settings for DHCP and BOOTP

Item	Description	
Save Setting	Save button	Saves the machine settings as a file.
Restore Setting	File Name	Specify the name of the file where the machine settings are to be saved.
	Browse button	Displays the dialog box for browsing to the folder where the file containing the machine settings was saved.
	Restore button	Sends the settings file to the machine and overwrites the machine settings.

Maintenance

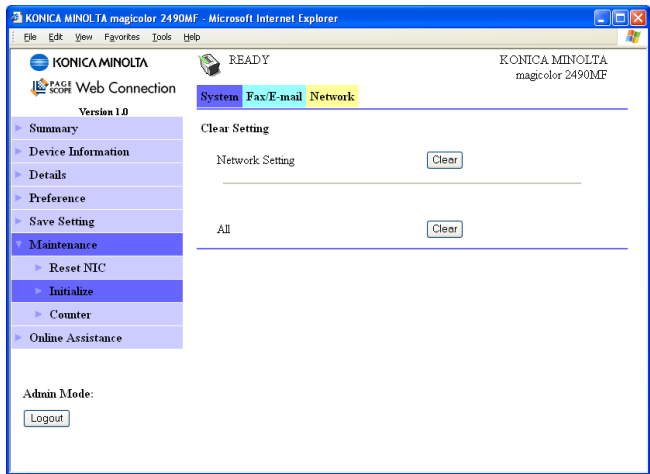
Reset NIC



The **System - Maintenance - Reset NIC** page allows you to reset the network controller.

Item	Description
Reset button	When clicked, the message “Jobs in progress will not be saved when the controller is reset. Do you want to continue the transaction?” appears. Click Yes to automatically restart the printer.

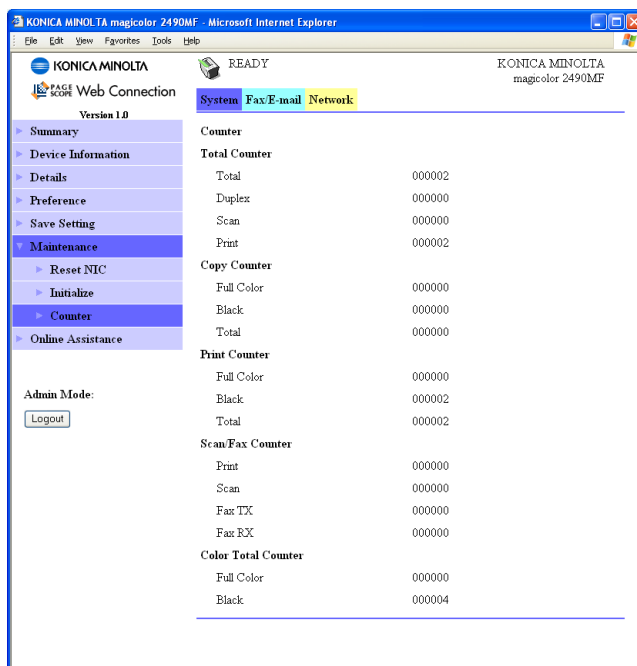
Initialize



The **System - Maintenance - Initialize** page allows you to reset the machine settings to their factory defaults.

Item	Description
Network Setting	Resets the network settings to their defaults.
All	Resets all settings to their defaults.
Clear button	When clicked, the message “Do you really want to return the settings to the factory defaults?” appears. Click Yes to automatically restart the printer and return the settings to their default values.

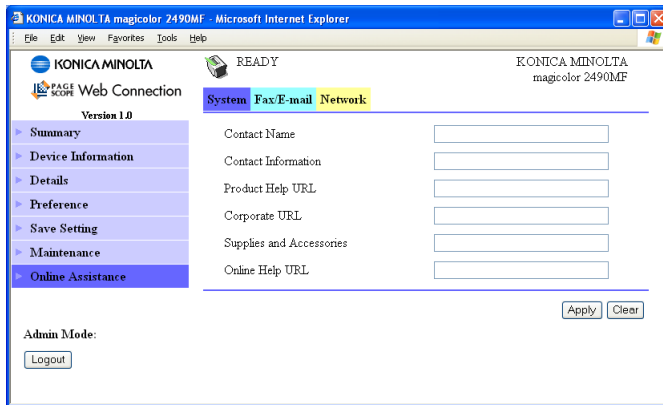
Counter



The **System - Maintenance - Counter** window provides the following information:

Item	Description
Total Counter	Indicates the total number of all printed and scanned pages, the total number of double-sided prints, the total number of scanned document pages, and the total number of printed pages.
Copy Counter	Indicates the number of copied pages (in color, in black and white, and in total).
Print Counter	Indicates the number of printed pages (in color, in black and white, and in total).
Scan/Fax Counter	Indicates the total number of stored pages that were printed, the total number of pages scanned in Fax mode and Scan mode, the total number of sent fax pages (Tx), and the total number of received fax pages (Rx).
Color Total Counter	Indicates the total number of pages printed in color and the total number of pages printed in black and white.

Online Assistance



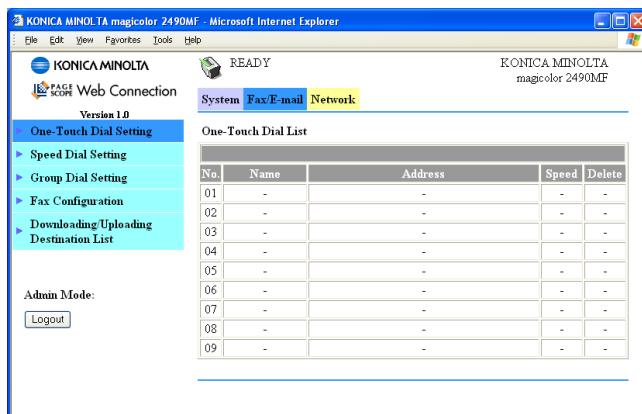
The **System - Online Assistance** window allows you to configure the following items:

Item	Description
Contact Name	Sets the name of the person or organization responsible for providing assistance with the printer. Range: Up to 32 characters Default: [Blank]
Contact Information	Sets the telephone number for printer assistance. Range: Up to 32 characters Default: [Blank]
Product Help URL	Sets the help web site address for printer assistance. Range: Up to 64 characters Default: [Blank]
Corporate URL	Sets the KONICA MINOLTA corporate web site address. Range: Up to 64 characters Default: [Blank]
Supplies and Accessories	Sets the telephone number where you can purchase printer supplies and accessories. Range: Up to 32 characters Default: [Blank]
Online Help URL	Sets the web address for on-line assistance. Range: Up to 64 characters Default: [Blank]

Item	Description
Apply button	Applies the configuration settings for this window.
Clear button	Resets all configuration settings for this window to their user defaults.

Fax/E-mail

On the **Fax/E-mail** page, settings for the destination information to be registered in the machine and the fax transmission/reception settings can be specified.

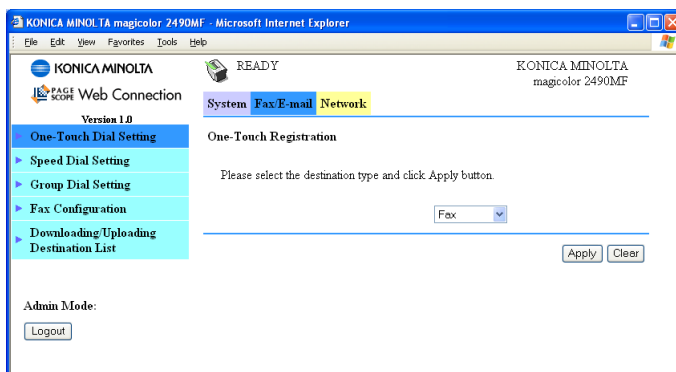


One-Touch Dial Setting (shown above)

On the **Fax/E-mail - One-Touch Dial Setting** page, settings for one-touch dialing can be specified.

Item	Description
No.	Displays the one-touch dial number. Click a one-touch dial number where no destination is registered to display the One-Touch Registration page, and then select the type of one-touch dial destination to be added. If a destination is already registered with the one-touch dial number that is clicked, the registered information can be edited.
Name	Displays the name of the one-touch dial number.
Address	Displays the destination information (fax number, e-mail address or "Group Dial") registered with the one-touch dial number.
Speed	Displays the fax transmission speed when faxing with the corresponding type of one-touch dial destination.
Delete button	Deletes the corresponding one-touch dial number.

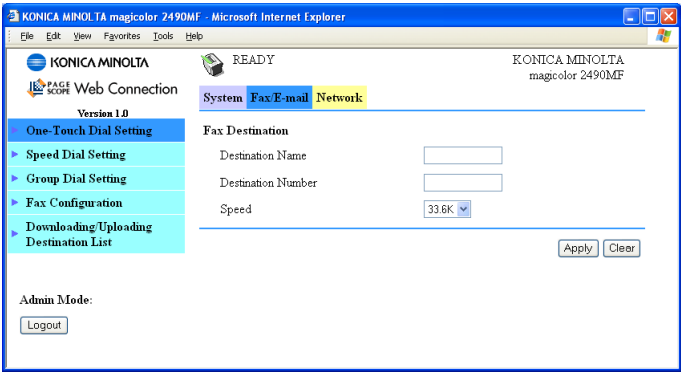
One-Touch Registration



On the **Fax/E-mail - One-Touch Dial Setting - One-Touch Registration** page, select the type of one-touch dial destination to be added.

Item	Description
One-Touch Registration	<p>From the drop-down list, select the type of one-touch dial destination to be added.</p> <p>If "Fax" is selected, the Fax Destination page will be displayed.</p> <p>If "E-mail" is selected, the E-mail Destination page will be displayed.</p> <p>If "Group Dial" is selected, the Group Dial Registration page will be displayed.</p> <p>Choices: Fax, E-mail, Group Dial</p> <p>Default: Fax</p>
Apply button	Displays the page for the type of one-touch dial destination selected from the list.
Clear button	Resets all configuration settings for this window to their user defaults.

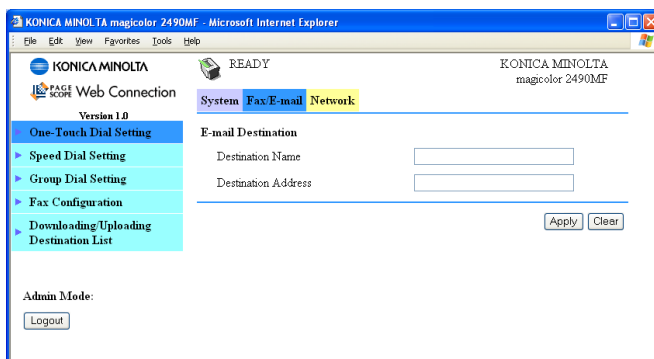
Fax Destination



The **Fax/E-mail - One-Touch Dial Setting - Fax Destination** window allows you to configure the following items:

Item	Description
Destination Name	Specify the name of the destination. Range: Up to 20 characters. Default: [Blank]
Destination Number	Specify the fax number for the destination. Range: Up to 50 characters Default: [Blank]
Speed	Select the speed of the fax modem. Choices: 9.6K, 14.4K, 33.6K Default: 33.6K
Apply button	Applies the configuration settings for this window.
Clear button	Resets all configuration settings for this window to their user defaults.

E-mail Destination



The **Fax/E-mail - One-Touch Dial Setting - E-mail Destination** window allows you to configure the following items:

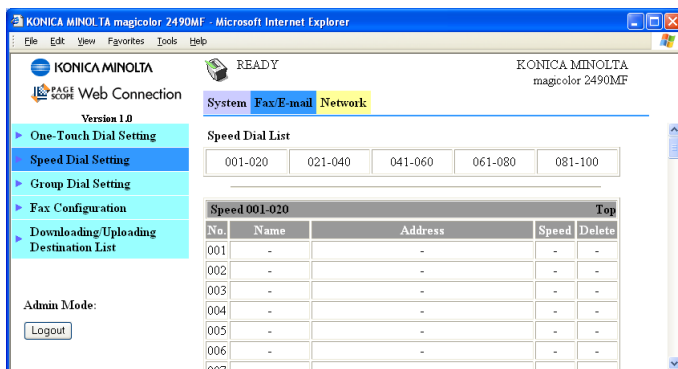
Item	Description
Destination Name	Specify the name of the destination. Range: Up to 20 characters. Default: [Blank]
Destination Address	Specify the e-mail address of the destination. Range: Up to 64 characters Default: [Blank]
Apply button	Applies the configuration settings for this window.
Clear button	Resets all configuration settings for this window to their user defaults.

Group Dial Registration

The **Fax/E-mail - One-Touch Dial Setting - Group Dial Registration** window allows you to configure the following items:

Item	Description
Group Dial Name	Specify the name of the group dial. Range: Up to 20 characters. Default: [Blank]
One-Touch Dial Index	Click to jump to the beginning of the one-touch dial list within the same page.
Speed Dial Index	Click to jump to the beginning of the speed dial list within the same page.
One-Touch 01-09	Displays the list of registered one-touch dial numbers. Select the check box on the left side of the list to add the corresponding one-touch dial destination to a group dial.
Speed 001-020 Speed 021-040 Speed 041-060 Speed 061-080 Speed 081-100	Displays the list of registered speed dial numbers, 20 at a time. Select the check box on the left side of the list to add the corresponding speed dial destination to a group dial.
Apply button	Applies the configuration settings for this window.
Clear button	Resets all configuration settings for this window to their user defaults.

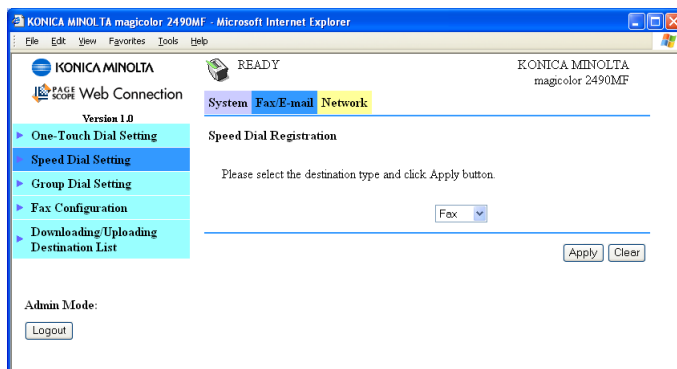
Speed Dial Setting



On the **Fax/E-mail - Speed Dial Setting** page, settings for speed dialing can be specified.

Item	Description
Speed Dial List	Click to jump to the beginning of the speed dial list within the same page.
No.	Displays the speed dial number. Click a speed dial number where no destination is registered to display the Speed Dial Registration page, and then select the type of speed dial destination to be added. If a destination is already registered with the speed dial number that is clicked, the registered information can be edited.
Name	Displays the name of the speed dial number.
Address	Displays the destination information (fax number or e-mail address) registered with the speed dial number.
Speed	Displays the fax transmission speed when faxing with the corresponding type of one-touch dial destination.
Delete button	Deletes the corresponding one-touch dial number.

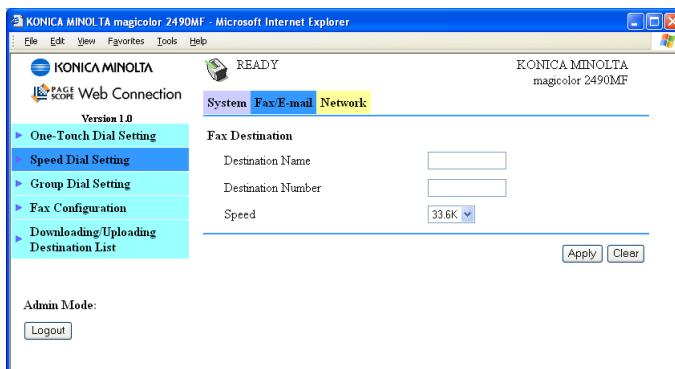
Speed Dial Registration



On the **Fax/E-mail - Speed Dial Setting - Speed Dial Registration** page, select the type of speed dial destination to be added.

Item	Description
Speed Dial Registration	<p>From the drop-down list, select the type of speed dial destination to be added.</p> <p>If “Fax” is selected, the Fax Destination page will be displayed.</p> <p>If “E-mail” is selected, the E-mail Destination page will be displayed.</p> <p>Choices: Fax, E-mail</p> <p>Default: Fax</p>
Apply button	Displays the page for the type of speed dial destination selected from the list.
Clear button	Resets all configuration settings for this window to their user defaults.

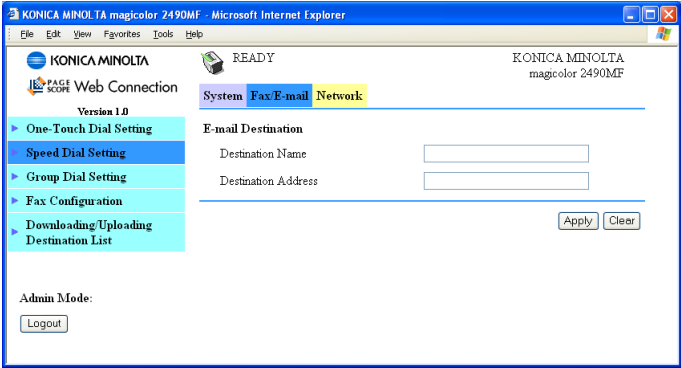
Fax Destination



The **Fax/E-mail - Speed Dial Setting - Fax Destination** window allows you to configure the following items:

Item	Description
Destination Name	Specify the name of the destination. Range: Up to 20 characters. Default: [Blank]
Destination Number	Specify the fax number for the destination. Range: Up to 50 characters Default: [Blank]
Speed	Select the speed of the fax modem. Choices: 9.6K, 14.4K, 33.6K Default: 33.6K
Apply button	Applies the configuration settings for this window.
Clear button	Resets all configuration settings for this window to their user defaults.

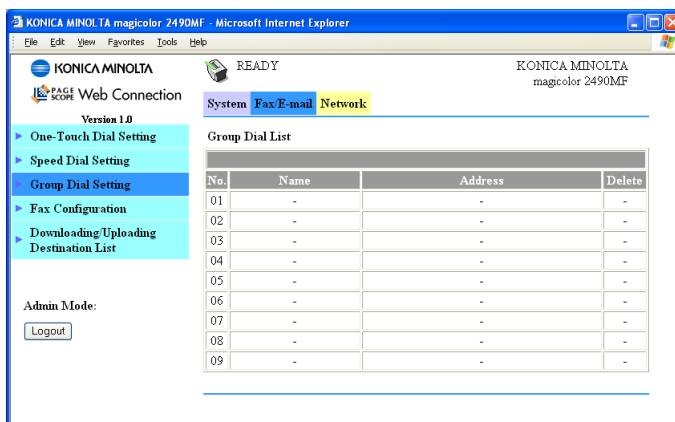
E-mail Destination



The **Fax/E-mail - Speed Dial Setting - E-mail Destination** window allows you to configure the following items:

Item	Description
Destination Name	Specify the name of the destination. Range: Up to 20 characters. Default: [Blank]
Destination Address	Specify the e-mail address of the destination. Range: Up to 64 characters Default: [Blank]
Apply button	Applies the configuration settings for this window.
Clear button	Resets all configuration settings for this window to their user defaults.

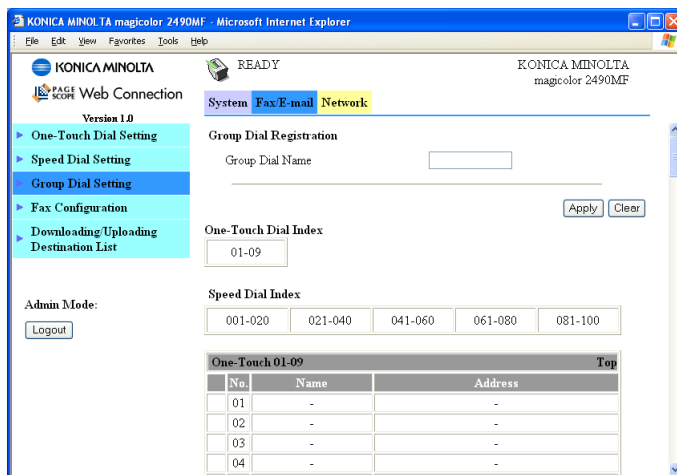
Group Dial Setting



On the **Fax/E-mail - Group Dial Setting** page, settings for group dialing can be specified.

Item	Description
No.	Displays the group dial number. Click a number where no group dial is registered to display the Group Dial Registration page, and then specify the settings for the group dial to be added. If a group is already registered with the number that is clicked, the registered information can be edited.
Name	Displays the name of the group dial.
Address	For group dialing, "(Group Dial)" is displayed.
Delete button	Deletes the corresponding group dial.

Group Dial Registration



The **Fax/E-mail - Group Dial Setting - Group Dial Registration** window allows you to configure the following items:

Item	Description
Group Dial Name	Specify the name of the group dial. Range: Up to 20 characters. Default: [Blank]
One-Touch Dial Index	Click to jump to the beginning of the one-touch dial list within the same page.
Speed Dial Index	Click to jump to the beginning of the speed dial list within the same page.
One-Touch 01-09	Displays the list of registered one-touch dial numbers. Select the check box on the left side of the list to add the corresponding one-touch dial destination to a group dial.
Speed 001-020 Speed 021-040 Speed 041-060 Speed 061-080 Speed 081-100	Displays the list of registered speed dial numbers, 20 at a time. Select the check box on the left side of the list to add the corresponding speed dial destination to a group dial.
Apply button	Applies the configuration settings for this window.
Clear button	Resets all configuration settings for this window to their user defaults.

Fax Configuration

KONICA MINOLTA magicolor 2490MF - Microsoft Internet Explorer

KONICA MINOLTA magicolor 2490MF

System Fax/E-mail Network

Version 1.0

One-Touch Dial Setting

Speed Dial Setting

Group Dial Setting

Fax Configuration

Downloading/Uploading Destination List

Admin Mode: Logout

User Data Registration

User Name (32 chara.)

Fax Number (20 chara.)

Transmission Operation

Scan Contrast

Resolution

Reception Operation

Memory RX Mode

On Time

Off Time

Password(XXXXX)

Auto RX Mode

Number of Rings

Footer Enable

Reduction RX

RX Print

Select Tray

Communication Setting

Tone/Pulse

Line Monitor Volume

PSTN/PBX

Reporting

Activity Report

TX Result Report

RX Result Report

User Settings


Fax PTT Setting

Date Format

Preset Zoom

Apply Clear



On the **Fax/E-mail - Fax Configuration** page, settings for sending and receiving faxes can be specified.

Item	Description	
User Data Registration	User Name	Specify the user name. Range: Up to 32 characters. Default: [Blank] Configuration Menu Equivalent: USER SETTING - USER NAME
	Fax Number	Specify the fax number. Range: Up to 20 characters. Default: [Blank] Configuration Menu Equivalent: USER SETTING - USER FAX NO .
Transmission Operation	Scan Contrast	Select the contrast for scanning documents. Choices: -1, 0, +1 Default: 0
	Resolution	Select the default scanning resolution (image quality). Choices: Standard, Fine, Super Fine, Halftone/Standard, Halftone/Fine, Halftone/Super Fine Default: Standard Configuration Menu Equivalent: TX SETTING - RESOLUTION
	Header	Select whether or not the transmission information (date sent, sender's name, fax number, etc.) is printed on sent faxes. Choices: On, Off Default: On Configuration Menu Equivalent: TX SETTING - HEADER  <i>On models for the USA, Canada and Korea, this menu item doesn't appear.</i>

Item	Description	
Reception Operation	Memory RX Mode	<p>Select whether to allow ("On") memory reception or not ("Off"). In cases when confidential faxes are being received, the received document can be stored in the memory and printed at a specified time or when memory reception is set to "Off". A password can be set to specify the starting time or ending time of memory reception, or to cancel the function. The set starting time and ending time are valid every day until memory reception is turned off.</p> <p>Choices: On, Off Default: Off Configuration Menu Equivalent: RX SETTING - MEMORY RX MODE</p>
	On Time	<p>Specify the time when memory reception mode begins.</p> <p>Range: 00:00 to 23:59 Default: [Blank]</p>
	Off Time	<p>Specify the time when memory reception mode ends.</p> <p>Range: 00:00 to 23:59 Default: [Blank]</p>
	Password	<p>Specify the password for setting the starting and ending time for memory reception mode and for canceling memory reception.</p> <p>Range: Four digits. Default: [Blank]</p>
	Auto RX Mode	<p>Select whether the reception mode is automatic reception or manual reception.</p> <p>Choices: On, Off Default: On Configuration Menu Equivalent: RX SETTING - RX MODE</p>

Item	Description	
	Number of Rings	<p>Enter the number of rings between 1 and 16 until the call is answered.</p> <p>Range: 1-16</p> <p>Configuration Menu Equivalent:</p> <p>RX SETTING - NO. of RING</p>
	Footer Enable	<p>Select whether or not the reception information (date received, number of pages, etc.) is printed at the bottom of each received document.</p> <p>Choices: On, Off</p> <p>Default: Off</p> <p>Configuration Menu Equivalent:</p> <p>RX SETTING - FOOTER</p>
	Reduction RX	<p>Select whether documents longer than the paper are printed reduced, split, or discarded.</p> <p>If "On" is selected, received faxes are printed reduced.</p> <p>If "Off" is selected, received faxes are printed at full size and split onto multiple pages.</p> <p>If "Cut" is selected, received faxes are printed while erasing any part that does not fit within the page. However, when sending a document more than 24 mm (1 inch) longer than the paper, "CUT" is not available. (In this case, the document is split.)</p> <p>Choices: ON, OFF, CUT</p> <p>Default: ON</p> <p>Configuration Menu Equivalent:</p> <p>RX SETTING - REDUCTION RX</p>

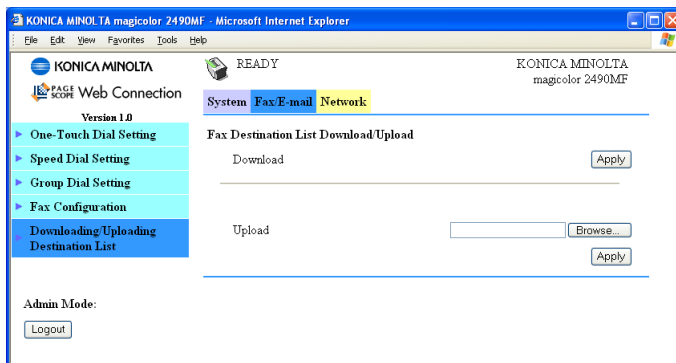
Item	Description	
	RX Print	<p>Select whether the fax is only printed after all document pages have been received or printing begins as soon as the first page of the document is received.</p> <p>If "Memory RX" is selected, printing begins after all pages have been received.</p> <p>If "Print RX" is selected, printing begins after the first page has been received.</p> <p>Choices: Memory RX, Print RX</p> <p>Default: Memory RX</p> <p>Configuration Menu Equivalent:</p> <p style="text-align: center;">RX SETTING - RX PRINT</p>
	Select Tray	<p>This function can be used to select which paper tray can be used to supply paper when printing received documents or transmission reports. A paper tray that cannot be used for supplying paper can also be specified.</p> <p>When Tray2 is not installed:</p> <p>Choices: Tray1 Enable, Tray1 Disable</p> <p>Default: Tray1 Enable</p> <p>When Tray2 is installed:</p> <p>Choices: Tray1, 2 Enable Tray1, 2 Disable Tray1 Disable, Tray2 Enable Tray1 Enable, Tray2 Disable</p> <p>Default: Tray1, 2 Enable</p> <p>Configuration Menu Equivalent:</p> <p style="text-align: center;">RX SETTING - SELECT TRAY</p>

Item	Description	
Communication Setting	Tone/Pulse	<p>Select the dialing system. If this function is not correctly set to the type of dialing system used, faxes cannot be sent.</p> <p>Select the correct setting after checking which type of dialing system is used by your telephone line.</p> <p>Choices: Tone, Pulse 10PPS, Pulse 20PPS Default: Tone Configuration Menu Equivalent: COMM.SETTING - TEL LINE TYPE</p> <p> <i>On models for the USA, Canada, German and New Zealand, the pulse value cannot be changed.</i></p>
	Line Monitor Volume	<p>Select the volume of the monitoring sound of the transmission signal.</p> <p>Choices: High, Low, Off Default: Low Configuration Menu Equivalent: COMM.SETTING - LINE MONITOR</p> <p> <i>Even when "Off" is selected, the monitoring sound can be heard when the "On hook" key in the control panel is pressed.</i></p>
	PSTN/PBX	<p>Select whether the connected telephone wiring is a public switched telephone network (PSTN) or a private branch exchange (PBX).</p> <p>For a PBX system, the pre-fix number (outside line access number (or extension number)) can be specified.</p> <p>Choices: PSTN, PBX PBX Range: 0-9999 (Default: Blank) Default: PSTN Configuration Menu Equivalent: COMM.SETTING - PSTN/PBX</p>

Item	Description	
Reporting	Activity Report	<p>Every 60 transmissions/receptions, a report can be printed to show the results of the transmissions/receptions. Select whether the report is printed automatically when the 60th transmission/reception is reached.</p> <p>Choices: ON, OFF Default: ON Configuration Menu Equivalent: REPORTING - ACTIVITY REPORT</p>
	TX Result Report	<p>Select whether the report showing the result of a transmission is printed automatically after the transmission is finished.</p> <p>If "ON" is selected, a report is printed after each transmission is finished.</p> <p>If "ON(ERROR)" is selected, a report is printed after the transmission only if an error occurred.</p> <p>If "OFF" is selected, a report is not printed after each transmission is finished. The report is not printed even if an error occurred.</p> <p>Choices: ON, ON(ERROR), OFF Default: ON(ERROR) Configuration Menu Equivalent: REPORTING - TX RESULT REPORT</p>
	RX Result Report	<p>Select whether the report showing the result of a reception is printed automatically after reception is finished.</p> <p>If "ON" is selected, a report is printed after each reception is finished.</p> <p>If "ON(ERROR)" is selected, a report is printed after the reception only if an error occurred.</p> <p>If "OFF" is selected, a report is not printed after each reception is finished. The report is not printed even if an error occurred.</p> <p>Choices: ON, ON(ERROR), OFF Default: ON(ERROR) Configuration Menu Equivalent: REPORTING - RX RESULT REPORT</p>

Item	Description	
Use Settings	Fax PTT Setting	Display the country where this machine is installed. Configuration Menu Equivalent: USER SETTING - FAX PTT SETTING
	Date Format	Select the display format for the reports and lists. Choices: MM/DD/YY, DD/MM/YY, YY/MM/DD Default: MM/DD/YY Configuration Menu Equivalent: USER SETTING - DATE FORMAT
	Preset Zoom	Select whether the zoom method is aligned on the inch paper sizes or the metric paper sizes when "Reduction RX" is set to "ON". Choices: Inch, Metric Configuration Menu Equivalent: USER SETTING - PRESET ZOOM
Apply button		Applies the configuration settings for this window.
Clear button		Resets all configuration settings for this window to their user defaults.

Downloading/Uploading Destination List



In the **Fax/E-mail - Downloading/Uploading Destination List** page, the destination information can be downloaded or uploaded.

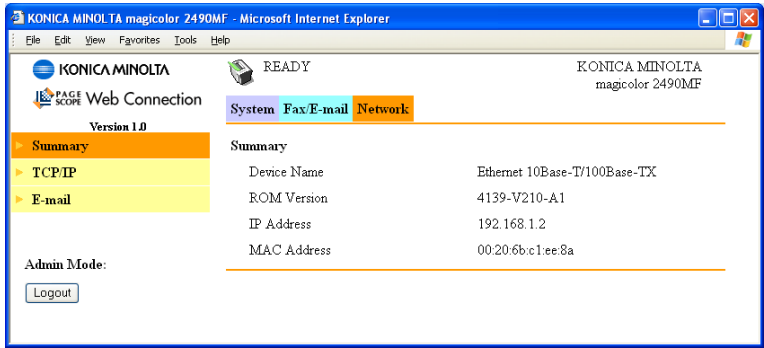
Item	Description
Download	Click the Apply button to save the registered destinations as a file on the computer being used.
Upload	Specify the location of the file containing the destinations, and then click the Apply button to write the destinations to the machine.



When making changes to an exported CSV file, use a text editor. If the file is not saved using a text editor, an error will occur when the file is imported.

Network

The Network page allows you to configure the machine's network interface. For more information on these protocols, see chapter 3, "Network Printing."



Summary (shown above)

The **Network - Summary** window provides the following information:

Item	Description
Device Name	Displays information on the network interface.
ROM Version	Displays the version of the network firmware.
IP Address	Identifies the IP (Internet Protocol) address of the Ethernet interface.
MAC Address	Identifies the Media Access Control (MAC) address of the Ethernet interface.

TCP/IP

KONICA MINOLTA magicolor 2490MF - Microsoft Internet Explorer

File Edit View Favorites Tools Help

KONICA MINOLTA READY KONICA MINOLTA magicolor 2490MF

PAGE SCORE Web Connection

Version 1.0

System Fax/E-mail **Network**

TCP/IP

Automatic IP Setting ☐ DHCP/BOOTP

IP Address 192 168 1 2

Subnet Mask 255 255 255 0

Default Gateway 192 168 1 10

RAW Port Number 9100

Host Name magicolor2490


Enable DNS Server Disable



DNS Server Address

Admin Mode: Logout

Apply Clear

The **Network - TCP/IP** window allows you to configure the following items. For more information on these TCP/IP settings, see chapter 3, “Network Printing.”

Item	Description
Automatic IP Setting	<p>Specifies the automatic assigning method for the printer IP address.</p> <p>Choices: On, Off</p> <p>Default: On</p> <p>Configuration Menu Equivalent: NETWORK SETTING - IP ADDRESS</p>
IP Address*	<p>Sets the printer's IP address.</p> <p>Range: 0–255 for each xxx triplet</p> <p>Default: [Blank]</p> <p> <i>If the IP address is outside the range, the following message displays when you choose the Apply button: “Please enter a correct address.” Click OK button, and then type an appropriate number.</i></p> <p>Configuration Menu Equivalent: NETWORK SETTING - IP ADDRESS</p>

Item	Description
Subnet Mask*	<p>Sets the printer's subnet mask address.</p> <p>Range: 0–255 for each xxx triplet Default: [Blank]</p> <p> <i>If the subnet mask address is outside the range, the following message displays when you choose the Apply button: “Please enter a correct address.” Click OK button, and then type an appropriate number.</i></p> <p>Configuration Menu Equivalent: NETWORK SETTING - SUBNET MASK</p>
Default Gateway*	<p>If a router is used on the network, sets the router's address.</p> <p>Range: 0–255 for each xxx triplet Default: [Blank]</p> <p> <i>If the router address is outside the range, the following message displays when you choose the Apply button: “Please enter a correct address.” Click OK button, and then type an appropriate number.</i></p> <p>Configuration Menu Equivalent: NETWORK SETTING - GATEWAY</p>
RAW Port Number	Displays the number of the printer's RAW port.
Host Name	<p>Specifies the host name.</p> <p>Range: Up to 63 characters Default: magicolor2490</p>
Enable DNS Server	<p>Sets whether or not the DNS server setting is to be specified.</p> <p>Choices: Disable/Enable Default: Disable</p> <p>Configuration Menu Equivalent: NETWORK SETTING - DNS CONFIG.</p>
DNS Server Address	<p>Specifies the DNS server address.</p> <p>Range: 0-255 for each xxx triplet Default: [Blank]</p>
Apply button	Applies the configuration settings for this window.

Item	Description
Clear button	Resets all configuration settings for this window to their user defaults.
* These settings can be entered only if “DHCP/BOOTP” isn’t checked from the Automatic IP Setting. Always enter these addresses without leading zeros. For example, 131.011.010.001 should be entered as 131.11.10.1.	

E-mail

The screenshot shows the 'KONICA MINOLTA magicolor 2490MF - Microsoft Internet Explorer' window. The 'Web Connection' interface has a left sidebar with 'Summary', 'TCP/IP', and 'E-mail' (highlighted). The main area has tabs for 'System', 'Fax/E-mail', and 'Network'. The 'E-mail' tab is selected, displaying the following configuration fields:

- Sender Name: magicolor 2490MF
- E-mail Address: [Empty field]
- Default Subject: From mc2490MF
- SMTP Server Address: [Empty field]
- Port Number: 25 (with a note '(1-65535)')
- Connection Timeout: 60 sec. (30-300)
- Text Insert: [Empty checkbox]

At the bottom right, there are 'Apply' and 'Clear' buttons. An 'Admin Mode: Logout' button is visible in the sidebar.

The **Network - E-mail** window allows you to configure the following items:

Item	Description
Sender Name	Specify the name of the e-mail sender when using network scanning. Range: Up to 20 characters Default: magicolor 2490MF Configuration Menu Equivalent: E-MAIL SETTING - SENDER NAME
E-mail Address	Specify the e-mail address of the e-mail sender when using network scanning. Range: Up to 64 characters Default: [Blank] Configuration Menu Equivalent: E-MAIL SETTING - E-MAIL ADDRESS

Item	Description
Default Subject	<p>Specify the subject of the e-mail message when using network scanning.</p> <p>Range: Up to 20 characters Default: From mc2490MF</p> <p>Configuration Menu Equivalent: E-MAIL SETTING - DEFAULT SUBJECT</p>
SMTP Server Address	<p>Specify the IP address or host name for the SMTP server.</p> <p>Range: Up to 64 characters Default: [Blank]</p> <p>Configuration Menu Equivalent: E-MAIL SETTING - SMTP SERVER</p>
Port Number	<p>Specify the port number communicating with the SMTP server.</p> <p>Range: 1-65535 Default: 25</p> <p>Configuration Menu Equivalent: E-MAIL SETTING - SMTP PORT NO.</p>
Connection Time-out	<p>Select the amount of time (in seconds) until the connection with the SMTP server times out.</p> <p>Range: 30-300 Default: 60</p> <p>Configuration Menu Equivalent: E-MAIL SETTING - SMTP TIMEOUT</p>

Item	Description
Text Insert	<p>Select whether or not the previously specified text is inserted into the body of the e-mail message when using network scanning.</p> <p>If "ON" is selected, the following text is inserted as the body of the e-mail message.</p> <p>text_attachment_tif: Image data(TIFF format) has been attached to the email. We recommend you use a program like "Imaging for Windows" to view the file.</p> <p>If "OFF" is selected, only the scanned image is attached, and no text is inserted into the e-mail message.</p> <p>Choices: ON, OFF Default: OFF</p>
Apply button	Applies the configuration settings for this window.
Clear button	Resets all configuration settings for this window to their user defaults.



Use alphanumeric characters (including some symbols) for the Sender Name and Default Subject. Using other characters will corrupt the characters for the e-mail destination. For details on characters that can be entered, refer to the magicolor 2490MF Printer/Copier/Scanner User's Guide.

Index

A

Administrator mode, PageScope Web Connection 37

B

BOOTP 29

C

Configuration

Network settings 18, 73

Printer, via PageScope Web Connection 38

Configuration, PageScope Web Connection 73

Counter 49

Downloading/Uploading Destination List 71

E-mail 75

Fax Configuration 63

Fax/E-mail 52

Group Dial Setting 61

Initialize 48

One-Touch Dial Setting 52

Reset Printer 47

Save Setting 46

Speed Dial Setting 57

Summary (Network) 72

Summary (System) 38

Consumables, PageScope Web Connection 43

Counter, PageScope Web Connection 49

D

Details, PageScope Web Connection 40

Consumables 43

Input tray 40

Network 42

DHCP 25, 29

DNS 29

**Downloading/Uploading Destination
List, PageScope Web
Connection** 71

E

**E-mail, PageScope Web
Connection** 75

**Energy saver, PageScope Web
Connection** 44

Ethernet interface 25

F

**Fax Configuration, PageScope Web
Connection** 63

**Fax/E-mail, PageScope Web
Connection** 52

G

Gateway 21, 25
Manual setting 26

**Group Dial Setting, PageScope Web
Connection** 61

H

Host table 33

HTTP 30

I

**Initialize, PageScope Web
Connection** 48

**Input tray, PageScope Web
Connection** 40

IP address 19, 25
Manual setting 26

L

LSU 2

N

Network connection 24

Address setting 26
Ethernet interface 25
Making connections 25
Theory 24
Using DHCP 25

Network menu 18

Accessing 19
Gateway 21
IP address 19
Overview 18
Subnet mask 20
Using options 19

Network printing 29

Network setting 18

**Network, PageScope Web
Connection** 42
Configuration 72

O

**One-Touch Dial Setting, PageScope
Web Connection** 52

**Online assistance, PageScope Web
Connection** 50

P

PageScope Web Connection 32

Administrator mode 37
Consumables 43
Counter 49
Current status 37
Details 40
Display language 32
Downloading/Uploading Destination
List 71
E-mail 75
Fax Configuration 63
Fax/E-mail 52
Group Dial Setting 61
Initialize 48
Navigation 36
One-Touch Dial Setting 52
Printer configuration 38

- Requirements 32
- Reset Printer 47
- Save Setting 46
- Speed Dial Setting 57
- Summary (Network) 72
- Summary (System) 38
- User mode 37
- Window 36

**Preference, PageScope Web
Connection 44**

Printer name 33

Protocols, network

- BOOTP 29
- DHCP 29
- HTTP 30
- Port 9100 30
- TCP/IP 30

R

**Refresh rate, PageScope Web
Connection 44**

**Reset Printer, PageScope Web
Connection 47**

S

**Save Setting, PageScope Web
Connection 46**

SMTP 30

**Speed Dial Setting, PageScope Web
Connection 57**

Subnet mask 20, 25
Manual setting 26

**Summary (Network), PageScope Web
Connection 72**

**Summary (System), PageScope Web
Connection 38**

**System, PageScope Web Connection
38**
Details 40
Online assistance 50
Preference 44

T

TCP/IP 30

U

**User mode, PageScope Web
Connection 37**

W

Web page, printer 33
Browser 33
Printer name 33

