

Oracle Discrete Cost Management Information Discovery



KEY BUSINESS BENEFITS

Actionable insight into period close bottlenecks and assisted accounting reconciliation.

Rapidly identify pending transactions and incomplete accounting that will delay period close

- Mitigate period close road blocks and achieve timely period close
- Monitor and track all ongoing transactions and accountings
- Accurate and reconciled financial books
- Gain confidence in accuracy of
- Inventory and WIP valuations
- Improved financial reporting efficiency
- Increased focus on business insight
- Enhanced landed cost management for product profitability
- Source efficiently with visibility into charges and taxes

Oracle Cost Management Information Discovery is a new revolutionary information discovery application from the Oracle E-Business Suite that allows users to discover transactions and related accounting information in real time thereby providing opportunity to effectively manage the period close process, reconcile accounting ensuring accuracy across subledgers, as well extract valuable business insights from the landed cost information for better sourcing decisions and enhanced item margin control.

Empower Users with Visibility and Flexibility

Oracle Cost Management Information Discovery is an exciting new innovation in the way supply chain transactions and accounting is managed and reconciled. Oracle Cost Management Information Discovery provides user interfaces, Period health Check and Transaction Accounting Register during the period close process. Period Health Check helps to discover transactions that are either preventing or delaying period close. Transaction Accounting Register assists in reconciliation of accounting for all supply chain subledgers. In a traditional user experience, user would need to know specifically what they were looking for, whereas Information Discovery applications now present the user with intuitive UI with cutting edge visualization to perform in depth search and investigation

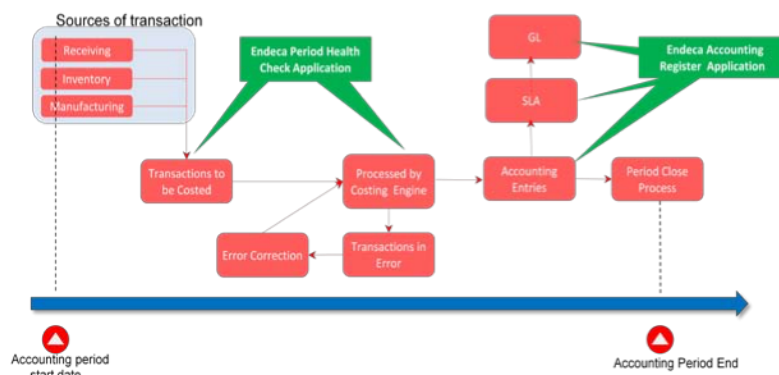


Figure 1: Cost Management Overview

Powerful Tool to Ensure On-time Period Close

Period health check provides a single consolidated user interface to review and manage transactions impacting the period close from all supply chain transaction sources

KEY FEATURES

- Identify and mitigate period close bottleneck in real time
- Accelerate reconciliation activities with guided searches
- Cutting edge data discovery technology with mobility
- Fully integrated with E-Business Suite

(Inventory, Manufacturing, Receiving, Shipping, Landed Cost Management, Enterprise Asset management). Period Health Check also allows users to view transactions across as multiple organizations at the same time secured by user's access control. Currently a user has to navigate to many different user interfaces components to look at transactions from single sources and is restricted to information from only a single organization at a time. Period health check significantly improves the user productivity as well as user experience by consolidating information from different supply chain transaction sources and organizations into a single user interface.

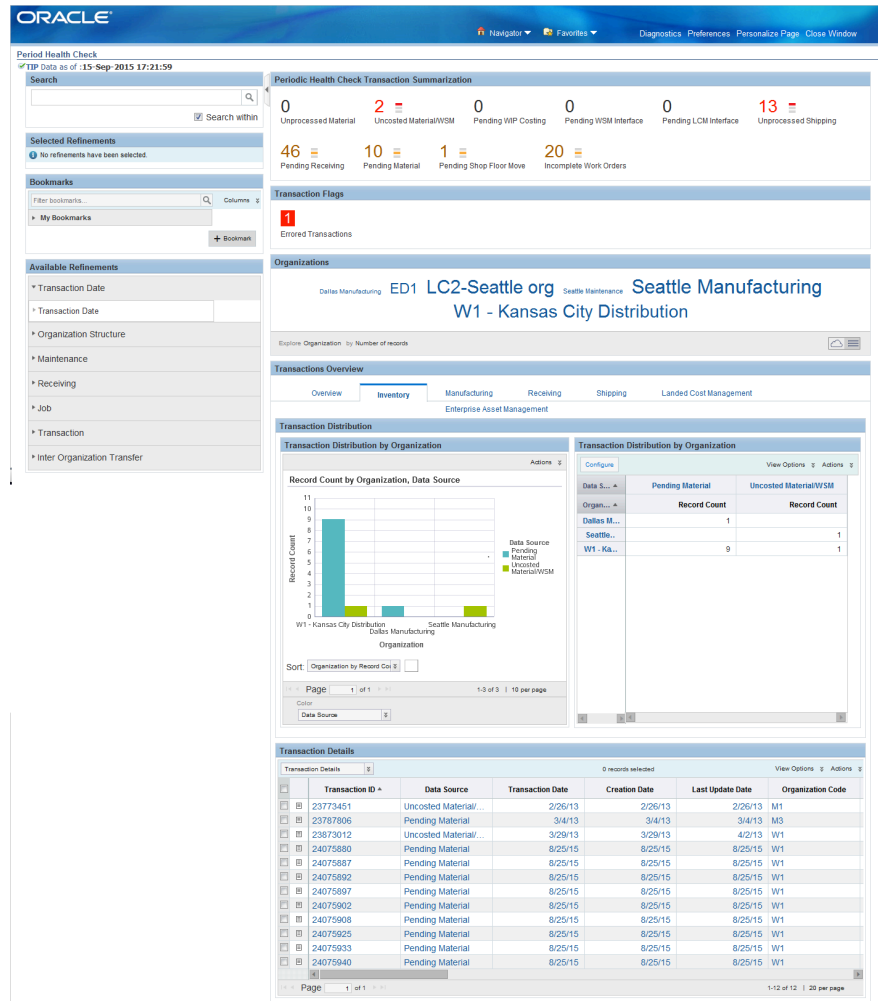


Figure 2: Period Health Check.

Period Health Check improves the efficiency around period close activities by allowing users to manage and mitigate potential delays around period close. It helps users to:

- Rapidly identify pending transactions and incomplete accountings that will delay period close
- Enable Cost accountants to prioritize and resubmit backlog transactions
- Track issues to completion
- Monitor and track all ongoing transactions and accountings
- Enable users to close periods on-time to meet stringent deadlines
- Ability to report correct and accurate valuations of Inventory and WIP

Consolidated Overview for Accounting for Quick Reconciliation

Transaction accounting register provides a single consolidated user interface to review and manage accounting for transactions from Material, Manufacturing, Receiving, and Write-off subledgers. It also allows users to view transactions across as many organizations as permitted by security access control. This significantly improves the user productivity as well as experience as currently the user has to navigate to as many user interfaces for different transaction sources as well as only a single organization information can be seen at a time.

The transaction accounting register helps improve the financial management during the period close process. It helps to:

- Investigate and reconcile accounting in various supply chain subledgers
- Improve financial reporting efficiency
- Increased focus on business insight
- Enhanced tracking of transaction accounting across organizations using intuitive search
- Single UI for viewing all accounting for a document that affects multiple subledgers and organizations, for example global purchase orders and work orders
- Accounting reconciliation of Inventory/ WIP/ Procurement subledgers with SLA and GL

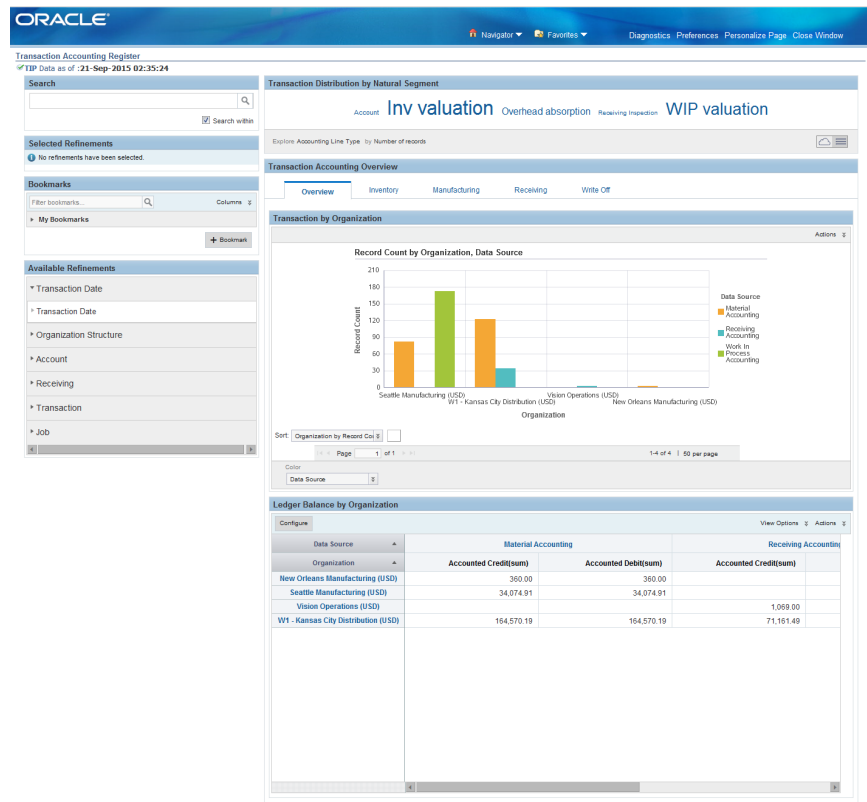


Figure 3: Transaction Accounting Register

Landed Cost Analysis

The landed cost analysis page provides an in-depth understanding of the item landed costs across the inventories. The rich and detailed information collected from the Landed Cost Management application enables managers to get valuable business insights from landed cost data without the need of predefined questions and analytical path.

The Landed Cost Analysis page helps the cost managers to:

- Immediately know the most expensive items considering the total landed costs.
- Drive costing and operational decisions to protect the contribution margin of most impacting items.
- Quickly identify the invested amounts in charges during the procurement cycle, and prioritize the negotiation actions based on the most expensive items and categories.
- Review the historical landed cost profile for items to identify trends and compare the results across multiple dimensions like categories, suppliers, or country of origin and have the necessary visibility into charges and taxes to source efficiently.
- Track how accurate is the landed cost estimation process by closely following variances against the actual invoiced amounts to drive supplier management and internal process reviews based on consistent and robust information.

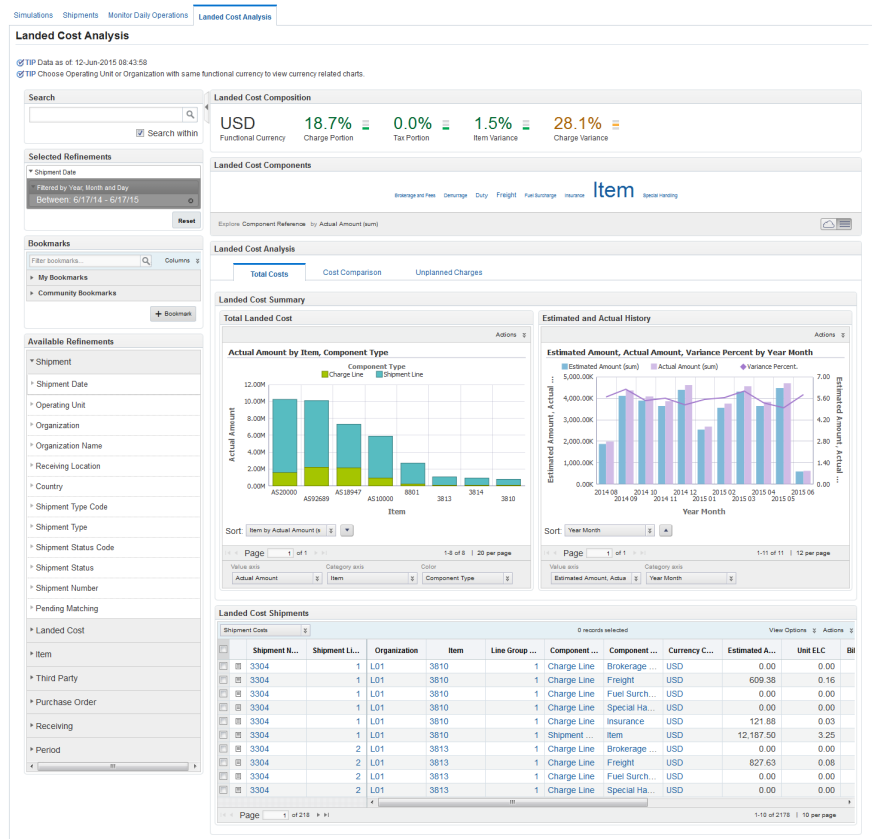


Figure 5: Landed Cost Analysis

Monitor Daily Operations

The Monitor Daily Operations page provides detailed landed cost information for the Landed Cost Management users to quickly identify transactions that need to be

corrected or require additional actions to complete the Landed Cost shipment lifecycle.

The Monitor Daily Operations helps the users to:

- Identify LC shipments with pending user actions
- Quickly find LC shipments
- Track variances
- Find unbilled LC shipments

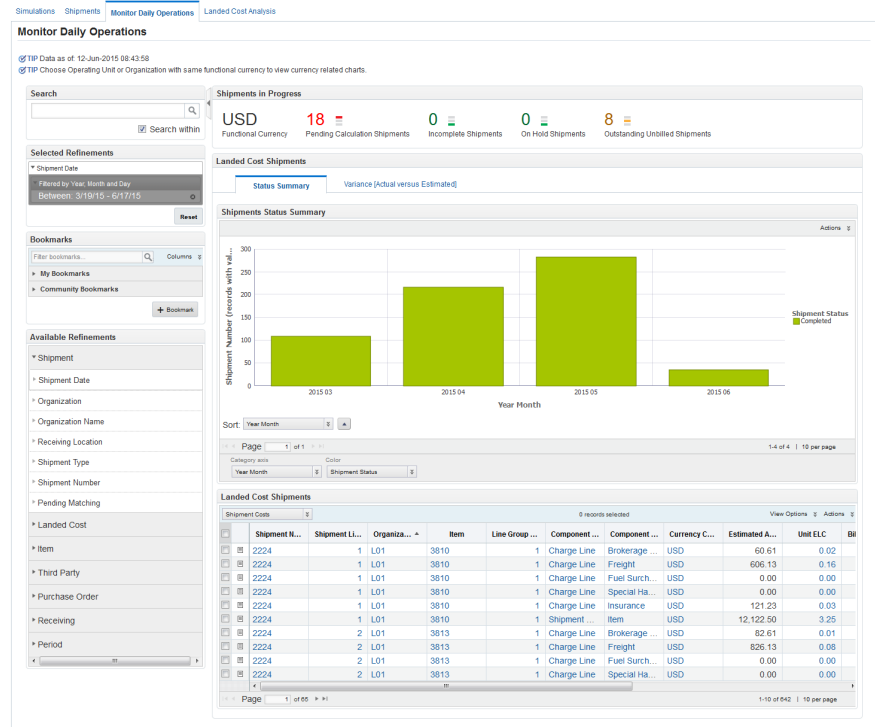


Figure 5: Monitor Daily Operations

Cutting Edge Data Discovery Technology with Mobility

The Oracle Cost Management Information Discovery leverages the cutting edge Endeca technologies, such as in-memory data discovery, type ahead Google like search for transaction and accounting information, interactive summary charts and tag clouds, guided navigation for data exploration and refinements, results presented in a rich modern user interface with mobility that can significantly improve the user productivity and efficiency around period close.

Fully Integrated with E-Business Suite Discrete Manufacturing and MES

The Oracle Cost Management Information Discovery seamlessly integrates with Oracle E-Business Suite 12.1.3 and above Cost Management and provides a rich user experience for Oracle Cost Management users. The application provides the navigation gateway for users to the transactions and accounting impacting period close to take necessary actions quickly. The integration automatically honors the organization access data security configured in E- Business Suite while securely displaying the information

from the Endeca data discovery application user interface components.



CONTACT US

For more information about Oracle Discrete Cost Management Information Discovery, visit oracle.com or call +1.800.ORACLE1 to speak to an Oracle representative.

CONNECT WITH US



blogs.oracle.com/oracle



facebook.com/oracle



twitter.com/oracle



oracle.com

Integrated Cloud Applications & Platform Services

Copyright © 2015, Oracle and/or its affiliates. All rights reserved. This document is provided for information purposes only, and the contents hereof are subject to change without notice. This document is not warranted to be error-free, nor subject to any other warranties or conditions, whether expressed orally or implied in law, including implied warranties and conditions of merchantability or fitness for a particular purpose. We specifically disclaim any liability with respect to this document, and no contractual obligations are formed either directly or indirectly by this document. This document may not be reproduced or transmitted in any form or by any means, electronic or mechanical, for any purpose, without our prior written permission.

Oracle and Java are registered trademarks of Oracle and/or its affiliates. Other names may be trademarks of their respective owners.

Intel and Intel Xeon are trademarks or registered trademarks of Intel Corporation. All SPARC trademarks are used under license and are trademarks or registered trademarks of SPARC International, Inc. AMD, Opteron, the AMD logo, and the AMD Opteron logo are trademarks or registered trademarks of Advanced Micro Devices. UNIX is a registered trademark of The Open Group. 0915



Oracle is committed to developing practices and products that help protect the environment