



SOLUTION PROFILE

## Hitachi Data Systems Shared Storage and Adobe® Anywhere for Video

### Collaborative Workflow Platform Supports Enterprise-Level Video Production

Together, Adobe Anywhere and Hitachi storage allow editors, visual effects artists and other video professionals to work simultaneously on shared projects with remotely stored media. There's no need for heavy file transfers, duplicate media, or proxy files.

Adobe Anywhere is a collaborative workflow platform that enables deep collaboration for enterprise-level video production workflows. Adobe Anywhere operates across standard networks and requires no proprietary hardware. For complete control and security, it is hosted on-premises with other enterprise media storage and asset management infrastructure. Its collaboration capabilities are embedded directly in the latest versions of Adobe Premiere Pro CC, Prelude CC, and After Effects CC.

## SOLUTION PROFILE

The Adobe Anywhere platform contains 2 types of components: a single Collaboration Hub and multiple Mercury Streaming Engines. The Mercury Streaming Engine is an Adobe technology that enables network clients to smoothly play back multiple instances of high-resolution video assets. By adding more Mercury Streaming Engines to the system, it can scale to support larger workgroups. Adobe Anywhere is located in an organization's data center, alongside a centralized storage system such as Hitachi NAS Platform and the organization's media asset management (MAM) system of choice (see Figure 1).

### Adobe Anywhere Solution With Hitachi File and Content Platforms

The Hitachi Data Systems media storage portfolio spans from the Hitachi NAS Platform (HNAS) family to the highly scalable and reliable distributed object storage Hitachi Content Platform (HCP) and the intelligent, easy-to-manage Hitachi Unified Storage (HUS) family. HNAS is an advanced and integrated network attached storage (NAS) solution. It is a tool for file sharing as well as file server consolidation, data protection and NAS workloads. HNAS offers best-in-class performance and scalability for unstructured data consolidation, multiprotocol file sharing, backup, replication, archive and disaster recovery. It offers industry-leading performance to drive stunning improvements in rendering speeds and dramatically reduce artist wait times, from file transfers to downloading shadow masks. Performance benefits in the Adobe Anywhere environment include low latencies, fast encode and render times, and rapid connections between the Mercury Streaming Engines and the storage.

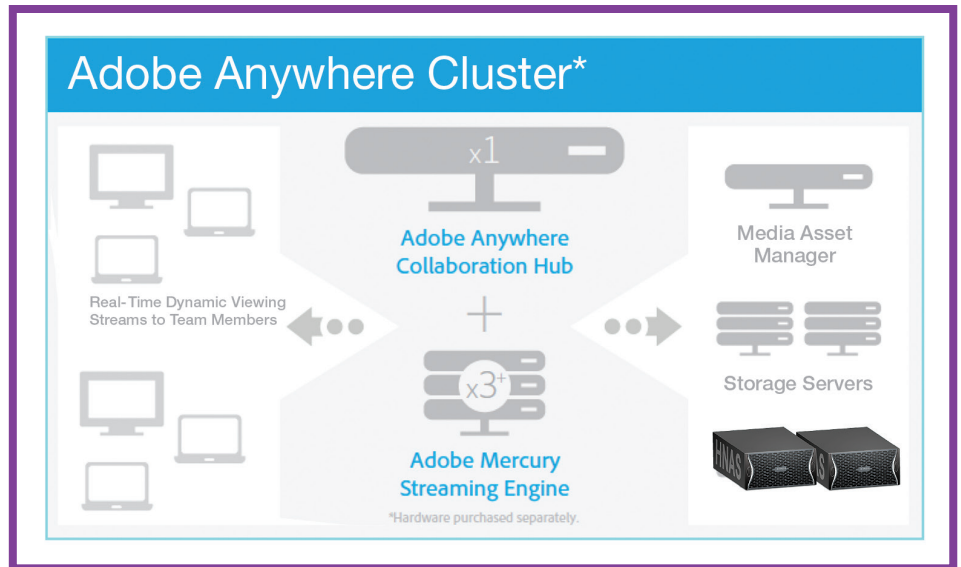


Figure 1. Adobe Anywhere Cluster With Hitachi Storage Servers

Together, Adobe Anywhere and Hitachi storage allow editors, visual effects artists and other video professionals to work simultaneously on shared projects with remotely stored media. There is no need for heavy file transfers, duplicate media or proxy files.

### Collaborative Media Production for Small and Large Media Environments

A MAM system is typically used to manage the content value chain, from content ingestion through production all the way to archive and content distribution. Multiple MAM systems supported by Hitachi also integrate natively with Adobe Anywhere and can be used to create custom workflows via the Anywhere API. Hitachi NAS Platform and Hitachi Content Platform together provide a unique combination of production and archive storage with built-in policy-based tiering of content. Connections between the Mercury Streaming Engines and HNAS are via standard CIFS interface. The streaming engines host local instances of Premiere

Pro and provide access to mounted HNAS volumes. Client applications can access Anywhere productions over any workstation connected to the Anywhere servers within a local area network or over the Internet via virtual private network (VPN). The applications can manage tasks such as media ingest, export and conversion. Figure 2 shows the architectural diagram of this joint solution.

The Hitachi NAS Platform solution for Adobe Anywhere offers application users tremendous choice in scaling for either small or extremely large productions. The NAS gateway can add multiple nodes to scale throughput or add more storage behind a single node to scale capacity. Our hybrid-core architecture delivers sustainable performance at scale. It concurrently handles random and sequential I/O needed for simultaneous rendering and playout tasks. Each HNAS node supports more than 100K IOPS and up to 1500MB/sec throughput, while the storage back end can scale to multiple petabytes.

### Conclusion

Hitachi NAS Platform provides the ideal bandwidth, low latency, IOPS and storage capacity required to support the Adobe Anywhere for video collaborative workflow platform. Together, HNAS and Adobe Anywhere allow content creators to access and collaborate on shared content from virtually any location with network connectivity.

The Hitachi NAS Platform solution for Adobe Anywhere offers application users tremendous choice in scaling for either small or extremely large productions.

The combined solution from Hitachi Data Systems and Adobe leverages open IT to decrease total cost of ownership (TCO). It helps lower training and maintenance costs, as end users don't have to learn new video software tools. And, the solution is agile: It makes system upgrades simple and enables new technologies to be added more quickly. Benefits include:

- Fully integrated, tested and qualified solution.
- High-performance back end to support the most demanding nonlinear editing (video editing) and graphics requirements. Optimized for Microsoft® Windows® asynchronous I/O and reads from media files.
- Highly scalable in performance and storage capacity with guaranteed throughput exceeding 600MB/sec and exceeding a minimum of 6 simultaneous connections.
- Solutions for enterprise media environments, including video ingest, composition, post production, transcoding, video delivery and video archival.

## About Hitachi Data Systems

Hitachi Data Systems provides information technologies, services and solutions that help companies improve IT costs and agility, and innovate with information to make a difference in the world. Our customers run media workflows from ingest to content delivery, and they gain compelling return on investment (ROI), unmatched return on assets (ROA), and demonstrable business impact. With approximately 6,300 employees worldwide, Hitachi Data Systems has over 1000 customers in the media, communications, and broadcast sectors on 5 continents. Hitachi Data Systems does business in more than 100 countries and regions. Our products, services and solutions are trusted by the world's leading enterprises, including more than 70% of the Fortune 100 and more than 80% of the Fortune Global 100. Visit us at [www.HDS.com](http://www.HDS.com).

**INNOVATE**  
WITH INFORMATION™

[www.HDS.com/innovate](http://www.HDS.com/innovate)

Innovation is the engine of change, and information is its fuel. Innovate intelligently to lead your market, grow your company, and change the world. Manage your information with Hitachi Data Systems.

## About Adobe Systems Incorporated

Adobe is changing the world through digital experiences. For more information, visit [www.adobe.com](http://www.adobe.com). For more information about Adobe Anywhere, visit [www.adobe.com/go/anywhere](http://www.adobe.com/go/anywhere).

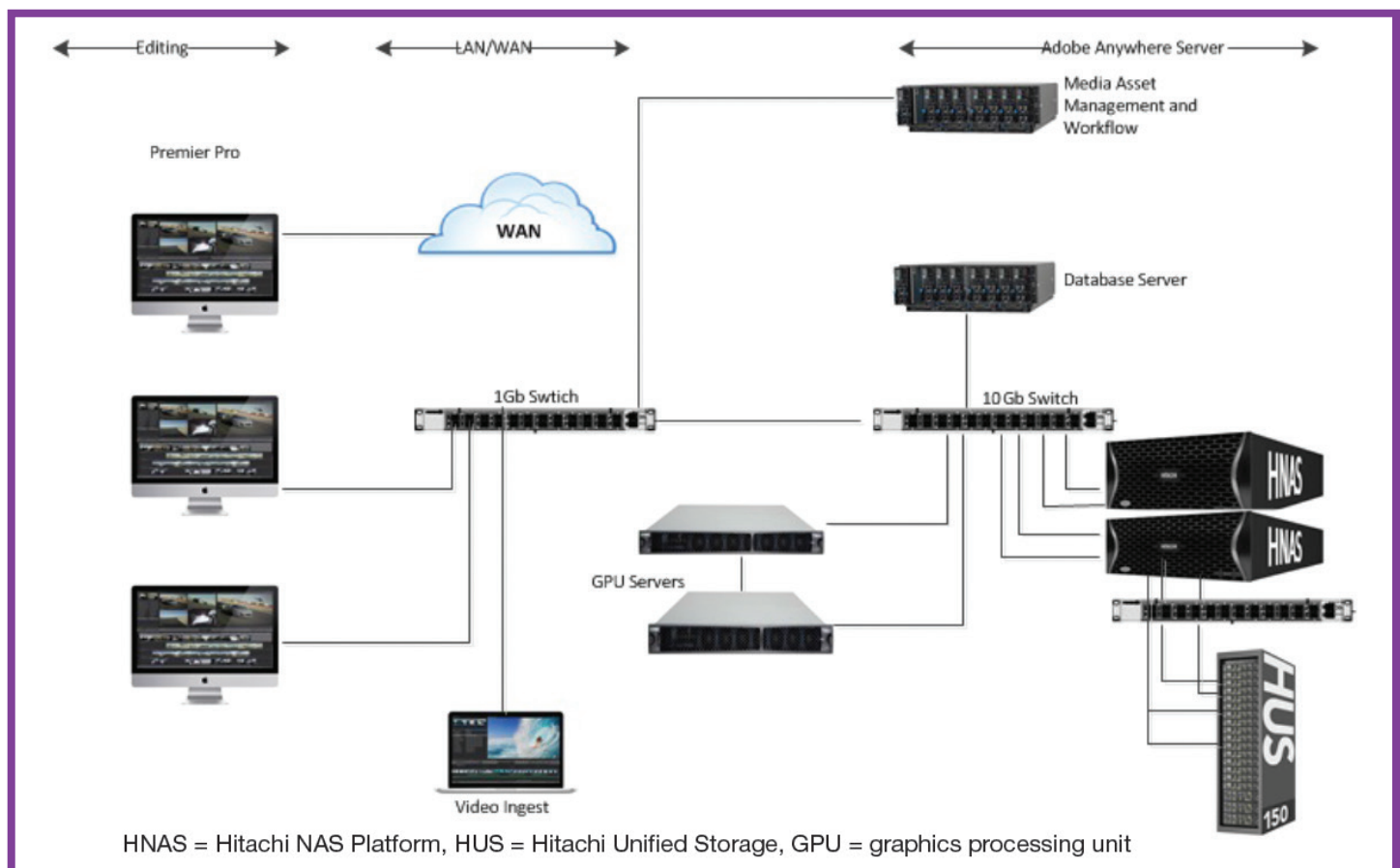


Figure 2. Adobe Anywhere Solution Architecture With Hitachi Storage



---

**Corporate Headquarters**

2845 Lafayette Street  
Santa Clara, CA 95050-2639 USA  
[www.HDS.com](http://www.HDS.com) [community.HDS.com](http://community.HDS.com)

**Regional Contact Information**

**Americas:** +1 408 970 1000 or [info@hds.com](mailto:info@hds.com)  
**Europe, Middle East and Africa:** +44 (0) 1753 618000 or [info.emea@hds.com](mailto:info.emea@hds.com)  
**Asia Pacific:** +852 3189 7900 or [hds.marketing.apac@hds.com](mailto:hds.marketing.apac@hds.com)

© Hitachi Data Systems Corporation 2014. All rights reserved. HITACHI is a trademark or registered trademark of Hitachi, Ltd. Microsoft and Windows are trademarks or registered trademarks of Microsoft Corporation. All other trademarks, service marks, and company names are properties of their respective owners.

Notice: This document is for informational purposes only, and does not set forth any warranty, expressed or implied, concerning any equipment or service offered or to be offered by Hitachi Data Systems Corporation.

SP-184-A DG April 2014