

GOLDELOX

Embedded Graphics Processor

SERIAL COMMAND REFERENCE

Document Revision: 2.1
Document Date: 22nd March 2019

Table of Contents

1. Goldelox Processor.....	5
2. Introduction to Workshop4 - Serial Environment.....	6
2.1. How to Configure Goldelox as a Serial Slave.....	6
2.2. Additional Configuration Parameters for Serial Communication.....	7
2.3. Host Interface	8
2.4. Introduction and Guidelines to the Serial Protocol	8
2.5. Power-Up and Reset	8
2.6. Splash Screen.....	8
3. The Serial Command Set - Explained.....	9
3.1. Example 1 – Moving the Cursor	9
3.2. Example 2 – Drawing a Hollow Rectangle	9
4. Using Serial with a Library	10
4.1. Available Libraries	10
4.2. Benefits to using a Library	10
4.3. Basic Example of using a library	10
4.4. Library References.....	10
5. Goldelox Serial Commands.....	11
5.1. Text and String Commands	11
5.1.1 Move Cursor	12
5.1.2 Put Character.....	13
5.1.3 Put String	14
5.1.4 Character Width	15
5.1.5 Character Height	16
5.1.6 Text Foreground Colour	17
5.1.7 Text Background Colour	18
5.1.8 Set Font	19
5.1.9 Text Width	20
5.1.10 Text Height	21
5.1.11 Text X-gap.....	22
5.1.12 Text Y-gap.....	23
5.1.13 Text Bold.....	24
5.1.14 Text Inverse	25
5.1.15 Text Italic	26
5.1.16 Text Opacity.....	27
5.1.17 Text Underline	28
5.1.18 Text Attributes.....	29

5.1.19 Set Text Parameters	30
5.2. Graphics Commands	31
5.2.1 Clear Screen.....	32
5.2.2 Change Colour	33
5.2.3 Draw Circle	34
5.2.4 Draw Filled Circle.....	35
5.2.5 Draw Line.....	36
5.2.6 Draw Rectangle	37
5.2.7 Draw Filled Rectangle.....	38
5.2.8 Draw Polyline.....	39
5.2.9 Draw Polygon	40
5.2.10 Draw Triangle	41
5.2.11 Calculate Orbit.....	42
5.2.12 Put pixel	43
5.2.13 Read Pixel	44
5.2.14 Move Origin.....	45
5.2.15 Draw Line & Move Origin	46
5.2.16 Clipping.....	47
5.2.17 Set Clip Window	48
5.2.18 Extend Clip Region.....	49
5.2.19 Background Colour	50
5.2.20 Outline Colour	51
5.2.21 Contrast	52
5.2.22 Frame Delay.....	53
5.2.23 Line Pattern	54
5.2.24 Screen Mode	55
5.2.25 Set Graphics Parameters	56
5.3. Media Commands (SD/SDHC Memory Cards)	57
5.3.1 Media Init	58
5.3.2 Set Byte Address.....	59
5.3.3 Set Sector Address.....	60
5.3.4 Read Byte.....	61
5.3.5 Read Word.....	62
5.3.6 Write Byte.....	63
5.3.7 Write Word.....	64
5.3.8 Flush Media	65
5.3.9 Display Image (RAW)	66
5.3.10 Display Video (RAW).....	67
5.3.11 Display Video Frame (RAW)	68
5.4. Memory Access Commands	69
5.4.1 Byte Peek	70
5.4.2 Byte Poke	71

5.4.3 Word Peek	72
5.4.4 Word Poke	73
5.5. GPIO Commands	74
5.5.1 Joystick	75
5.6. Sound and Tune Commands	76
5.6.1 Beep.....	77
5.7. Serial (UART) Communications Commands	78
5.7.1 Set Baud Rate	79
5.8. Image Control Commands	80
5.8.1 Blit Com to Display	81
5.9. System Commands.....	82
5.9.1 Get Display Model	83
5.9.2 Get SPE Version	84
5.9.3 Get PmmC Version	85
5.9.4 Screen Saver Timeout.....	86
5.9.5 Screen Saver Speed	87
5.9.6 Screen Saver Mode.....	88
6. Goldelox EVE System Registers Memory Map	89
7. Revision History	93
8. Legal Notice	94
9. Contact Information	94

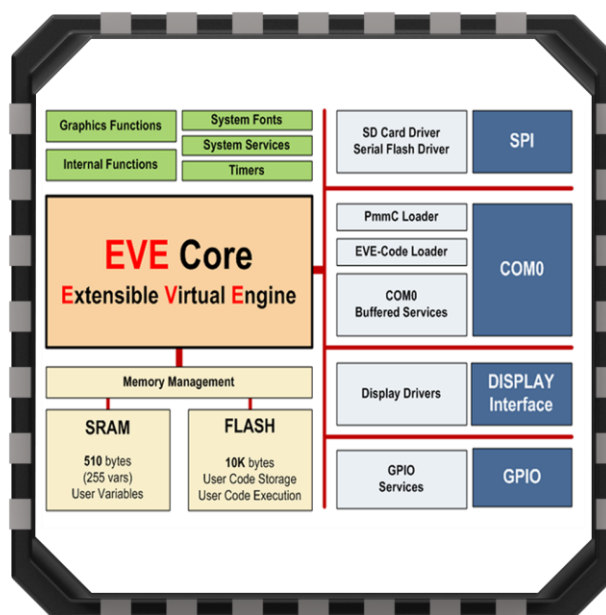
1. Goldelox Processor

The Goldelox Processor by 4D Labs is in a family of embedded graphics processors powered by a highly optimised soft core virtual engine, E.V.E. (Extensible Virtual Engine).

There are many 4D Products powered with the Goldelox processor, including:

- uOLED-96-G1
- uOLED-96-G2
- uOLED-128-G1
- uOLED-128-G2
- uOLED-160-G1
- uOLED-160-G2
- uLCD-144-G1
- uLCD-144-G2
- uTOLED-20-G2

EVE is a proprietary, high performance virtual processor with an extensive byte-code instruction set optimised to execute compiled 4DGL programs. 4DGL (4D Graphics Language) was specifically developed from ground up for the EVE engine core. It is a high level language which is easy to learn and simple to understand yet powerful enough to tackle many embedded graphics applications.



Goldelox Internal Block Diagram

The Goldelox processor used in the above products can be configured in a number of ways, depending on the needs of the user. Using 4D Labs' Workshop4 IDE, the user has the choice of 3 programming environments, Designer, ViSi and the Serial Environment.

This document targets the Serial Environment, how to configure a Display Module to be 'Serial Ready', and all the commands available in the Serial Environment to send the display from your Host Controller of choice.

For more information on the Workshop4 Software in General or the other Environments available in Workshop4, please refer to the Workshop4 User Guide, available from the 4D Labs website, www.4dsystems.com.au

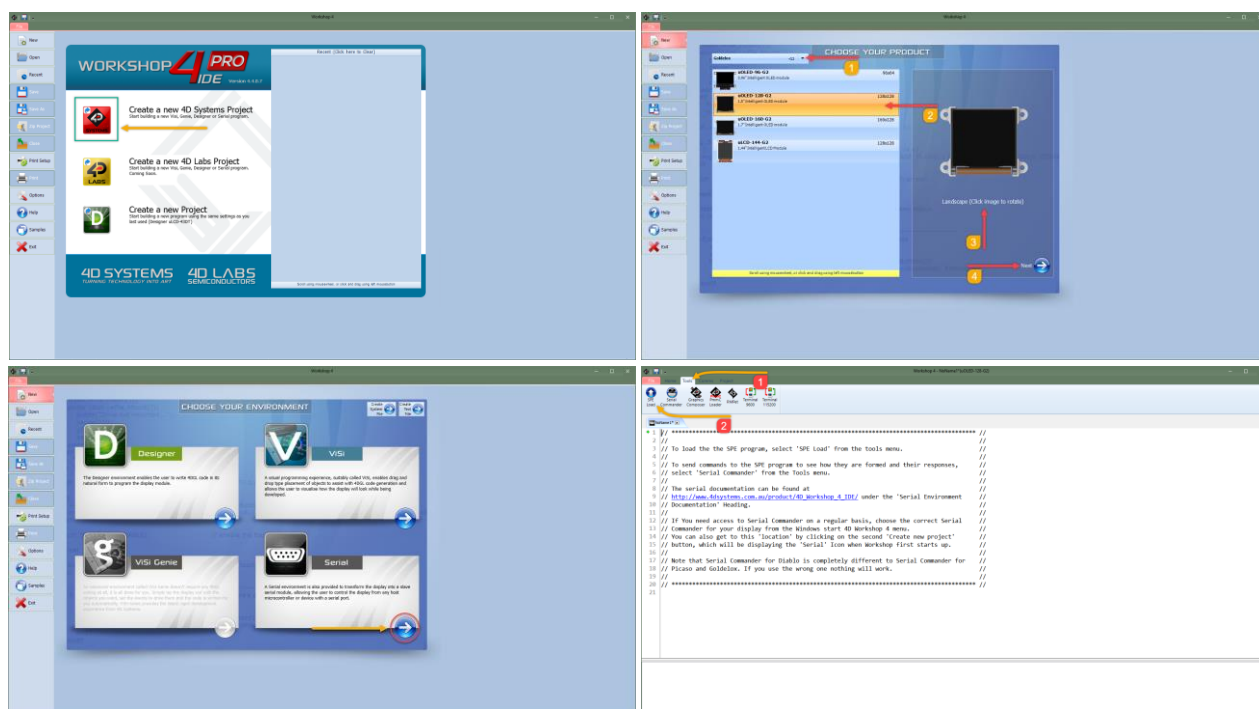
2. Introduction to Workshop4 - Serial Environment

The Goldelox Processor can be programmed to act as a 'SERIAL SLAVE' device, responding to the Serial commands sent from virtually any Host Controller.

2.1. How to Configure Goldelox as a Serial Slave

To set up your processor to be a Serial Display is a very simple process.

When a user starts the Workshop4 IDE, starts a new project, selects their module of choice, and then selects the Serial Environment, the user is presented with a basic environment to get them started using their chosen product as a Serial Slave.



In the 'Tools' menu of the Serial Environment, is a button called 'SPE Load'. SPE stands for "Serial Platform Environment". If your display module is connected to the PC via the 4D Systems Programming Cable, clicking this button will load a special 4DGL application onto your module. This application is known as the SPE Application, and will enable your chosen module to run as a Serial Slave.

Note: The Display Modules are **SPE READY** by default, meaning the SPE Application has been loaded to each of the modules at the 4D Systems Factory. The user can reload the **SPE Application** if required, to update the **SPE Application** on board OR to move over to the **Serial Environment** from another Workshop4 Environment such as Designer, ViSi or ViSi-Genie (Picasso Only)

Once the Goldelox-powered display is 'SPE READY', either brand new out of the box, or programmed to have the SPE Application via the above instructions, the user can begin programming their Host of choice to communicate to the 4D Labs processor.

2.2. Additional Configuration Parameters for Serial Communication

When the SPE Application is loaded to the processor, the Baud Rate is set to the initial default of 9600. This initial Baud Rate can be modified, so when the Display Module starts up, it is at the desired Baud Rate without having to send commands to change it from the Host.

Similarly, Screen Saver default settings such as Screen Saver Mode, Speed and Delay could be adjusted. Screen saver settings depend on the Display Driver IC. Not all the displays/drivers offer this feature.

To change the default Baud Rate and Screen Saver default settings click on the Option button on the buttons down the left hand side of the Workshop4 IDE, click on the Serial tab, and change the 'Serial Environment Initial Baud Rate' and default Screen Saver settings to be whatever is suitable for your application.



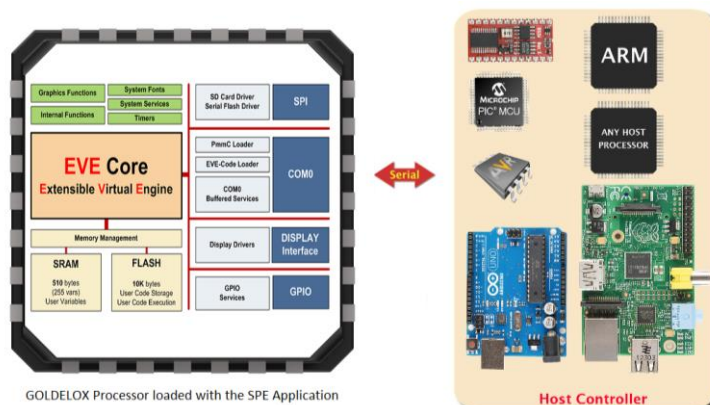
Note: The initial Baud rate and 'slowdown' settings for slow systems can be set under 'options', 'serial' before loading SPE.

Once the desired Baud Rate has been set, along with any 'Slowdown' delay (where required), the Display Module needs to have the SPE Application loaded once again, so these settings can take effect.

Simply follow the instructions in [Section 2.1](#), to load the updated SPE Application onto the Display Module.

2.3. Host Interface

When a processor is loaded with the SPE Application, it enables communication to a Serial Host over a bidirectional serial interface via its Serial UART. All communications between the host and the device occur over this serial interface. The protocol is simple and easy to implement.



Note: Serial Data Format: 8 Bits, No Parity, 1 Stop Bit. Serial data is true and not inverted.

2.4. Introduction and Guidelines to the Serial Protocol

The Serial Protocol used with the SPE Application is a set of commands with associated parameters, to enable the Host Controller to display primitives, text, images, play audio, video or data log to micro-SD card, receive touch events etc on the 4D Systems Display Module, in the simplest manner available.

The Serial Protocol is made up of commands and parameters, sent over the Serial Port in byte format to the Display Module. Each command is unique, and has a specific set of parameters associated with it. Each command that is sent to the Display Module is replied to with a response. Some commands do not specifically require a response, so for these commands the Display will reply with an Acknowledge once successfully executed.

Commands that require a specific response may send back a varying number of bytes, depending on the command and what the response is.

Each Command sent to the display will require a certain amount of time before the response is sent, again dependent on the command and the operation that has to be performed.

Commands should only be sent and their response received, before another command is sent. If two commands are sent before the first response is received, incorrect operation may follow.

2.5. Power-Up and Reset

When the Goldelox processor comes out of a power-up or external reset, a sequence of events is executed internally. The user should wait about 3 seconds for the start-up to take place before attempting to communicate with the module.

2.6. Splash Screen

The splash screen appears on the screen 5 seconds after the start-up routines have been executed, provided there has been no serial activity. Therefore as per [Section 2.5](#), the splash screen should appear after approximately 8 seconds from power up or reset. Communications doesn't have to wait for the Splash screen to appear.

3. The Serial Command Set - Explained

The Serial Protocol and associated Commands enable the user to send bytes serially from the chosen Host Controller, to the 4D Display module loaded with the SPE Application, and control or receive information from, the Display Module.

In the GoldeLOX Serial Protocol Command Set, there are currently 71 Commands available to the user. Each command send to the Display Module will incur a response of some description from the Display Module. This may be in the form of data, or a simple ACK that the command has been received.

Here is an example to better illustrate a few commands.

3.1. Example 1 – Moving the Cursor

Aim: Moving the Cursor to a specific location on the display, so text can originate from that point.

MoveCursor Command: HEX 0xFFE4 (2 bytes) – (Library Function txt_MoveCursor)

MoveCursor Parameters: Line Number (2 bytes), Row Number (2 bytes)

MoveCursor Returns: Acknowledge HEX 0x06

To Move the Cursor to Line Number=7, Row Number=12, firstly the 7 and 12 need to be converted into bytes. 7 is 0x07 and 12 is 0x0C. Because the command requires 2 bytes for each of these parameters to be sent, the first byte in this example will be 0x00 for both the Line and the Row.

The Bytes that will need to be sent will be: **0xFF, 0xE4, 0x00, 0x07, 0x00, 0x0C**

The Bytes that will be received back from the display will be: **0x06**

Note: Separation commas ',' between bytes that are shown in the Bytes to Send, and the Bytes Received syntax are purely for legibility purposes in this document and must not be considered as part of any transmitted/received data unless specifically stated.

3.2. Example 2 – Drawing a Hollow Rectangle

Aim: Draw a Hollow Rectangle at a specific location on the display, with a specific outline colour

Rectangle Command: HEX 0xFFCF (2 bytes) – (Library Function gfx_Rectangle)

Rectangle Parameters: X1 Position (2 bytes), Y1 Position (2 bytes), X2 Position (2 bytes), Y2 Position (2 bytes), Colour (2 bytes)

Rectangle Returns: Acknowledge HEX 0x06

To draw a Blue rectangle starting with the top left corner at X=10, Y=20 and the bottom right corner at X=80, Y= 80, firstly the 10, 20 and 80 numbers need to be converted into bytes.

10 is 0x0A, 20 is 0x14 and 80 is 0x50. Because the command requires 2 bytes for each of these parameters to be sent, the first byte in this example will be 0x00 for X1, Y1, and X2. Y2 utilises 2 bytes.

Finally, the colour needs to be sent as 2 bytes. The colour Blue is 0x001F.

The Bytes to be sent will be: 0xFF, 0xCF, 0x00, 0x0A, 0x00, 0x14, 0x00, 0x50, 0x00, 0x50, 0x00, 0x1F

The Bytes that will be received back from the display will be: **0x06**

Note: Separation commas ',' between bytes that are shown in the Bytes to Send, and the Bytes Received syntax are purely for legibility purposes in this document and must not be considered as part of any transmitted/received data unless specifically stated.

4. Using Serial with a Library

4.1. Available Libraries

4D Labs has created a set of libraries suitable for a range of microcontrollers on the market to use and communicate with 4D Systems' range of display modules, when configured to be Serial Slaves using the SPE application and the Serial Environment in Workshop4.

The following libraries have been created and are **available from the Samples menu inside the Workshop4 IDE Software**, where the Workshop4 software is available from the 4D Labs website.

- Arduino Library
- C Library
- Pascal Library
- PicAxe Library

These libraries enable the programmer to have access to all of the Serial Commands, but in a format that is more suited for High Level Programming, such as the Arduino IDE.

4.2. Benefits to using a Library

The libraries created by 4D Labs enable the user to simply include the library file in the code of their chosen Host Controller, and call high level functions (very similar and often equivalent to the 4DGL set of functions) instead of having to deal with the low level serial data bytes.

Please refer to the individual application notes on each of the libraries (as they become available), for a better understanding of what they include and how they are used in a Host controller. Refer to the Workshop4 product page on the 4D Labs website for more information, along with the modules product page.

4.3. Basic Example of using a library

If using the Arduino as the host controller of choice, by simply copying the library into the appropriate libraries folder for the Arduino IDE, and including the library in your sketch, the Arduino user will then have access to high level functions which provide many benefits over using the low level byte commands.

For example, to clear the display, and draw a rectangle from X1=0, Y1=10 to X2=50, Y2=70 in Red on the display, the following byte commands are required:

Send to the display: 0xFF, 0xCF

Receive from the display: 0x06

Send to the display: 0xFF, 0xCF, 0x00, 0x00, 0x00, 0x0A, 0x00, 0x32, 0x00, 0x46, 0xF8, 0x00

Receive from the display: 0x06

Sending these commands from the Arduino would require each byte to be sent over the serial port to the display. 4D Labs has created a library to do this for you.

Using the Arduino library for example, the following functions would be required.

Display.gfx_Cls();

Display.gfx_Rectangle(0, 10, 50, 70, RED);

4.4. Library References

While this document is specifically for the Serial Command bytes, at the bottom of each command table is a reference to the relevant function that would be called if using the 4D Labs Serial Library.

5. Goldelox Serial Commands

The following sections detail each of the commands available in the 4D Labs Serial Environment, when communicating to a 4D Systems Display Module loaded with the SPE Application. Please refer to [Section 2](#) for more information on how to do this.

5.1. Text and String Commands

The following is a summary of the commands available to be used for Text and Strings:

- Move Cursor
- Put Character
- Put String
- Character Width
- Character Height
- Text Foreground Colour
- Text Background Colour
- Set Fonts
- Text Width
- Text Height
- Text X-Gap
- Text Y-Gap
- Text Bold
- Text Inverse
- Text Italic
- Text Opacity
- Text Underline
- Text Attribute
- Set Text Parameters

5.1.1 Move Cursor

Serial Command	cmd (word), line (word), column (word)	
	cmd	0xFFE4
	line	Holds a positive value for the required line position.
	column	Holds a positive value for the required column position.
Response	acknowledge (byte)	
	acknowledge	0x06: ACK byte if successful Anything else implies mismatch between command and response.
Description	The Move Cursor command moves the text cursor to a screen position set by line and column parameters. The line and column position is calculated, based on the size and scaling factor for the currently selected font. When text is outputted to screen it will be displayed from this position. The text position could also be set with “ Move Origin ” command if required to set the text position to an exact pixel location. Note that lines and columns start from 0, so line 0, column 0 is the top left corner of the display.	
Example	Byte Stream: cmd(MSB), cmd(LSB), line(MSB), line(LSB), column(MSB), column(LSB)	
	0xFF, 0xE4, 0x00, 0x05, 0x00, 0x03 This will move the cursor to Line=5, Column=3 Where 5 as 2 bytes is 0x00 and 0x05, and 3 as 2 bytes is 0x00 and 0x03 The Response will be 0x06 if the command is successfully executed	
Library Function	txt MoveCursor	

5.1.2 Put Character

Serial Command	cmd (word), character(word)	
	cmd	0xFFFF
	character	Holds a positive value for the required character.
Response	acknowledge (byte)	
	acknowledge	0x06: ACK byte if successful Anything else implies mismatch between command and response.
Description	The Put Character command prints a single character to the display.	
Example	Byte Stream: cmd(MSB), cmd(LSB), character(MSB), character(LSB)	
	0xFF, 0xFE, 0x00, 0x39	
	This will send the character '9' (0x00, 0x39) to the display	
	The response will be 0x06 assuming the command was successful executed	
Library Function	putCH	

5.1.3 Put String

Serial Command	cmd (word), string (string)	
	cmd	0x0006
	string	Holds a Null terminated string. char0, char1, char2, ..., charN, NULL NOTE: Maximum characters in the string is 255 + NULL
Response	acknowledge (byte)	
	acknowledge	0x06: ACK byte if successful Anything else implies mismatch between command and response.
Description	The Put String command prints a string to the display and returns the pointer to the string.	
	A string needs to be terminated with a NULL.	
Example	Byte Stream: cmd(MSB), cmd(LSB), char0, char1, char2, ..., charN, NULL 0x00, 0x06, 0x48, 0x65, 0x6C, 0x6C, 0x6F, 0x00 This will send the string “Hello” to the display, as H = 0x48, e = 0x65, l = 0x6C and o = 0x6F, followed by a NULL = 0x00. The response will be 0x06 indicating ACK if the command was successful.	
Library Function	putstr	

5.1.4 Character Width

Serial Command	cmd (word), char (byte)	
	cmd	0x0002
	char	The ASCII character for the width calculation.
Response	acknowledge (byte), width (word)	
	acknowledge	0x06: ACK byte if successful Anything else implies mismatch between command and response.
	width	Width of a single character in pixel units.
Description	<p>The Character Width command is used to calculate the width in pixel units for a character, based on the currently selected font. The font can be proportional or mono-spaced. If the total width of the character exceeds 255 pixel units, the function will return the 'wrapped' (modulo 8) value.</p>	
Example	<p>Byte Stream: cmd(MSB), cmd(LSB), char</p> <p>0x00, 0x02, 0x48</p> <p>This is requesting the width in pixels of the character 'H', as ASCII 'H' is Hex 0x48</p> <p>Assuming for example the selected font is System Fonts or FONT0</p> <p>The response will be 0x06, 0x00, 0x07 where 0x00, 0x07 is Decimal 7 (FONT 0 is a 7x8 font)</p>	
Library Function	charwidth	

5.1.5 Character Height

Serial Command	cmd (word), char (byte)	
	cmd	0x0001
	char	The ascii character for the height calculation.
Response	acknowledge (byte), height (word)	
	acknowledge	0x06: ACK byte if successful Anything else implies mismatch between command and response.
	height	Height of a single character in pixel units.
Description	The Character Height command is used to calculate the height in pixel units for a character, based on the currently selected font. The font can be proportional or mono-spaced. If the total height of the character exceeds 255 pixel units, the function will return the 'wrapped' (modulo 8) value.	
Example	<p>Byte Stream: cmd(MSB), cmd(LSB), char</p> <p>0x00, 0x01, 0x48</p> <p>This is requesting the height in pixels of the character 'H', as ASCII 'H' is Hex 0x48</p> <p>Assuming for example the selected font is System Fonts or FONT0</p> <p>The response will be 0x06, 0x00, 0x08 where 0x00, 0x08 is Decimal 8 (FONT 0 is a 7x8 font)</p>	
Library Function	charheight	

5.1.6 Text Foreground Colour

Serial Command	cmd (word), colour (word)	
	cmd	0xFF7F
	colour	Specifies the colour to be set.
Response	acknowledge (byte)	
	acknowledge	0x06: ACK byte if successful Anything else implies mismatch between command and response.
Description	The Text Foreground Colour command sets the text foreground colour.	
Example	Byte Stream: cmd(MSB), cmd(LSB), colour(MSB), colour(LSB) 0xFF, 0x7F, 0x00, 0x10 This is setting the Foreground colour to Navy, which is Hex 0x00, 0x10 The Response will be 0x06 if the command is successfully executed	
Library Function	txt_FGcolour	

5.1.7 Text Background Colour

Serial Command	cmd(word), colour(word)	
	cmd	0xFF7E
	colour	Specifies the colour to be set.
Response	acknowledge (byte)	
	acknowledge	0x06: ACK byte if successful Anything else implies mismatch between command and response.
Description	The Text Background Colour command sets the text background colour.	
Example	Byte Stream: cmd(MSB), cmd(LSB), colour(MSB), colour(LSB) 0xFF, 0x7E, 0xF8, 0x00 This is setting the Background colour to Red, which is Hex 0xF8, 0x00 The Response will be 0x06 if the command is successfully executed.	
Library Function	txt_BGcolour	

5.1.8 Set Font

Serial Command	cmd (word), id (word)	
	cmd	0xFF7D
	id	0 for System font (Default Fonts) 7 for Media fonts
Response	acknowledge (byte)	
	acknowledge	0x06: ACK byte if successful Anything else implies mismatch between command and response.
Description	<p>The Set Font command sets the required font using its ID.</p> <p>To set the external fonts (media fonts), “Set Sector Address” should be used to set the sector address of the font data saved on the uSD card. The Sector address could be found from the include file generated by the 4D Workshop4 IDE when a string object is dropped on to the screen and the file is compiled to write the Fonts data to the uSD card. Check the Application Note 4D-AN-00084 for further details.</p>	
Example	<p>Byte Stream: cmd(MSB), cmd(LSB), id(MSB), id(LSB)</p> <p>0xFF, 0x7D, 0x00, 0x07</p> <p>This will set the font to be media fonts which is 0x00, 0x07</p> <p>The response will be 0x06 if the command is successfully executed.</p>	
Library Function	txt_FontID	

5.1.9 Text Width

Serial Command	cmd (word), multiplier (word)	
	cmd	0xFF7C
	multiplier	Width multiplier 1 to 16 (Default =1)
Response	acknowledge (byte)	
	acknowledge	0x06: ACK byte if successful Anything else implies mismatch between command and response.
Description	The Text Width command sets the text width multiplier between 1 and 16.	
Example	Byte Stream: cmd(MSB), cmd(LSB), multiplier(MSB), multiplier (LSB)	
	0xFF, 0x7C, 0x00, 0x05 This will set the Text Width to be 5x that of the default. The Response will be 0x06 if the command is successfully executed	
Library Function	txt_Width	

5.1.10 Text Height

Serial Command	cmd (word), multiplier (word)	
	cmd	0xFF7B
	multiplier	Height multiplier. 1 to 16 (Default =1)
Response	acknowledge (byte)	
	acknowledge	0x06: ACK byte if successful Anything else implies mismatch between command and response.
Description	The Text Height command sets the text height multiplier between 1 and 16.	
Example	Byte Stream: cmd(MSB), cmd(LSB), multiplier(MSB), multiplier (LSB)	
	0xFF, 0x7B, 0x00, 0x02	
	This will set the Text Height to be 2x that of the default.	
	The Response will be 0x06 if the command is successfully executed.	
Library Function	txt_Height	

5.1.11 Text X-gap

Serial Command	cmd (word), pixelcount (word)	
	cmd	0xFF7A
	pixelcount	0 to 32(Default =0)
Response	acknowledge (byte)	
	acknowledge	0x06: ACK byte if successful Anything else implies mismatch between command and response.
Description	The Text X-gap command sets the pixel gap between characters (x-axis), where the gap is in pixel units.	
Example	Byte Stream: cmd(MSB), cmd(LSB), pixelcount(MSB), pixelcount(LSB)	
	0xFF, 0x7A, 0x00, 0x02 This will set the text X-Gap to be 2 pixels, where 2 pixels is 0x00, 0x02 The Response will be 0x06 if the command is successfully executed.	
Library Function	txt Xgap	

5.1.12 Text Y-gap

Serial Command	cmd (word), pixelcount (word)	
	cmd	0xFF79
	pixelcount	0 to 32(Default =0)
Response	acknowledge (byte)	
	acknowledge	0x06: ACK byte if successful Anything else implies mismatch between command and response.
Description	The Text Y-gap command sets the pixel gap between characters (y-axis), where the gap is in pixel units.	
Example	Byte Stream: cmd(MSB), cmd(LSB), pixelcount(MSB), pixelcount(LSB)	
	0xFF, 0x79, 0x00, 0x05 This will set the text Y-Gap to be 5 pixels, where 5 pixels is 0x00, 0x05 The Response will be 0x06 if the command is successfully executed.	
Library Function	txt_Ygap	

5.1.13 Text Bold

Serial Command	cmd (word), mode (word)	
	cmd	0xFF76
	mode	1 for ON. 0 for OFF.
Response	acknowledge (byte)	
	acknowledge	0x06: ACK byte if successful Anything else implies mismatch between command and response.
Description	The Text Bold command sets the Bold attribute for the text.	
	The ‘Text Bold’ attribute is cleared internally once the text (character or string) is displayed.	
Example	Byte Stream: cmd(MSB), cmd(LSB), mode(MSB), mode(LSB)	
	0xFF, 0x76, 0x00, 0x01	
	This will set the text to be bold, Bold = ON	
	The Response will be 0x06 if the command is successfully executed.	
Library Function	txt_Bold	

5.1.14 Text Inverse

Serial Command	cmd (word), mode (word)	
	cmd	0xFF74
	mode	1 for ON. 0 for OFF.
Response	acknowledge (byte)	
	acknowledge	0x06: ACK byte if successful Anything else implies mismatch between command and response.
Description	<p>The Text Inverse command inverts the text Foreground and Background colour.</p> <p>The ‘Text Inverse’ attribute is cleared internally once the text (character or string) is displayed.</p>	
Example	Byte Stream: cmd(MSB), cmd(LSB), mode(MSB), mode(LSB)	
	0xFF, 0x74, 0x00, 0x01 This will set the text Background and foreground colour to be inverse, where inverse = ON = 0x00, 0x01 The Response will be 0x06 if the command is successfully executed.	
Library Function	txt Inverse	

5.1.15 Text Italic

Serial Command	cmd (word), mode (word)	
	cmd	0xFF75
	mode	1 for ON. 0 for OFF.
Response	acknowledge (byte)	
	acknowledge	0x06: ACK byte if successful Anything else implies mismatch between command and response.
Description	<p>The Text Italic command sets the text to italic.</p> <p>The 'Text Italic' attribute is cleared internally once the text (character or string) is displayed.</p>	
Example	<p>Byte Stream: cmd(MSB), cmd(LSB), mode(MSB), mode(LSB)</p> <p>0xFF, 0x75, 0x00, 0x01</p> <p>This will set the text to be italic, where italic = ON = 0x00, 0x01</p> <p>The Response will be 0x06 if the command is successfully executed.</p>	
Library Function	txt_Italic	

5.1.16 Text Opacity

Serial Command	cmd (word), mode (word)	
	cmd	0xFF77
	mode	1 for ON. (Opaque) 0 for OFF. (Transparent)
Response	acknowledge (byte)	
	acknowledge	0x06: ACK byte if successful Anything else implies mismatch between command and response.
Description	The Text Opacity command selects whether or not the 'background' pixels are drawn. (Default mode is OPAQUE with BLACK background.)	
Example	Byte Stream: cmd(MSB), cmd(LSB), mode(MSB), mode(LSB) 0xFF, 0x77, 0x00, 0x00 This will set the text to be transparent, where Opacity = OFF = 0x00, 0x00 The Response will be 0x06 if the command is successfully executed.	
Library Function	txt_Opacity	

5.1.17 Text Underline

Serial Command	cmd (word), mode (word)	
	cmd	0xFF73
	mode	1 for ON. 0 for OFF.
Response	acknowledge (byte), value (word)	
	acknowledge	0x06: ACK byte if successful Anything else implies mismatch between command and response.
	value	Previous Text Underline status.
Description	The Text Underline command sets the text to underlined.	
	The ' Text Underline ' attribute is cleared internally once the text (character or string) is displayed.	
Example	Byte Stream: cmd(MSB), cmd(LSB), mode(MSB), mode(LSB)	
	0xFF, 0x73, 0x00, 0x01	
	This will set the text to be underlined, where Underline = ON = 0x00, 0x01	
	The Response will be 0x06 if the command is successfully executed.	
Library Function	txt_Underline	

5.1.18 Text Attributes

Serial Command	cmd (word), value (word)	
	cmd	0xFF72
	value	(bit 5 or) DEC 16 for BOLD (bit 6 or) DEC 32 for ITALIC (bit 7 or) DEC 64 for INVERSE (bit 8 or) DEC 128 for UNDERLINED Set or Clear the relevant bits to set the attributes for the text to be written. (bits can be combined by using logical 'OR' of bits) NOTE: bits 0-3 and 8-15 are reserved
Response	acknowledge (byte)	
	acknowledge	0x06: ACK byte if successful Anything else implies mismatch between command and response.
Description	The Text Attributes command controls the following functions grouped, Text Bold Text Italic Text Inverse Text Underlined The Attributes are set to normal internally once the text (character or string) is displayed.	
Example	Byte Stream: cmd(MSB), cmd(LSB), value(MSB), value(LSB) 0xFF, 0x72, 0x00, 0x90 This will set the Text Attributes to be Bold and Underlined. Where Bold has the value 16 and Underlined has the value 128, so 16+128=144 which is 0x90 in Hex. The Response will be 0x06 if the command is successfully executed.	
Library Function	txt Attributes	

5.1.19 Set Text Parameters

Serial Command	cmd (word), function (word), value (word)	
	cmd	0xFFE3
	function	See the list below
	value	See the list below
function		value
Function = 7 Text Print Delay		0 or 255 msec
Sets the Delay between the characters being printed through Put Character or Put String functions.		Default is 0 msec
Response	acknowledge (byte)	
	acknowledge	0x06: ACK byte if successful Anything else implies mismatch between command and response.
Description	Sets various parameters for the Text commands.	
Example	Byte Stream: cmd(MSB), cmd(LSB), function(MSB), function(LSB), value(MSB), value(LSB) 0xFF, 0xE3, 0x00, 0x07, 0x00, 0x96 This will set the Text Print Delay to be 150 (0x00, 0x96) The response will be 0x06 if successful	
Library Function	txt_Set	

5.2. Graphics Commands

The following is a summary of the commands available to be used for Graphics:

- Clear Screen
- Change Colour
- Draw Circle
- Draw Filled Circle
- Draw Line
- Draw Rectangle
- Draw Filled Rectangle
- Draw Polyline
- Draw Polygon
- Draw Triangle
- Calculate Orbit
- Put Pixel
- Read Pixel
- Move Origin
- Draw Line and Move Origin
- Clipping
- Set Clip Window
- Extend Clip Region
- Background Colour
- Outline Colour
- Contrast
- Frame Delay
- Line Pattern
- Screen Mode
- Transparency
- Transparent Colour
- Set Graphics Parameters

5.2.1 Clear Screen

Serial Command	cmd (word)	
	cmd	0xFFD7
Response	acknowledge (byte)	
	acknowledge	0x06: ACK byte if successful Anything else implies mismatch between command and response.
Description	<p>The Clear Screen command clears the screen using the current background colour. This command brings some of the settings back to default; such as,</p> <p>Outline colour set to BLACK Pen set to OUTLINE Text magnifications set to 1 All origins set to 0:0</p> <p>The alternative to maintain settings and clear screen is to draw a filled rectangle with the required background colour.</p>	
Example	<p>Byte Stream: cmd(MSB), cmd(LSB)</p> <p>0xFF, 0xD7</p> <p>The following will clear the display and restore the settings back to their defaults.</p> <p>The response will be 0x06 if the command is successful</p>	
Library Function	gfx_Cls	

5.2.2 Change Colour

Serial Command	cmd (word), oldColour (word), newColour (word)	
	cmd	0xFFBE
	oldColour	Specifies the sample colour to be changed within the clipping window.
	newColour	Specifies the new colour to change all occurrences of old colour within the clipping window.
Response	acknowledge (byte)	
	acknowledge	0x06: ACK byte if successful Anything else implies mismatch between command and response.
Description	The Change Colour command changes all oldColour pixels to newColour within the clipping window area.	
Example	Byte Stream: cmd(MSB), cmd(LSB), oldColour(MSB), oldColour (LSB), newColour(MSB), newColour (LSB)	
	0xFF, 0xBE, 0x00, 0x00, 0x00, 0x1F This will change all pixels coloured Black (0x00, 0x00) to be coloured Blue (0x00, 0x1F) within the clipping area. (Refer to the Clip Window command for more information on this.) The Response will be 0x06 if the command is successful	
Library Function	gfx_ChangeColour	

5.2.3 Draw Circle

Serial Command	cmd (word), x (word), y (word), rad (word), colour (word)	
	cmd	0xFFCD
	x, y	Specifies the centre of the circle.
	rad	Specifies the radius of the circle.
	colour	Specifies the colour of the circle.
Response	acknowledge (byte)	
	acknowledge	0x06: ACK byte if successful Anything else implies mismatch between command and response.
Description	The Draw Circle command draws a circle with centre point x, y with radius r using the specified colour.	
Example	Byte Stream: cmd(MSB), cmd(LSB), x(MSB), x(LSB), y(MSB), y(LSB), rad(MSB), rad(LSB), colour(MSB), colour(LSB)	
	0xFF, 0xCD, 0x00, 0x1E, 0x00, 0x1E, 0x00, 0x14, 0x80, 0x10	
	This will draw a Circle at X=30 (Hex 0x00, 0x64), Y=30 (Hex 0x00, 0x1E), of Radius=20 (0x00, 0x14), and of Colour=Purple (0x80, 0x10).	
	The response will be 0x06 if the command is successful	
Library Function	gfx Circle	

5.2.4 Draw Filled Circle

Serial Command	cmd (word), x (word), y (word), rad (word), colour (word)	
	cmd	0xFFCC
	x, y	Specifies the centre of the circle.
	rad	Specifies the radius of the circle.
	colour	Specifies the colour of the circle.
Response	acknowledge (byte)	
	acknowledge	0x06: ACK byte if successful Anything else implies mismatch between command and response.
Description	The Draw Circle command draws a solid circle with centre point x1, y1 with radius using the specified colour. The outline colour can be specified with the “ Outline Colour ” command. If “ Outline Colour ” is set to 0, no outline is drawn.	
Example	Byte Stream: cmd(MSB), cmd(LSB), x(MSB), x(LSB), y(MSB), y(LSB), rad(MSB), rad(LSB), colour(MSB), colour(LSB) 0xFF, 0xCC, 0x00, 0x2D, 0x00, 0x28, 0x00, 0x23, 0x84, 0x10 This will draw a Solid Filled Circle at X=45 (Hex 0x00, 0x2D), Y=40 (Hex 0x00, 0x28), of Radius=35 (0x00, 0x23), and of Colour=Grey (0x84, 0x10). The response will be 0x06 if the command is successful	
Library Function	gfx CircleFilled	

5.2.5 Draw Line

Serial Command	cmd (word), x1 (word), y1 (word), x2 (word), y2 (word), colour (word)	
	cmd	0xFFD2
	x1, y1	Specifies the starting coordinates of the line.
	x2, y2	Specifies the ending coordinates of the line.
	colour	Specifies the colour of the line.
Response	acknowledge (byte)	
	acknowledge	0x06: ACK byte if successful Anything else implies mismatch between command and response.
Description	The Draw Line command draws a line from x1,y1 to x2,y2 using the specified colour. The line is drawn using the current object colour. The current origin is not altered. The line may be tessellated with the “ Line Pattern ” command.	
Example	Byte Stream: cmd(MSB), cmd(LSB), x1(MSB), x1(LSB), y1(MSB), y1(LSB), x2(MSB), x2(LSB), y2(MSB), y2(LSB), colour(MSB), colour(LSB)	
	0xFF, 0xD2, 0x00, 0x0A, 0x00, 0x0F, 0x00, 0x28, 0x00, 0x3C, 0x04, 0x10 This will Line from X1=10 (Hex 0x00, 0x0A), Y1=15 (Hex 0x00, 0x0F), to X2=40 (0x00, 0x28), Y2=60 (0x00, 0x3C) of Colour=Teal (0x04, 0x10). The response will be 0x06 if the command is successful	
Library Function	gfx_Line	

5.2.6 Draw Rectangle

Serial Command	cmd (word), x1 (word), y1 (word), x2 (word), y2 (word), colour (word)	
	cmd	0xFFCF
	x1, y1	Specifies the top left corner of the rectangle.
	x2, y2	Specifies the bottom right corner of the rectangle.
	colour	Specifies the colour of the rectangle.
Response	acknowledge (byte)	
	acknowledge	0x06: ACK byte if successful Anything else implies mismatch between command and response.
Description	The Draw Rectangle command draws a rectangle from x1, y1 to x2, y2 using the specified colour. The line may be tessellated with the “ Line Pattern ” command.	
Example	Byte Stream: cmd(MSB), cmd(LSB), x1(MSB), x1(LSB), y1(MSB), y1(LSB), x2(MSB), x2(LSB), y2(MSB), y2(LSB), colour(MSB), colour(LSB) 0xFF, 0xCF, 0x00, 0x0A, 0x00, 0x14, 0x00, 0x5A, 0x00, 0x3C, 0xF8, 0x00 The will draw a Rectangle from X1=10 (0x00, 0x0A), Y1=20 (0x00, 0x14), to X2=90 (0x00, 0x5A), Y2=60 (0x00, 0x3C), of colour=Red (0xF8, 0x00). The response will be 0x06 if the command is successful	
Library Function	gfx_Rectangle	

5.2.7 Draw Filled Rectangle

Serial Command	cmd (word), x1 (word), y1 (word), x2 (word), y2 (word), colour (word)	
	cmd	0xFFCE
	x1, y1	Specifies the top left corner of the rectangle.
	x2, y2	Specifies the bottom right corner of the rectangle.
	colour	Specifies the colour of the rectangle.
Response	acknowledge (byte)	
	acknowledge	0x06: ACK byte if successful Anything else implies mismatch between command and response.
Description	The Draw Filled Rectangle command draws a solid rectangle from x1, y1 to x2, y2 using the specified colour. The line may be tessellated with the “ Line Pattern ” command. The outline colour can be specified with the “ Outline Colour ” command. If “ Outline Colour ” is set to 0, no outline is drawn.	
Example	Byte Stream: cmd(MSB), cmd(LSB), x1(MSB), x1(LSB), y1(MSB), y1(LSB), x2(MSB), x2(LSB), y2(MSB), y2(LSB), colour(MSB), colour(LSB) 0xFF, 0xCE, 0x00, 0x0A, 0x00, 0x14, 0x00, 0x5A, 0x00, 0x3C, 0x07, 0xE0 The will draw a Solid Filled Rectangle from X1=10 (0x00, 0x0A), Y1=20 (0x00, 0x14), to X2=90 (0x00, 0x5A), Y2=60 (0x00, 0x3C), of colour=Lime (0x07, 0xE0). The response will be 0x06 if the command is successful	
Library Function	gfx_RectangleFilled	

5.2.8 Draw Polyline

Serial Command	cmd (word), n (word), vx1 (word)... vxN (word), vy1 (word)... vyN (word), colour (word)	
	cmd	0x0005
	n	Specifies the number of elements in the x and y arrays specifying the vertices for the polyline.
	vx, vy	Specifies the array of elements for the x/y coordinates of the vertices. Vx1, vx2, ..., vxN, vy1, vy2, ..., vyN
	colour	Specifies the colour of the polyline.
Response	acknowledge (byte)	
	acknowledge	0x06: ACK byte if successful Anything else implies mismatch between command and response.
Description	The Draw Polyline command plots lines between points specified by a pair of arrays using the specified colour. The lines may be tessellated with the “ Line Pattern ” command. The “ Draw Polyline ” command can be used to create complex raster graphics by loading the arrays from serial input or from MEDIA with very little code requirement.	
Example	Byte Stream: cmd(MSB), cmd(LSB), n(MSB), n(LSB), vx1(MSB), vx1(LSB), vx2(MSB), vx2(LSB), vx3(MSB), vx3(LSB), vy1(MSB), vy1(LSB), vy2(MSB), vy2(LSB), vy3(MSB), vy3(LSB), colour(MSB), colour(LSB)	
	0x00, 0x05, 0x00, 0x03, 0x00, 0x0A, 0x00, 0x3C, 0x00, 0x78, 0x00, 0x05, 0x00, 0x50, 0x00, 0x5A, 0x80, 0x00 The following will draw a 3 point Polyline from X1=10 (0x00, 0x0A), Y1=5 (0x00, 0x05), to X2=60 (0x00, 0x3C), Y2=80 (0x00, 0x50), and finally to X3=120 (0x00, 0x78), Y3=90 (0x00, 0x5A) of Colour=Maroon (0x80, 0x00) The response will be 0x06 if the command is successful	
Library Function	gfx_Polyline	

5.2.9 Draw Polygon

Serial Command	cmd (word), n (word), vx1 (word)...vxN (word), vy1 (word)...vyN (word), colour (word)	
	cmd	0x0004
	n	Specifies the number of elements in the x and y arrays specifying the vertices for the polygon.
	vx, vy	Specifies the array of elements for the x/y coordinates of the vertices. Vx1, vx2, ..., vxN, vy1, vy2, ..., vyN
	colour	Specifies the colour of the polygon.
Response	acknowledge (byte)	
	acknowledge	0x06: ACK byte if successful Anything else implies mismatch between command and response.
Description	The Draw Polygon command plots lines between points specified by a pair of arrays using the specified colour. The last point is drawn back to the first point, completing the polygon. The lines may be tessellated with “ Line Pattern ” command. The Draw Polygon command can be used to create complex raster graphics by loading the arrays from serial input or from MEDIA with very little code requirement.	
Example	Byte Stream: cmd(MSB), cmd(LSB), n(MSB), n(LSB), vx1(MSB), vx1(LSB), vx2(MSB), vx2(LSB), vx3(MSB), vx3(LSB), vy1(MSB), vy1(LSB), vy2(MSB), vy2(LSB), vy3(MSB), vy3(LSB), vy4(MSB), colour(MSB), colour(LSB) 0x00, 0x04, 0x00, 0x03, 0x00, 0x0A, 0x00, 0x3C, 0x00, 0x78, 0x00, 0x05, 0x00, 0x50, 0x00, 0x5A, 0xFF, 0xE0 The following will draw a 3 point Polygon from X1=10 (0x00, 0x0A), Y1=5 (0x00, 0x05), to X2=60 (0x00, 0x3C), Y2=80 (0x00, 0x50), and finally to X3=120 (0x00, 0x78), Y3=90 (0x00, 0x5A) of Colour=Yellow (0xFF, 0xE0) The response will be 0x06 if the command is successful	
Library Function	gfx_Polygon	

5.2.10 Draw Triangle

Serial Command	cmd (word), x1 (word), y1 (word), x2 (word), y2 (word), x3 (word), y3 (word), colour (word)	
	cmd	0xFFC9
	x1, y1	Specifies the first vertice of the triangle.
	x2, y2	Specifies the second vertice of the triangle.
	x3, y3	Specifies the third vertice of the triangle.
	colour	Specifies the colour of the triangle.
Response	acknowledge (byte)	
	acknowledge	0x06: ACK byte if successful Anything else implies mismatch between command and response.
Description	The Draw Triangle command draws a triangle outline between vertices x1,y1 , x2,y2 and x3,y3 using the specified colour. The line may be tessellated with the “ Line Pattern ” command.	
Example	Byte Stream: cmd(MSB), cmd(LSB), x1(MSB), x1(LSB), y1(MSB), y1(LSB), x2(MSB), x2(LSB), y2(MSB), y2(LSB), x3(MSB), x3(LSB), y3(MSB), y3(LSB), colour(MSB), colour(LSB)	
	0xFF, 0xC9, 0x00, 0x00, 0x00, 0x00, 0x00, 0x00, 0x28, 0x00, 0x28, 0x00, 0x00, 0x28, 0x07, 0xFF This will draw a Triangle from X1=00 (0x00, 0x00), Y1=00 (0x00, 0x00), to X2=40 (0x00, 0x28), Y2=40 (0x00, 0x28), to X3=00 (0x00, 0x00), Y3=40 (0x00, 0x28) of colour=Aqua (0x07, 0xFF) The response will be 0x06 if the command is successful	
Library Function	gfx_Triangle	

5.2.11 Calculate Orbit

Serial Command	cmd (word), angle (word), distance (word)	
	cmd	0x0003
	angle	Specifies the angle from the origin to the remote point. The angle is specified in degrees.
	distance	Specifies the distance from the origin to the remote point in pixel units.
Response	acknowledge (byte), Xdist (word), Ydist (word)	
	acknowledge	0x06: ACK byte if successful Anything else implies mismatch between command and response.
	Xdist	X coordinate from the current origin.
	Ydist	Y coordinate from the current origin.
Description	The Calculate Orbit command calculates the x, y coordinates of a distant point relative to the current origin, where the only known parameters are the angle and the distance from the current origin.	
Example	Byte Stream: cmd(MSB), cmd(LSB), angle(MSB), angle(LSB), distance(MSB), distance(LSB) 0x00, 0x03, 0x00, 0x2D, 0x00, 0x3C This will calculate the x and y coordinates based on the Angle=45 degrees (0x00, 0x2D) and the Distance=60 pixels (0x00, 0x3C) from the current origin. The response will be 0x06, 0x00, 0x29, 0x00, 0x29 assuming the origin is at X=0, Y=0. The coordinates are X=41 (0x00, 0x29) and Y=41 (0x00, 0x29)	
Library Function	gfx_Orbit	

5.2.12 Put pixel

Serial Command	cmd (word), x (word), y (word), colour (word)	
	cmd	0xFFCB
	x, y	Specifies the pixel x, y coordinates.
	colour	Specifies the colour of the pixel.
Response	acknowledge (byte)	
	acknowledge	0x06: ACK byte if successful Anything else implies mismatch between command and response.
Description	The Put Pixel command draws a pixel at position x, y using the specified colour.	
Example	Byte Stream: cmd(MSB), cmd(LSB), x(MSB), x(LSB), y(MSB), y(LSB), colour(MSB), colour(LSB)	
	0xFF, 0xCB, 0x00, 0x28, 0x00, 0x32, 0xFF, 0xE0 This will put a pixel at X=40 (0x00, 0x28), Y=50 (0x00, 0x32), and colour the pixel Yellow (0xFF, 0xE0). The response will be 0x06 if the command is successful	
Library Function	gfx_PutPixel	

5.2.13 Read Pixel

Serial Command	cmd (word), x (word), y (word)	
	cmd	0xFFCA
	x, y	Specifies the pixel x, y coordinates.
Response	acknowledge (byte), colour (word)	
	acknowledge	0x06: ACK byte if successful Anything else implies mismatch between command and response.
	colour	16bit colour of the pixel
Description	The Read Pixel command reads the colour value of the pixel at position x,y.	
Example	<p>Byte Stream: cmd(MSB), cmd(LSB), x(MSB), x(LSB), y(MSB), y(LSB)</p> <p>0xFF, 0xCA, 0x00, 0x28, 0x00, 0x32</p> <p>This will read the colour of a pixel at X=40 (0x00, 0x28), Y=50 (0x00, 0x32)</p> <p>The response will be 0x06, 0xFF, 0xE0 if the command is successful, assuming the pixel being read is coloured Yellow (0xFF, 0xE0)</p>	
Library Function	gfx_GetPixel	

5.2.14 Move Origin

Serial Command	cmd (word), xpos (word), ypos (word)	
	cmd	0xFFD6
	xpos, ypos	Specifies the horizontal and vertical position of the new origin.
Response	acknowledge (byte)	
	acknowledge	0x06: ACK byte if successful Anything else implies mismatch between command and response.
Description	The Move Origin command moves the origin to a new position.	
Example	Byte Stream: cmd(MSB), cmd(LSB), xpos(MSB), xpos(LSB), ypos(MSB), ypos(LSB) 0xFF, 0xD6, 0x00, 0x32, 0x00, 0x5A This will move the Origin to be X=50 (0x00, 0x32), Y=90 (0x00, 0x5A) The response will be 0x06 if the command is successful	
Library Function	gfx MoveTo	

5.2.15 Draw Line & Move Origin

Serial Command	cmd (word), xpos (word), ypos (word)	
	cmd	0xFFD4
	xpos, ypos	Specifies the horizontal and vertical position of the line end as well as the new origin.
Response	acknowledge (byte)	
	acknowledge	0x06: ACK byte if successful Anything else implies mismatch between command and response.
Description	<p>The Draw Line & Move Origin command draws a line from the current origin to a new position. The Origin is then set to the new position. The line is drawn using the current object colour, using the “Set Graphics Parameters” – “Object Colour” command. The line may be tessellated with the “Line Pattern” command.</p> <p>Note: this command is mostly useful with the “Calculate Orbit” command, and usually the “Draw Line” command would be used</p>	
Example	<p>Byte Stream: cmd(MSB), cmd(LSB), xpos(MSB), xpos(LSB), ypos(MSB), ypos(LSB)</p> <p>0xFF, 0xD4, 0x00, 0x32, 0x00, 0x46</p> <p>This will draw a line from the current origin (assuming this is X=0, Y=0 for this example) to X=50 (0x00, 0x32), Y=70 (0x00, 0x46) and set the origin to be this point (X=50, Y=70).</p> <p>The response will be 0x06 if the command is successful</p>	
Library Function	gfx_LineTo	

5.2.16 Clipping

Serial Command	cmd (word), value (word)	
	cmd	0xFF6C
	value	0 = Clipping Disabled, 1 = Clipping Enabled
Response	acknowledge (byte)	
	acknowledge	0x06: ACK byte if successful Anything else implies mismatch between command and response.
Description	The Clipping command Enables or Disables the ability for Clipping to be used	
Example	<p>Byte Stream: cmd(MSB), cmd(LSB), value(MSB), value(LSB)</p> <p>0xFF, 0x6C, 0x00, 0x01</p> <p>This will Enable Clipping</p> <p>The response will be 0x06 if the command is successful</p>	
Library Function	gfx_Clipping	

5.2.17 Set Clip Window

Serial Command	cmd (word), x1 (word), y1 (word), x2 (word), y2 (word)	
	cmd	0xFFBF
	x1, y1	Specifies the horizontal and vertical position of the top left corner of the clipping window.
	x2, y2	Specifies the horizontal and vertical position of the bottom right corner of the clipping window.
Response	acknowledge (byte)	
	acknowledge	0x06: ACK byte if successful Anything else implies mismatch between command and response.
Description	The Set Clip Window command specifies a clipping window region on the screen such that any objects and text placed onto the screen will be clipped and displayed only within that region. For the clipping window to take effect, the clipping setting must be enabled separately using the “ Clipping ” command	
Example	Byte Stream: cmd(MSB), cmd(LSB), x1(MSB), x1(LSB), y1(MSB), y1(LSB), x2(MSB), x2(LSB), y2(MSB), y2(LSB) 0xFF, 0xBF, 0x00, 0x00, 0x00, 0x00, 0x00, 0x00, 0x28, 0x00, 0x28 This will set the top left of the Clipping Window Region to be X1=0 (0x00, 0x00), Y1=0 (0x00, 0x00), and bottom right to be X2=40 (0x00, 0x28), Y2=40 (0x00, 0x28) The response will be 0x06 if the command is successful	
Library Function	gfx ClipWindow	

5.2.18 Extend Clip Region

Serial Command	cmd (word)	
	cmd	0xFFBC
Response	acknowledge (byte)	
	acknowledge	0x06: ACK byte if successful Anything else implies mismatch between command and response.
Description	The Extend Clip Region command forces the clip region to the extent of the last text that was printed, or the last image that was shown.	
Example	<p>Byte Stream: cmd(MSB), cmd(LSB)</p> <p>0xFF, 0xBC</p> <p>This will extend the clip region to the extent of the last text or image that was shown.</p> <p>The response will be 0x06 if the command is successful.</p>	
Library Function	gfx_SetClipRegion	

5.2.19 Background Colour

Serial Command	cmd (word), colour (word)	
	cmd	0xFF6E
	colour	Specifies the colour to be set (0-65535 or HEX 0x0000-0xFFFF)
Response	acknowledge (byte)	
	acknowledge	0x06: ACK byte if successful Anything else implies mismatch between command and response.
Description	The Background Colour command sets the screen background colour	
Example	Byte Stream: cmd(MSB), cmd(LSB), colour(MSB), colour(LSB) 0xFF, 0x6E, 0x00, 0x10 This will set the Background Colour to be Navy (0x00, 0x10) The response will be 0x06 if the command is successful.	
Library Function	gfx_BGcolour	

5.2.20 Outline Colour

Serial Command	cmd (word), colour (word)	
	cmd	0xFF67
	colour	Specifies the colour to be set (0-65535 or HEX 0x0000-0xFFFF), set to 0 for no effect
Response	acknowledge (byte)	
	acknowledge	0x06: ACK byte if successful Anything else implies mismatch between command and response.
Description	The Outline Colour command sets the outline colour for rectangles and circles.	
Example	Byte Stream: cmd(MSB), cmd(LSB), colour(MSB), colour(LSB) 0xFF, 0x67, 0xF8, 0x1F This will set the Outline Colour to be Fuchsia (0xF8, 0x1F)	
Library Function	gfx_OutlineColour	

5.2.21 Contrast

Serial Command	cmd (word), contrast (word)	
	cmd	0xFF66
	contrast	Contrast 0 = Display OFF Contrast 1 - 15 = Contrast Level EXCEPTION: uLCD-144-G2 does not support Contrast 'levels', values from 1-15 could be set to turn the display 'On' and 0 to turn the Display 'Off'.
Response	acknowledge (byte)	
	acknowledge	0x06: ACK byte if successful Anything else implies mismatch between command and response.
Description	The Contrast Command sets the contrast of the display, or turns it On/Off depending on display model	
Example	Byte Stream: cmd(MSB), cmd(LSB), contrast(MSB), contrast(LSB) 0xFF, 0x66, 0x00, 0x09 This will set the Contrast of the display (example is a uOLED-128-G2) to be 9.	
Library Function	gfx_Contrast	

5.2.22 Frame Delay

Serial Command	cmd (word), Msec (word)	
	cmd	0xFF69
	Msec	0-255 milliseconds
Response	acknowledge (byte), value (word)	
	acknowledge	0x06: ACK byte if successful Anything else implies mismatch between command and response.
	value	Previous Frame Delay value.
Description	The Frame Delay command sets the inter frame delay for the “ Media Video ” command	
Example	<p>Byte Stream: cmd(MSB), cmd(LSB), Msec(MSB), Msec(LSB)</p> <p>0xFF, 0x69, 0x00, 0x05</p> <p>This will set the frame delay to 5 milliseconds</p> <p>The response will be 0x06 if the command is successful.</p>	
Library Function	gfx_FrameDelay	

5.2.23 Line Pattern

Serial Command	cmd (word), pattern (word)	
	cmd	0xFF65
	pattern	0 = all line pixels are on (Default) 0-65535 (or HEX 0x0000-0xFFFF) = number of bits in the line are turned off to form a pattern
Response	acknowledge (byte)	
	acknowledge	0x06: ACK byte if successful Anything else implies mismatch between command and response.
Description	The Line Pattern command sets the line draw pattern for line drawing. If set to zero, lines are solid, else each '1' bit represents a pixel that is turned off.	
Example	Byte Stream: cmd(MSB), cmd(LSB), pattern(MSB), pattern(LSB)	
	0xFF, 0x65, 0x00, 0x08 This will set the Line Pattern of the line to be drawn to have 8 bits out of the 65535 turned off.	
Library Function	gfx_LinePattern	

5.2.24 Screen Mode

Serial Command	cmd (word), mode (word)	
	cmd	0xFF68
	mode	0 = LANDSCAPE 1 = LANDSCAPE REVERSE 2 = PORTRAIT 3 = PORTRAIT REVERSE
Response	acknowledge (byte)	
	acknowledge	0x06: ACK byte if successful Anything else implies mismatch between command and response.
Description	The Screen Mode command alters the graphics orientation LANDSCAPE, LANDSCAPE_R, PORTRAIT, PORTRAIT_R	
Example	Byte Stream: cmd(MSB), cmd(LSB), mode(MSB), mode(LSB)	
	0xFF, 0x68, 0x00, 0x01 This will set the Screen Mode of the display to be Landscape Reverse.	
Library Function	gfx_ScreenMode	

5.2.25 Set Graphics Parameters

Serial Command	cmd (word), function (word), value (word)	
	cmd	0xFFD8
	function	See the list below
	value	See the list below
function		value
Function = 0 Pen Size		0 or SOLID 1 or OUTLINE
Sets the Draw mode to Outline or Solid.		
Function = 2 Object Colour		0 – 65535 or 0 - 0xFFFF
Generic colour for gfx_LineTo(...)		
Function = 4 Transparent Colour		n/a
Not Implemented on Goldelox.		
Function = 5 Transparency		n/a
Not Implemented on Goldelox.		
Response	acknowledge (byte)	
	acknowledge	0x06: ACK byte if successful Anything else implies mismatch between command and response.
Description	Sets various parameters for the Graphics Commands.	
Example	Byte Stream: cmd(MSB), cmd(LSB), function(MSB), function(LSB), value(MSB), value(LSB)	
	0xFF, 0xD8, 0x00, 0x12, 0x04, 0x00	
	This will call the Object Colour command and set the object colour to be Green (0x04, 0x00)	
	The response will be 0x06 if successful	
Library Function	gfx_Set	

5.3. Media Commands (SD/SDHC Memory Cards)

The following is a summary of the commands available to be used for Media:

- Media Init
- Set Byte Address
- Set Sector Address
- Read Byte
- Read Word
- Write Byte
- Write Word
- Flush Media
- Display Image (RAW)
- Display Video (RAW)
- Display Video Frame (RAW)

5.3.1 Media Init

Serial Command	cmd (word)	
	cmd	0xFFB1
Response	acknowledge (byte), value(word)	
	acknowledge	0x06: ACK byte if successful Anything else implies mismatch between command and response.
	value	Non-Zero if the card is present and successfully initialised. 0 if no card is present or not able to initialise.
Description	The Media Init command initialises a uSD/SD/SDHC memory card for further operations. The SD card is connected to the SPI (serial peripheral interface) of the Goldelox chip.	
Example	<p>Byte Stream: cmd(MSB), cmd(LSB)</p> <p>0xFF, 0xB1</p> <p>This command will initialize a uSD/SD/SDHC memory card so it can be used for further operations.</p> <p>The response could be 0x06 0x00 0x04 if the memory card is successfully initialized (assuming a 2gb uSD card).</p>	
Library Function	media_Init	

5.3.2 Set Byte Address

Serial Command	cmd (word), HIword (word), LOword (word)	
	cmd	0xFFB9
	HIword	Specifies the high word (upper 2 bytes) of a 4 byte media memory byte address location.
	LOword	Specifies the low word (lower 2 bytes) of a 4 byte media memory byte address location.
Response	acknowledge (byte)	
	acknowledge	0x06: ACK byte if successful Anything else implies mismatch between command and response.
Description	The Set Byte Address command sets the media memory internal Address pointer for access at a non-sector aligned byte address.	
Example	Byte Stream: cmd(MSB), cmd(LSB), HIword(MSB), HIword(LSB), LOword(MSB), LOword(LSB)	
	0xFF, 0xB9, 0x00, 0x00, 0x02, 0x01	
	This will set the media address to byte 513 (0x00, 0x00, 0x02, 0x01) (which is sector #1, 2nd byte in sector) for subsequent operations. The response will be 0x06 if the command is successful	
Library Function	media_SetAdd	

5.3.3 Set Sector Address

Serial Command	cmd (word), HIword (word), LOword (word)	
	cmd	0xFFB8
	HIword	Specifies the high word (upper 2 bytes) of a 4 byte media memory sector address location.
	LOword	Specifies the low word (lower 2 bytes) of a 4 byte media memory sector address location.
Response	acknowledge (byte)	
	acknowledge	0x06: ACK byte if successful Anything else implies mismatch between command and response.
Description	The Set Sector Address command sets the media memory internal Address pointer for sector access.	
Example	Byte Stream: cmd(MSB), cmd(LSB), HIword(MSB), HIword(LSB), LOword(MSB), LOword(LSB)	
	0xFF, 0xB8, 0x00, 0x00, 0x00, 0x0A	
	This will set the media address to the 11th (0x00, 0x00, 0x00, 0x0A) sector (which is also byte address 5120) for subsequent operations The response will be 0x06 if the command is successful	
Library Function	media_SetSector	

5.3.4 Read Byte

Serial Command	cmd (word)	
	cmd	0xFFB7
Response	acknowledge (byte) , value (word)	
	acknowledge	0x06: ACK byte if successful Anything else implies mismatch between command and response.
	value	Byte value in the LSB.
Description	The Read Byte command returns the byte value from the current media address, set by the “ Set Byte Address ” command. The internal byte address will then be internally incremented by one.	
Example	<p>Byte Stream: cmd(MSB), cmd(LSB)</p> <p>0xFF, 0xB7</p> <p>This will read and return the byte value from the media address set by the Set Byte Address command.</p> <p>The response will be 0x06, 0x00, 0xFF assuming the value being read was 255 (0x00, 0xFF).</p>	
Library Function	media_ReadByte	
See Also	See also the “ Media Init ” command to enable the media to be ready for access, and “ Set Byte Address ” command to define where reading is to occur.	

5.3.5 Read Word

Serial Command	cmd (word)	
	cmd	0xFFB6
Response	acknowledge (byte) , value (word)	
	acknowledge	0x06: ACK byte if successful Anything else implies mismatch between command and response.
	value	Word value.
Description	The Read Word command returns the word value (2 bytes) from the current media address, set by the “ Set Byte Address ” command. The internal byte address will then be internally incremented by two. If the address is not aligned, the word will still be read correctly.	
Example	<p>Byte Stream: cmd(MSB), cmd(LSB)</p> <p>0xFF, 0xB6</p> <p>This will read and return the word value from the media address set by the Set Byte Address command.</p> <p>The response will be 0x06, 0x3B, 0xAF assuming the value being read was 15279 (0x3B, 0xAF).</p>	
Library Function	media_ReadWord	
See Also	See also the “ Media Init ” command to enable the media to be ready for access, and “ Set Byte Address ” command to define where reading is to occur.	

5.3.6 Write Byte

Serial Command	cmd (word), value (word)	
	cmd	0xFFB5
	value	Byte value, in the LSB, to be written at the current byte address location.
Response	acknowledge (byte) , status (word)	
	acknowledge	0x06: ACK byte if successful Anything else implies mismatch between command and response.
	status	Non Zero for successful media response. 0 for attempt failed.
Description	<p>Writes a byte to the current media address that was initially set with the “Set Sector Address” command.</p> <p>Note: Writing bytes or words to a media sector must start from the beginning of the sector. All writes will be incremental until the “Flush Media” command is executed, or the sector address rolls over to the next sector. When the “Flush Media” command is called, any remaining bytes in the sector will be padded with 0xFF, destroying the previous contents. An attempt to use the “Set Byte Address” command will result in the lower 9 bits being interpreted as zero. If the writing rolls over to the next sector, the “Flush Media” command is issued automatically internally.</p>	
Example	<p>Byte Stream: cmd(MSB), cmd(LSB), value(MSB), value(LSB)</p> <p>0xFF, 0xB5, 0x00, 0x61</p> <p>This will write the ASCII character ‘a’ (0x00, 0x61) as a byte to the media address set by Set Sector Address.</p> <p>The response will be 0x06, 0x00, 0x01 assuming the value being written was successful.</p>	
Library Function	media_WriteByte	
See Also	See also the “Media Init” command to enable the media to be ready for access, and “Set Sector Address” command to define where writing is to occur.	

5.3.7 Write Word

Serial Command	cmd (word), value (word)	
	cmd	0xFFB4
	value	The 16 bit word to be written at the current media address location.
Response	acknowledge (byte) , status (word)	
	acknowledge	0x06: ACK byte if successful Anything else implies mismatch between command and response.
	status	Non Zero for successful media response. 0 for attempt failed.
Description	<p>Writes a word to the current media address that was initially set with the “Set Sector Address” command.</p> <p>Note: Writing bytes or words to a media sector must start from the beginning of the sector. All writes will be incremental until the “Flush Media” command is executed, or the sector address rolls over to the next sector. When “Flush Media” command is called, any remaining bytes in the sector will be padded with 0xFF, destroying the previous contents. An attempt to use the “Set Byte Address” command will result in the lower 9 bits being interpreted as zero. If the writing rolls over to the next sector, the “Flush Media” command is issued automatically internally.</p>	
Example	<p>Byte Stream: cmd(MSB), cmd(LSB), value(MSB), value(LSB)</p> <p>0xFF, 0xB4, 0x00, 0x41</p> <p>This will write the ASCII character ‘A’ (0x00, 0x41) as a word to the media address set by Set Sector Address.</p> <p>The response will be 0x06, 0x00, 0x01 assuming the value being written was successful.</p>	
Library Function	media_WriteWord	
See Also	See also the “ Media Init ” command to enable the media to be ready for access, and “ Set Sector Address ” command to define where writing is to occur.	

5.3.8 Flush Media

Serial Command	cmd (word)	
	cmd	0xFFB2
Response	acknowledge (byte) , status (word)	
	acknowledge	0x06: ACK byte if successful Anything else implies mismatch between command and response.
	status	Non Zero for successful media response. 0 for attempt failed.
Description	After writing any data to a sector, the Flush Media command should be called to ensure that the current sector that is being written is correctly stored back to the media else write operations may be unpredictable.	
Example	Byte Stream: cmd(MSB), cmd(LSB) 0xFF, 0xB2 This command will ensure data written to the current sector is correctly stored to the media. The response will be 0x06, 0xFF, 0xFF if the command is successful (see Status above)	
Library Function	media_Flush	

5.3.9 Display Image (RAW)

Serial Command	cmd (word), x (word), y (word)	
	cmd	0xFFB3
	x, y	Specifies the top left position where the image will be displayed.
Response	acknowledge (byte)	
	acknowledge	0x06: ACK byte if successful Anything else implies mismatch between command and response.
Description	Displays an image from the media storage at the specified co-ordinates. The image address is previously specified with the “ Set Byte Address ” command or “ Set Sector Address ” command. If the image is shown partially off screen, it may not be displayed correctly.	
Example	Byte Stream: cmd(MSB), cmd(LSB), x(MSB), x(LSB), y(MSB), y(LSB)	
	0xFF, 0xB3, 0x00, 0x0A, 0x00, 0x14 This will display an image at X=10 (0x00, 0x0A), Y=20 (0x00, 0x14) from the media storage location specified. The response will be 0x06 if the command is successful	
Library Function	media_Image	
See Also	See also the “ Media Init ” command to enable the media to be ready for access, and “ Set Byte Address ” or “ Set Sector Address ” commands to define where reading is to occur.	

5.3.10 Display Video (RAW)

Serial Command	cmd (word), x (word), y (word)	
	cmd	0xFFBB
	x, y	Specifies the top left position where the video clip will be displayed.
Response	acknowledge (byte)	
	acknowledge	0x06: ACK byte if successful Anything else implies mismatch between command and response.
Description	Displays a <i>video</i> clip from the media storage device at the specified co-ordinates. The <i>video</i> address location in the media is previously specified with the “ Set Byte Address ” or “ Set Sector Address ” commands. If the <i>video</i> is shown partially off screen, it may not be displayed correctly. Note that showing a <i>video</i> blocks all other processes until the video has finished showing. See the “ Display Video Frame ” command for alternatives.	
Example	Byte Stream: cmd(MSB), cmd(LSB), x(MSB), x(LSB), y(MSB), y(LSB)	
	0xFF, 0xBB, 0x00, 0x0A, 0x00, 0x0A This will display a video clip at X=10 (0x00, 0x0A), Y=10 (0x00, 0x0A) from the media storage device location specified. The response will be 0x06 if the command is successful	
Library Function	media_Video	
See Also	See also the “ Media Init ” command to enable the media to be ready for access, and “ Set Byte Address ” or “ Set Sector Address ” commands to define where reading is to occur. See the “ Display Video Frames ” command for an alternative.	

5.3.11 Display Video Frame (RAW)

Serial Command	cmd (word), x (word), y (word), frameNumber (word)	
	cmd	0xFFBA
	x, y	Specifies the top left position of the video frame to be displayed.
	frameNumber	Specifies the required frame number to be displayed.
Response	acknowledge (byte)	
	acknowledge	0x06: ACK byte if successful Anything else implies mismatch between command and response.
Description	Displays a <i>video</i> from the media storage device at the specified co-ordinates. The <i>video</i> address is previously specified with the “ Set Byte Address ” command or “ Set Sector Address ” command. If the <i>video</i> is shown partially off it may not be displayed correctly. The frames can be shown in any order. This function gives you great flexibility for showing various icons from an image strip, as well as showing videos while doing other tasks	
Example	Byte Stream: cmd(MSB), cmd(LSB), x(MSB), x(LSB), y(MSB), y(LSB), frameNumber(MSB), frameNumber(LSB) 0xFF, 0xBA, 0x00, 0x23, 0x00, 0x05, 0x00, 0x2D This will display frame number 45 (0x00, 0x2D) of the video clip stored at the address specified, and display it at location X=35 (0x00, 0x23), Y=5 (0x00, 0x05). The response will be 0x06 if the command is successful	
Library Function	media_VideoFrame	
See Also	See also the “ Media Init ” command to enable the media to be ready for access, and “ Set Byte Address ” or “ Set Sector Address ” commands to define where reading is to occur.	

5.4. Memory Access Commands

The following is a summary of the commands available to be used for Memory Access:

- Byte Peek
- Byte Poke
- Word Peek
- Word Poke

5.4.1 Byte Peek

Serial Command	cmd (word), byteRegister (word)	
	cmd	0xFFFF6
	byteRegister	Byte register address. EVE System Registers Memory Map for Byte registers is listed at the end of this document.
Response	acknowledge (byte), value (word)	
	acknowledge	0x06: ACK byte if successful Anything else implies mismatch between command and response.
	value	Register value in the LSB.
Description	This command returns the EVE System Byte Register value in the lower byte.	
Example	<p>Byte Stream: cmd(MSB), cmd(LSB), byteRegister(MSB), byteRegister(LSB)</p> <p>0xFF, 0xF6, 0x00, 0xA1</p> <p>This will read and return the byte value from the Byte register address 161 (0x00 0xA1) that represents Current Screen Mode.</p> <p>The response will be 0x06, 0x00, 0x01 assuming the Screen Mode being set to Landscape Reverse.</p>	
Library Function	peekB	

5.4.2 Byte Poke

Serial Command	cmd (word), byteRegister (word), value (word)	
	cmd	0xFFFF4
	byteRegister	Byte register address. EVE System Registers Memory Map for Byte registers is listed at the end of this document.
	value	Register value in the LSB.
Response	acknowledge (byte)	
	acknowledge	0x06: ACK byte if successful Anything else implies mismatch between command and response.
Description	This command sets the EVE System Byte Register value in the lower byte.	
Example	<p>Byte Stream: cmd(MSB), cmd(LSB), byteRegister(MSB), byteRegister(LSB), value(MSB), value(LSB)</p> <p>0xFF, 0xF4, 0x00, 0xA1, 0x00, 0x02</p> <p>This command will set the LSB of the ‘value’ (0x00 0x02) in the Byte register address 161 (0x00 0xA1) that represents Current Screen Mode. The Screen Mode would change to Portrait mode.</p> <p>The response will be 0x06 assuming the command was successful</p>	
Library Function	pokeB	

5.4.3 Word Peek

Serial Command	cmd (word), wordRegister (word)	
	cmd	0xFF5
	wordRegister	Word register address. EVE System Registers Memory Map for Word registers is listed at the end of this document.
Response	acknowledge (byte), value (word)	
	acknowledge	0x06: ACK byte if successful Anything else implies mismatch between command and response.
	value	Register value.
Description	This command returns the EVE System Word Register value.	
Example	<p>Byte Stream: cmd(MSB), cmd(LSB), wordRegister(MSB), wordRegister(LSB)</p> <p>0xFF, 0xF5, 0x00, 0x68</p> <p>This will read and return the word value from the word register address 104 (0x00 0x68) that represents Current X Origin.</p> <p>The response will be 0x06, 0x00, 0x00 assuming the current X Origin is set to 0.</p>	
Library Function	peekW	

5.4.4 Word Poke

Serial Command	cmd (word), wordRegister (word), value (word)	
	cmd	0xFFFF3
	wordRegister	Word register address. EVE System Registers Memory Map for Word registers is listed at the end of this document.
	value	Register value.
Response	acknowledge (byte)	
	acknowledge	0x06: ACK byte if successful Anything else implies mismatch between command and response.
Description	This command sets the EVE System Word Register value.	
Example	<p>Byte Stream: cmd(MSB), cmd(LSB), WordRegister(MSB), WordRegister(LSB), value(MSB), value(LSB)</p> <p>0xFF, 0xF3, 0x00, 0x68, 0x00, 0x0A</p> <p>This command will set the ‘value’ (0x00 0x0A) in the Word register address 104 (0x00 0x68) that represents Current X Origin. The Current X origin would change to 10 (0x00 0x0A).</p> <p>The response will be 0x06 assuming the command was successful</p>	
Library Function	pokeW	

5.5. GPIO Commands

The following is a summary of the commands available to be used for GPIO:

- Joystick

5.5.1 Joystick

Serial Command	cmd (word)	
	cmd	0xFFD9
Response	acknowledge (byte), value (word)	
	acknowledge	0x06: ACK byte if successful Anything else implies mismatch between command and response.
	value	Returns the value of the Joystick position from 0 - 5(5 position switch implementation).
Description	<p>This command will return the value of the joystick position.</p> <p>0: RELEASED 1: UP 2: LEFT 3: DOWN 4: RIGHT 5: PRESS</p> <p>Note: The joystick input uses IO1 utilizing the A/D converter. Each switch is connected to junction of 2 resistors that form a unique voltage divider circuit. Refer to the Goldelex data sheet example schematics for the required resistor values.</p> <p>Note: The Joystick on 4Display-Shield-96, 4Display-Shield-128, 4Display-Shield-160 and 4Display-Shield-144 is not connected with the GPIOs of the Display Module on board. It is rather designed to connect with the Arduino Board directly. Please check the datasheets for further details on the above Shields.</p>	
	<p>Example</p> <p>Byte Stream: cmd(MSB), cmd(LSB) 0xFF, 0xD9</p> <p>If the IO1 is connected to the Joystick as shown in the above figure, the response will be 0x06 0x00 0x04 assuming the 'RIGHT' being activated through the joystick/switch.</p>	
Library Function	joystick	

5.6. Sound and Tune Commands

The following is a summary of the commands available to be used for Sound and Tune:

- Beep

5.6.1 Beep

Serial Command	cmd (word), note (word), duration (word)	
	cmd	0xFFDA
	note	A value specifying the frequency of the note. Note could be between 0-64.
	duration	Specifies the time in milliseconds that the note will be played for.
Response	acknowledge (byte)	
	acknowledge	0x06: ACK byte if successful Anything else implies mismatch between command and response.
Description	This command will produce a single musical note for the required duration through IO2.	
Example	Byte Stream: cmd(MSB), cmd(LSB), note(MSB), note(LSB), duration(MSB), duration(LSB)	
	0xFF, 0xDA, 0x00, 0x2D, 0x03, 0xE8	
	This will play note 45 for 1 second.	
	The response will be 0x06 assuming the command was successful	
Library Function	BeeP	

5.7. Serial (UART) Communications Commands

The following is a summary of the commands available to be used for Serial (UART) Communications:

- Set Baud Rate

5.7.1 Set Baud Rate

Serial Command	cmd (word), index (word)				
	cmd	0x000B			
	index	Specifies the baud rate index value.			
		index	Required Baud Rate	% Error	Actual Baud Rate
		27271	110	0.00%	110
		9999	300	0.00%	300
		4999	600	0.00%	600
		2499	1200	0.00%	1200
		1249	2400	0.00%	2400
		624	4800	0.00%	4800
		312	9600	-0.16%	9585
		207	14400	0.16%	14423
		155	19200	0.16%	19231
		95	31250	0.00%	31250
		77	38400	0.16%	38462
		53	56000	-0.79%	55556
		51	57600	0.16%	57692
		25	115200	0.16%	115385
		22	128000	1.90%	130435
		11	256000	-2.34%	250000
		10	300000	-9.09%	272727
		8	375000	-11.11%	333333
		6	500000	-14.29%	428571
		4	600000	0.00%	600000
Response	acknowledge (byte)				
	acknowledge	0x06: ACK byte if successful Anything else implies mismatch between command and response.			
Description	The Set Baud Rate command is used to set the required baud rate. To set the default baud rate, please refer to the instructions in Chapter 2.				
Example	Byte Stream: cmd(MSB), cmd(LSB), index(MSB), index(LSB)				
	0x00, 0x0B, 0x00, 0x0A				
	This will set the baud rate to be 300000, which is Index 10 (0x00, 0x0A)				
	The response will be 0x06 at the new baud rate set, 100ms after the command is sent				
Library Function	setbaudWait				

5.8. Image Control Commands

The following is a summary of the commands available to be used for Image Control:

- Blit Com to Display

5.8.1 Blit Com to Display

Serial Command	cmd (word), x (word), y (word), width (word), height (word), data (data)	
	cmd	0x000A
	x, y	Specifies the horizontal and vertical position of the top-left corner of the image to be displayed
	width	width of the image to be displayed
	height	height of the image to be displayed
	data	pixel1...pixelN 16 bit pixel data to be plotted on the Display screen. 16 bit = 5bit Red, 6bit Green, 5bit Blue
Response	acknowledge (byte)	
	acknowledge	0x06: ACK byte if successful Anything else implies mismatch between command and response.
Description	This command will BLIT (Block Image Transfer) 16 bit pixel data from the Com port on to the screen.	
Example	Byte Stream: cmd(MSB), cmd(LSB), x(MSB), x(LSB), y(MSB), y(LSB), width(MSB), width(LSB), height(MSB), height(LSB), pixel1, pixel2, ..., pixelN 0x00, 0x0A, 0x00, 0x00, 0x00, 0x00, 0x00, 0x80, 0x00, 0x80, 0x31, 0x81, 0x63... etc This will displaying an image at X=0 (0x00, 0x00), Y=0 (0x00, 0x00) with Width = 128 (0x00, 0x80) and height = 128 (0x00, 0x80) The response will be 0x06 assuming the command was successful	
Library Function	blitComtoDisplay	

5.9. System Commands

The following is a summary of the commands available to be used for System:

- Get Display Model
- Get SPE Version
- Get PmmC Version
- Screen Saver Timeout
- Screen Saver Speed
- Screen Saver Mode

5.9.1 Get Display Model

Serial Command	cmd (word)	
	cmd	0x0007
Response	acknowledge (byte), model (string)	
	acknowledge	0x06: ACK byte if successful Anything else implies mismatch between command and response.
	count	Number of characters in the model name to return
	model	Display Module's model name. Without NULL terminator.
Description	Returns the Display Model in the form of a string without Null terminator.	
Example	<p>Byte Stream: cmd(MSB), cmd(LSB)</p> <p>0x00, 0x07</p> <p>This will request the display to return its model name as a string of characters without the NULL.</p> <p>The response will be 0x06, 0x00, 0x0C, 0x75 0x4F 0x4C 0x45 0x44 0x2D 0x31 0x36 0x30 0x2D 0x47 0x32 assuming the command was successful and the display returned 12 characters (0x00, 0x0C) and the display model was "uOLED-160-G2" (0x75 0x4F 0x4C 0x45 0x44 0x2D 0x31 0x36 0x30 0x2D 0x47 0x32)</p>	
Library Function	sys_GetModel	

5.9.2 Get SPE Version

Serial Command	cmd (word)	
	cmd	0x0008
Response	acknowledge (byte), version (word)	
	acknowledge	0x06: ACK byte if successful Anything else implies mismatch between command and response.
	version	SPE Version installed on the module.
Description	Returns the SPE Version installed on the module.	
Example	<p>Byte Stream: cmd(MSB), cmd(LSB)</p> <p>0x00, 0x08</p> <p>This will return the version of the SPE Application loaded into the display</p> <p>The response will be 0x06, 0x01, 0x00 assuming the command was successful and the version of the SPE Application was 256 (0x01, 0x00)</p>	
Library Function	sys_GetVersion	

5.9.3 Get PmmC Version

Serial Command	cmd (word)	
	cmd	0x0009
Response	acknowledge (byte), version (word)	
	acknowledge	0x06: ACK byte if successful Anything else implies mismatch between command and response.
	version	PmmC Version installed on the module.
Description	Returns the PmmC Version installed on the module.	
Example	<p>Byte Stream: cmd(MSB), cmd(LSB)</p> <p>0x00, 0x09</p> <p>This will return the version of the PmmC loaded into the display</p> <p>The response will be 0x06, 0x02, 0x03 assuming the command was successful and the PmmC loaded was version 515 (0x02, 0x03) which represents Rev23</p>	
Library Function	sys_GetPmmC	

5.9.4 Screen Saver Timeout

Serial Command	cmd (word), timeout(word)	
	cmd	0x000C
	timeout	Specifies the screen saver timeout in milliseconds. Timeout value could be 1-65535. 0 disables the screen saver.
Response	acknowledge (byte)	
	acknowledge	0x06: ACK byte if successful Anything else implies mismatch between command and response.
Description	<p>This command will set the screen saver Timeout. 0 is set to disable the screen saver.</p> <p>Default screen saver timeout settings could be adjusted as shown in Section 2.2.</p> <p>Note: This feature is display dependent. Not all the display screens offer Screen Saver feature. Such as, uLCD-144-G2 does not support Screen Saver.</p>	
Example	<p>Byte Stream: cmd(MSB), cmd(LSB), timeout(MSB), timeout(LSB)</p> <p>0x00, 0x0C, 0x03, 0xE8</p> <p>This will set the screen saver timeout to 1 second. Where (0x03 0xE8) is 1000msec.</p> <p>The response will be 0x06 assuming the command was successful</p>	
Library Function	SSTimeout	

5.9.5 Screen Saver Speed

Serial Command	cmd (word), speed(word)	
	cmd	0x000D
	speed	Specifies the screen saver speed. Speed values are different for different Display Modules. uLCD-144-G2 : N/A uOLED-96-G2 : 0-3 (Fastest-Slowest) uOLED-128-G2 : 0-3 (Fastest-Slowest) uOLED-160-G2 : 0-255 (Fastest-Slowest) uTOLED-20-G2 : 1-16 (Fastest-Slowest)
Response	acknowledge (byte)	
	acknowledge	0x06: ACK byte if successful Anything else implies mismatch between command and response.
Description	<p>This command will set the screen saver Speed.</p> <p>Default screen saver speed settings could be adjusted as shown in Section 2.2.</p> <p>Note: This feature is display dependent. Not all the display screens offer Screen Saver feature.</p>	
Example	<p>Byte Stream: cmd(MSB), cmd(LSB), speed(MSB), speed(LSB)</p> <p>0x00, 0x0D, 0x00, 0x00</p> <p>This will set the screen saver speed to maximum.</p> <p>The response will be 0x06 assuming the command was successful</p>	
Library Function	SSSpeed	

5.9.6 Screen Saver Mode

Serial Command	cmd (word), mode(word)	
	cmd	0x000E
	mode	<p>Specifies the screen saver scroll direction. ‘mode’ values are different for different display modules. uLCD-144-G2: N/A – Scrolling is not supported uOLED-96-G2: N/A – Always scrolls up, cannot be changed uOLED-128-G2: 0-Up, 1-Down, 2-Left, 3-Right uOLED-160-G2: 0-Left, 1-Right uTOLED-20-G2: 0-Left, 1-Right, 3-Down, 7-Up 4-Left/Down, 5-Down/Right, 8-Top/Left, 9-Top/Right</p>
Response	acknowledge (byte)	
	acknowledge	0x06: ACK byte if successful Anything else implies mismatch between command and response.
Description	<p>This command will set the screen saver scroll direction. There could be no screen saver supported in which case the screen wouldn’t have any effect from this command. Or, there could be 2 directional or 4 directional scroll features available on a particular display screen.</p> <p>Note: This feature is display dependent. Not all the display screens offer Screen Saver feature.</p> <p>Default screen saver speed settings could be adjusted as shown in Section 2.2.</p>	
Example 1	<p>Byte Stream: cmd(MSB), cmd(LSB), mode(MSB), mode(LSB)</p> <p>0x00, 0x0E, 0x00, 0x00</p> <p>This will set the screen saver scroll direction to ‘UP’ on a uOLED-128-G2 module.</p> <p>The response will be 0x06 assuming the command was successful</p>	
Example 2	<p>Byte Stream: cmd(MSB), cmd(LSB), mode(MSB), mode(LSB)</p> <p>0x00, 0x0E, 0x00, 0x00</p> <p>This will set the screen saver scroll direction to ‘RIGHT’ on a uOLED-160-G2 module.</p> <p>The response will be 0x06 assuming the command was successful</p>	
Library Function	SSMode	

6. Goldelox EVE System Registers Memory Map

The following tables outline in detail the Goldelox system registers and flags.

Table 6.1: BYTE-Size Registers Memory Map

Table 6.1: BYTE-Size Registers Memory Map					
LABEL	ADDRESS		USAGE	SIZE	*NOTES
	DEC	HEX			
VX1	128	0x80	display hardware GRAM x1 pos	BYTE	SYSTEM (R/O)
VY1	129	0x81	display hardware GRAM y1 pos	BYTE	SYSTEM (R/O)
VX2	130	0x82	display hardware GRAM x2 pos	BYTE	SYSTEM (R/O)
VY2	131	0x83	display hardware GRAM y2 pos	BYTE	SYSTEM (R/O)
SYS_X_MAX	132	0x84	display hardware X res-1	BYTE	SYSTEM (R/O)
SYS_Y_MAX	133	0x85	display hardware Y res-1	BYTE	SYSTEM (R/O)
WRITE_GRAM_REG	134	0x86	display GRAM write address	BYTE	SYSTEM (R/O)
READ_GRAM_REG	135	0x87	display GRAM read address	BYTE	SYSTEM (R/O)
IMAGE_WIDTH	136	0x88	loaded image/animation width	BYTE	SYSTEM (R/O)
IMAGE_HEIGHT	137	0x89	loaded image/animation height	BYTE	SYSTEM (R/O)
IMAGE_DELAY	138	0x8A	frame delay (if animation)	BYTE	USER
IMAGE_MODE	139	0x8B	image/animation colour mode	BYTE	SYSTEM (R/O)
CLIP_LEFT_POS	140	0x8C	left clipping point setting	BYTE	USER
CLIP_TOP_POS	141	0x8D	top clipping point setting	BYTE	USER
CLIP_RIGHT_POS	142	0x8E	right clipping point setting	BYTE	USER
CLIP_BOTTOM_POS	143	0x8F	bottom clipping point setting	BYTE	USER
CLIP_LEFT	144	0x90	left clipping point active	BYTE	USER
CLIP_TOP	145	0x91	top clipping point active	BYTE	USER
CLIP_RIGHT	146	0x92	right clipping point active	BYTE	USER
CLIP_BOTTOM	147	0x93	bottom clipping point active	BYTE	USER
FONT_TYPE	148	0x94	0 = fixed, 1 = proportional	BYTE	SYSTEM (R/O)
FONT_MAX	149	0x95	number of chars in font set	BYTE	SYSTEM (R/O)
FONT_OFFSET	150	0x96	ASCII offset (usually 0x20)	BYTE	SYSTEM (R/O)
FONT_WIDTH	151	0x97	width of font (pixel units)	BYTE	SYSTEM (R/O)
FONT_HEIGHT	152	0x98	height of font (pixel units)	BYTE	SYSTEM (R/O)
TEXT_XMAG	153	0x99	text width magnification	BYTE	USER
TEXT_YMAG	154	0x9A	text height magnification	BYTE	USER
TEXT_MARGIN	155	0x9B	text place holder for CR	BYTE	SYSTEM (R/O)
TEXT_DELAY	156	0x9C	text delay effect (0-255msec)	BYTE	USER
TEXT_X_GAP	157	0x9D	X pixel gap between chars	BYTE	USER
TEXT_Y_GAP	158	0x9E	Y pixel gap between chars	BYTE	USER
GFX_XMAX	159	0x9F	width of current orientation	BYTE	SYSTEM (R/O)
GFX_YMAX	160	0xA0	height of current orientation	BYTE	SYSTEM (R/O)
GFX_SCREENMODE	161	0xA1	Current screen mode (0-3)	BYTE	SYSTEM (R/O)
reserved	162-165	0xA2-0xA5	reserved	BYTE	SYSTEM (R/O)
* NOTES:					
SYSTEM	SYSTEM registers are maintained by internal system functions and should not be written to. They should only ever be read. DO NOT WRITE to these registers.				
USER	USER registers are read/write (R/W) registers used to alter the system behaviour. Refer to the individual functions for information on the interaction with these registers.				
These registers are accessible with peekB and pokeB functions.					

Table 6.2: WORD-Size Registers Memory Map					
LABEL	ADDRESS		USAGE	SIZE	*NOTES
	DEC	HEX			
SYS_OVERFLOW	83	0x53	16bit overflow register	WORD	USER
SYS_COLOUR	84	0x54	internal variable for colour	WORD	SYSTEM
SYS_RETVAL	85	0x55	return value of last function	WORD	SYSTEM
GFX_BACK_COLOUR	86	0x56	screen background colour	WORD	USER
GFX_OBJECT_COLOUR	87	0x57	graphics object colour	WORD	USER
GFX_TEXT_COLOUR	88	0x58	text foreground colour	WORD	USER
GFX_TEXT_BGCOLOUR	89	0x59	text background colour	WORD	USER
GFX_OUTLINE_COLOUR	90	0x5A	circle/rectangle outline	WORD	USER
GFX_LINE_PATTERN	91	0x5B	line draw tessellation	WORD	USER
IMG_PIXEL_COUNT	92	0x5C	count of pixels in image	WORD	SYSTEM
IMG_FRAME_COUNT	93	0x5D	count of frames in animation	WORD	SYSTEM
MEDIA_HEAD	94	0x5E	media sector head position	WORD	SYSTEM
SYS_OUTSTREAM	95	0x5F	Output stream handle	WORD	SYSTEM
GFX_LEFT	96	0x60	image left real point	WORD	SYSTEM
GFX_TOP	97	0x61	image top real point	WORD	SYSTEM
GFX_RIGHT	98	0x62	image right real point	WORD	SYSTEM
GFX_BOTTOM	99	0x63	image bottom real point	WORD	SYSTEM
GFX_X1	100	0x64	image left clipped point	WORD	SYSTEM
GFX_Y1	101	0x65	image top clipped point	WORD	SYSTEM
GFX_X2	102	0x66	image right clipped point	WORD	SYSTEM
GFX_Y2	103	0x67	image bottom clipped point	WORD	SYSTEM
GFX_X_ORG	104	0x68	current X origin	WORD	USER
GFX_Y_ORG	105	0x69	current Y origin	WORD	USER
RANDOM_LO	106	0x6A	random generator LO word	WORD	SYSTEM
RANDOM_HI	107	0x6B	random generator HI word	WORD	SYSTEM
MEDIA_ADDR_LO	108	0x6C	media byte address LO	WORD	SYSTEM
MEDIA_ADDR_HI	109	0x6D	media byte address HI	WORD	SYSTEM
SECTOR_ADDR_LO	110	0x6E	media sector address LO	WORD	SYSTEM
SECTOR_ADDR_HI	111	0x6F	media sector address HI	WORD	SYSTEM
SYSTEM_TIMER_LO	112	0x70	1msec system timer LO word	WORD	USER
SYSTEM_TIMER_HI	113	0x71	1msec system timer HI word	WORD	USER
TIMER0	114	0x72	1msec user timer 0	WORD	USER
TIMER1	115	0x73	1msec user timer 1	WORD	USER
TIMER2	116	0x74	1msec user timer 2	WORD	USER
TIMER3	117	0x75	1msec user timer 3	WORD	USER
INCVAL	118	0x76	predec/preinc/postdec/postinc addend	WORD	USER
TEMP_MEDIA_ADDRLO	119	0x77	temporary media address LO	WORD	SYSTEM
TEMP_MEDIA_ADDRHI	120	0x78	temporary media address HI	WORD	SYSTEM
GFX_TRANSPARENTCOLOUR	121	0x79	Image transparency colour	WORD	USER
GFX_STRINGMETRIX	122	0x7A	Low byte = string width High byte = string height	WORD	SYSTEM
GFX_TEMPSTORE1	123	0x7B	Low byte = last character printed High byte = video frame timer over-ride	WORD	SYSTEM
reserved	124	0x7C	reserved	WORD	SYSTEM
reserved	125	0x7D	reserved	WORD	SYSTEM
SYS_FLAGS1	126	0x7E	system control flags word 0	WORD	FLAGS
SYS_FLAGS2	127	0x7F	system control flags word 1	WORD	FLAGS
USR_SP	128	0x80	User defined stack pointer	WORD	USERSTACK
USR_MEM	129	0x81	255 user variables / array(s)	WORD	MEMORY

SYS_STACK	384	0x180	128 level EVE machine stack	WORD	SYSTEMSTACK
* NOTES:					
SYSTEM	SYSTEM registers are maintained by internal system functions and should not be written to. They should only ever be read. DO NOT WRITE to these registers.				
USER	USER registers are read/write (R/W) registers used to alter the system behaviour. Refer to the individual functions for information on the interaction with these registers.				
USERSTACK	Used by the debugging and system extension utilities				
MEMORY	255 word size variables for users program				
STACK	128 word EVE system stack (STACK grows upwards)				
FLAGS	FLAGS are a mixture of bits that are maintained by either internal system functions or set / cleared by various system functions. Refer to the FLAGS Register Bit Map table, and individual functions for further details.				
These registers are accessible with peekW and pokeW functions.					

Table 6.3: FLAG Registers Bit Map

REGISTER	ADDRESS		NAME	USAGE	*NOTES	VALUE
	DEC	HEX				
SYS_FLAGS1	126	0x7E	* denotes auto reset			
	Bit 0		_STREAMLOCK	Used internally	SYSTEM	0x0001
	Bit 1		_PENSIZE	Object, 0 = solid, 1 = outline	SYSTEM	0x0002
	Bit 2		_OPACITY	Text, 0 = transparent, 1 = opaque	SYSTEM	0x0004
	Bit 3		_OUTLINED	box/circle outline 0 = off, 1 = on	SYSTEM	0x0008
	Bit 4		_BOLD	* text, 0 = normal, 1 = bold	SYSTEM	0x0010
	Bit 5		_ITALIC	* Text, 0 = normal, 1 = italic	SYSTEM	0x0020
	Bit 6		_INVERSE	* Text, 0 = normal, 1 = inverse	SYSTEM	0x0040
	Bit 7		_UNDERLINED	* Text, 0 = normal, 1 = underlined	SYSTEM	0x0080
	Bit 8		_CLIPPING	0 = clipping off, 1 = clipping on	SYSTEM	0x0100
	Bit 9		_STRMODE	Used internally	SYSTEM	0x0200
	Bit 10		_SERMODE	Used internally	SYSTEM	0x0400
	Bit 11		_TXTMODE	Used internally	SYSTEM	0x0800
	Bit 12		_MEDIAMODE	Used internally	SYSTEM	0x1000
	Bit 13		_PATTERNED	Used internally	SYSTEM	0x2000
	Bit 14		_COLOUR8	Display mode, 0 = 16bit, 1 = 8bit	SYSTEM	0x4000
	Bit 15		_MEDIAFONT	0 = internal font, 1 = media font	SYSTEM	0x8000
SYS_FLAGS2	127	0x7F				
	Bit 0		_MEDIA_INSTALLED	SD/SDHC or FLASH is detected/active	SYSTEM	0x0001
	Bit 1		_MEDIA_TYPE	0 = SD/SDHC, 1 = FLASH chip	SYSTEM	0x0002
	Bit 2		_MEDIA_READ	1 = MEDIA read in progress	SYSTEM	0x0004
	Bit 3		_MEDIA_WRITE	1 = MEDIA write in progress	SYSTEM	0x0008

Bit 4	_OW_PIN	0 = IO1, 1 = IO2 (Dallas OW Pin)	SYSTEM	0x0010
Bit 5	_PTR_TYPE	Used internally	SYSTEM	0x0020
Bit 6	_TEMP1	Used internally	SYSTEM	0x0040
Bit 7	_TEMP2	Used internally	SYSTEM	0x0080
Bit 8	_RUNMODE	1 = running pcode from media	SYSTEM	0x0100
Bit 9	_SIGNED	0 = number printed '-' prepend	SYSTEM	0x0200
Bit 10	_RUNFLAG	1 = EVE processor is running	SYSTEM	0x0400
Bit 11	_SINGLESTEP	1 = set breakpoint for debugger	SYSTEM	0x0800
Bit 12	_COMMINT	1 = buffered coms active	SYSTEM	0x1000
Bit 13	_DUMMY16	1 = display needs 16bit dummy	SYSTEM	0x2000
Bit 14	_DISP16	1 = display is 16bit interface	SYSTEM	0x4000
Bit 15	_PROPFONT	1 = current font is proportional	SYSTEM	0x8000

7. Revision History

Revision	Revision Content	Revision Date
1.0	First Release	01/02/2013
1.1	Added character limit information to the Put String command	22/02/2013
1.2	Fixed Set Font command, which was incorrect	21/03/2013
1.3	Fixed Set Baud Rate index values, which were incorrect	22/03/2013
1.4	Fixed incorrect Return on Screen Mode command	07/11/2013
1.5	Updated image in section 2.2	07/05/2014
1.6	Updated the information for Startup/Reset and Splash Screen	15/09/2014
1.7	Fixed typo in putstr function name (was previously putStr incorrectly), incorrect use of gfx_Set instead of txt_Set on page 30, and incorrect use of SStimeout instead of SSSpeed on page 87	01/10/2014
2.0	Updated Formatting and Contents	26/04/2017
2.1	Updated Formatting, updated Screen Saver Mode	22/03/2019

8. Legal Notice

Proprietary Information

The information contained in this document is the property of 4D Labs Semiconductors and may be the subject of patents pending or granted, and must not be copied or disclosed without prior written permission.

4D Labs Semiconductors endeavours to ensure that the information in this document is correct and fairly stated but does not accept liability for any error or omission. The development of 4D Labs Semiconductors products and services is continuous and published information may not be up to date. It is important to check the current position with 4D Labs Semiconductors. 4D Labs Semiconductors reserves the right to modify, update or make changes to Specifications or written material without prior notice at any time.

All trademarks belong to their respective owners and are recognised and acknowledged.

Disclaimer of Warranties & Limitation of Liability

4D Labs Semiconductors makes no warranty, either expressed or implied with respect to any product, and specifically disclaims all other warranties, including, without limitation, warranties for merchantability, non-infringement and fitness for any particular purpose.

Information contained in this publication regarding device applications and the like is provided only for your convenience and may be superseded by updates. It is your responsibility to ensure that your application meets with your specifications.

Images and graphics used throughout this document are for illustrative purposes only. All images and graphics used are possible to be displayed on the 4D Labs Semiconductors range of products, however the quality may vary.

In no event shall 4D Labs Semiconductors be liable to the buyer or to any third party for any indirect, incidental, special, consequential, punitive or exemplary damages (including without limitation lost profits, lost savings, or loss of business opportunity) arising out of or relating to any product or service provided or to be provided by 4D Labs Semiconductors, or the use or inability to use the same, even if 4D Labs Semiconductors has been advised of the possibility of such damages.

4D Labs Semiconductors products are not fault tolerant nor designed, manufactured or intended for use or resale as on line control equipment in hazardous environments requiring fail – safe performance, such as in the operation of nuclear facilities, aircraft navigation or communication systems, air traffic control, direct life support machines or weapons systems in which the failure of the product could lead directly to death, personal injury or severe physical or environmental damage ('High Risk Activities'). 4D Labs Semiconductors and its suppliers specifically disclaim any expressed or implied warranty of fitness for High Risk Activities.

Use of 4D Labs Semiconductors' products and devices in 'High Risk Activities' and in any other application is entirely at the buyer's risk, and the buyer agrees to defend, indemnify and hold harmless 4D Labs Semiconductors from any and all damages, claims, suits, or expenses resulting from such use. No licenses are conveyed, implicitly or otherwise, under any 4D Labs Semiconductors intellectual property rights.

9. Contact Information

For Technical Support: www.4dlabs.com.au/support

For Sales Support: sales@4dlabs.com.au

Website: www.4dlabs.com.au

Copyright 4D Labs Semiconductors 2000-2019.